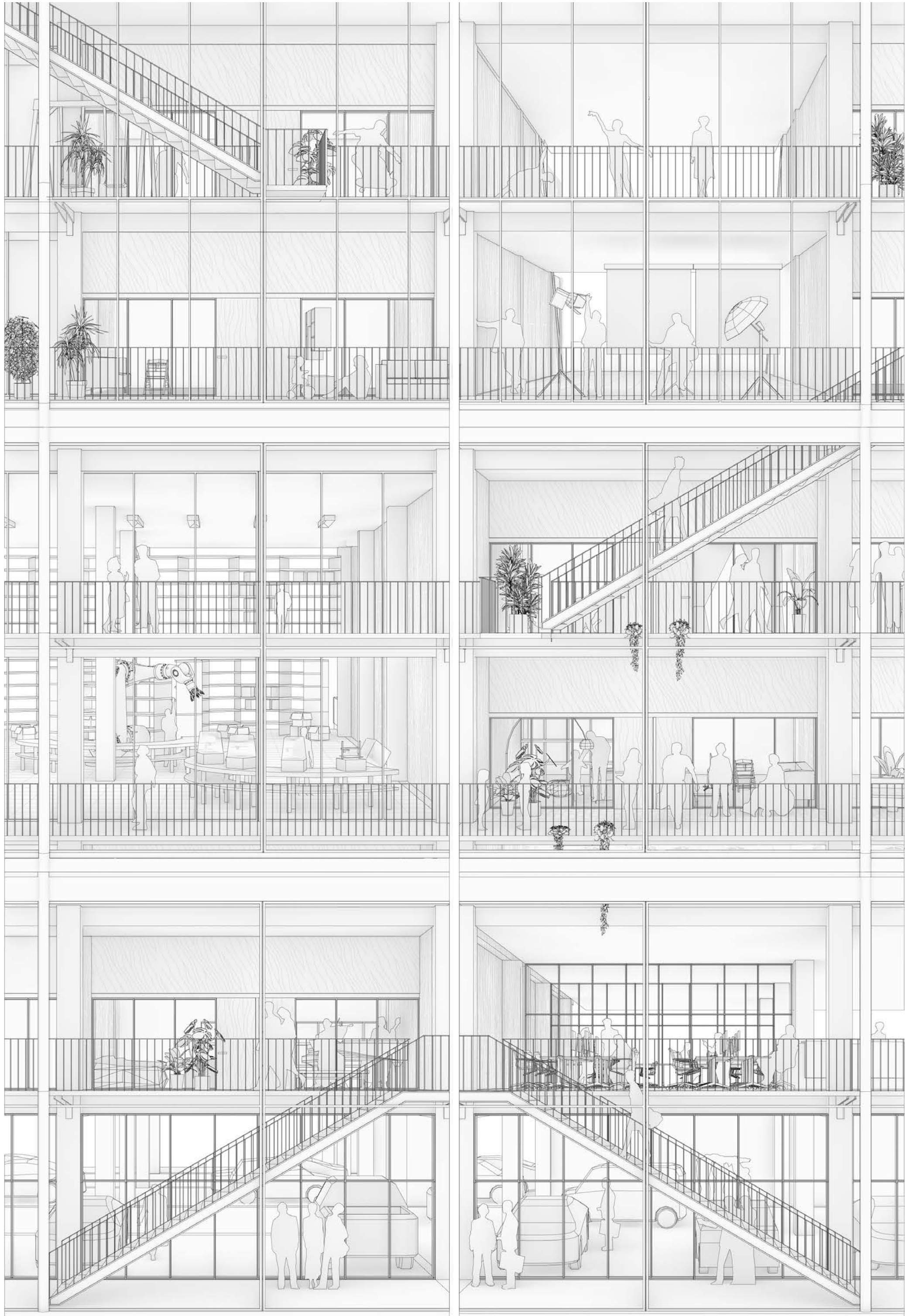
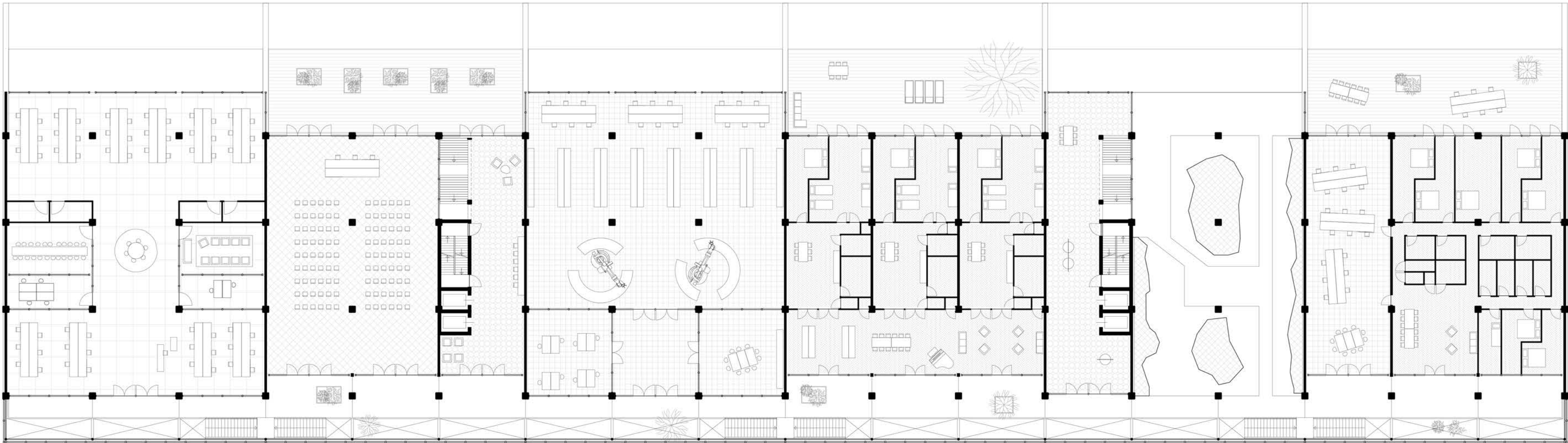


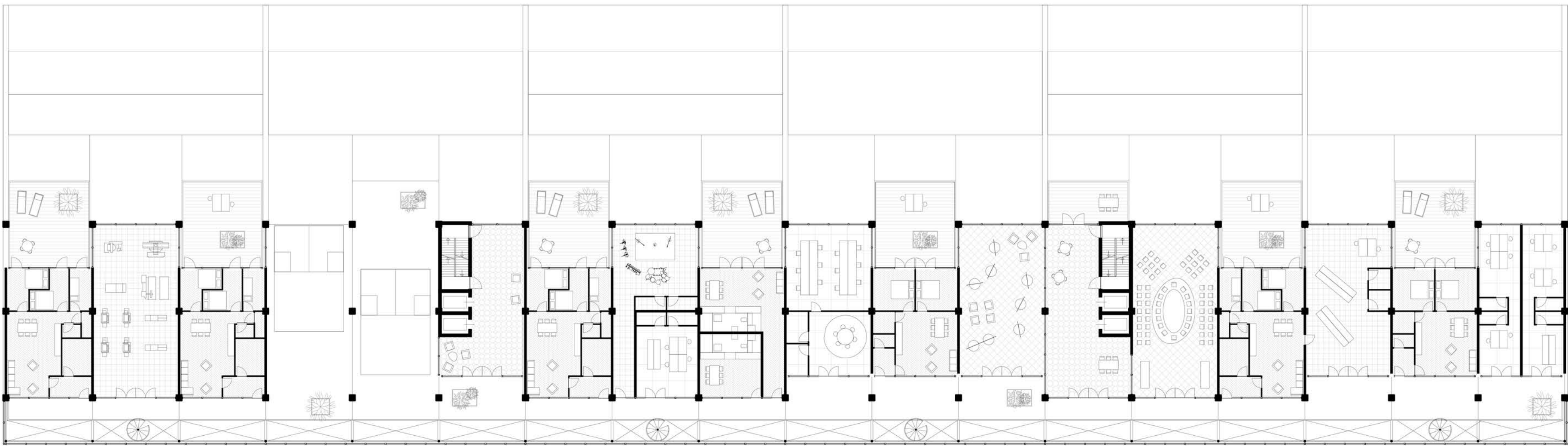
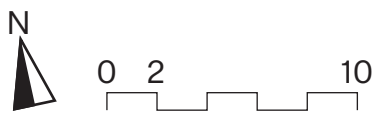
Section



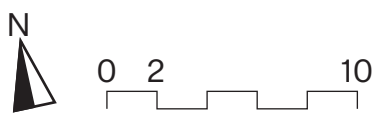
Facade fragment



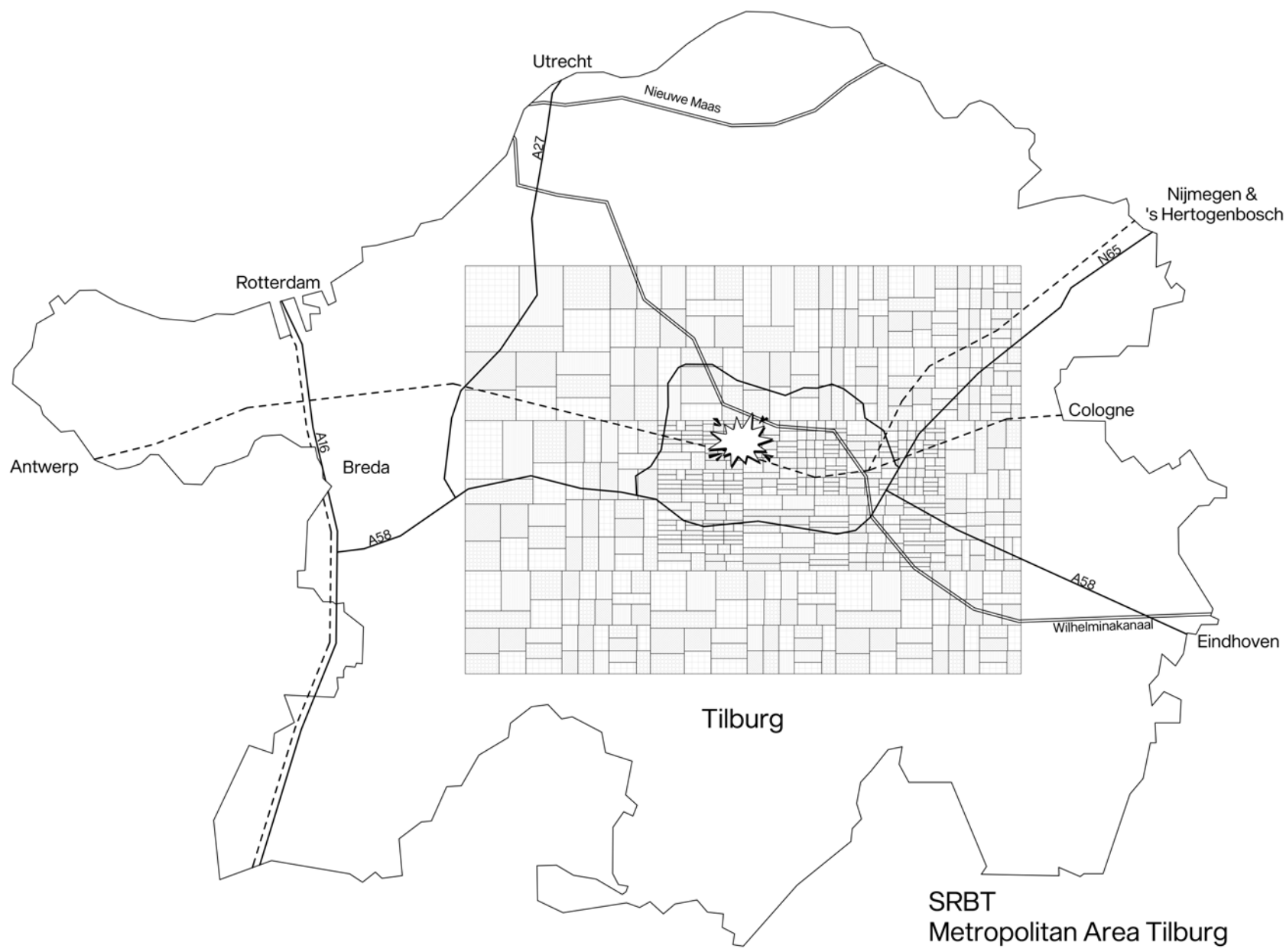
Typical floorplan +4



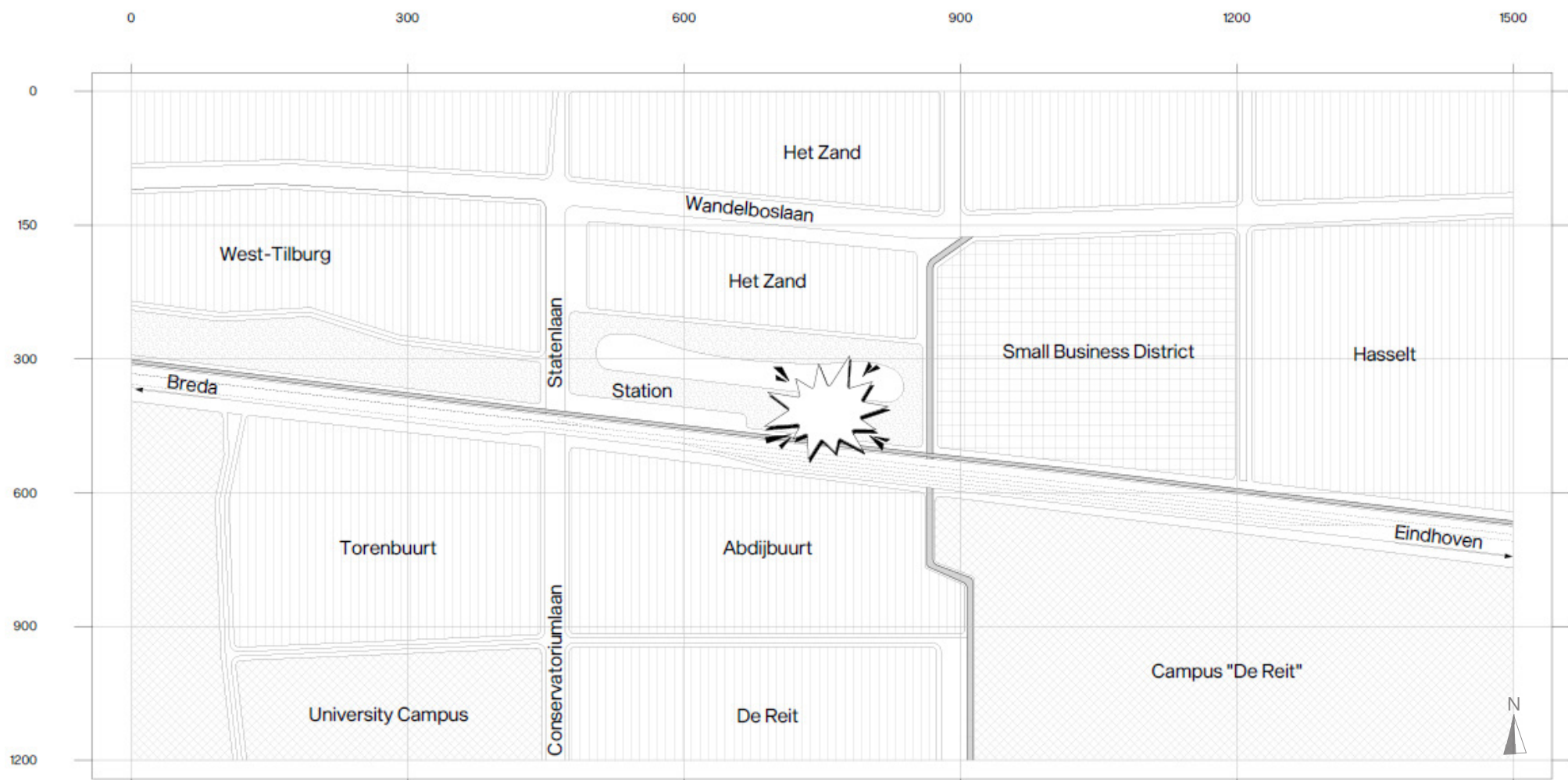
Typical floorplan +6



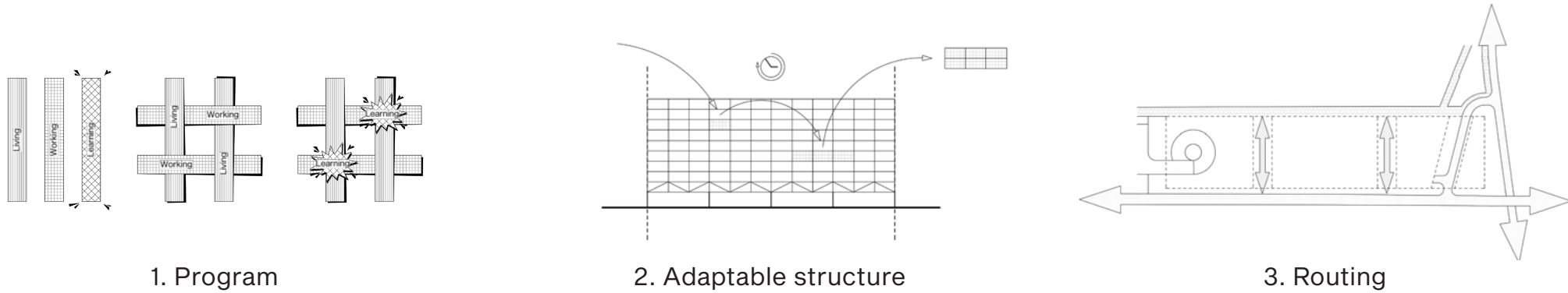




Territorial



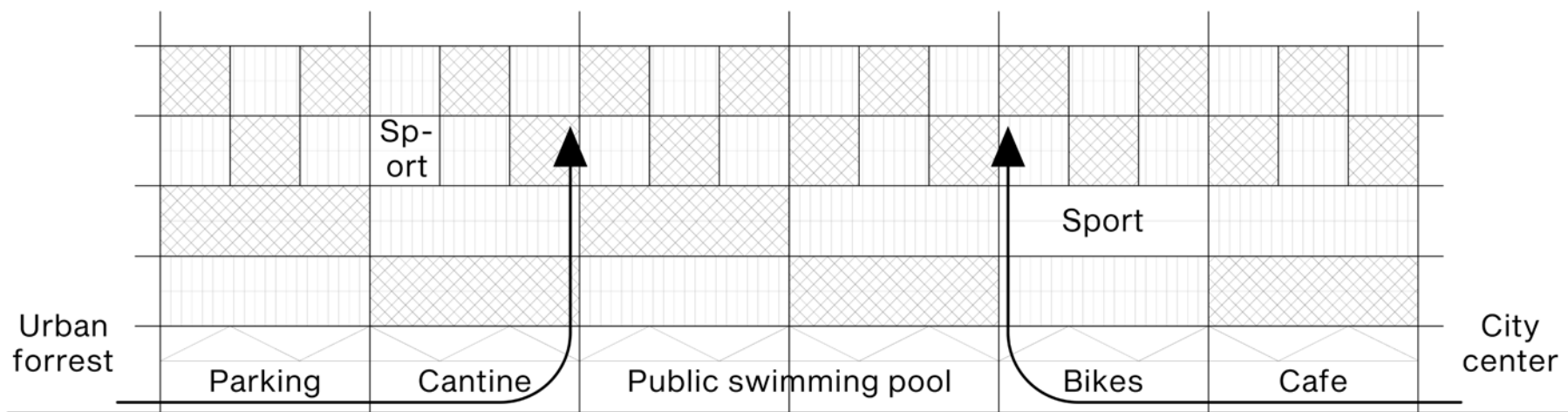
Reflection site



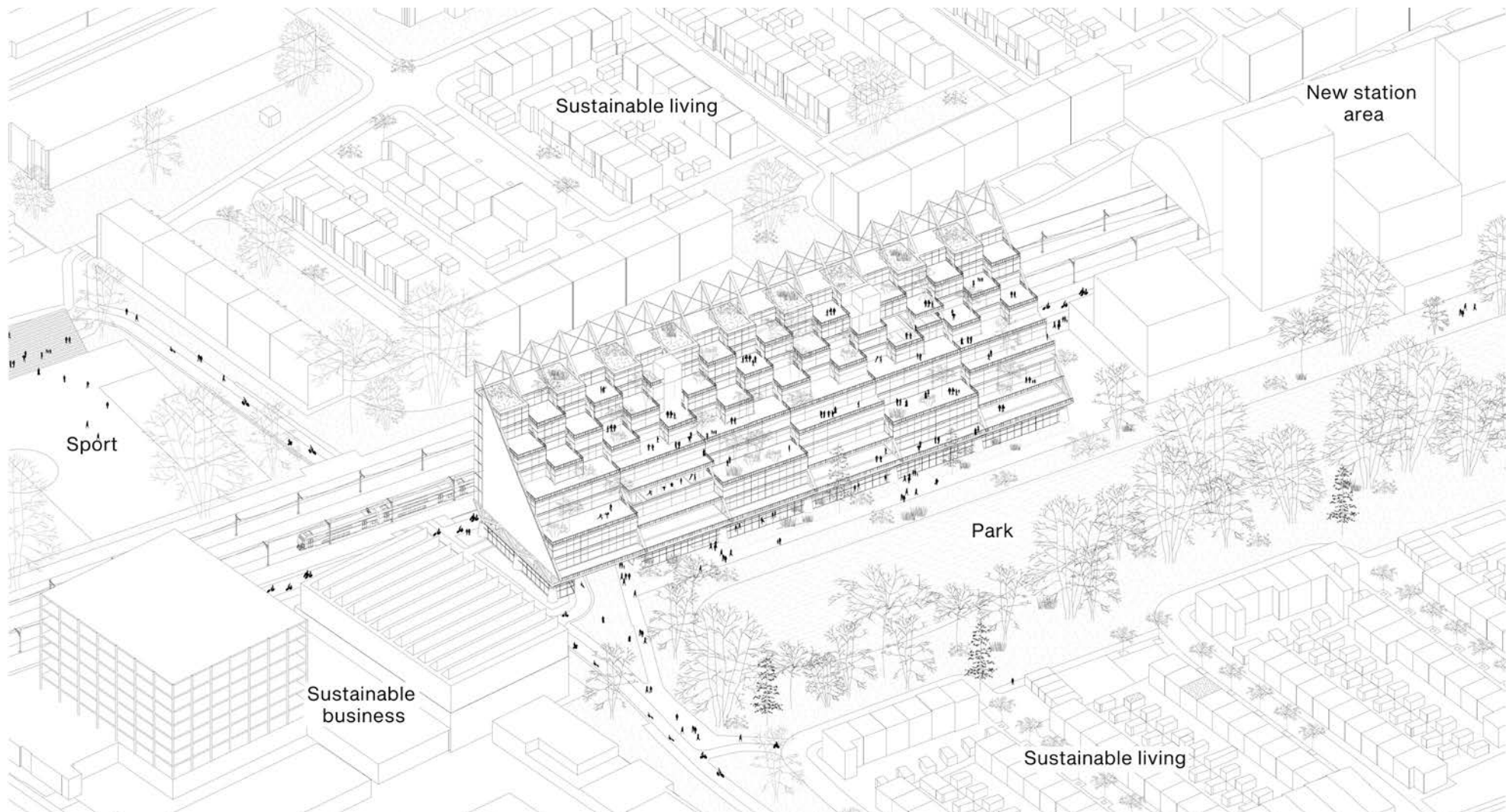
1. Program

2. Adaptable structure

3. Routing



Concept



Project site

Our aim for this multifunctional building is to transcend the cliché of creating separate boxes to live, work and learn. We propose to weave instead. Within a modular structure various actions take place in parallel. Tapering to the top, it creates spatial variety without impacting the park. Trusses elevate the structure to incorporate the flows of the surroundings on ground level. The heart of the building is a public swimming pool, inviting everyone

inside. The woven spaces above are sprinkled with open spaces to foster interaction and to learn about each other. The project is destined to be an enabler for the area in West Tilburg. Through its openness, program mix and interaction, the area will develop further. The basis for a mixed city is already there and we think the existing qualities in the neighborhood can be

strengthened to create sustainable activities for an economically strong city. For example, the structure might stimulate the potential of the adjacent small business district to become more dense and become an attractive space for innovative companies. The houses in the area can be upgraded to become more energy efficient and nature inclusive. We see sports as an essential program in the area to foster connection between different groups of people. We keep

the park as a vital element in the area and with the densification of the station area the neighborhood can become more attractive and contribute to the housing demand. Our proposed concept for this location connects with these ingredients and can thus give a new impulse to the neighborhood, city and region. "An Unexpected Neighbor" aims to present interaction as an essential part of life.