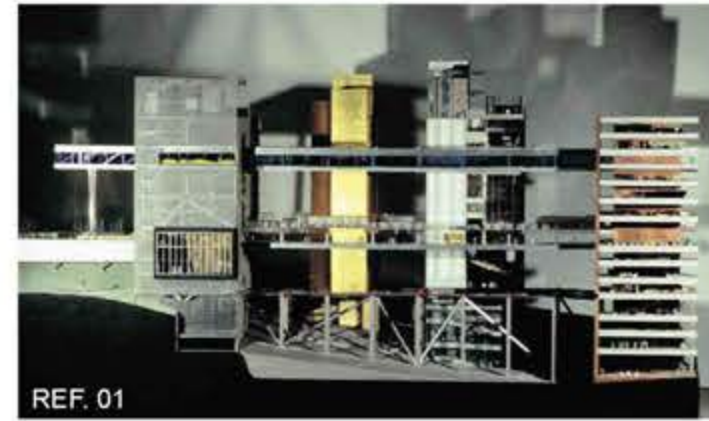
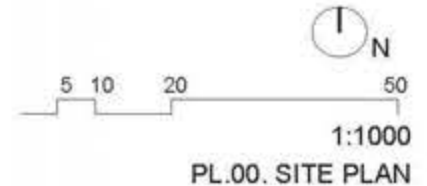


- A. Business incubator + Residences
- B. Auditorium + School expansion
- C. Mixed-use building
- D. Square
- E. Tram station

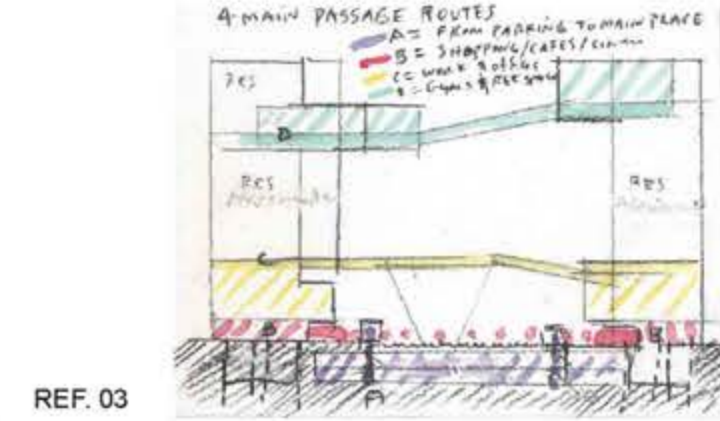
- Study area
- Project site
- Bicycle path



REF. 01



REF. 02



REF. 03

The concept of citizenship is broken because the citizens close themselves in particular territories where they separate in several social and economic classes. This project seeks to combat the monofunctional space in favor of returning the multifunctional space. With the creation of public areas of transformation, meeting development, feelings of tolerance, identity, social sharing and mutual respect.

The informal vitality of the public space is the mixture of workspaces, shops and homes that make neighborhoods more alive. This home-work-leisure connection frees us from automobile dependency and promotes a dense, interactive, community environment and creates social cohesion.

With the emergence of more small-scale, almost individual jobs, it forces us to rethink the functioning of the neighborhood, as well as the definition of the boundaries between work and daily life of people, more and more habitable spaces have emerged that are more flexible and free of definition space, promoting the creativity of its users through a dosage between order with openness to the unpredictable and the spontaneous like the architect Rem Koolhaas represents in his mixed-use project for Universal Headquarters Building (image 01).

With a strong promotion of daily life increasingly defined by its users and not by its forms, the buildings become thinking, that is, functionally organic and mobile, more permeable and where the street and the square become part of a building.

The volumes are structured by means of meshes that allow the displacement and vibration of the spaces creating possibilities for the emergence of vacuums that seek to enhance the collective life offering a certain programmatic and functional freedom with the creation of neutral space that allows the existence and places of transformation and extension of private life.

Over the territory emerges the reticular structure, clear and geometric, which marks the moment of implantation, then the volumes that shape the surrounding space appear. The neighborhood is born. It gains matter, memory, functions are established which soon become hybrid and neutral, gaining their own dynamics in communion with created voids. Consequently, the sense of neighborhood is complete with the program activities, these mixes and complement themselves by challenging the floods to which they were submitted and finally open to the city, influence it and improve it.

MIXED-USE BUILDING
The housing building adjusts itself to form a barrier with the Transformatorweg, which blocks the sound noises in the space of intervention, opening mainly to the south wing for private terraces.

This is composed of three blocks, the first part being a floor for commercial, which due to the scarcity of area has sent its technical zones to the underground parking floor; and the next three to workspaces divided in formal and informal areas.

The multipurpose building combines a mix of functions that develop sequentially by floor. On the ground floor, a large atrium welcomes the visitors, as a moment of pause that contrasts with the complexity of the work areas. This floor is marked by the existence of commercial areas such as shops, a restaurant, a café/bar, a gallery/showroom and two covered areas for bicycle parking.

Workspaces
Situated on the first floor the workspaces are "enclosed" by a large social balcony, around the perimeter of the building, that allows access to the workspaces, permanent coexistence between workers and a constant contact with the surroundings and the mediacollege.

The workspaces are spread over three floors and depart from two distinct concepts: informal and formal workspaces. The first focus on two large areas with different internal zones that complement each other in their diversity and intensify the interaction and creativity of the workers.

In the project for the Kanagawa Institute of Technology (image 02) the architect Junya Ishigami represented the idea of blurring spaces where the project had no visible identifiable boundaries.

Like the Kanagawa Institute this project seeks to represent an alternative to the common office space, by promoting the convergence of ideas in open areas marked by voids that join the different informal floors. The formal work areas serve mainly for workers and businesses that need privacy in their activity.

Housing
The remaining floors are intended for housing, which when raised from the ground, on this podium describe two volumetric masses with two different types of spatial organization. The east block is configured from a linear distribution of galleries, while the west block is organized around a central point that only promotes vertical circulation. Even so, the apartments have the possibility of having two fronts of façade, which facilitates their ventilation and natural light and consequently confer different spaces of use of the dwelling, in a constant search for the adaptation to different forms of inhabiting. From a generic base structure, a fragmented block has

developed that redefines new public spaces between the private areas, making the building a hybrid organism that is composed of moments of separation and distance, as well as the approximation and agglutination of the private areas.

Social and Leisure
The housing buildings are halted by the inclusion of a large area, displaced from the structural alignment, with spaces of leisure and social interaction. Thus, this floor has sports areas, several social areas and a bridge that joins the two housing blocks and serves as a belvedere with views to Amsterdam.

This intermediate volume that set it free from formal rigidity and reconfigures itself in space to connect the two housing blocks, creates outer and inner leisure zones, appealing to the community sense and fundamentally transport the public space from the horizontal plane to the vertical plane. This process of interaction between the various plans will culminate with green coverage and become a leisure zone, but also informal work for the advantage of being isolated from the energetic urban life.

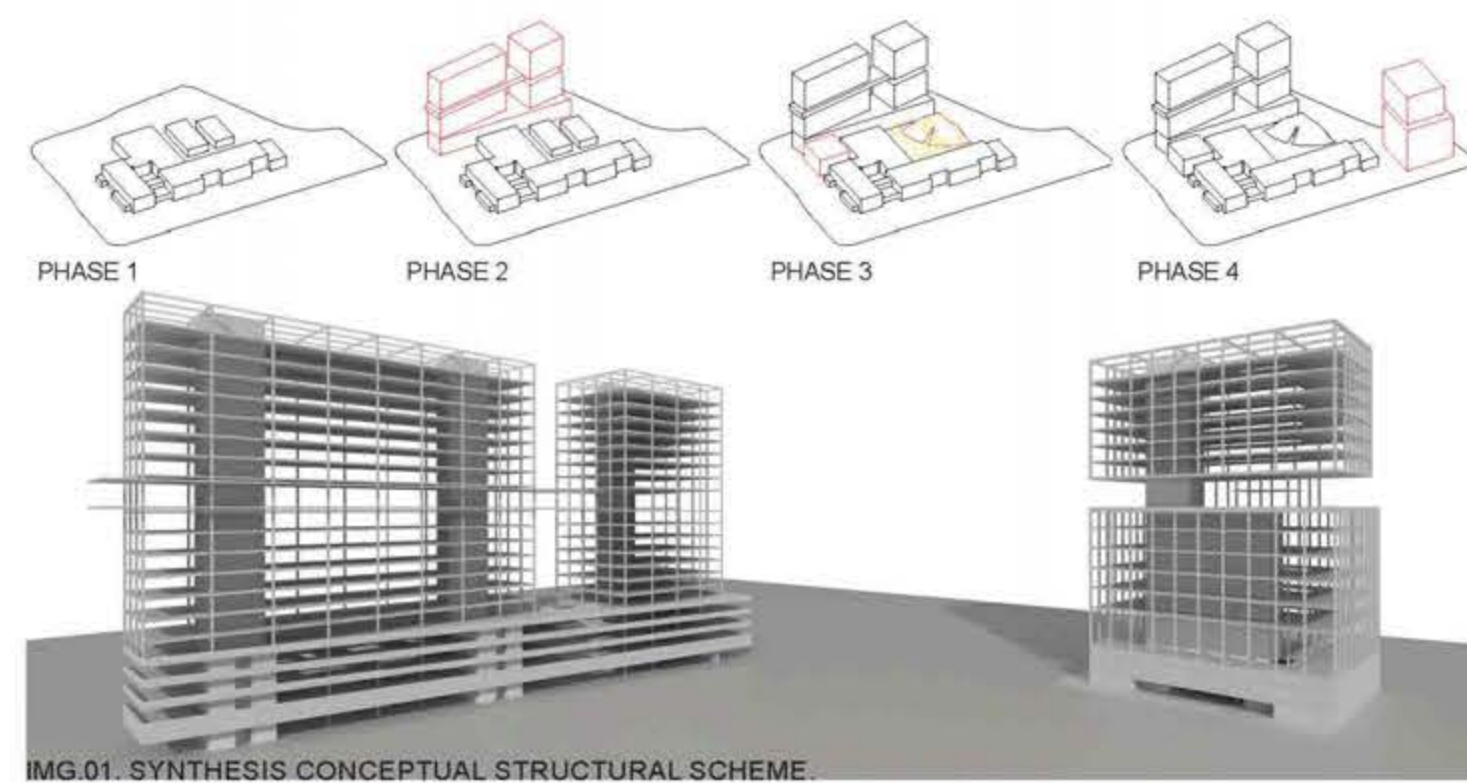
AUDITORIUM + SCHOOL EXPANSION
The readjustment of the school space is defined in three moments: the first with the demolition of two volumes to the north that set free the outer space for the creation of a central square common to the whole project and that becomes primary zone for the community life and that makes the connection between the different buildings to be implemented and declares the creation of this void as a fundamental part of the project. Consequently, the school was expanded to the source with a volume that ends the wing to the east and contains an auditorium, classrooms and curators' offices.

BUSINESS INCUBATOR + RESIDENCES
The third moment results in the construction of a volume independent of the existing structure of the school and that is allocated over the existing parking, which forced a repositioning of this to a lower level. The building contains a multipurpose room that can be a zone of various events or recording studios, the next floor provides a showroom that promotes the approach to the labor market, followed by a floor of training rooms and then three floors of coworking for promoting the integration of students into the labor market.

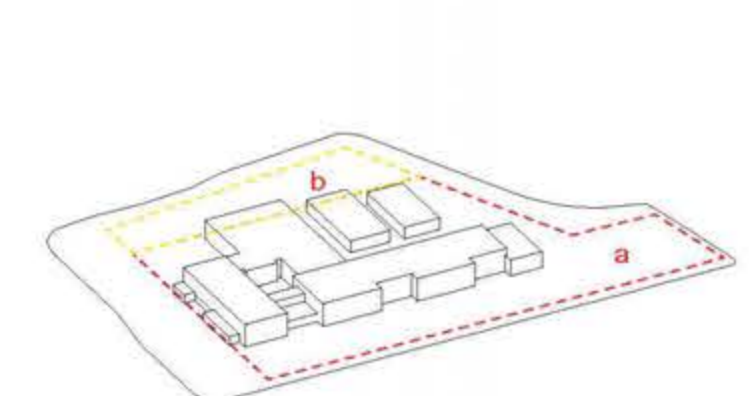
This building is divided vertically with the implantation of an intermediate terrace that becomes in space of leisure and informal work. The remaining floors are intended for students' residence and the roof, as in the residential building, becomes a green area for the residences users.

A	A. BUSINESS INCUBATOR + RESIDENCES	
A.1	Parking lot	1720 sqm
A.2	Multipurpose Room/ Record Studio	700 sqm
A.3	Hall	175 sqm
A.4	Administration	700 sqm
A.5	Showroom	1444 sqm
A.6	Formation rooms	1444 sqm
A.7	Coworking spaces	4332 sqm
A.8	Housing (Residences)	6954 sqm
A.9	Green Area (rooftop)	1900 sqm
B	B. AUDITORIUM + SCHOOL EXPANSION	
B.1	Auditorium	340 sqm
B.2	Offices	100 sqm
B.3	Classrooms	500 sqm
C	C. MIXED-USE BUILDING	
C.1	Parking Lot	6250 sqm
C.2	Storage Area	540 sqm
C.3	Commercial Area	2248 sqm
C.4	Bicycle Parking Lot	378 sqm
C.5	Workspaces	7878 sqm
C.6	Housing Area	23850 sqm
C.7	Social and Leisure Floor	1968 sqm
C.8	Green Area (rooftop)	1689 sqm

DEVELOPMENT OF CONSTRUCTION PHASES

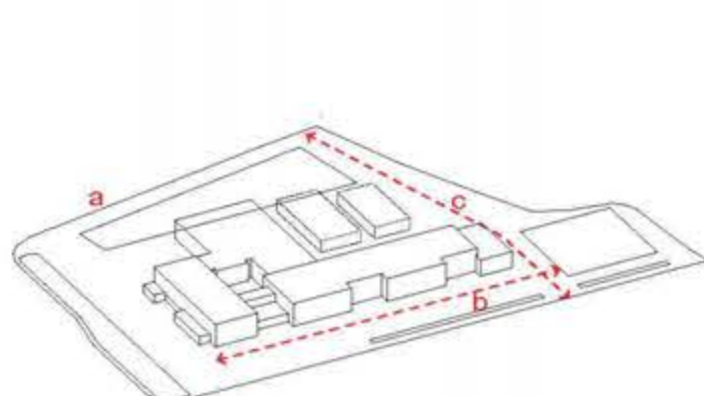


IMG.01. SYNTHESIS CONCEPTUAL STRUCTURAL SCHEME.



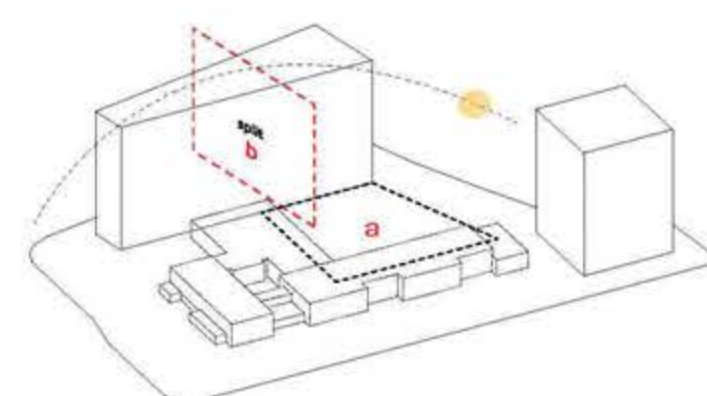
D.01. PROJECT SITE

- a - Municipality-Owned Building (Plot A)
- b - Mediacollege (Plot B)



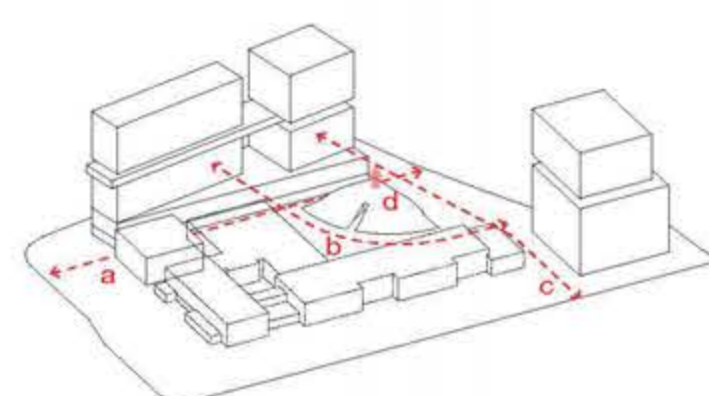
D.02. PROJECT AXIS

- a - Definition of the Transformatorweg front by the urban design developed by the municipality for Sloterdijk 01
- b - The new educational building occupies the existing parking space, at the end of the longitudinal entrance axis. This allows that the mediacollege entrance front area can also serve the new educational building
- c - Secondary circulation for storage and logistics



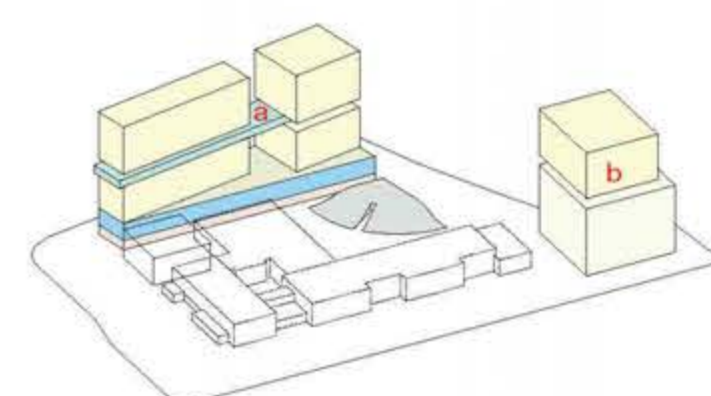
D.03. PROPOSAL

- a - Demolition of mediacollege buildings to create a public square in the center of the complex
- b - The A plot building is split in two to increase the sunlight exposition



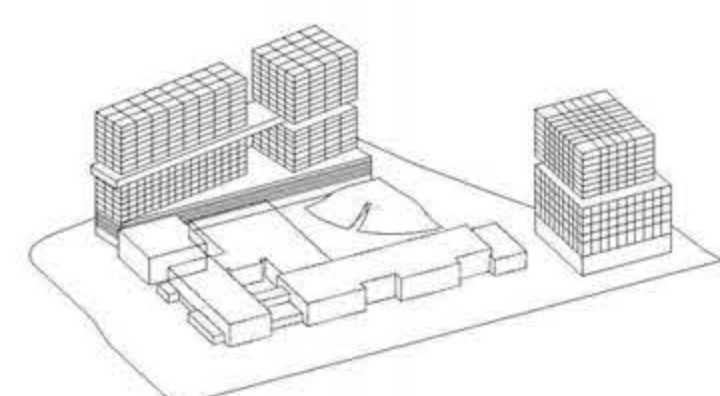
D.04. CIRCULATION AXIS

- a - Transformation of the existent limit into a connection and confrontation axis
- b - creation of a passage through the created void that intensifies the relationship between the multipurpose building and educational public square
- c - maintenance of the secondary interior circulation for logistics
- d - The public square is curved to create a big and covered bicycle parking underneath



D.05. FUNCTIONS

- a - Living and Working - The new multipurpose building accommodates Commercial, Working and Housing places. At the middle of the housing is proposed a social and leisure floor which unifies the two blocks, creating a big public terrace
- b - Educational (Mediacollege Expansion) The building is sliced in two to accommodate student housing on top



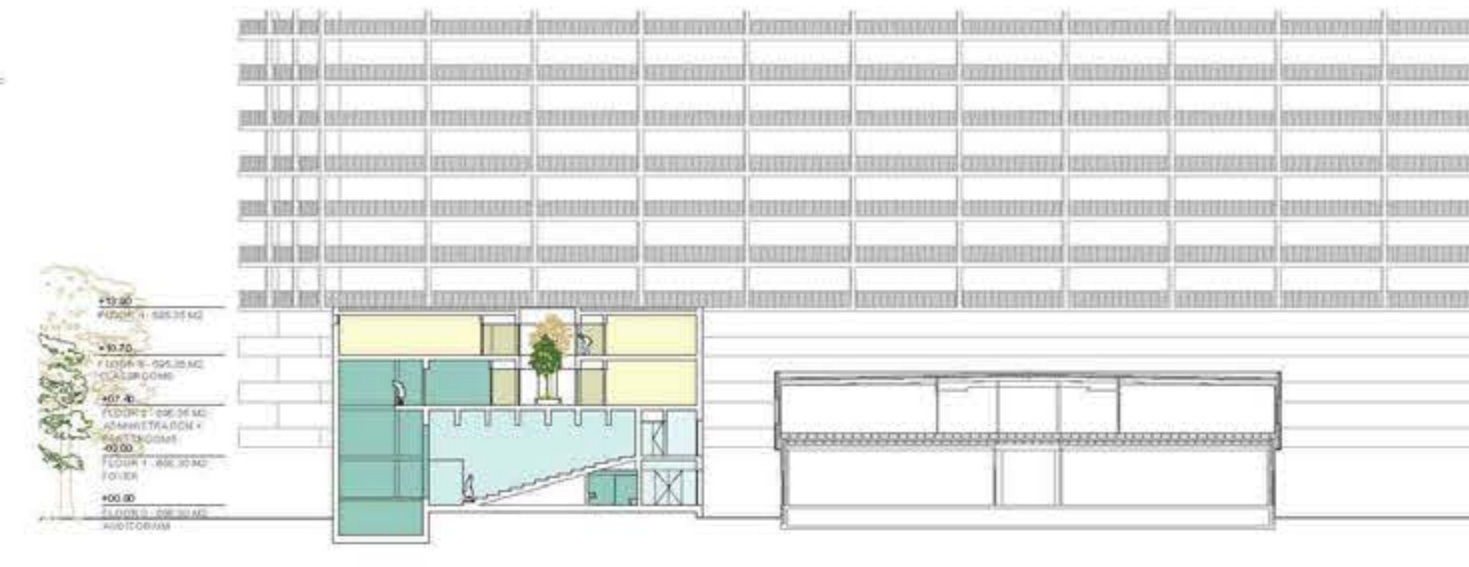
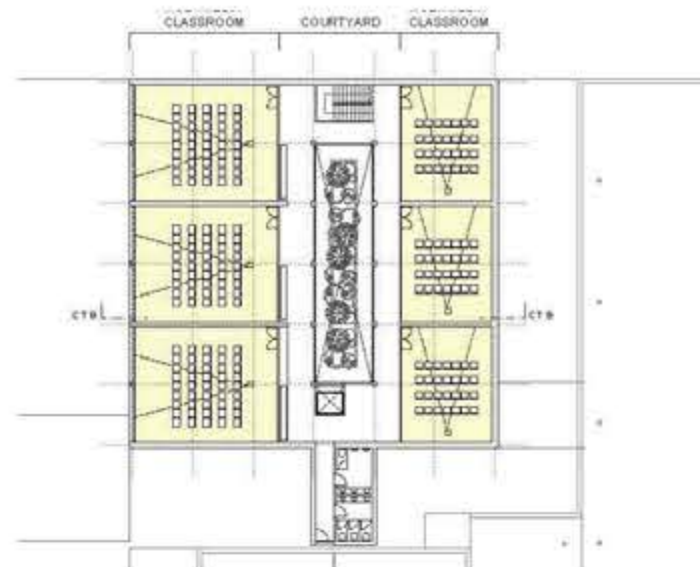
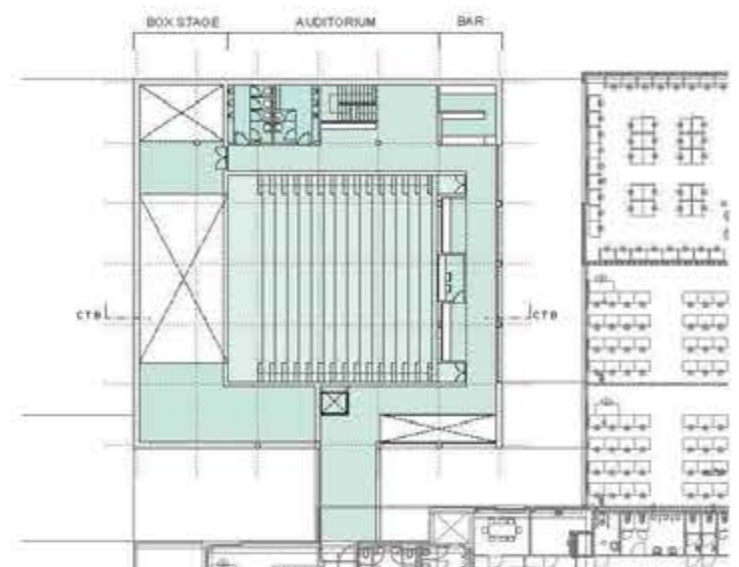
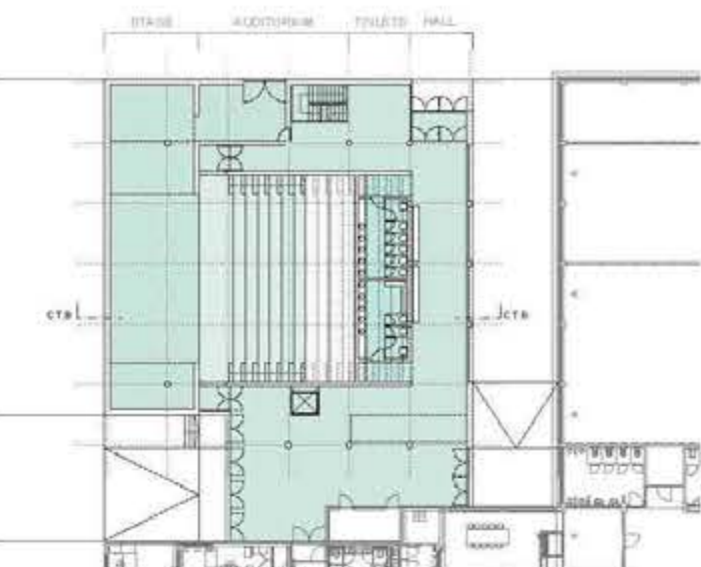
D.06. STRUCTURES

- The structure defines the housing blocks and the educational building. The first is design by a 7.5x5m grid and the second is structured in a 7.5x7.5m grid.



SLOTEDIJK STRUCTURAL INTENSITY

UT694



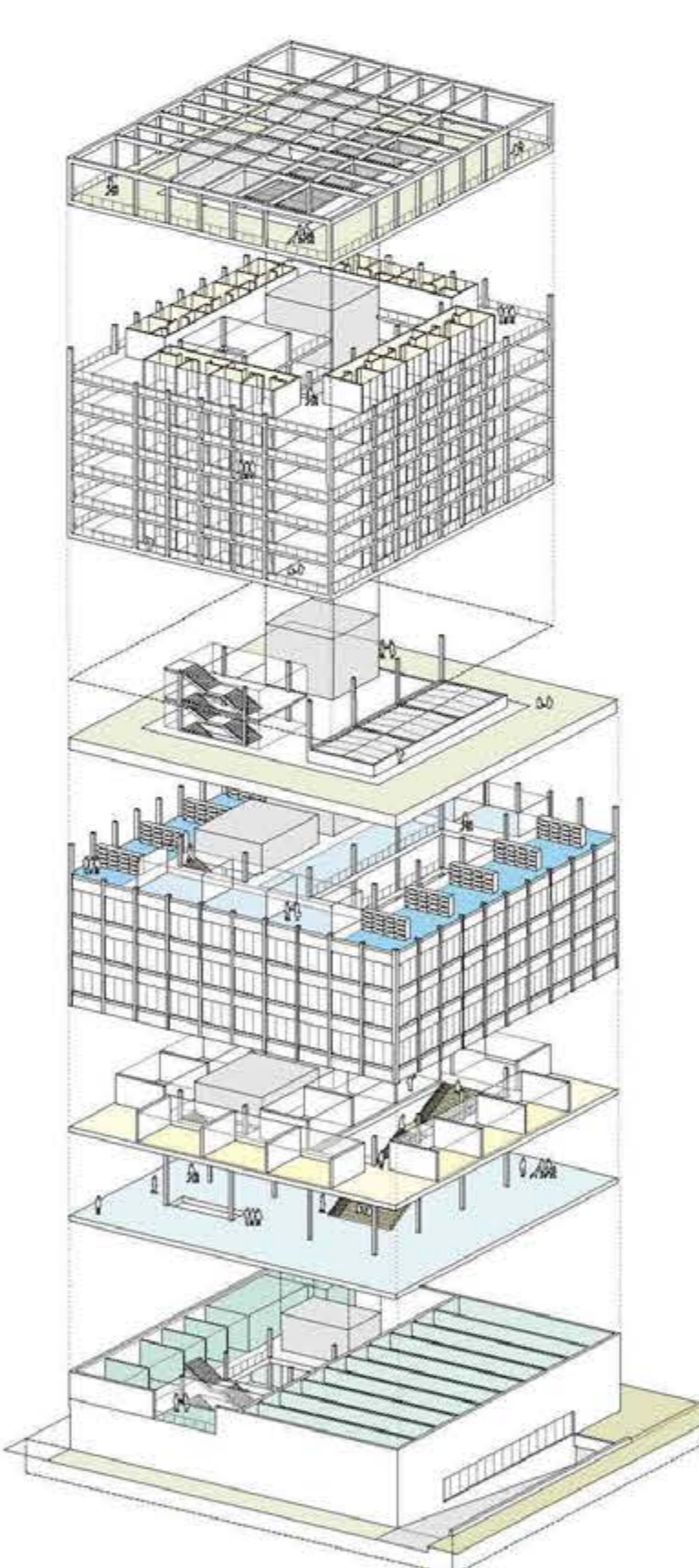
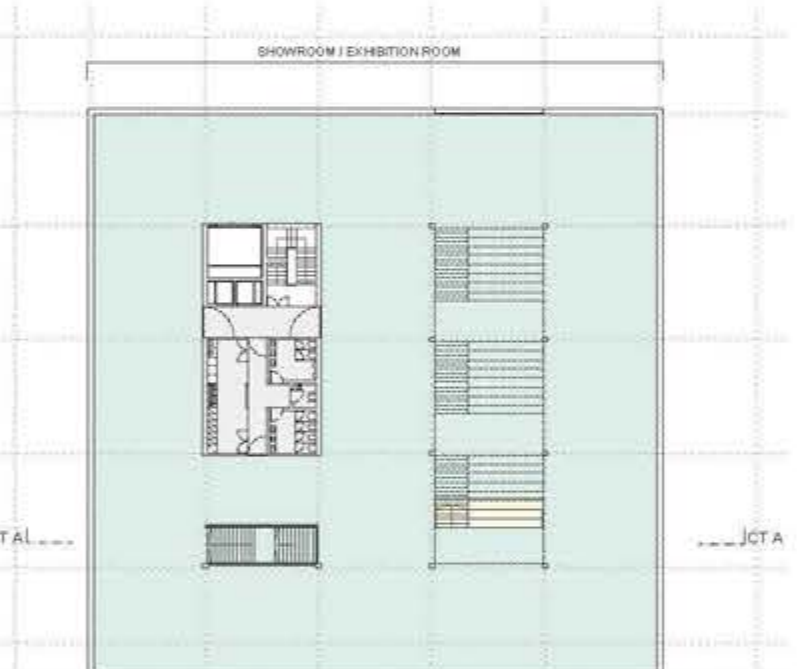
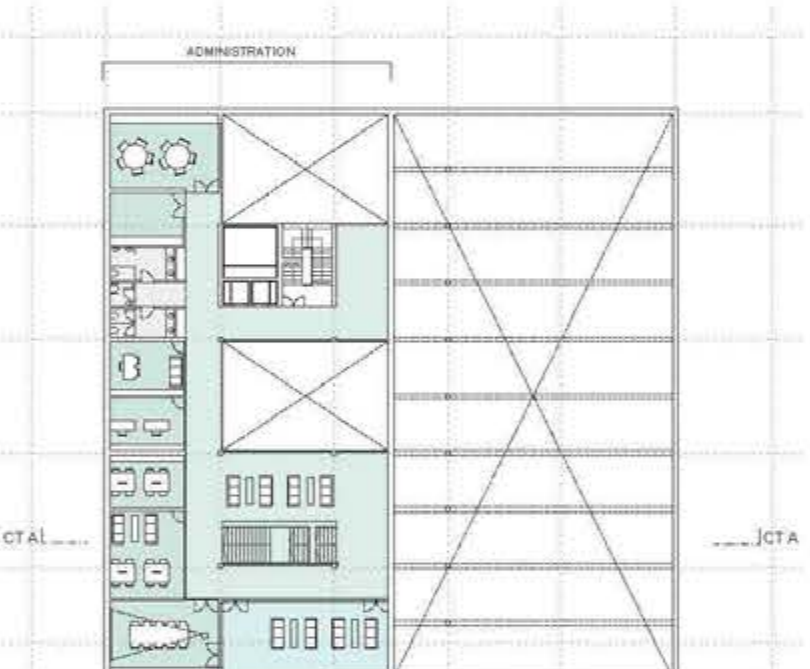
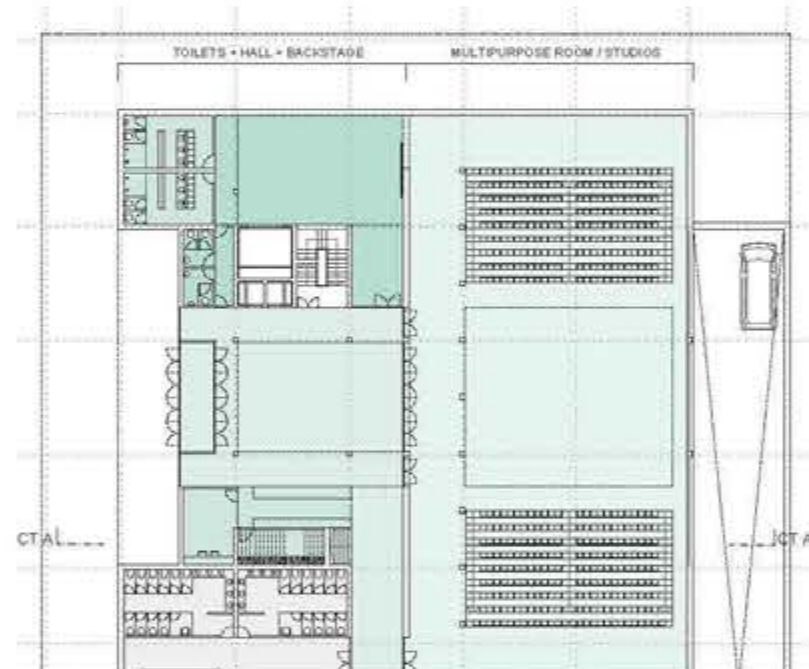
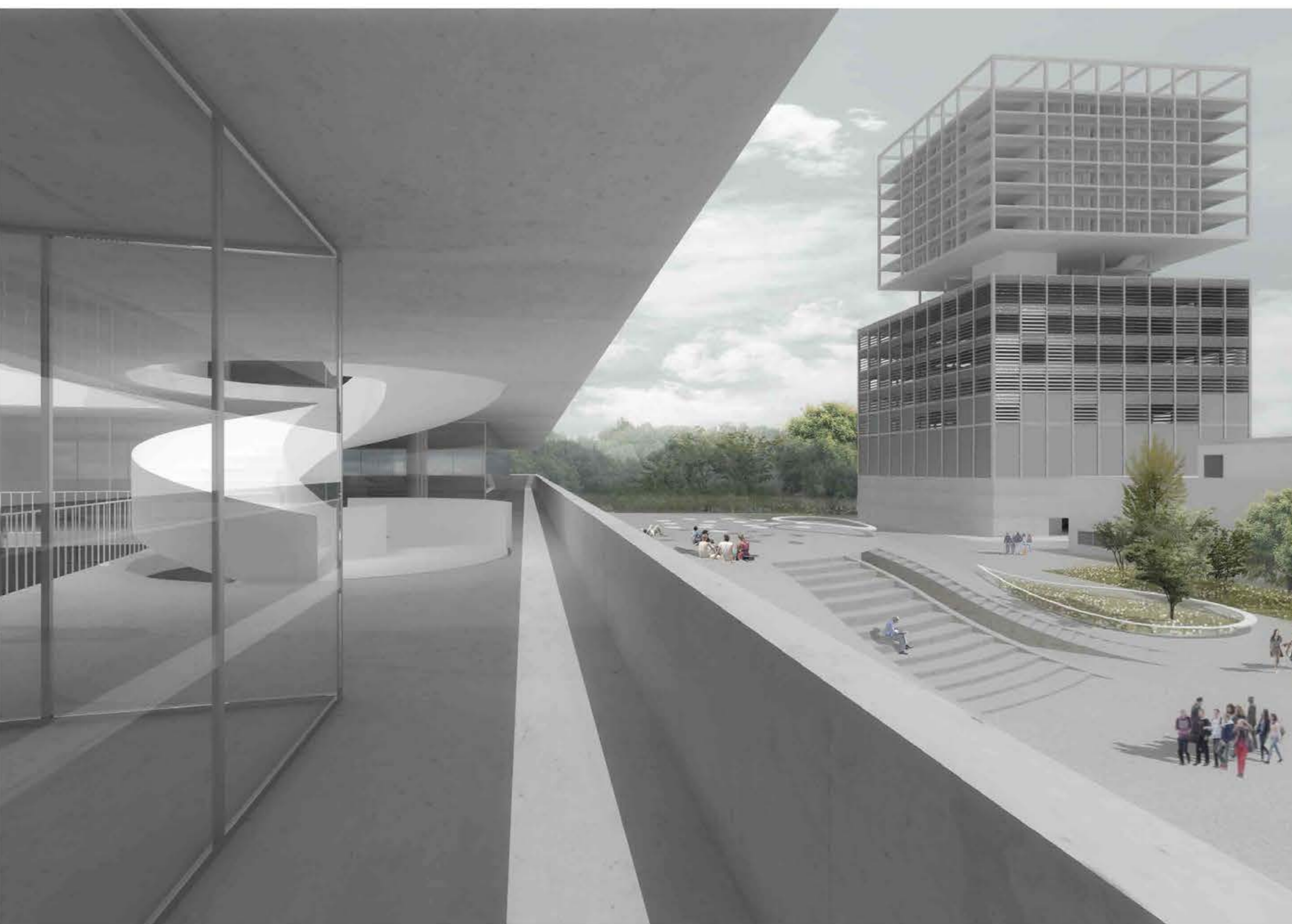
PL.B.00. FLOOR 0
1:500

PL.B.01. FLOOR 1
1:500

PL.B.02. FLOOR 2
1:500

PL.B.03. FLOOR 3
1:500

CT.B CORTE B
1:500



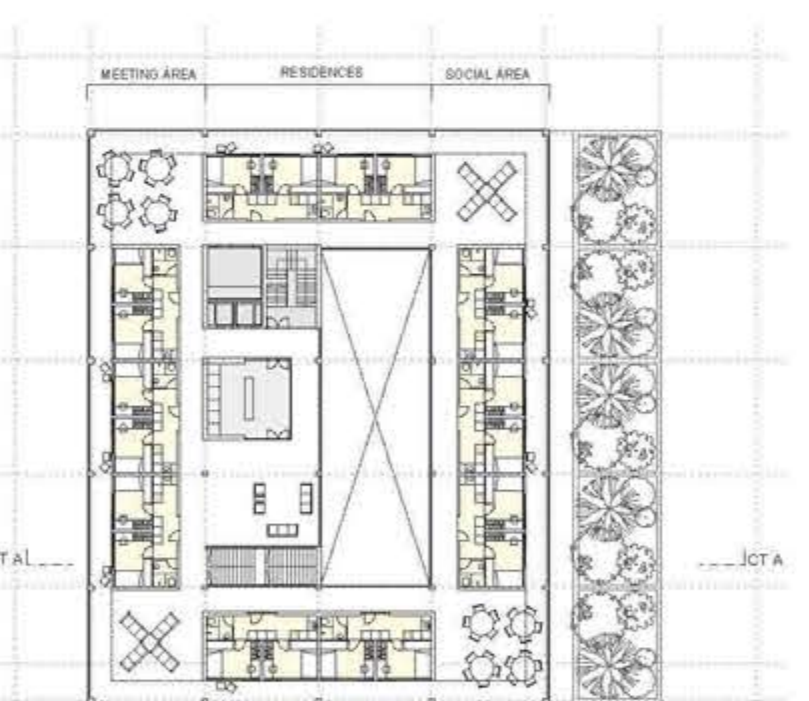
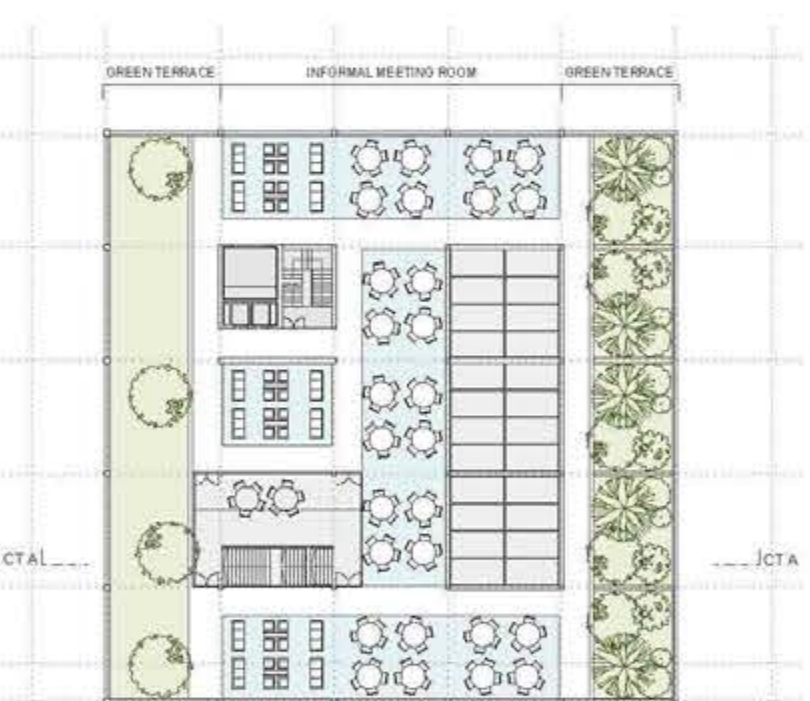
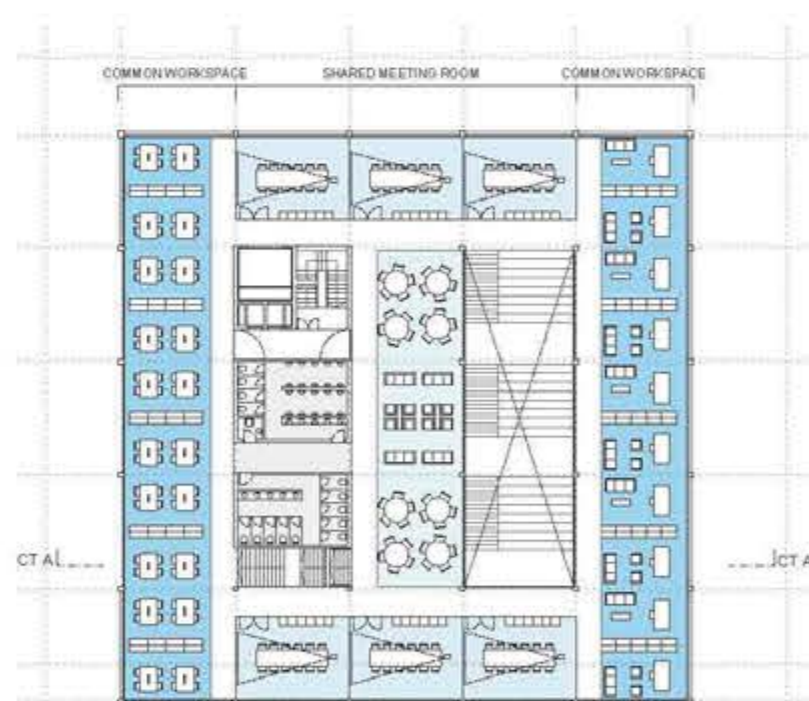
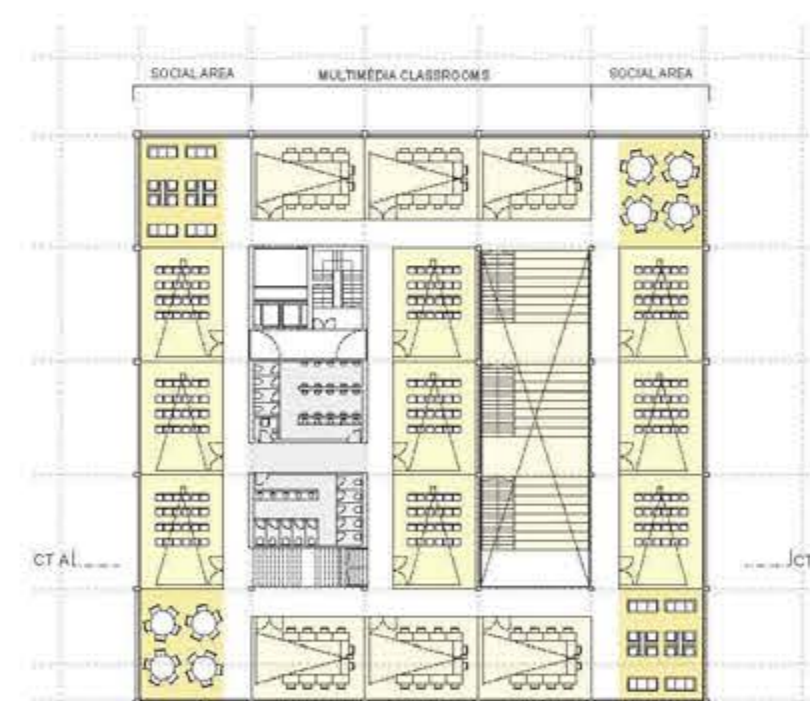
PLA.-1. FLOOR -1
1:500

PLA.00. FLOOR 0
1:500

PLA.01. FLOOR 1
1:500

PLA.02. FLOOR 2
1:500

AX.A AXONOMETRIC VIEW OF BUILDING A (BUSINESS INCUBATOR + RESIDENCES)



PLA.4. FLOOR 4
1:500

PLA.05. FLOOR 5, 6, 7 AND 8
1:500

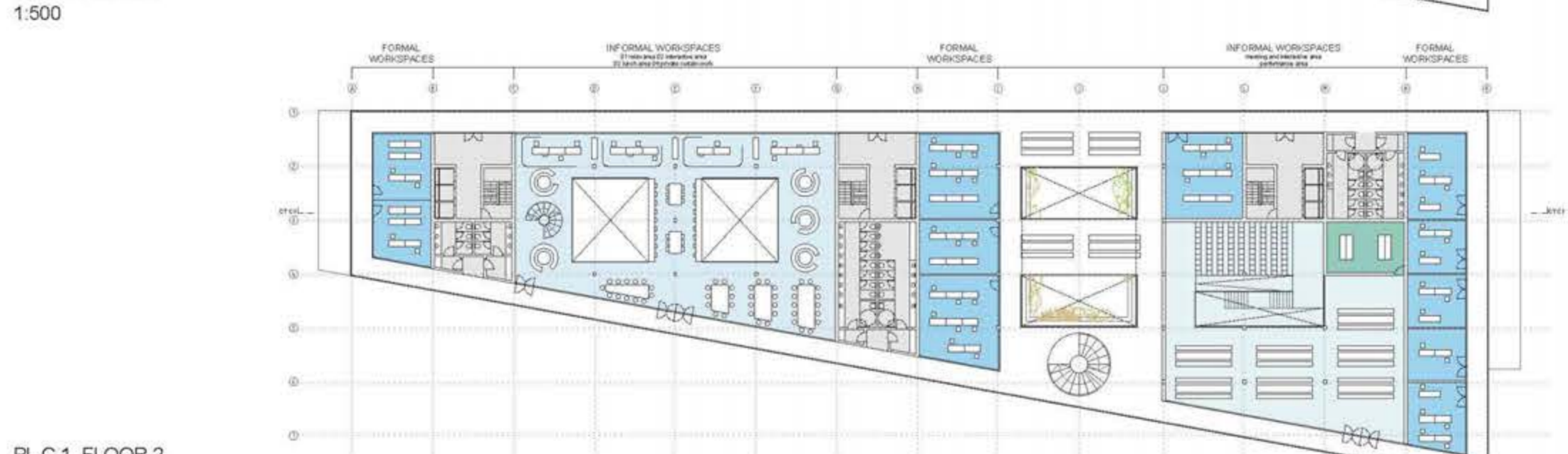
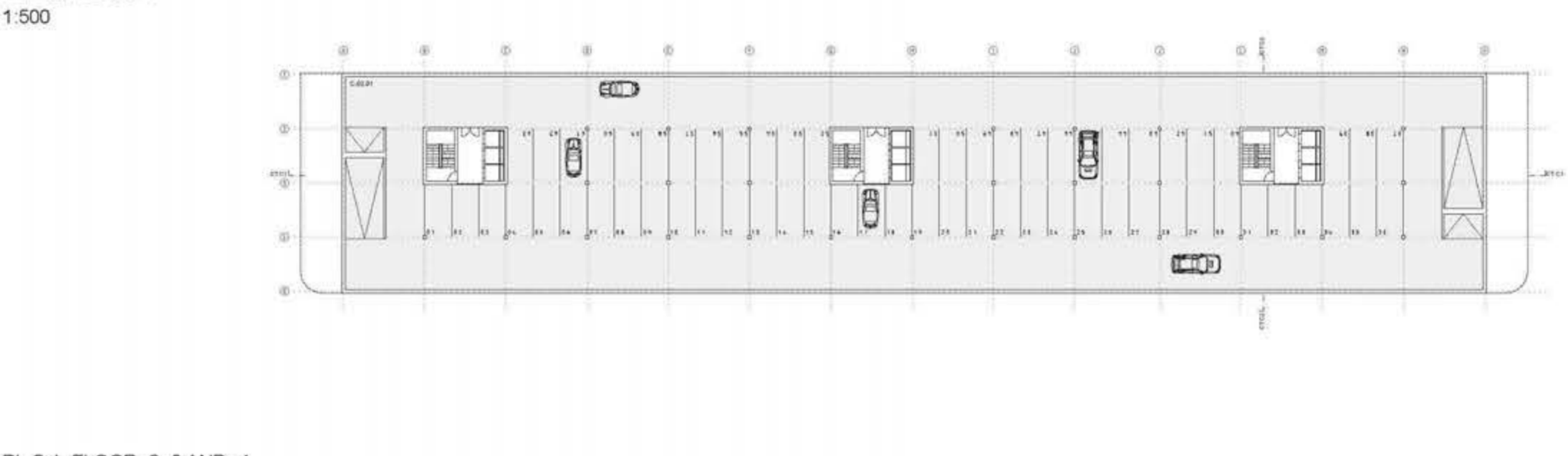
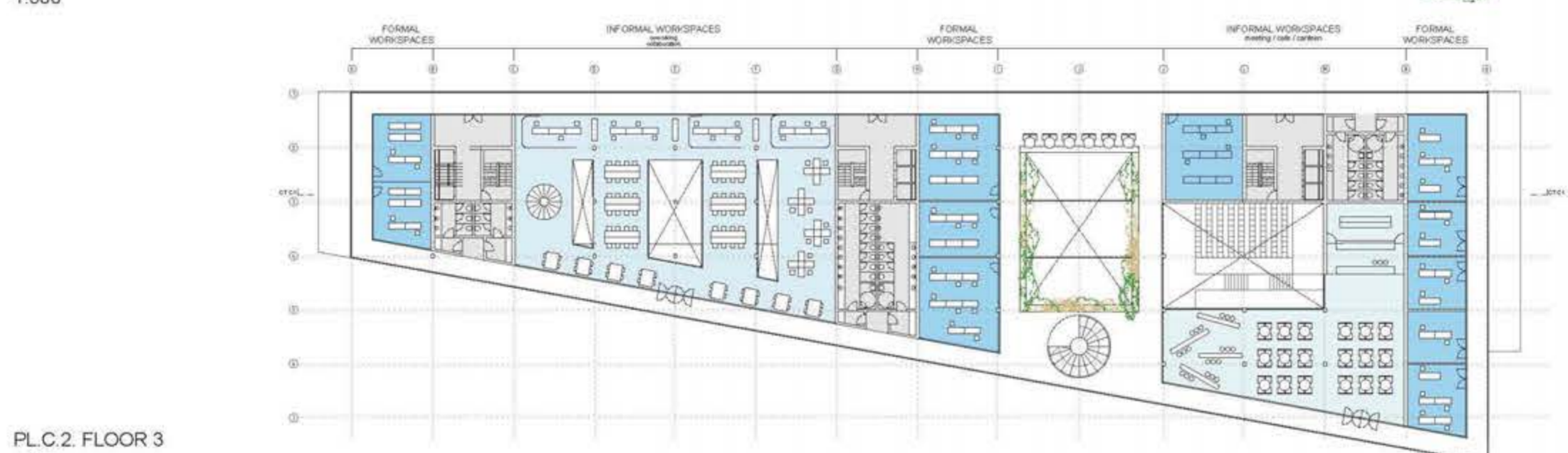
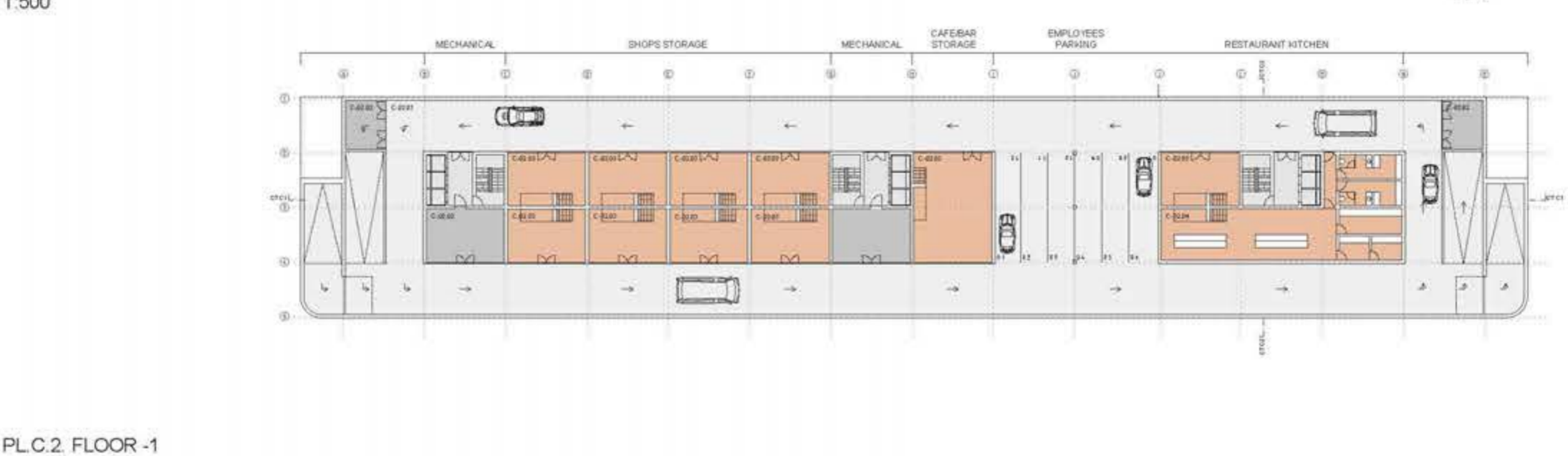
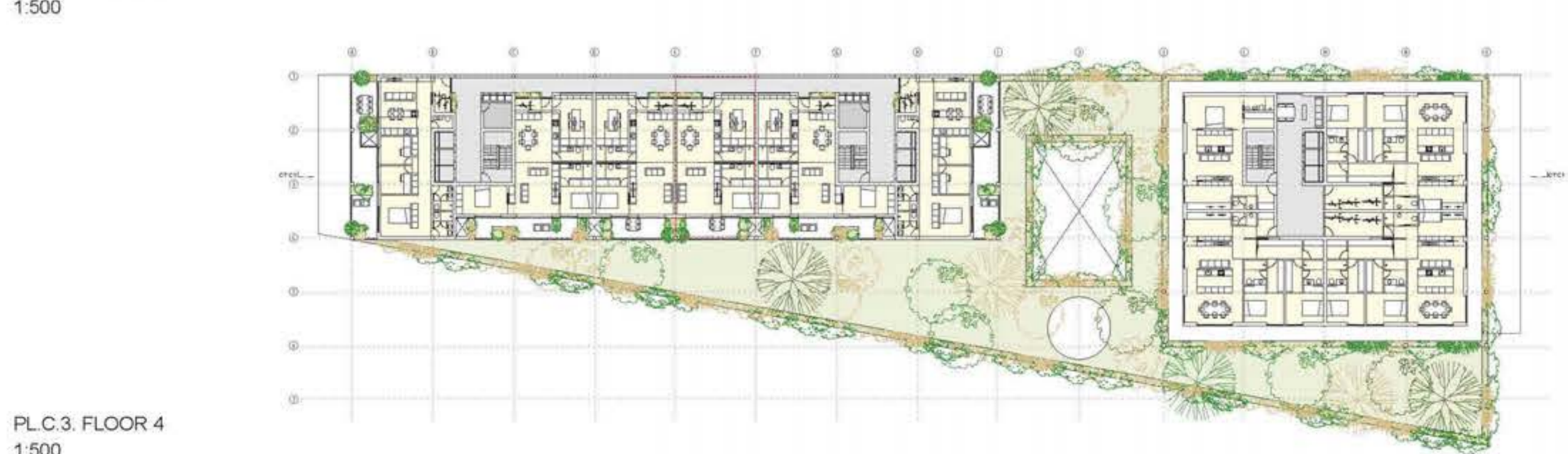
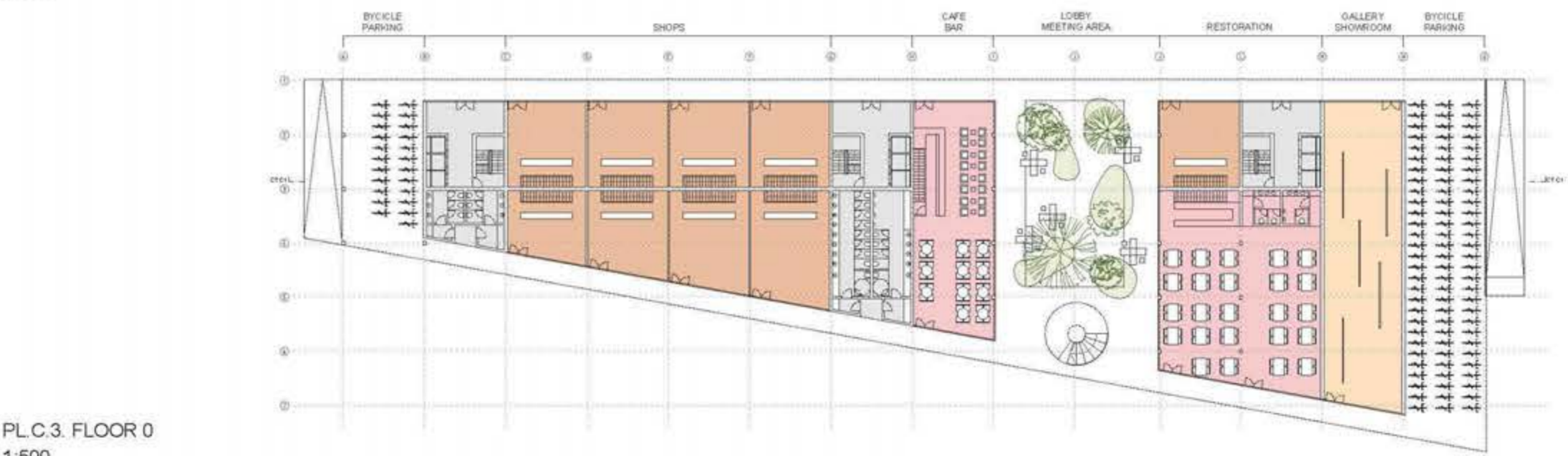
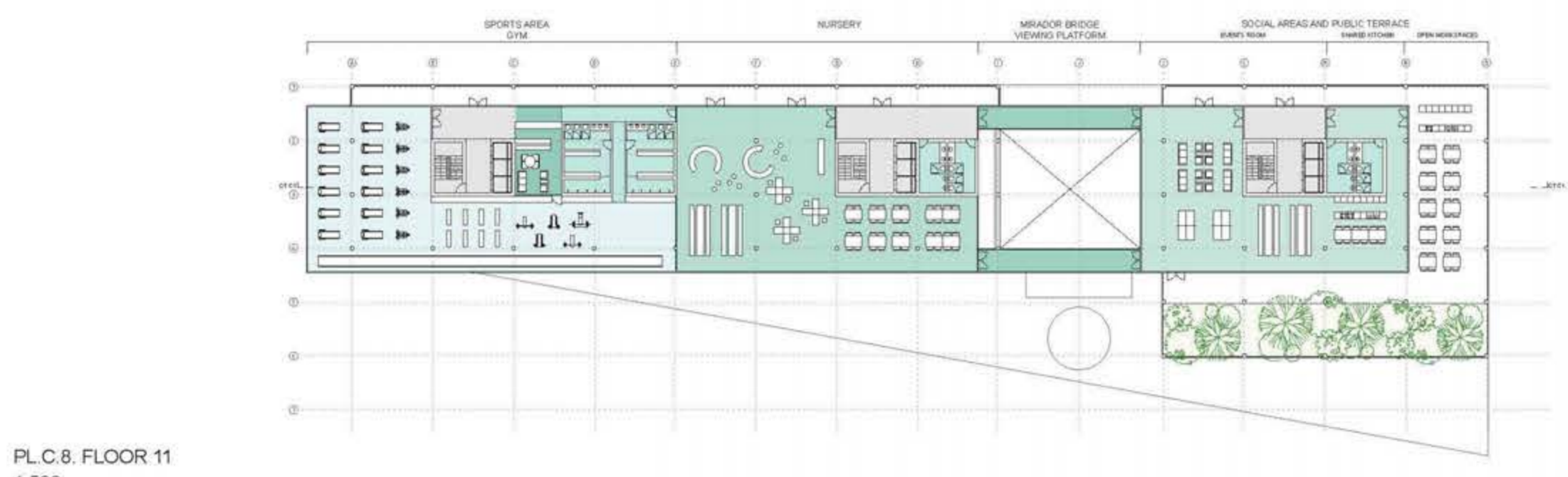
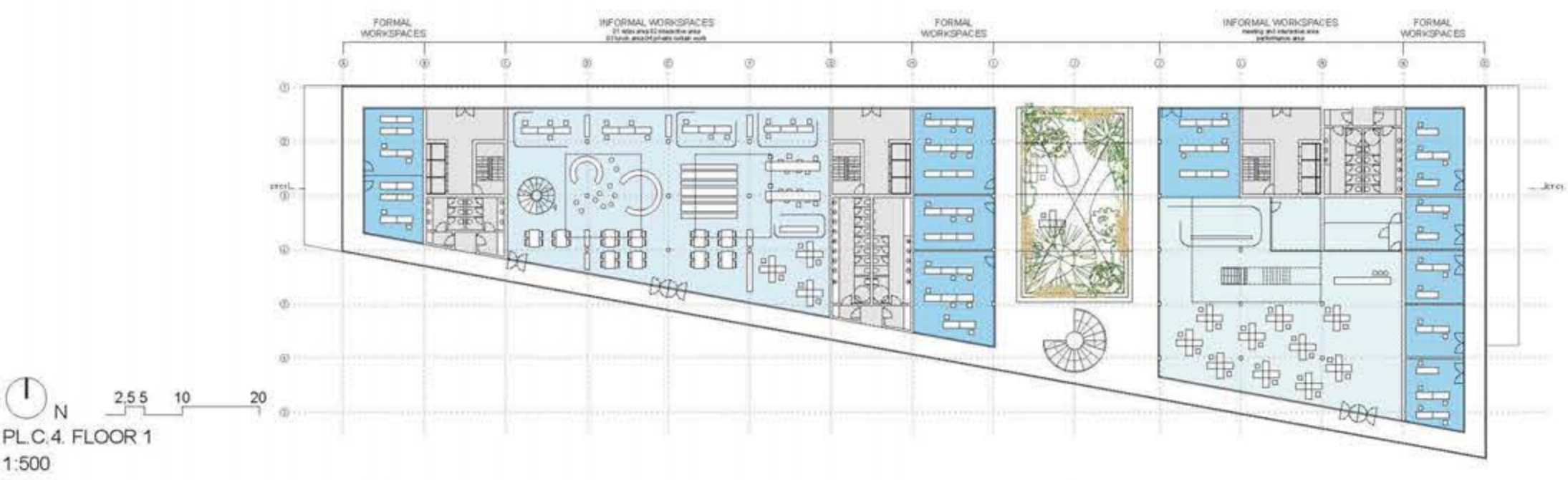
PLA.06. FLOOR 9
1:500

PLA.07. FLOOR 10, 11, 12, 13 AND 14
1:500

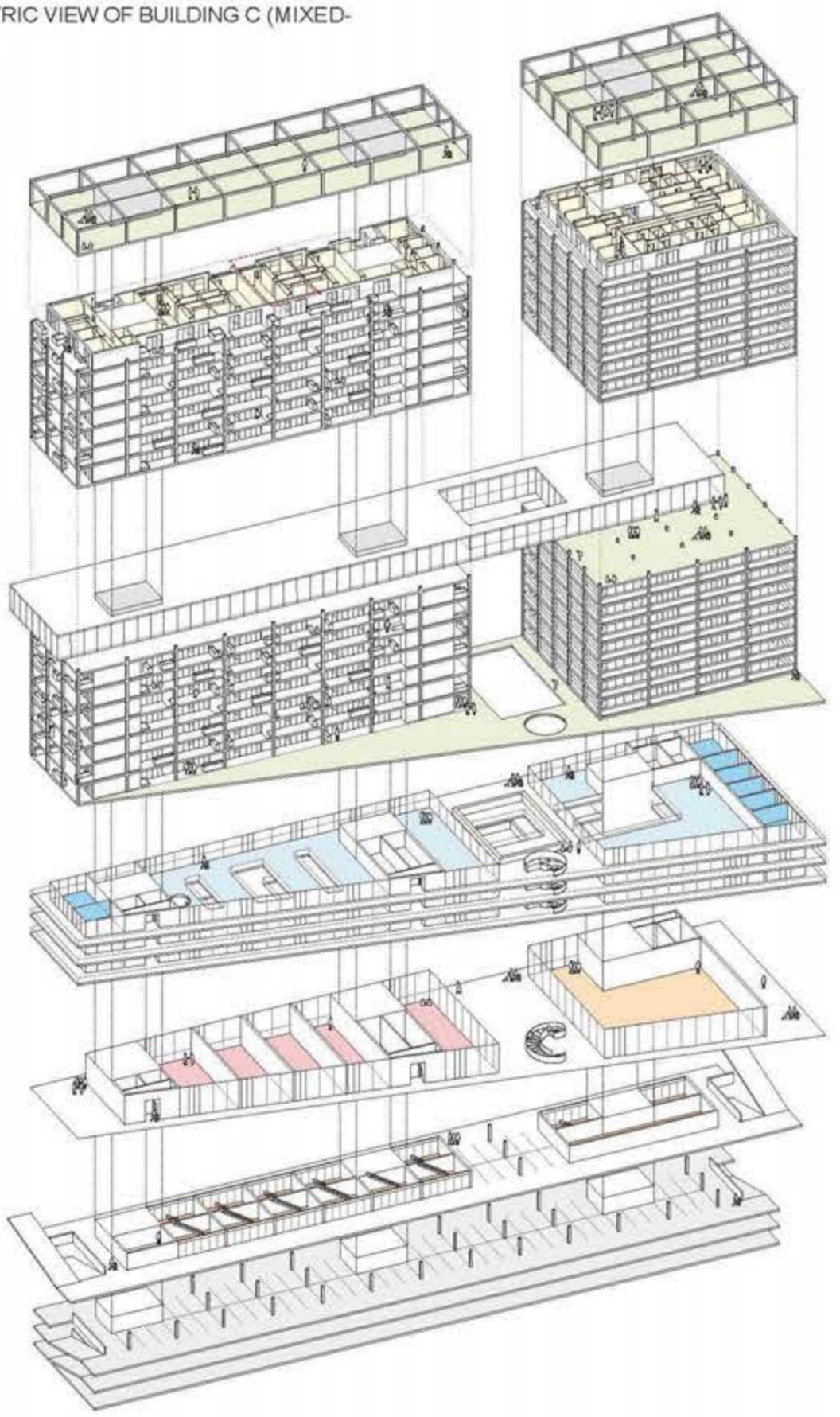
GREEN FACADES
 In this sense the vegetal curtain that was implemented in the facades of the residential building translates in the intention to bring the public space, like what exists in the near westpark, to the private daily life since more and more people are working on their houses, losing themselves contact with the places of outdoor meeting and leisure.
 The intention to create green areas in both ways - the horizontal and vertical planes - is to combat the constant problems of construction and urban life, as it helps to improve air quality, improves the thermal and acoustic insulation of interior spaces by absorbing and isolating noise and helps reduce energy consumption by improving energy efficiency by reducing the temperature in the indoor environment, reducing the need for refrigeration.



UT694



AX.C. AXONOMETRIC VIEW OF BUILDING C (MIXED-USE BUILDING)



1. A window that allows the contact between the workspace and the gallery to bring the business closer to the public;
 2. Storage space or parking for bicycles;
 3. Plan that divides the private area from the work area during the day;
 4. The dining room can be transformed into the meeting room or the group work room;
 5. A bed in a closet allows the office to be transformed into an extra room;
 6. Vases for home-grown agriculture;
 7. The vases and voids are positioned to make the separation between the apartments;
- The remaining typologies follow the same intentions as in this example

PLTC. APARTMENT TYPE
1:100

