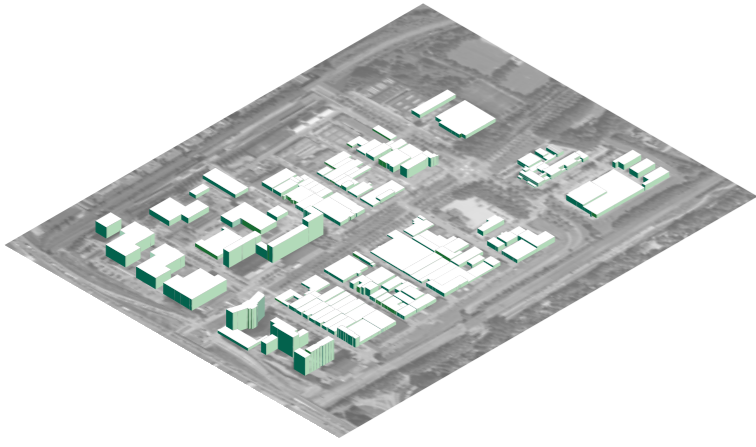


TOWER-COURT CITY

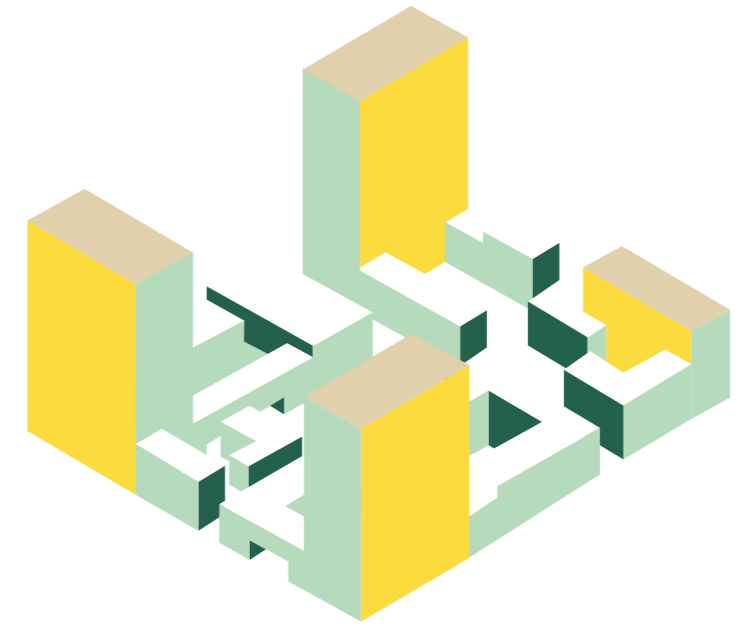
Transformatorweg-Mediaschool plot densification

TYPOLOGY COMPARISON

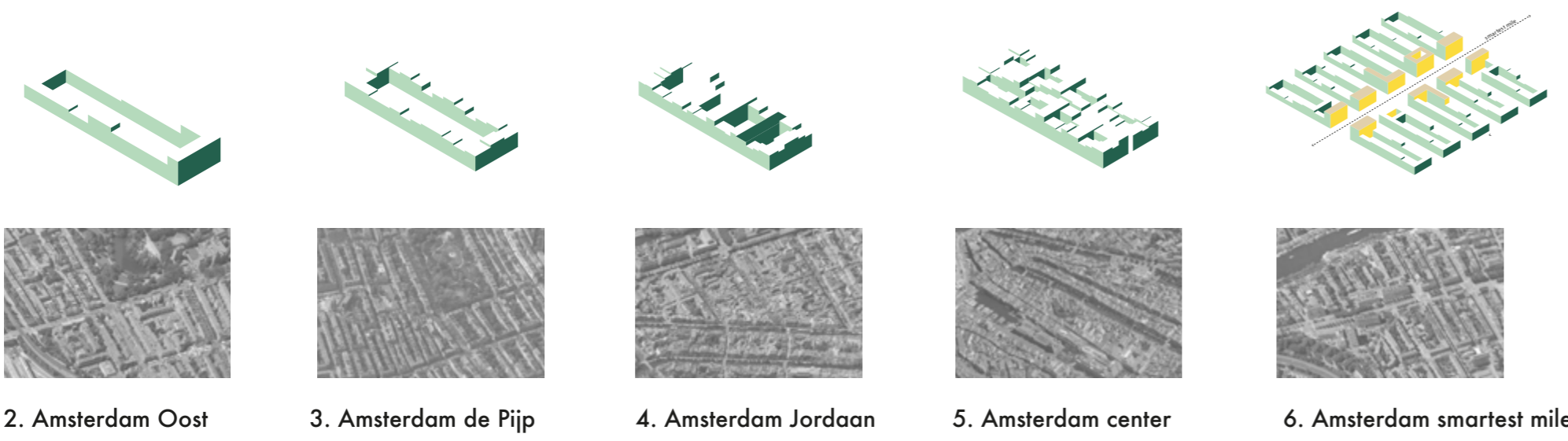


1. area context of project site _Transformatorweg

The site at transformatorweg is the end of a sequence of low rise industrial/ business park buildings along side the main road. Densification asks for continuity from Amsterdam earlier neighborhood and identity of this particular area. An analysis of Amsterdam earlier neighborhood shows that urban block is a successful typology for the city. One can see graduate densification inside a typical amsterdam neighborhood from the city's oldest neighborhood Amsterdam centrum to newly uprise one as Amsterdam Oost.



As the traditional courtyard typology cannot meet the demand of density, we propose the typology of towers and courtyards to create a diverse mix/ use neighborhood. Towers as beacon and showcase for the city. There are different public space creating an alternating rhythm on the elevation showing the city different public and production programs. Courtyards as workshops and playgrounds to facilitate neighborhood activities as well as create a sense of belonging as an Amsterdamer. These courtyard with the variety of themes share same key words of urban identity, which is local productive features that exist and active in local area and influencing the future production on both urban level and micro level.



courtyard with productive local identity

URBAN PHASING



1. SITUATION
Replace media school with the new urban context of Tower-court city.

2. STREET
Restructure the street to start the urban atmosphere of a Tower-court city.

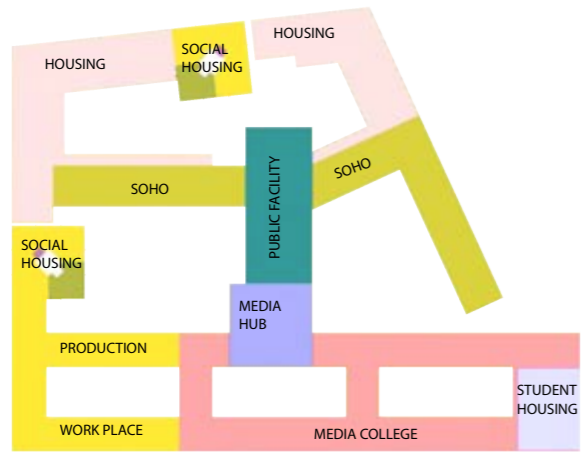
2. ZONE
Tower-court city as a context stamp being imprinted to create a zone of mix-use, local programic identity and productive features.

TOWER-COURT CITY

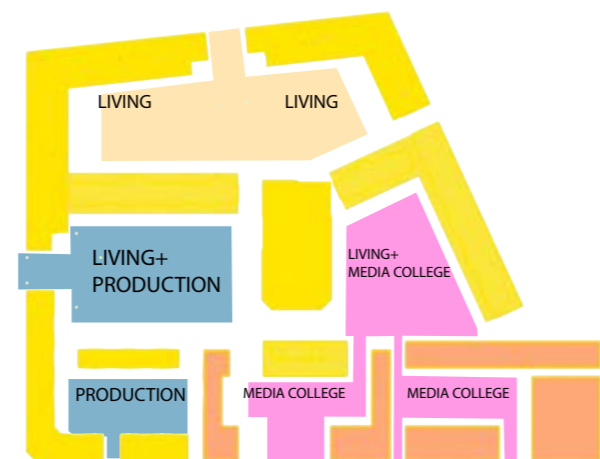
Transformatieweg-Mediaschool plot densification

TPOLOGY COMPARISON

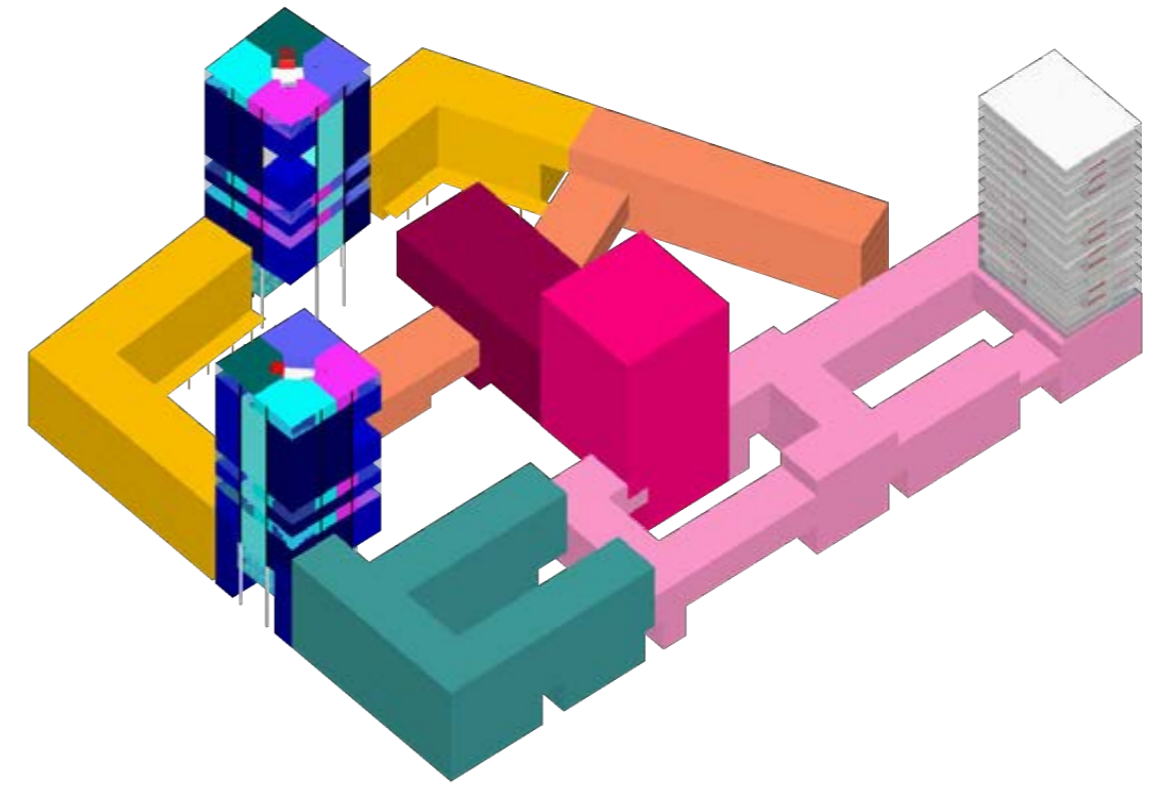
A network of courtyards with towers are settled together and connected. Each courtyard has its theme according to the urban context in this area and relationship with other significant zones in Amsterdam such as city center and the west park. Thus towers are located with the most accessible streets. In the center of this network, public building is the core, this is the building belong to the Media School but shares within the whole community.



programs



courtyard themes+connection

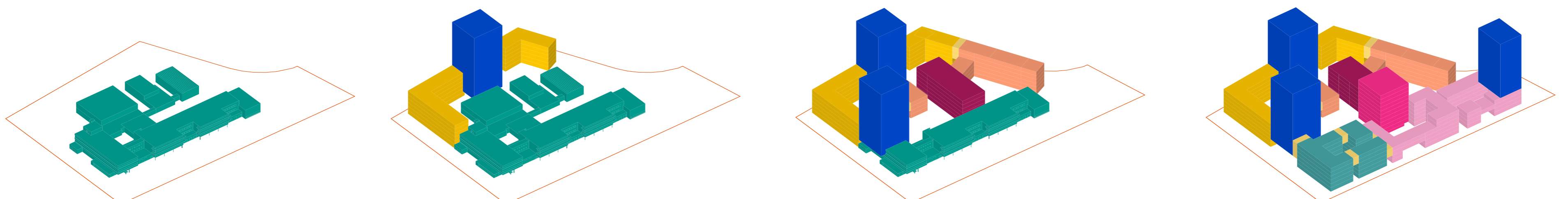


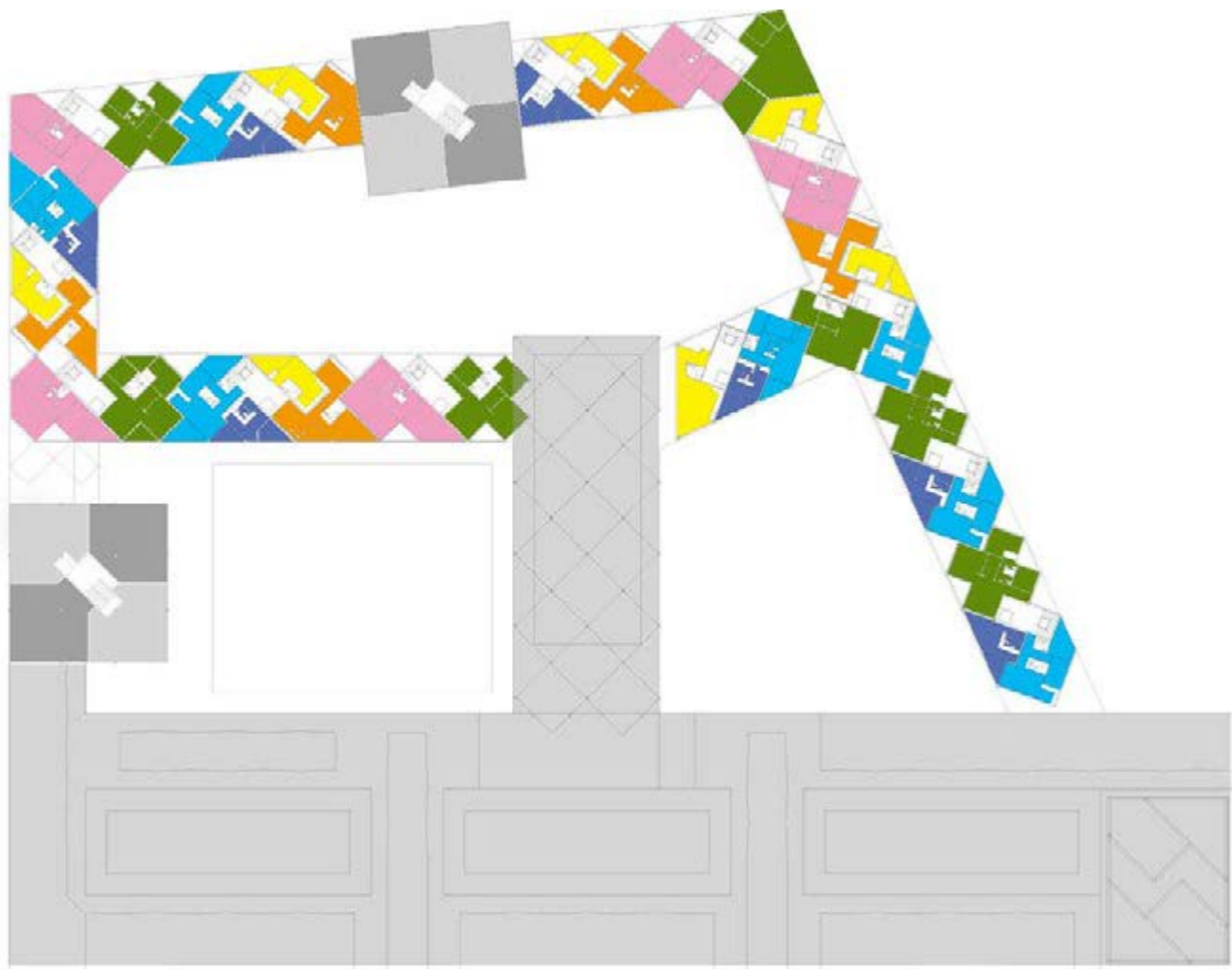
massing



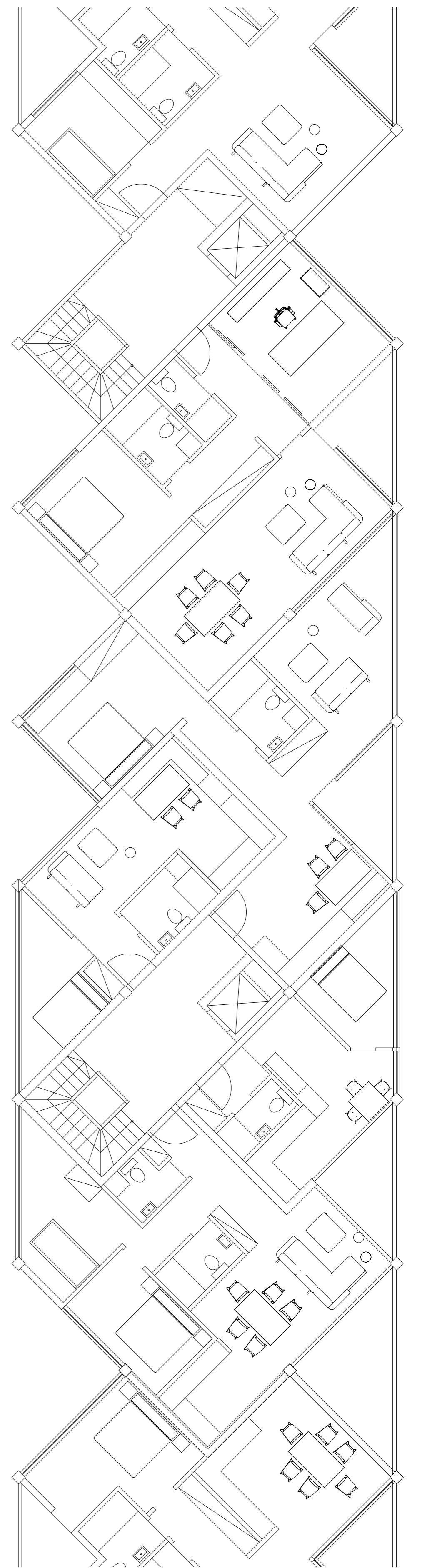
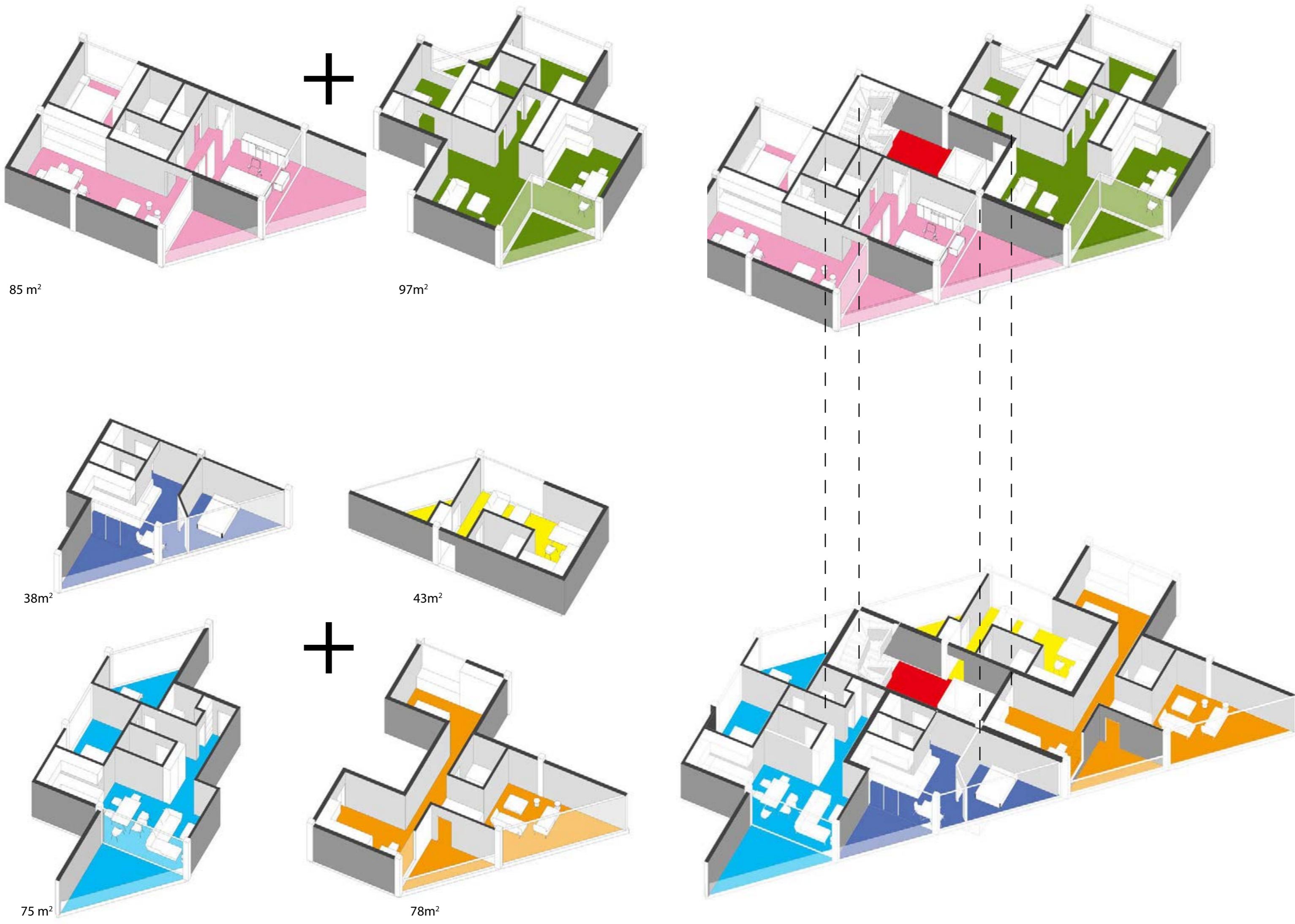
ground floor 3D

ARCHITECTURE PHASING





variation



section 1:400

