

ANALYSIS AND DIAGRAM EXPLAINS IDEA OF MIXED - POLIS - 1:5000

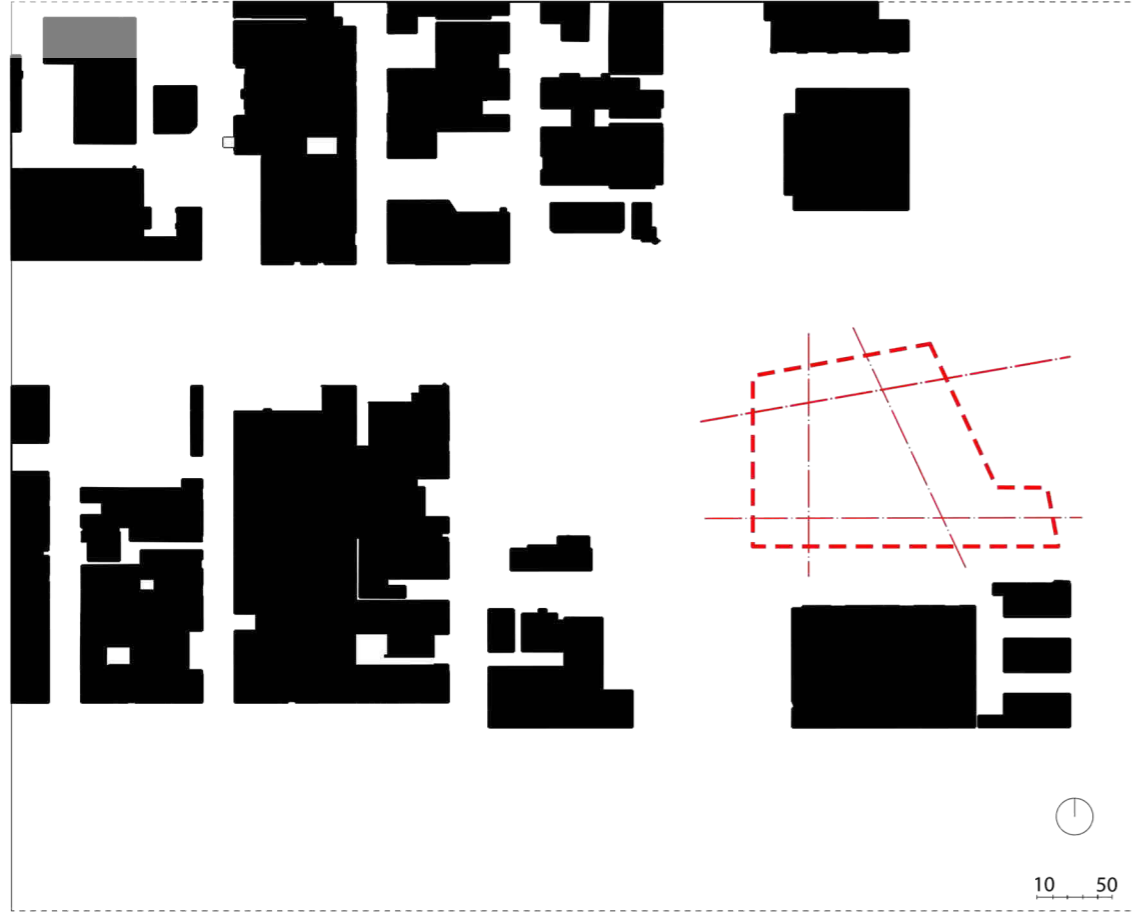


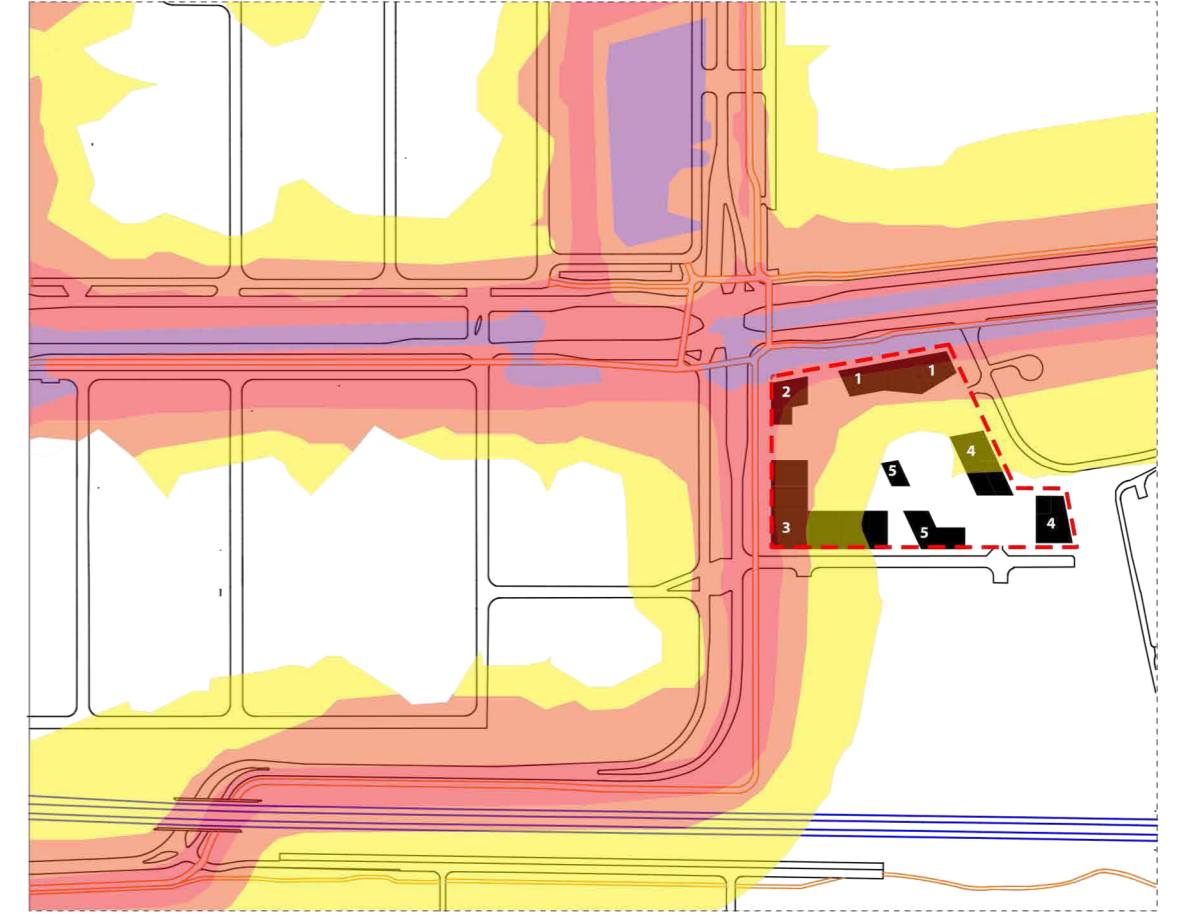
DIAGRAM OF SPATIAL DIRECTION

This diagram shows the **MAIN AXES**, that were the basis for creating a spatial layout of the concept.



DIAGRAM OF URBAN COMPOSITION

This diagram shows the **LAYOUT** of the **URBAN CONCEPT**. Due to the fact that the surrounding buildings are low and extensive - mainly warehouses and commercial pavilions - idea of **MIXED POLIS** was designed as **TOWERS** around the boundary of the plot and leaving spaces between them undeveloped. The green shape illustrates the circulation between buildings and how the complex is connected with neighborhood.



FUNCTIONAL AND NOISE DIAGRAM

This scheme illustrates the zoning in relation to the noise intensity around the plot.

1. **STUDENT HOUSING**
2. **OFFICES / STAR-UPS / CO-WORKING PLACES**
3. **MEDIA COLLEGE**
4. **RESIDENTIAL**
5. **MULTI FUNCTIONAL PAVILIONS**

Two tower of **STUDENT HOUSING** and one tower of **OFFICES** create a kind of barrier protecting inner spaces of noise from Transformatorweg street. It should be added that not only noise analysis influenced on zoning. It was important that MediaCollege should be located in accessible place - to be come a catalyst of culture, science and entertainment in this area. **RESIDENTIAL** located in the most silent places on the plot.



DIAGRAM OF LEVELS AND SPACES BETWEEN BUILDINGS

- The plot was divided for three platforms of three different levels:
1. **COMMON SPACES FOR STUDENTS** adapted for small event, free time spending.
 2. **WELCOME** and **MAIN PLAZA** - LEVEL 0.0 - available for everyone, the most public zone on the plot with **GREEN ARTERY**, which is continuation of West Park, consists three triangular pavilion - spaces for small retail.
 3. **MEDIA SQUARE** - LEVEL +5.0 - spaces adapted as a chill out zone for student to spending time between classes, organizing school events/festivals. Under platform there are spaces belong to MediaCollege such as: entrance hall with reception, canteens, common and working spaces for students.
 4. **RESI SQUARE** - LEVEL +6.0 - is the most private space on the plot, dedicated specially for inhabitant from this area, includes playground and green spaces. Under platform there is parking space for about 4000 bikes, 50 cars and 300 scooters, services space for residential and MediaCollege, school's storage and technical rooms.



DIAGRAM OF EXISTING AND NEW GREENERY

One of the main idea for this project was to incorporate green area which border plot from east side to its interior spaces. It allowed to design **GREEN ARTERY** which is continuation of West Park. The green arrow shows the newly designed high greenery.

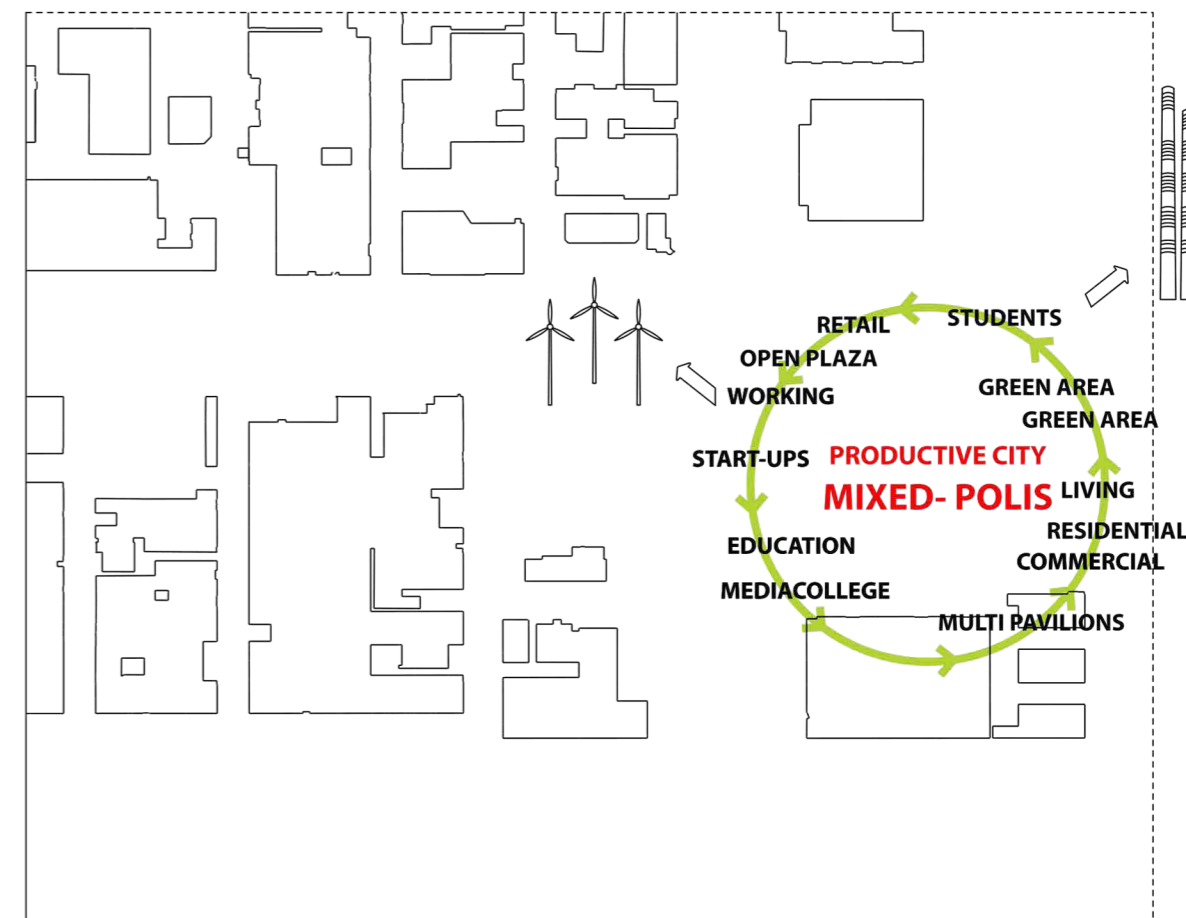
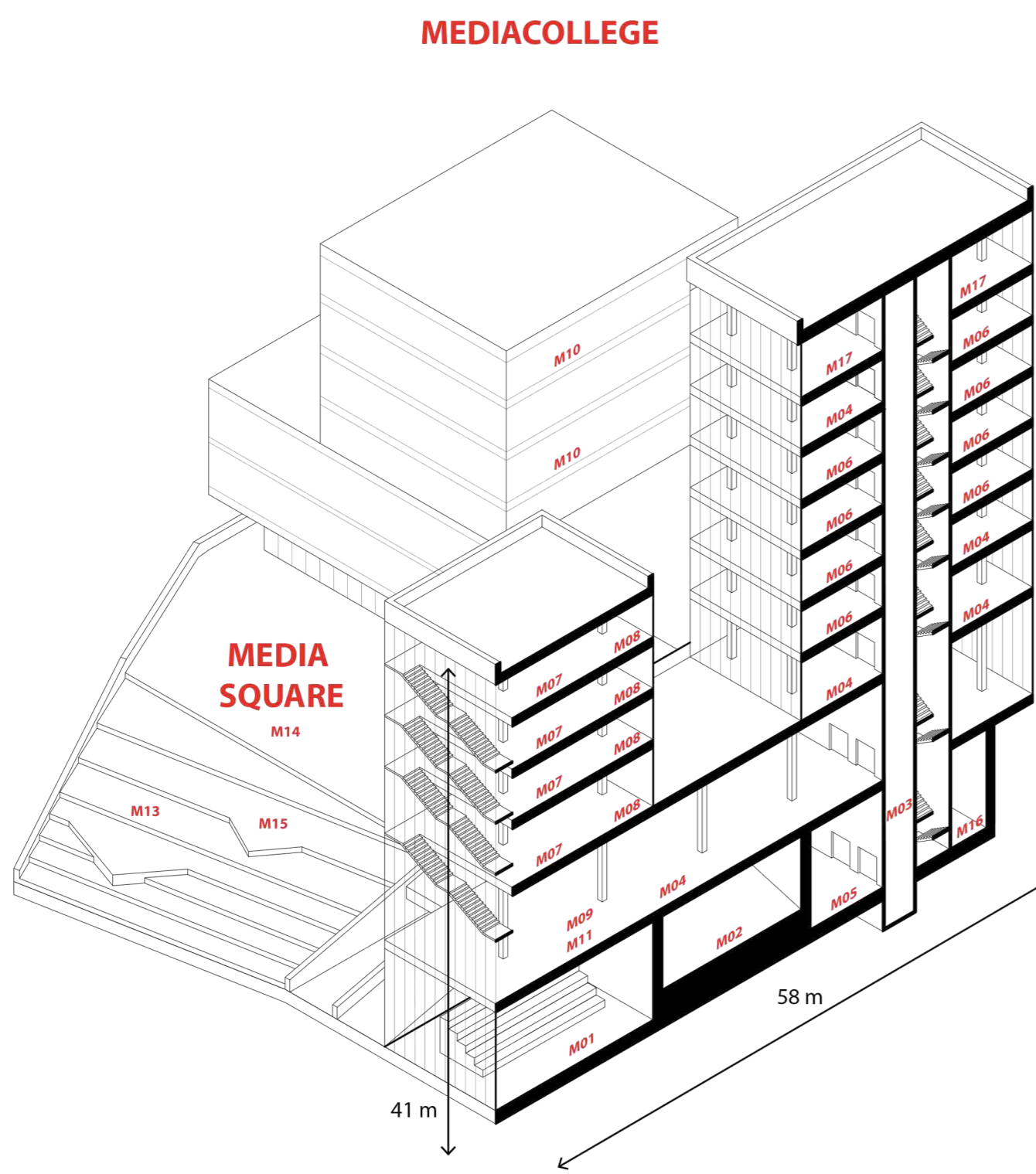
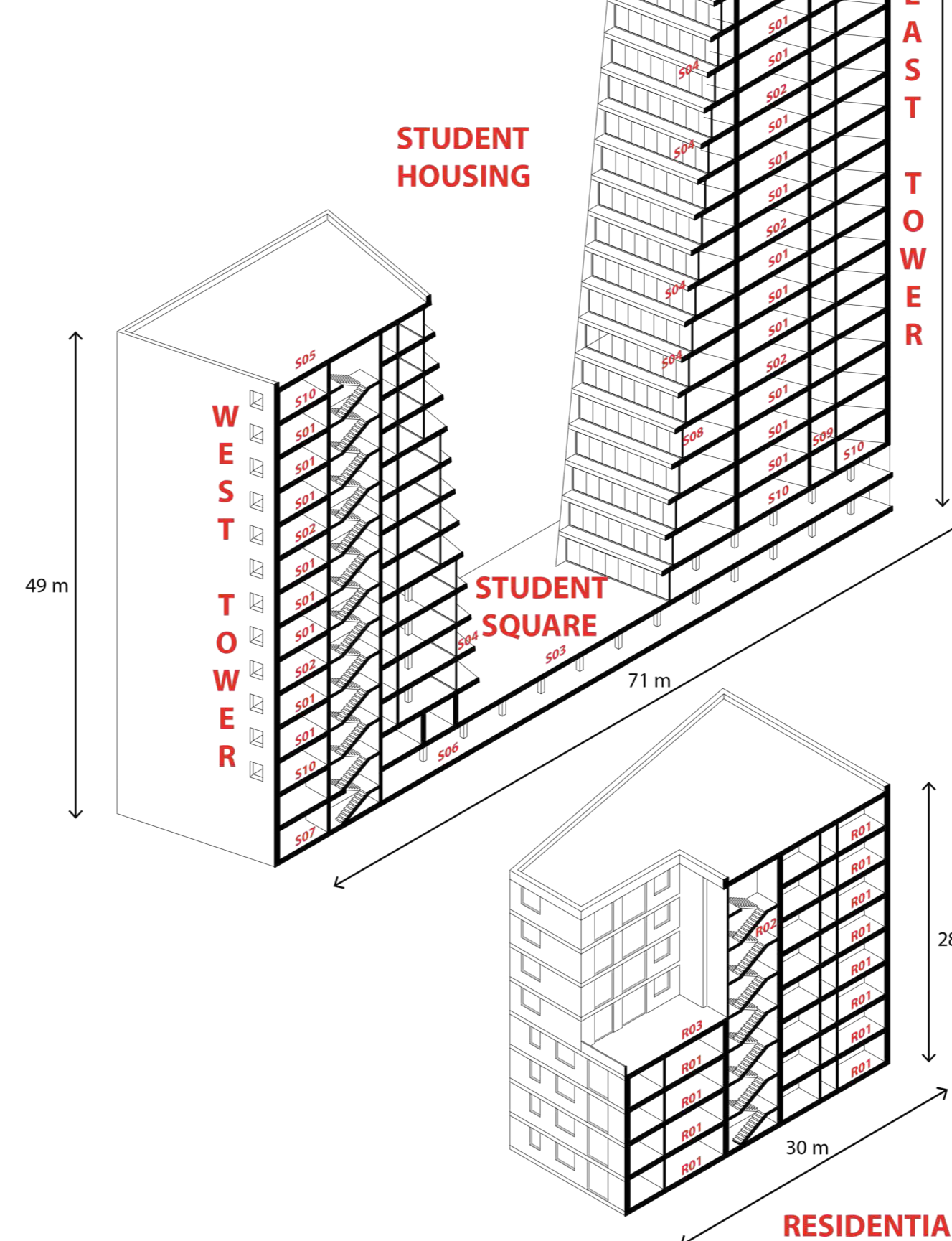


DIAGRAM ABOUT PRODUCTIVITY MIXED-POLIS

Productivity of the city in **MIXED-POLIS** project consist of spatial arrangement of buildings about educational, living, commercial and working function. In this concept the most important was relation between those buildings. Decision to release the inner space between buildings requires to design buildings in the form like **TOWER** of a maximum height of 65 meters. Form of the towers refers to the typical industrial building in surroundings: chimneys and windmill.

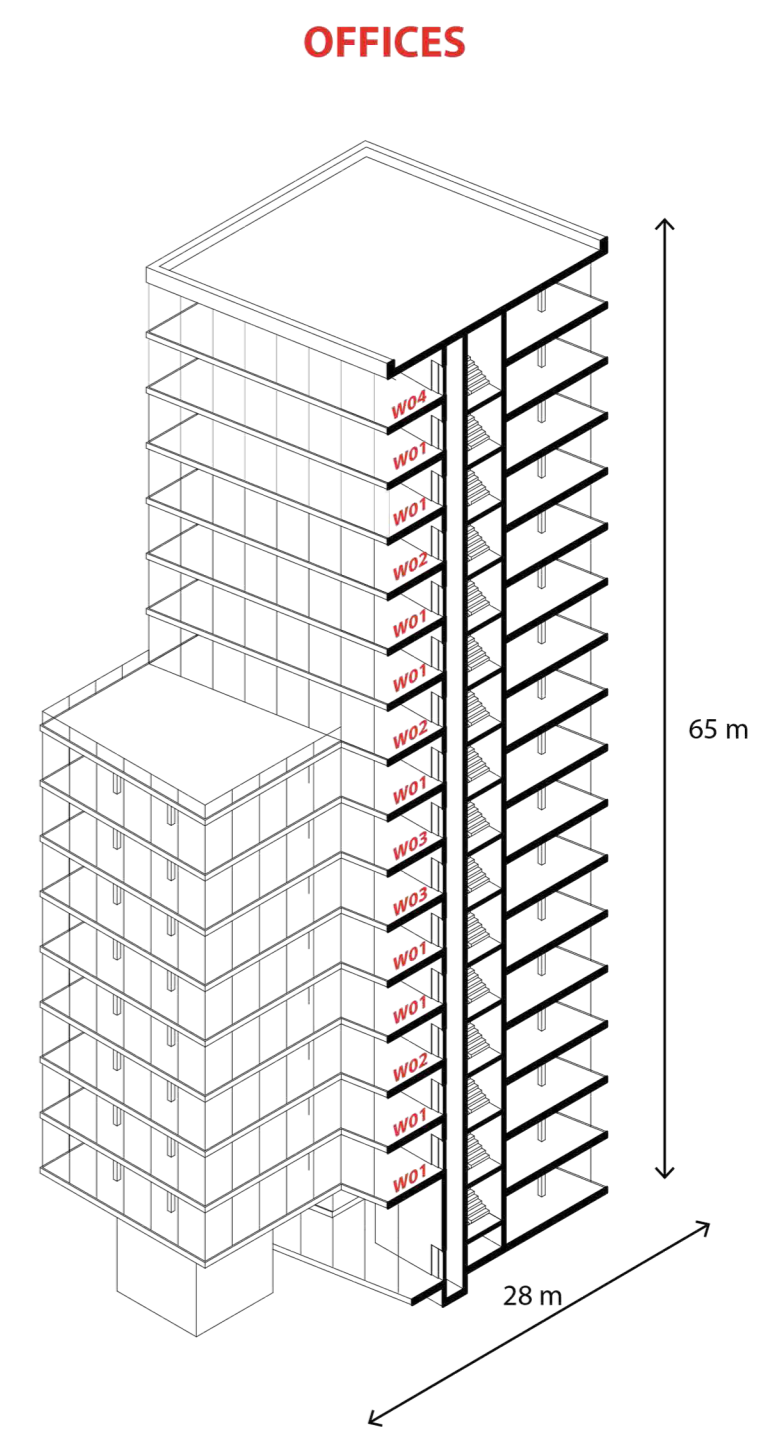


MEDIA COLLEGE



STUDENT HOUSING

RESIDENTIAL



OFFICES

- MEDIA COLLEGE**
- M01 - AUDIOTORY
 - M02 - RAMP
 - M03 - CIRCULATION
 - M04 - COMMON AND WORKING SPACE

- M05 - ENTRANCE HALL
- M06 - CLASS ROOM
- M07 - ART STUDIO
- M08 - FOTO, SOUND STUDIO
- M09 - STAFF ROOM
- M10 - LECTURE ROOM
- M11 - ADMINISTRATION
- M12 - TERRACE

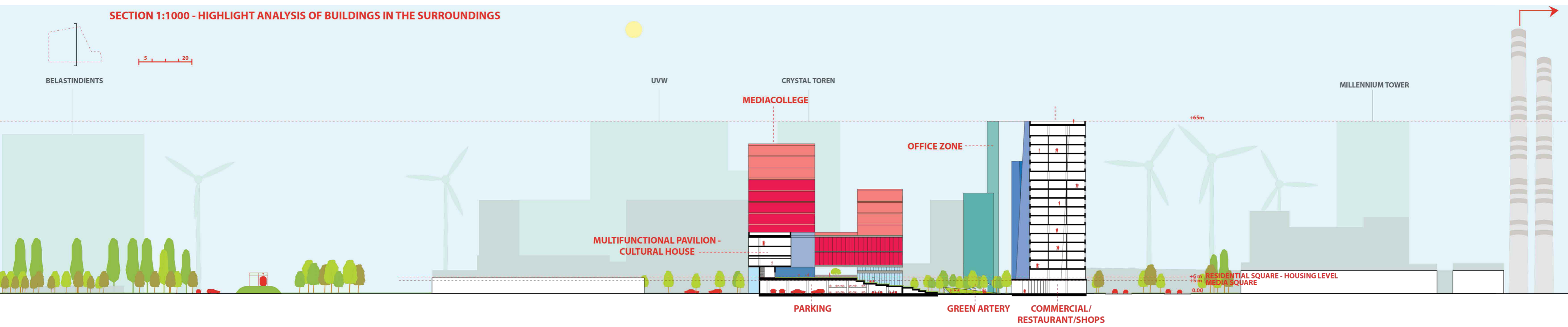
- M13 - CANTEEN
- M14 - MEDIA SQUARE
- M15 - MEDIA STAIRS
- M16 - COPY SHOP
- M17 - MULTIMEDIA LIBRARY

- STUDENT HOUSING**
- S01 - STUDENT APARTMENTS
 - S02 - STUDY ROOM
 - S03 - STUDENT SQUARE
 - S04 - LOGGIA
 - S05 - ACTIVE ROOF
 - S06 - RESTAURANT
 - S07 - COFFEE CORNER
 - S08 - SUPER MARKET
 - S09 - CIRCULATION
 - S10 - LOUNGE ROOM

- RESIDENTIAL**
- R01 - DWELING
 - R02 - CIRCULATION
 - R03 - TERRACE

- OFFICES**
- W01 - WORKING SPACE
 - W02 - CO-WORKING SPACE
 - W03 - START-UPS
 - W04 - TOP-BAR

SECTION 1:1000 - HIGHLIGHT ANALYSIS OF BUILDINGS IN THE SURROUNDINGS



BELASTINDIEN

UVW

CRYSTAL TOREN

MILLENNIUM TOWER

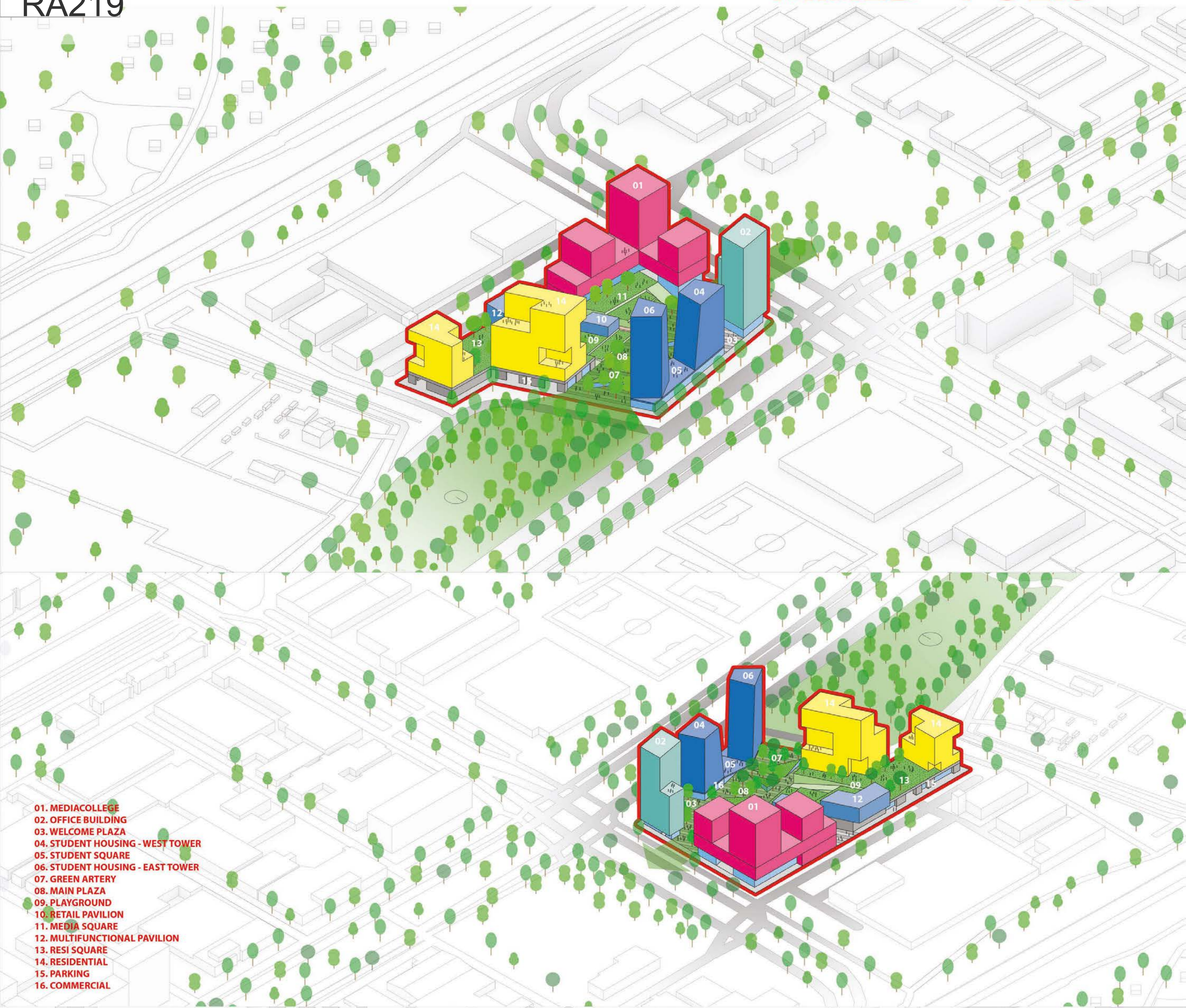
MULTIFUNCTIONAL PAVILION - CULTURAL HOUSE

PARKING

GREEN ARTERY

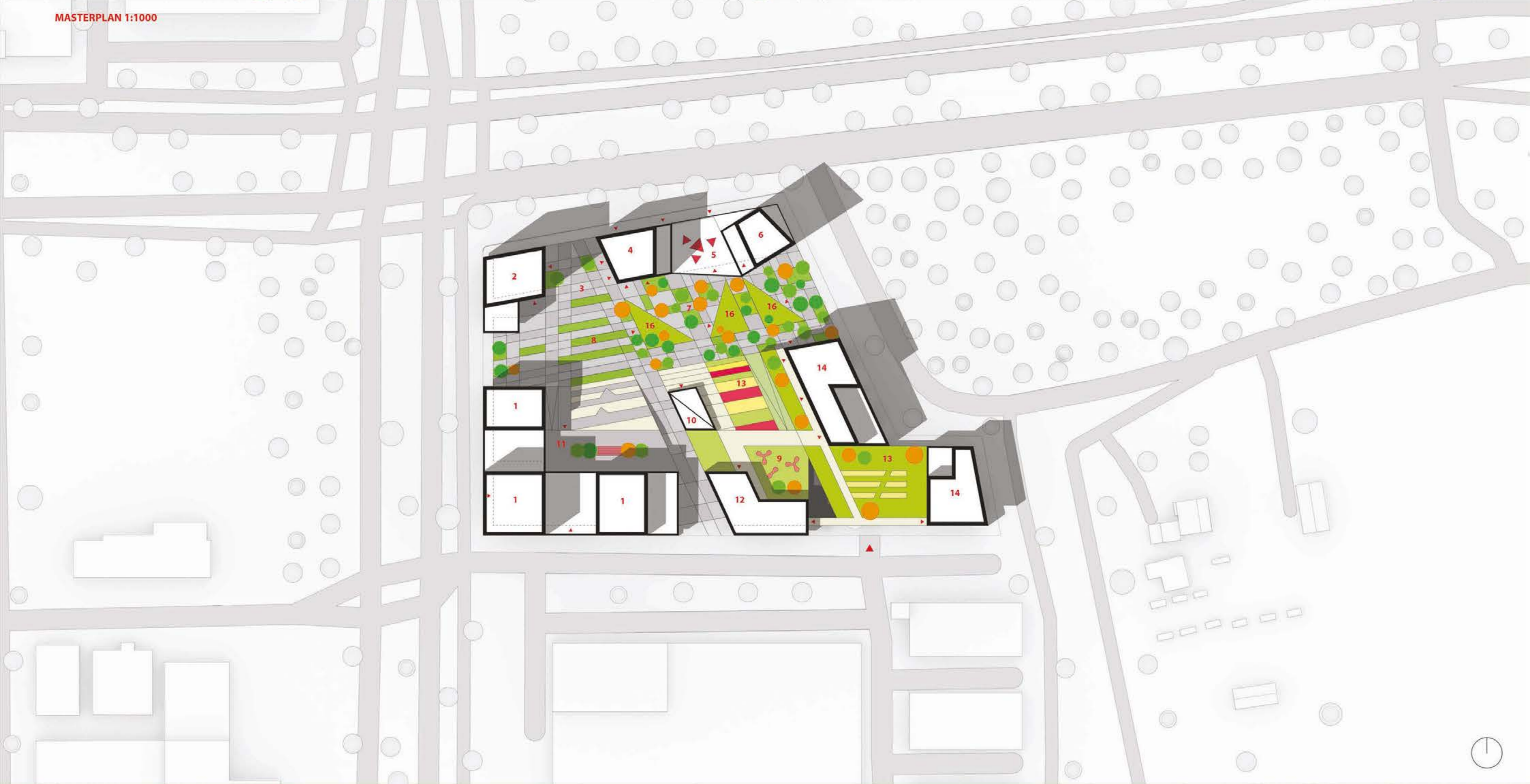
COMMERCIAL/ RESTAURANT/SHOPS

RESIDENTIAL SQUARE - HOUSING LEVEL



- 01. MEDIACOLLEGE
- 02. OFFICE BUILDING
- 03. WELCOME PLAZA
- 04. STUDENT HOUSING - WEST TOWER
- 05. STUDENT SQUARE
- 06. STUDENT HOUSING - EAST TOWER
- 07. GREEN ARTERY
- 08. MAIN PLAZA
- 09. PLAYGROUND
- 10. RETAIL PAVILION
- 11. MEDIA SQUARE
- 12. MULTIFUNCTIONAL PAVILION
- 13. RESI SQUARE
- 14. RESIDENTIAL
- 15. PARKING
- 16. COMMERCIAL

MASTERPLAN 1:1000





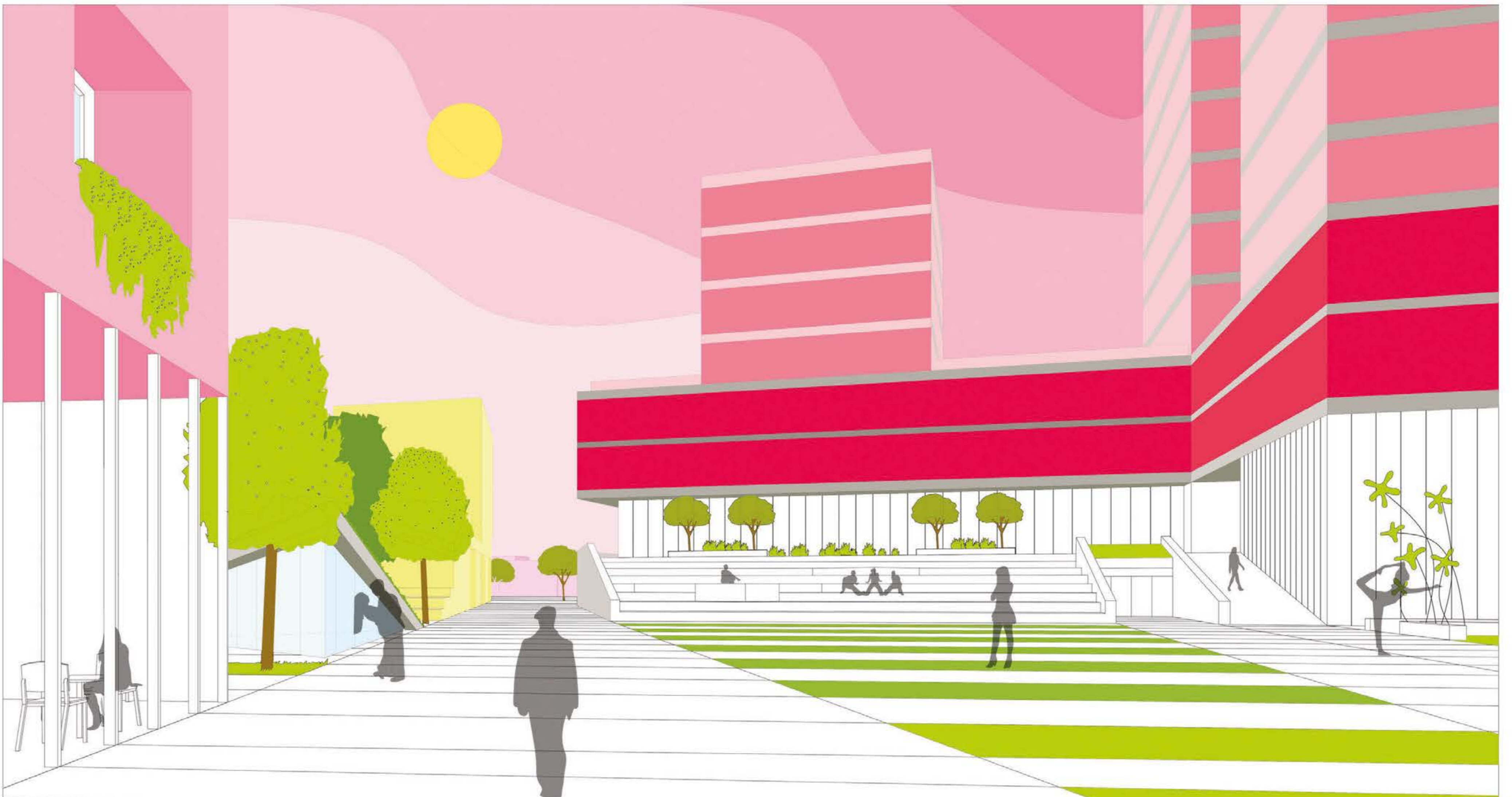
ARTIST IMPRESSION 01: VIEW FROM DRONE BETWEEN TOWER OF HOUSING BUILDING AND STUDENT ACCOMODATION TO THE BUILDING OF MEDIACOLLEGE , OFFICE AND MAIN PLAZA WITH GREEN ARTERY.



ARTIST IMPRESSION 02: VIEW FROM SQUARE BETWEEN MEDIACOLLEGE AND OFFICE BUILDING ON TOWER OF RESIDENTIAL, STUDENT ACCOMODATION AND GREEN ARTERY.



ARTIST IMPRESSION 03: VIEW FROM RESIDENTIAL SQUARE ON TOWERS OF STUDENTS AND WORKING ZONE.



ARTIST IMPRESSION 04: VIEW FROM WELCOME PLAZA TO MEDIACOLLEGE AND COMMERCIAL PAVILIONS