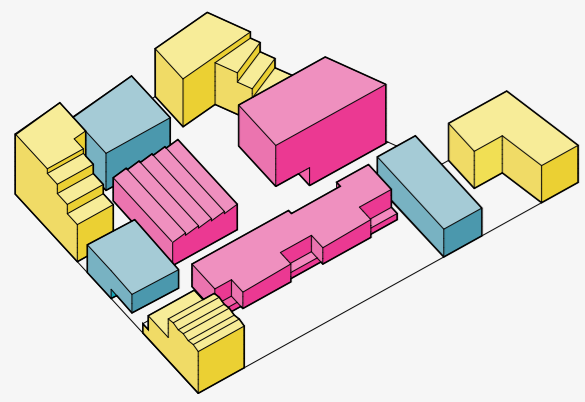
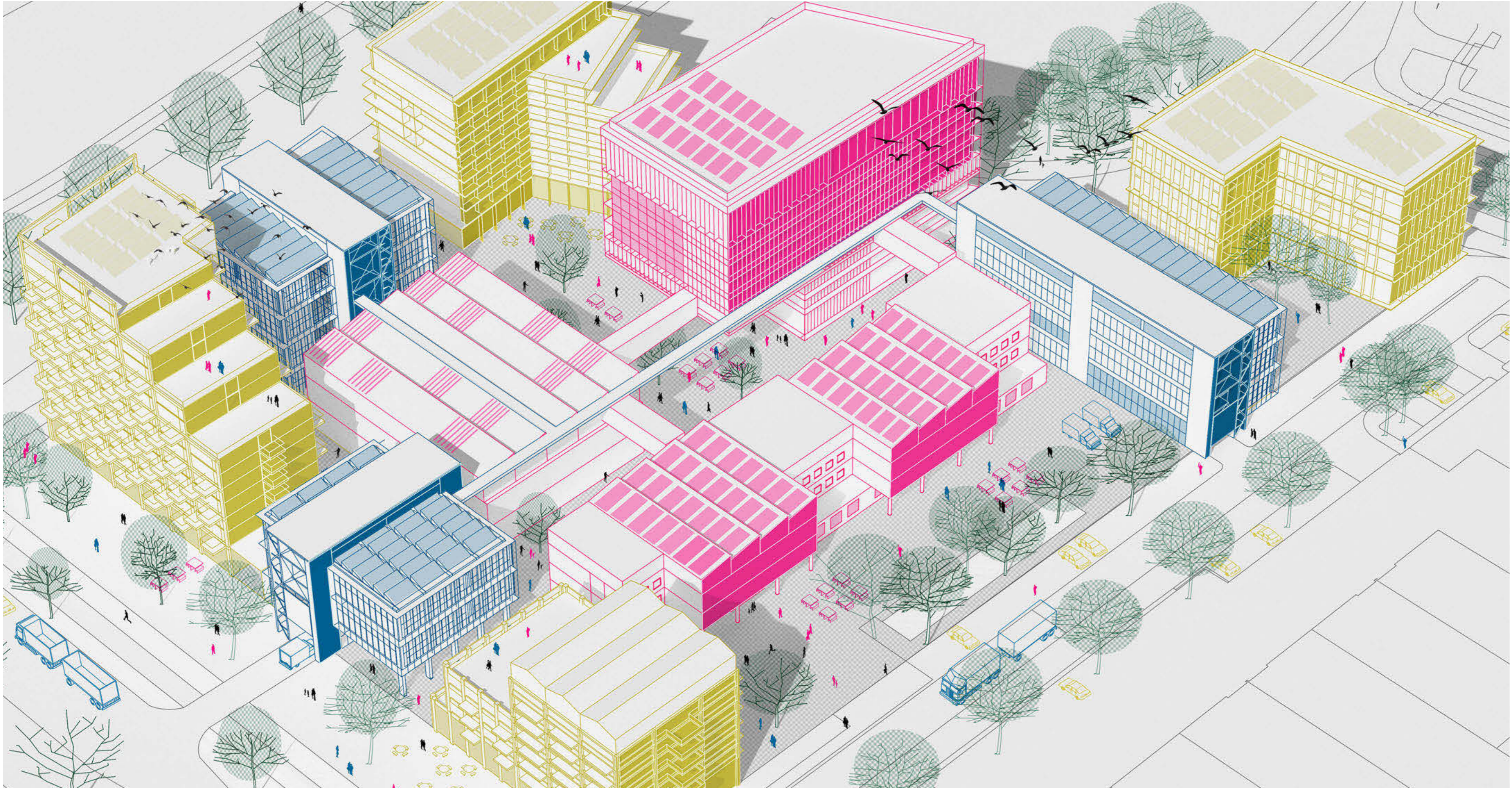
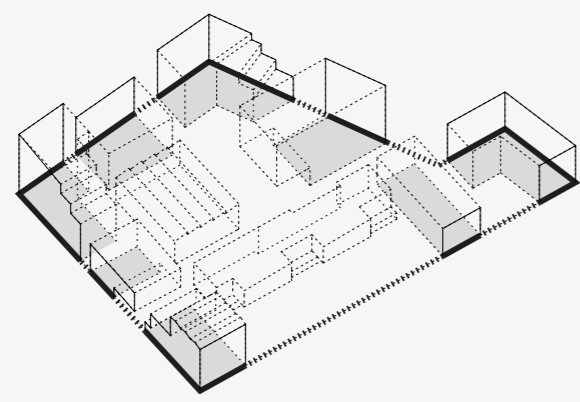


GN658 Haven Stad Blok 1

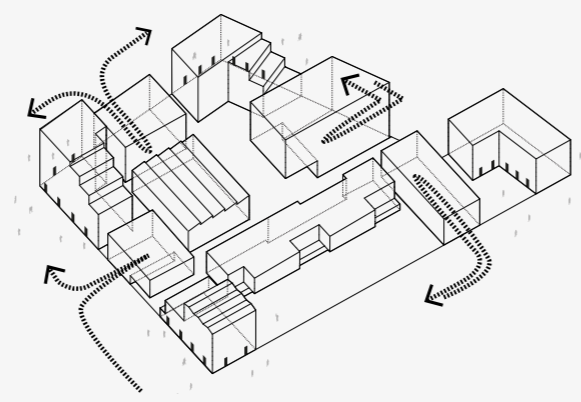
Amsterdam Transformatorweg



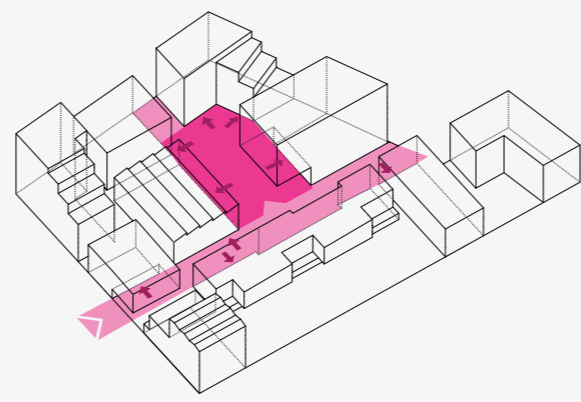
DETACHED BLOCKS
flexible urban model to settle with all phasing, demarcation and nuisance issues



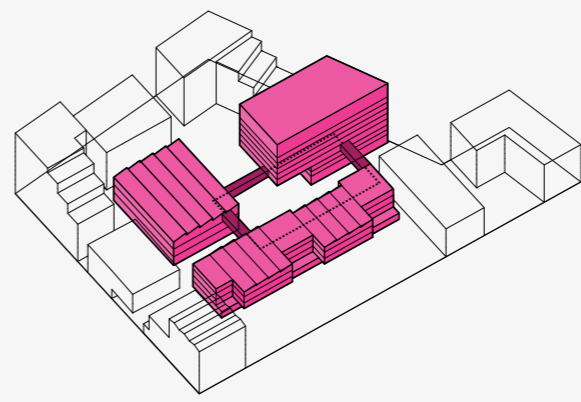
MARKING URBAN PLOT LINES
dynamic urbanism but with clear and coherent urban blocks, streets



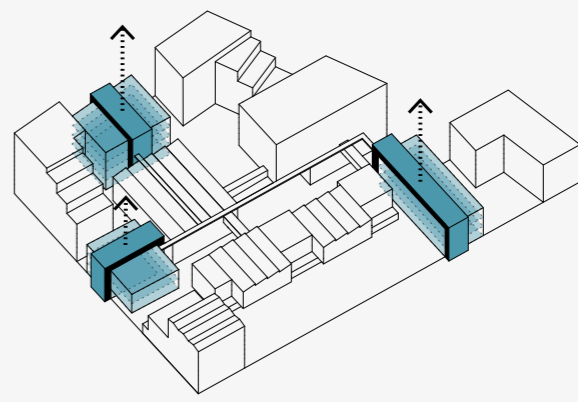
ROUTING FROM OUTSIDE
each function (building) has its own connection / entrance to the street



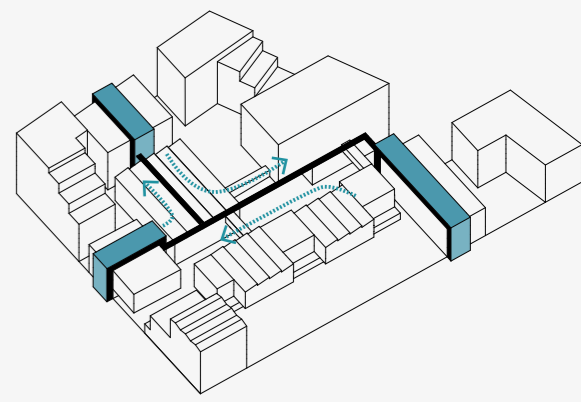
CITY LIFE IS STREET LIFE
entrance doors on street level, network of public innerstreets and -squares



MEDIA CAMPUS
three separate but connected buildings situated around the inner square



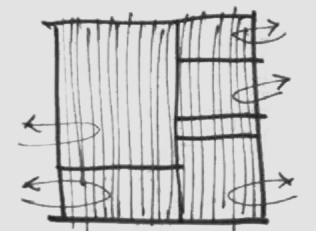
VERTICAL URBAN FACTORIES
vertical production typology to acquire high density and close proximity with a.o. housing



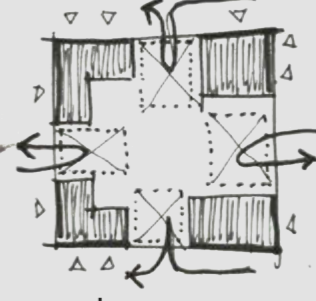
CIRCULAR ECONOMY
exchange of energy, products, etc. made physical and visible in the plan



INCLUSIVE CITY
An inclusive city is a city where brains and hands work in close proximity. The city's chain of production will be constantly changing and productive businesses will keep on specializing. Future urban factories have cleaner production methods, are smaller because of just-in-time manufacturing and are vertical organized, resulting in a potential engine of urban revitalization.



current



concept



future

SLOTTERDIJK I
A monotonous, non accessible urban fabric represented by a flat and closed production typology. This current typology requires a lot of circulation space, is very introvert and results in deserted streets. To accommodate a gradual shift from a monofunctional to a lively mixed district an urban model is needed that enables phased relocation of the existing typology. A model that includes small-scaledness, accessibility and open, extrovert plinths without losing its productive character.

HAVEN STAD BLOK 1
Haven Stad Blok 1 is based on a hybrid urban model: we set simple rules (marking the outer plotlines, integrating an inner square and opening up the block) that allow for different typologies and uses to cooperate on one plot. We oppose the superblock (problems regarding relocation, nuisance, phasing etc.) and combine this set of rules with a -new- production typology: Pakhuis. Because of the required high density, Pakhuis is integrated as a vertical 'factory' in between the housing blocks. Each function has its own connection to the street and contributes to a lively neighbourhood where various functions meet.



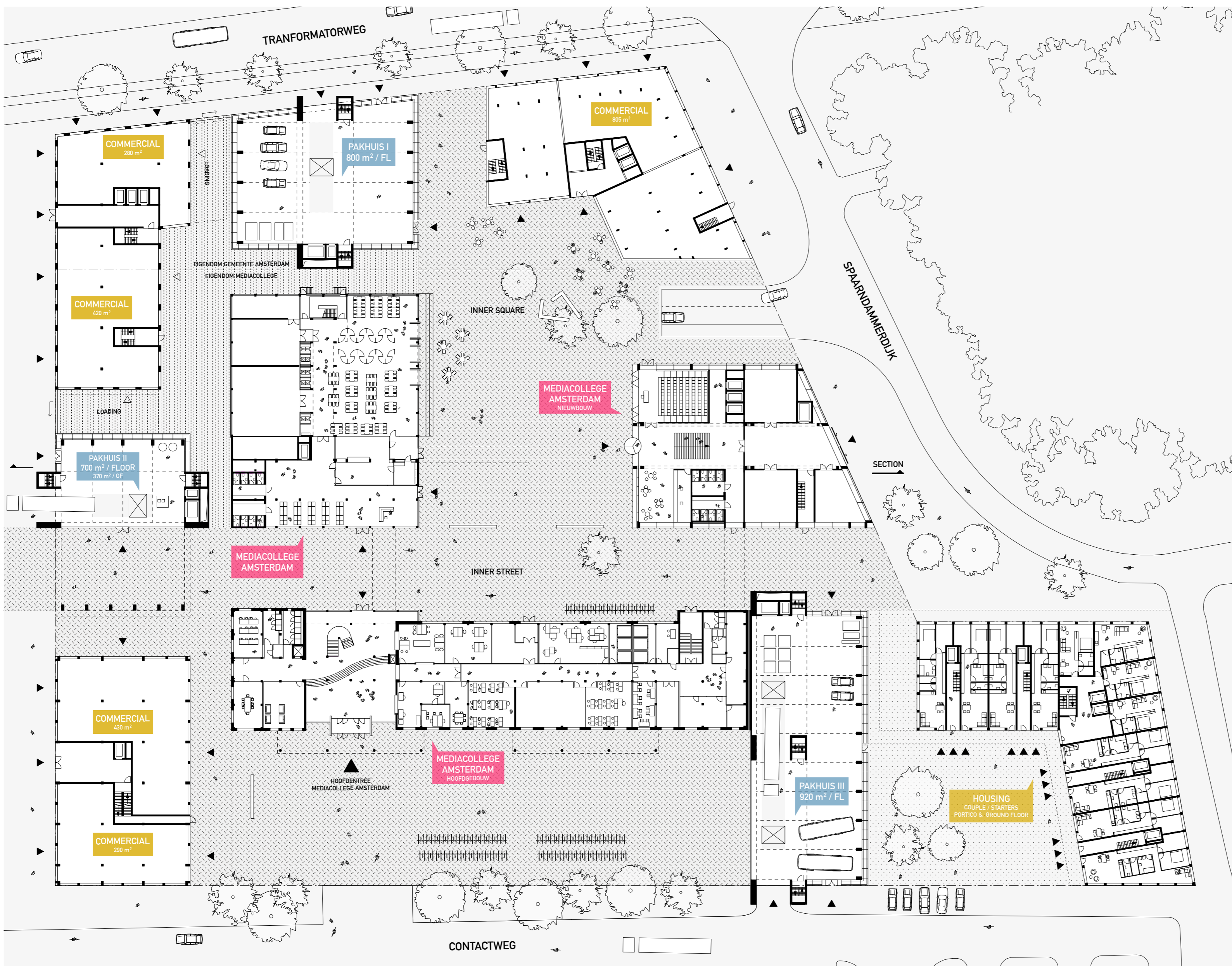
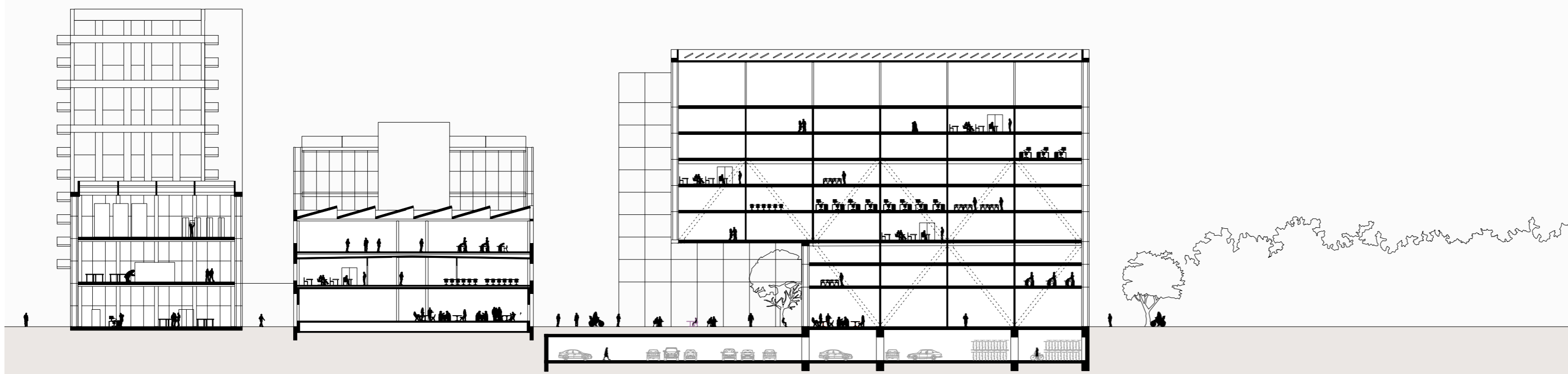
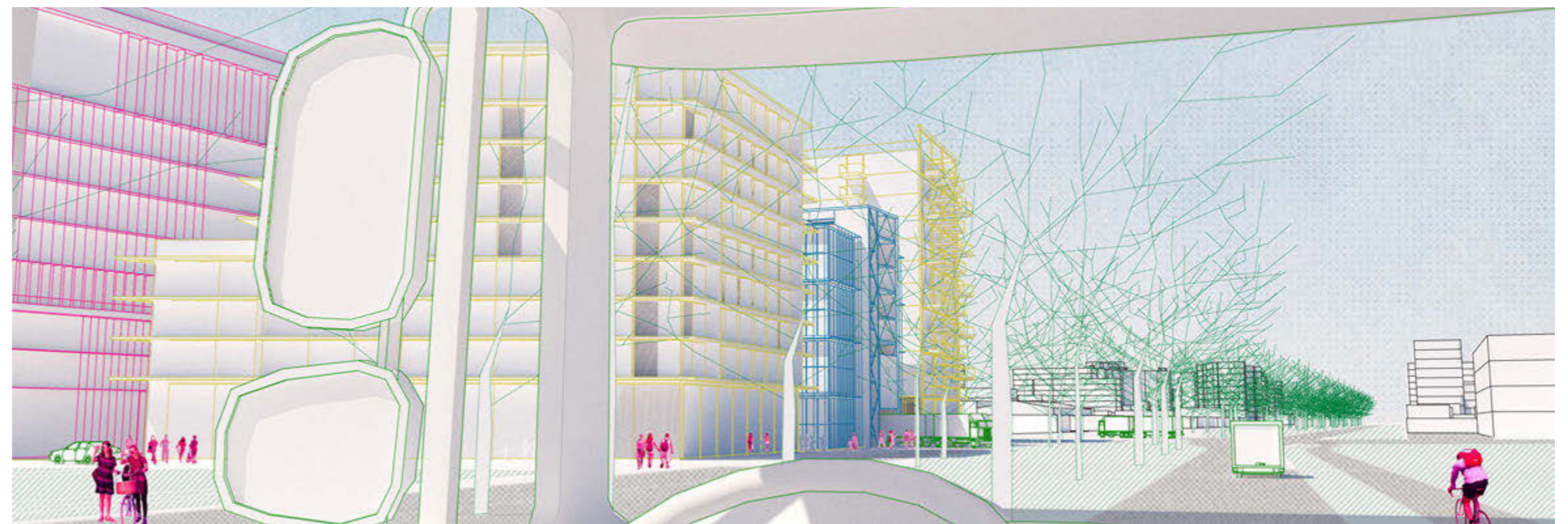
TYPOLGY: PAKHUIS
In the desired mix for Haven Stad we believe production should be experienced. Highly transparent volumes allow residents to get involved in the production process: consumption of production. Based on the old Amsterdam warehouses, the Pakhuis has its vertical transport on the visible outside creating big open floors on the inside. With a floor height of 6m and the possibility to open up floors, any given production business can be accommodated.



MEDIACAMPUS
The Media College has a specific program that can easily be integrated in the urban model. By relocating several functions to the high new extension at the Spaarndammerdijk, the Mediacollege becomes a campus around the inner square. Interaction with the residents and production units is stimulated through the inner street and square. With a direct connection to Pakhuis III the alumni are stimulated to live and work on the plot and use its facilities when starting their own business.

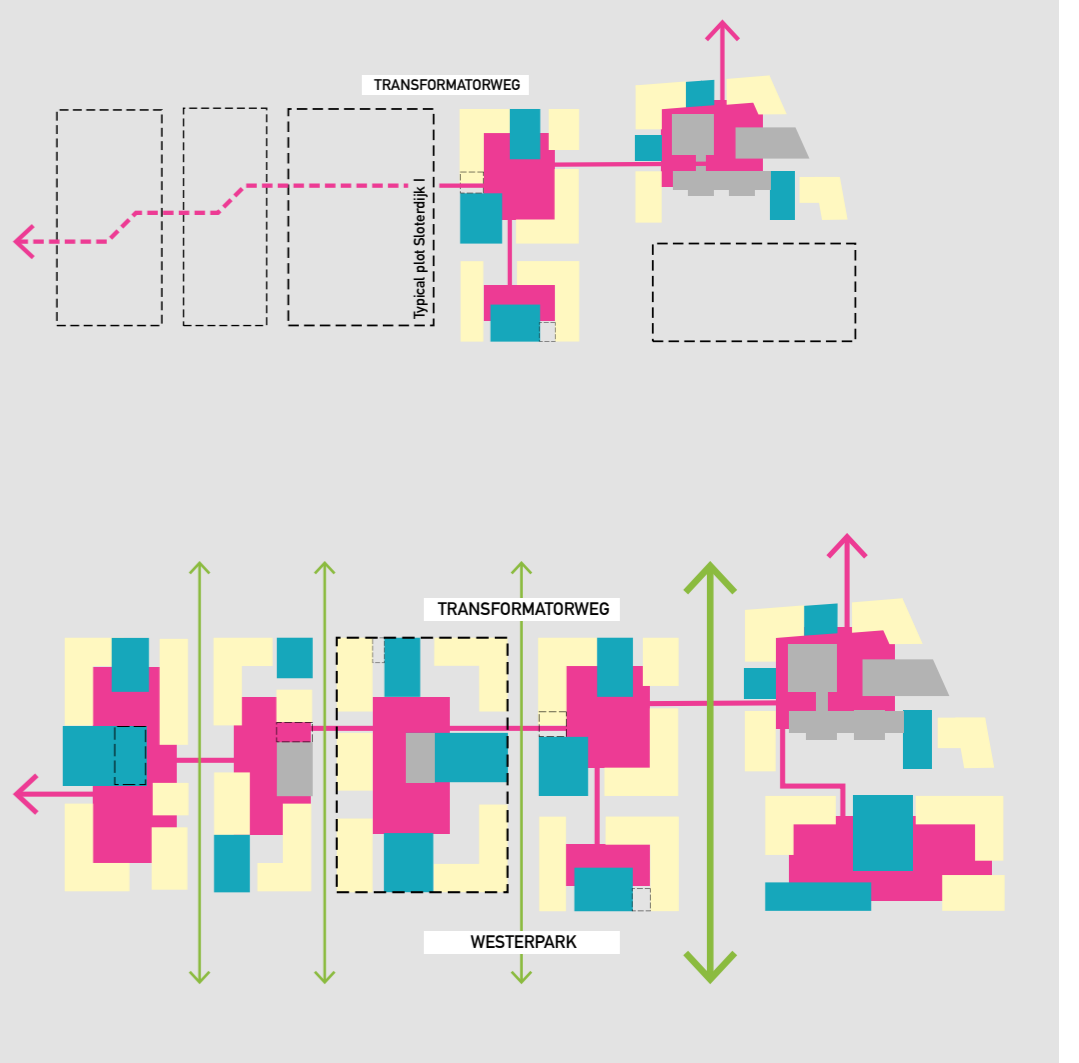
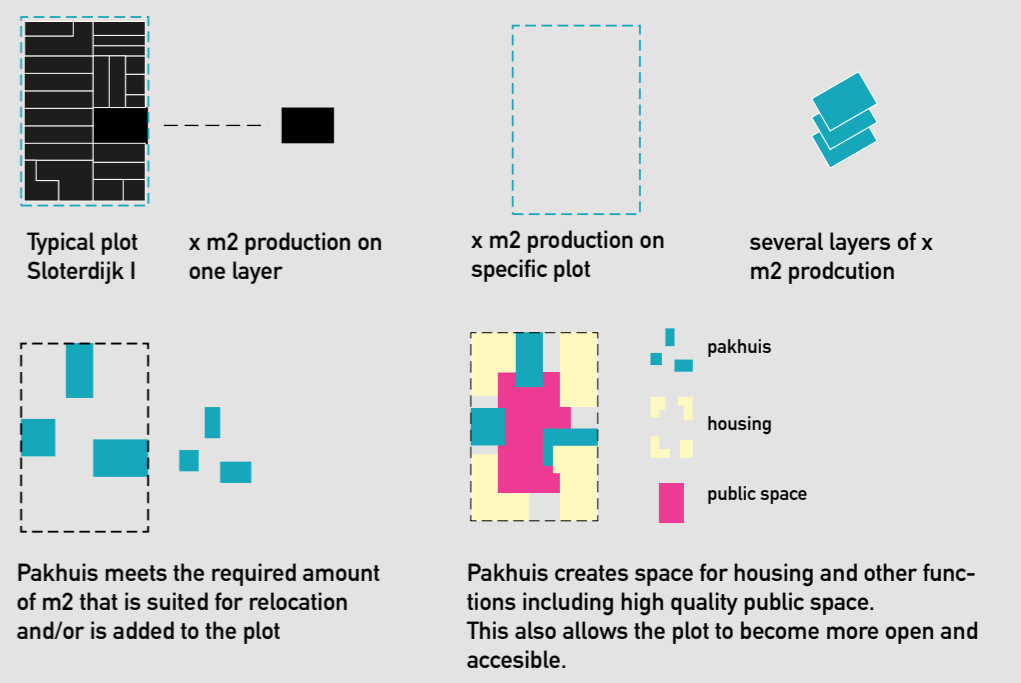
GN658 Haven Stad Blok 1

Amsterdam Transformatorweg



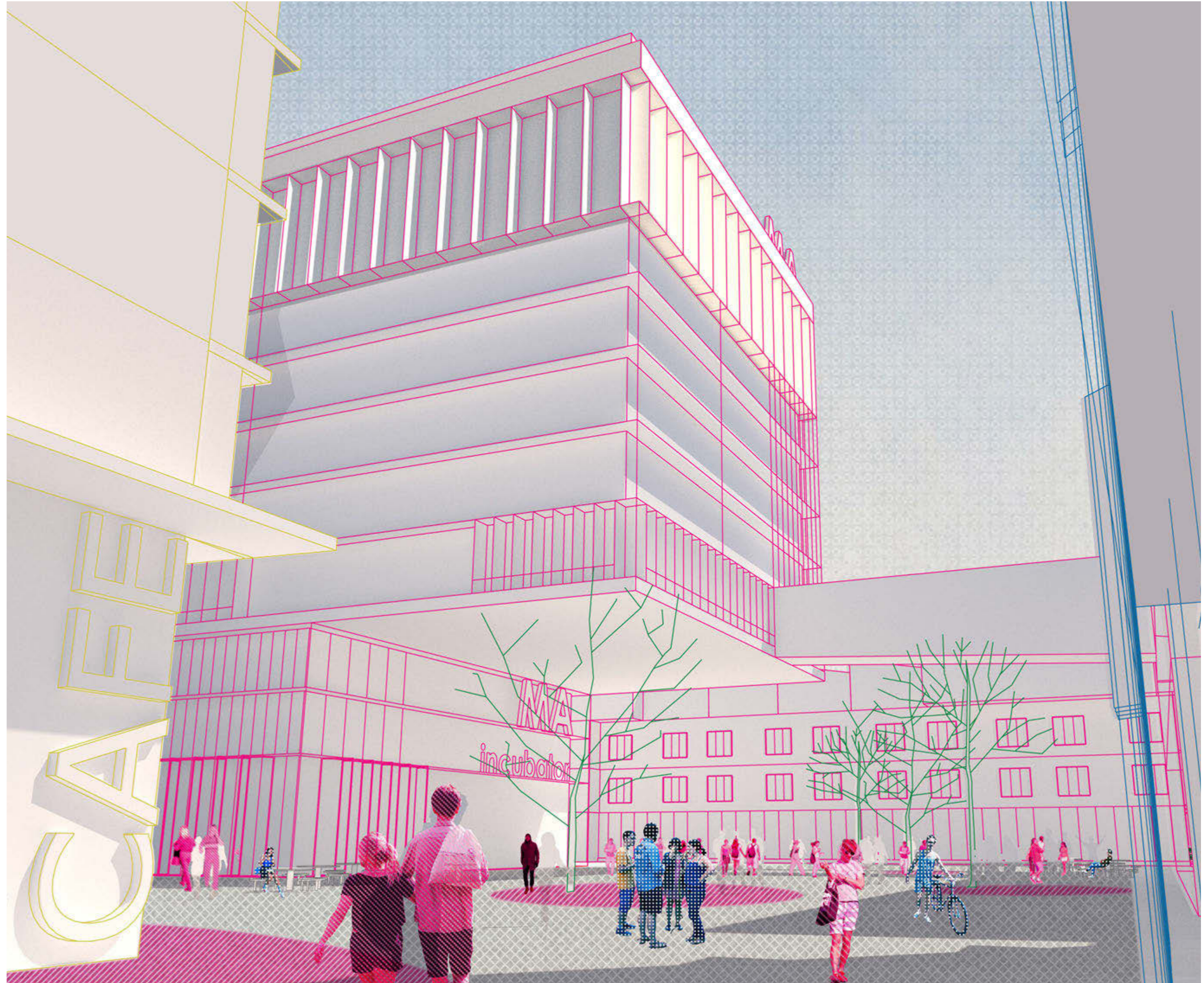
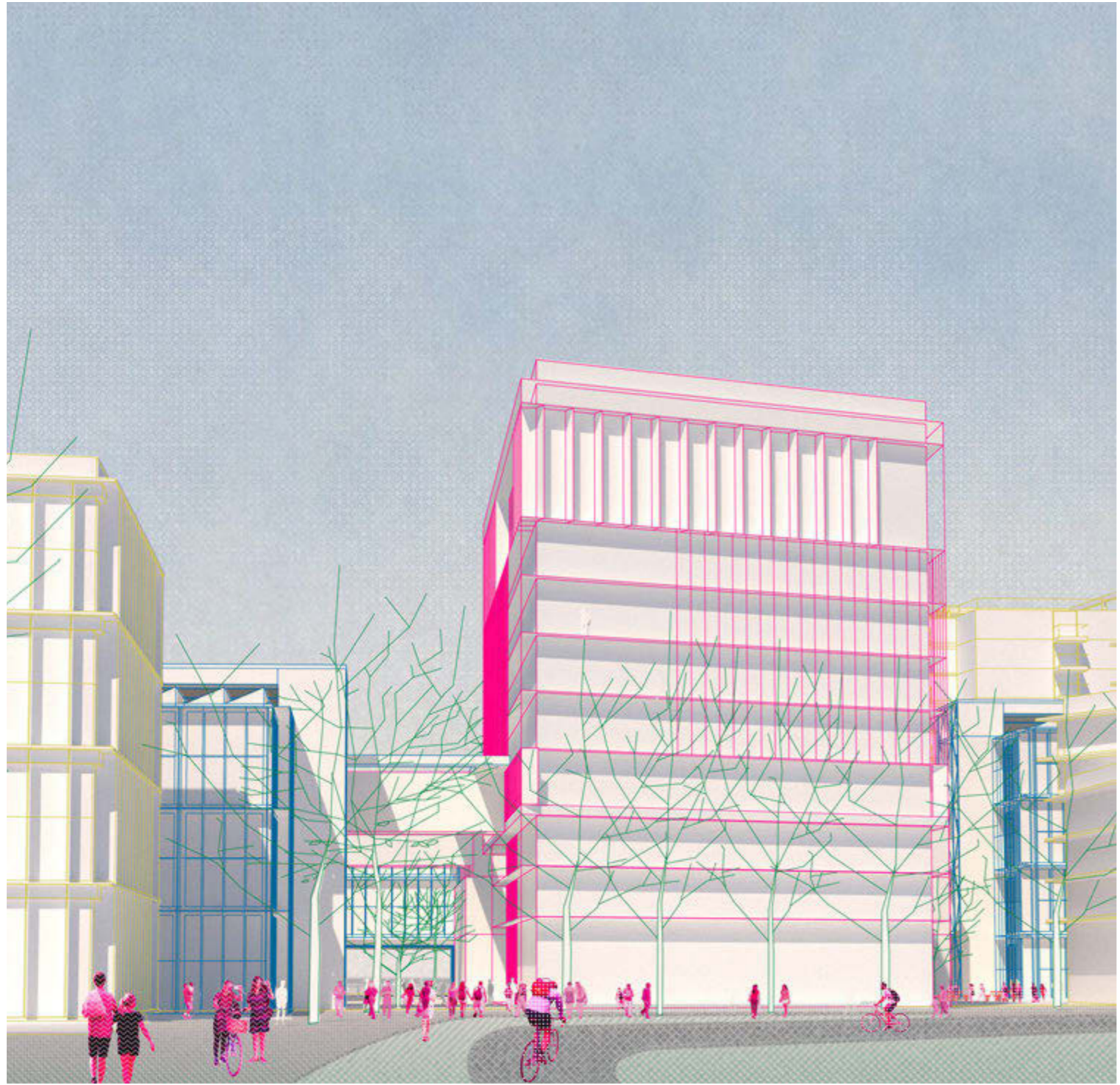
FUTURE DEVELOPMENT

Through our hybrid urban model Sloterdijk I can gradually transform into a diverse and lively network of accessible mixed use blocks. The monotonous, non-accessible and introverted character of the current blocks will be replaced by permeable, diversely programmed and extroverted plots defining Haven Stad. An informal route in between the blocks is a key element of the new urban fabric. Furthermore, different degrees of connections in between the blocks and throughout Haven Stad will be made to embed Haven Stad in its context.



GN658 Haven Stad Blok 1

Amsterdam Transformatorweg



MEDIACOLLEGE AMSTERDAM

MEDIA CAMPUS SITUATED AROUND INNER SQUARE

LARGE FUNCTIONS RENOVATION + EXTENSION
4.550 m²

- CANTEN
- LIBRARY
- STUDIO'S L
- COFFEE CORNER
- PRESENTATION ROOMS

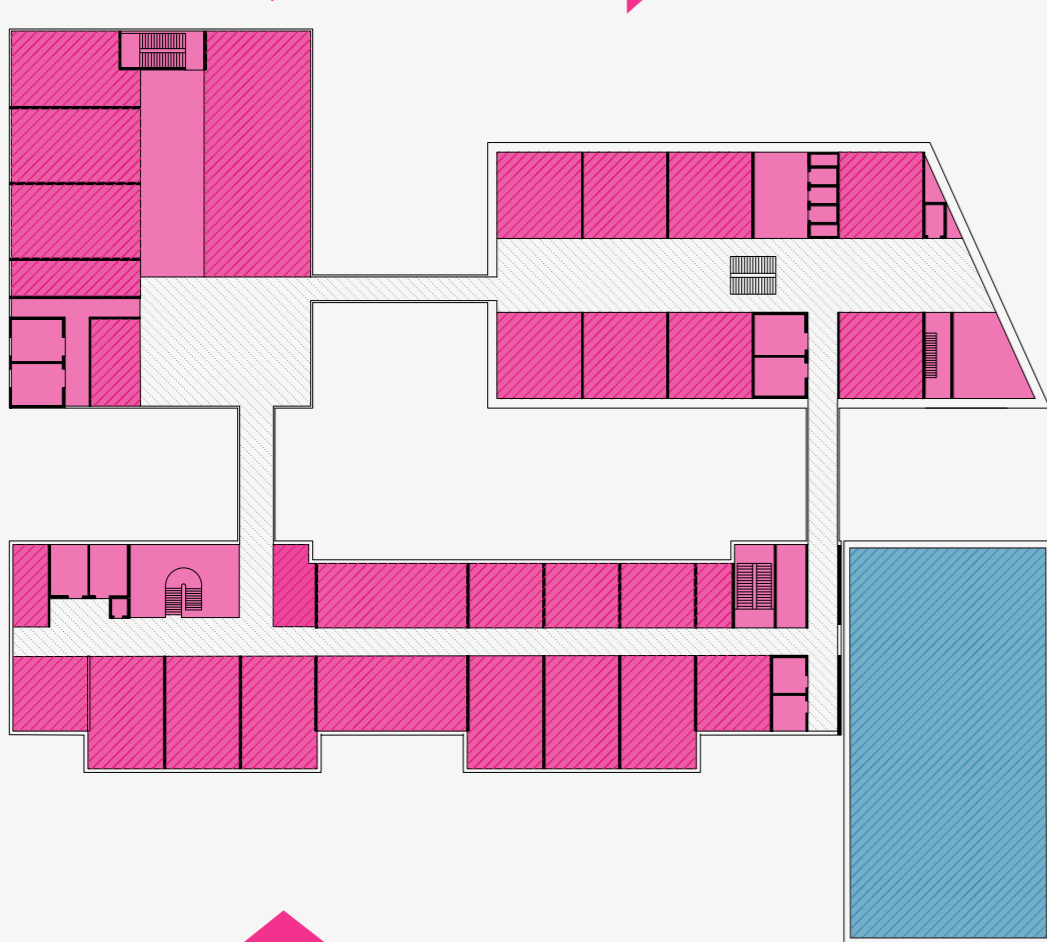
EXTENSION NEW BUILDING
11.800 m²

- AUDITORIUM
- TEACHERS DEPARTMENT
- CLASS ROOMS M + L
- STUDIO'S XL
- CONFERENCE ROOM

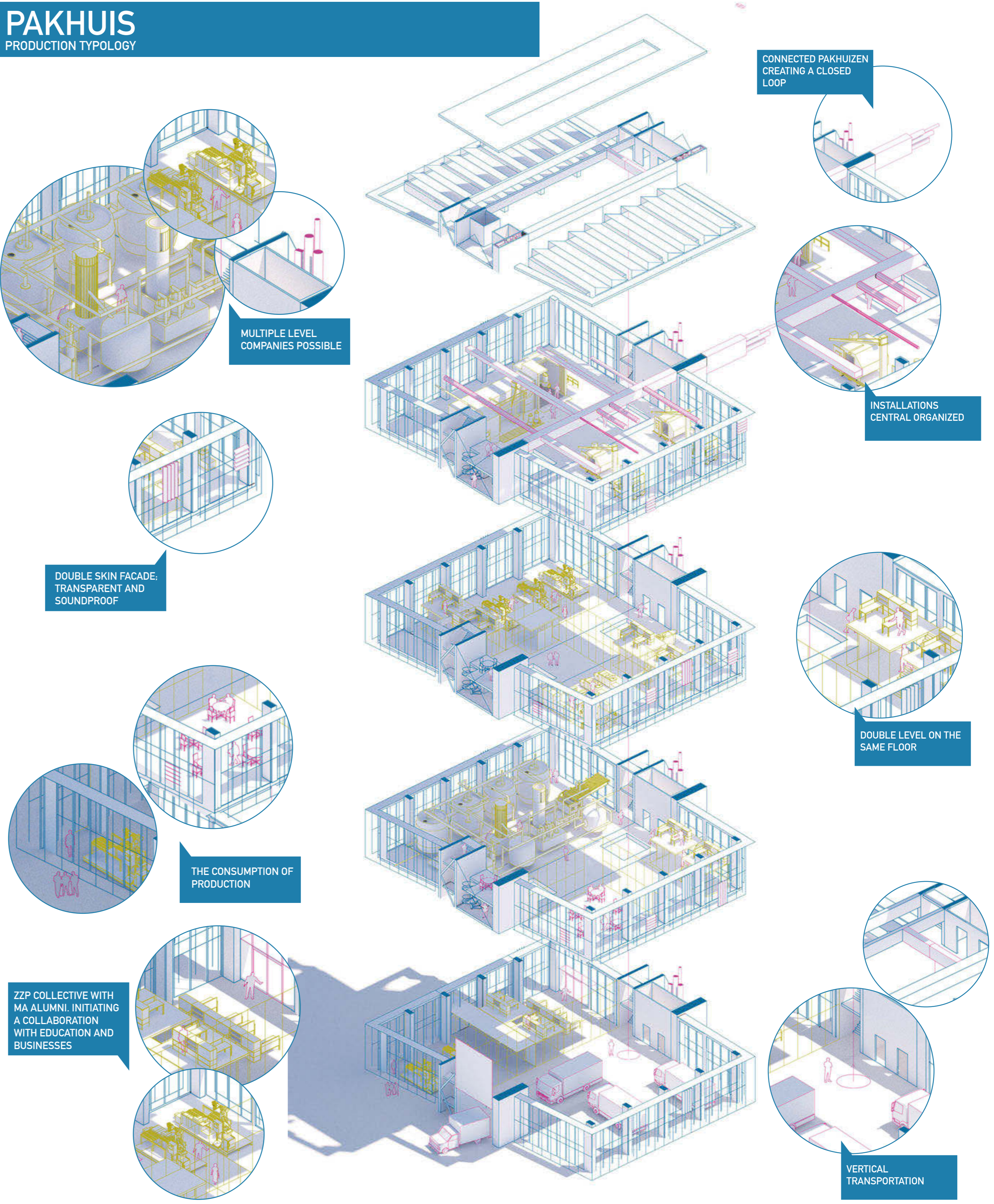
MAIN BUILDING RENOVATION + EXTENSION
7.100 m²

- MAIN ENTRANCE
- ADMINISTRATION
- CLASS ROOMS S + M

PAKHUIS III WORKPLACE ALUMNI
DIRECT CONNECTION WITH MA COLLEGE

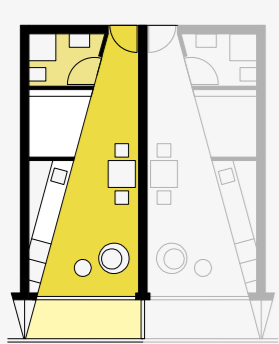


PAKHUIS PRODUCTION TYPOLOGY

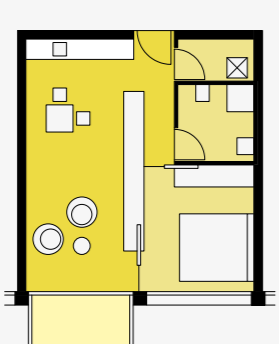


HOUSING

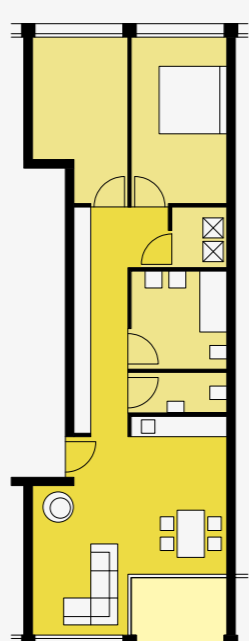
THREE TYPOLOGIES



STUDENT
24 m² NFA



STARTER
50 m² NFA



COUPLE
83 m² NFA