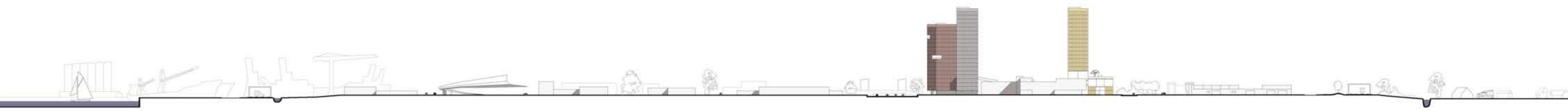


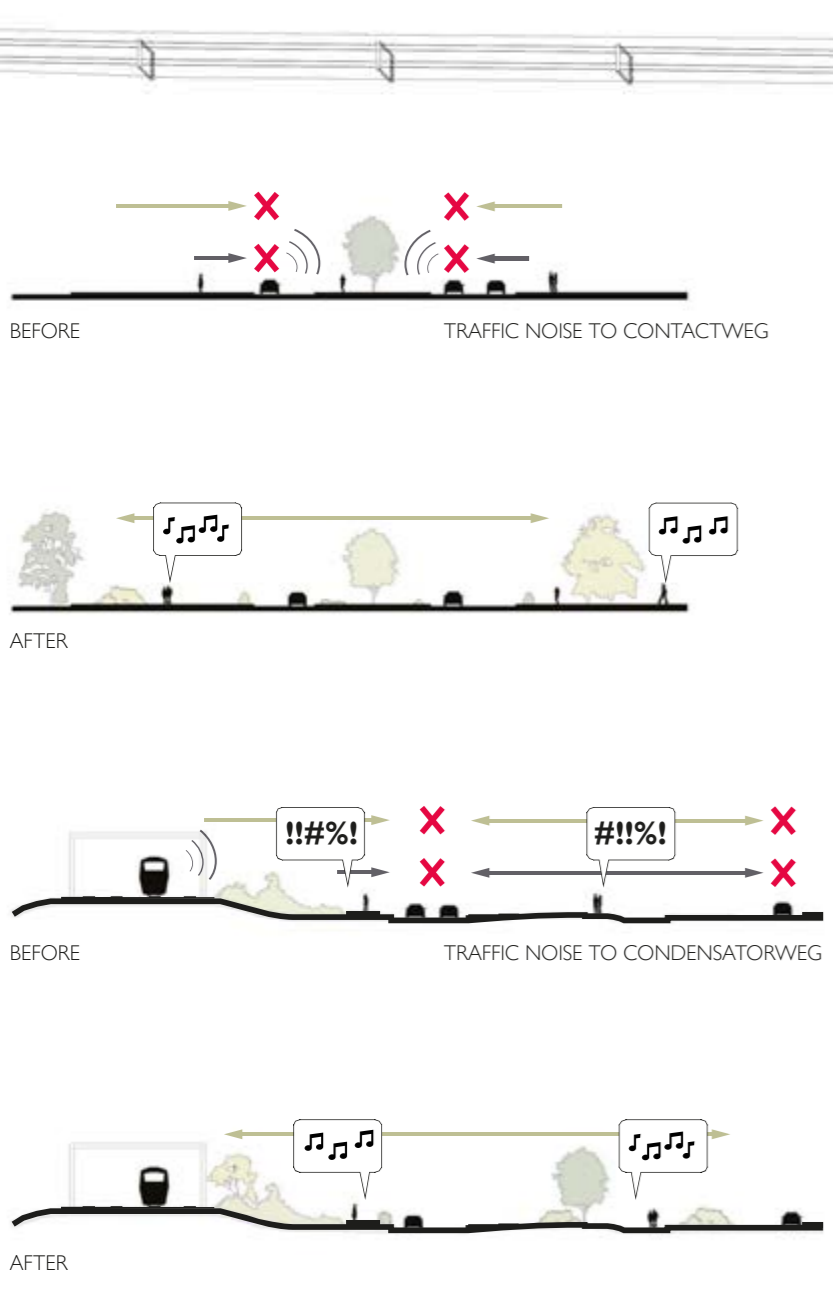
- 1 MA SECONDARY FACILITY
- 2 SLOTERDIJK STATION
- 3 METROSTATION TRANSFORMATORWEG
- 4 THEATER AMSTERDAM
- 5 HARBOR
- 6 TUINPARK NUT & GENOEGEN
- 7 WESTERPARK
- 8 SPAARDAMMERBUURT
- EXISTING TREES
- NEW TREES

LONGITUDINAL SECTION 1:2000



CROSS SECTION 1:2000

THE PURPOSE OF "LINEAR PROJECT" IS TO REDUCED THE NEGATIVE IMPACT OF TRAFFIC NOISE AND POLLUTION, IMPLEMENTING PEDESTRIAN AND BICYCLE PATHS AND CREATE A SPOT OF GREEN ZONES.

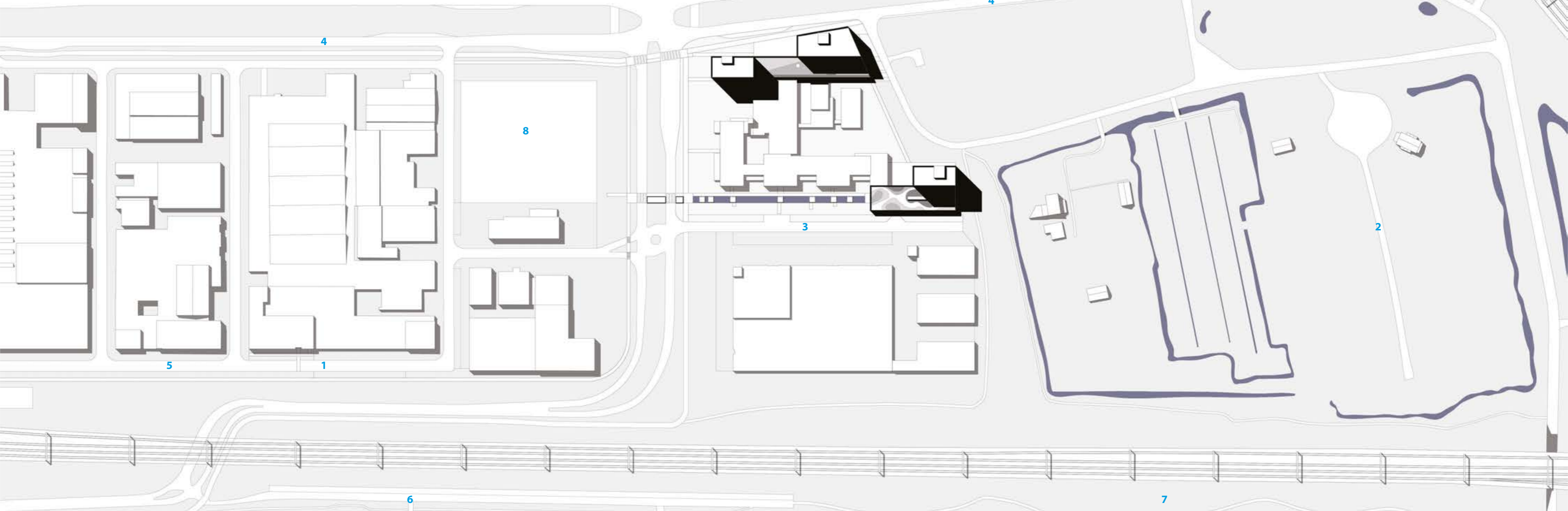


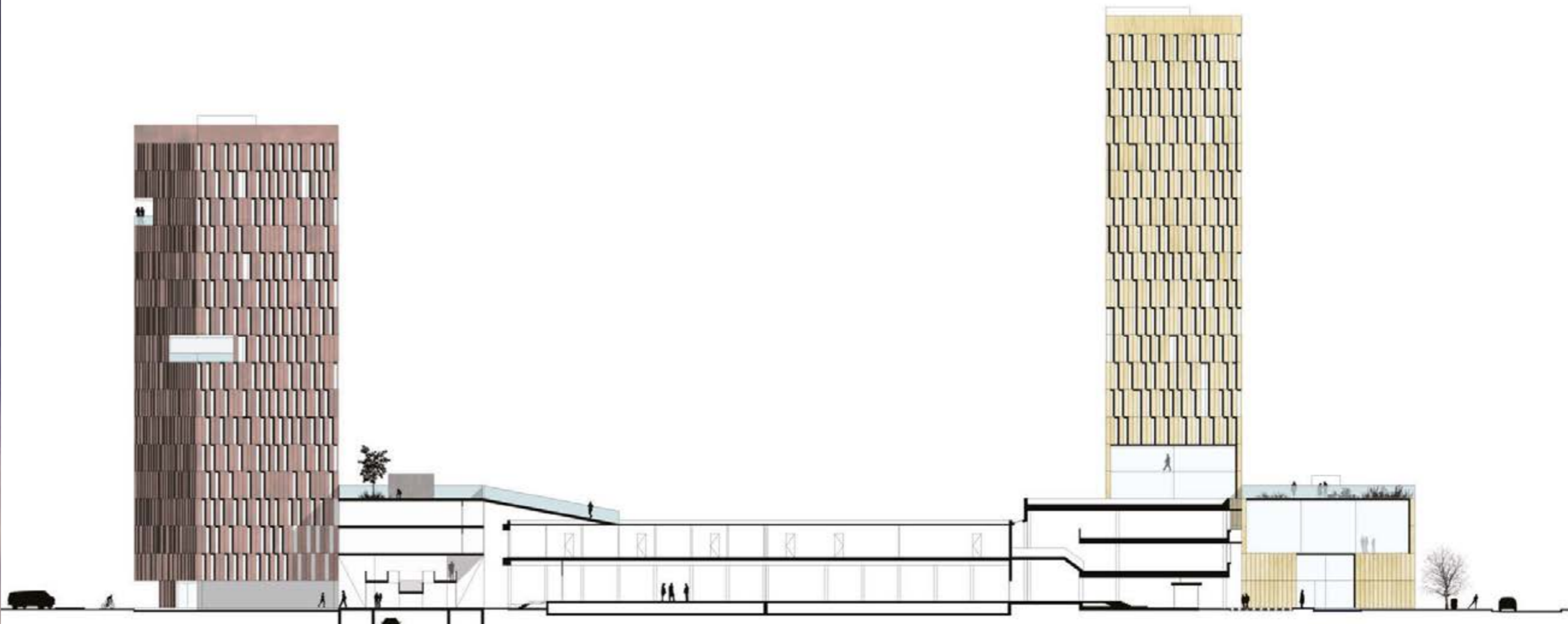
THE PROJECT SITE OF "TRANSFORMATORWEG" IS A PERI-URBAN AREA BETWEEN THE HISTORIC CENTER OF AMSTERDAM AND HIS OUTSKIRT. THE POINTS TO BE SOLVED IN THIS AREA WERE THOSE OF CONNECTING NEW DEVELOPMENTS WITH EACH OTHER EVEN WITH DIFFERENT DESTINATIONS OF USE (RESIDENTIAL, COMMERCIAL, PRODUCTIVE), WITHOUT AFFECTING THE EXISTING VOLUME OF THE MEDIACOLLEGE. THE DENSITY OF THE BUILT ENVIRONMENT ON OUR PROJECT AREA HAS OBLIGED US TO DESIGN VERTICALLY ON THE RESIDUAL AVAILABLE SPACE. A FIRST BUILDING STRETCHES PARALLEL TO THE MAIN ROAD CONTAINING ALL THE SPACES REQUIRED FOR COMMERCIAL AND PRODUCTIVE PURPOSES AND ELEVATES WITH TWO TOWERS (BLACK TOWER AND RED TOWER) CONTAINING THE RESIDENTIAL QUARTERS.

IN THE SOUTH OF THE AREA, SIMILARLY A "LOW" BUILDING CONTAINS THE EXTENSION OF THE MEDIACOLLEGE AND THEN RISES INTO THE YELLOW TOWER CONTAINING THE STUDENT RESIDENCES. ALL THE PROPOSED NEW DEVELOPMENTS DO NOT LINK WITH THE MEDIACOLLEGE, EXCEPT BY CONNECTING PARTIALLY TO THE SOUTH-EAST END OF THE SCHOOL TO DEVELOP THE EXTENSION, AND TO THE NORTH SIDE TO MAKE POSSIBLE TO ACCESS TO THE COLLEGE FROM AN OPEN SPACE ON THE GROUND FLOOR WHERE COMMERCIAL AND PRODUCTIVE PORTIONS ARE LOCATED. THE PARTS WHERE THE NEW BLOCKS COME INTO CONTACT WITH THE SCHOOL DO NOT EXCEED THE HEIGHT OF THE EXISTING BUILDING AND THEIR ROOF GARDENS ARE DESIGNED AS LEISURE SPACES FOR THE ENJOYMENT OF THE RESIDENTS, WORKERS AND STUDENTS OF THE NEW STRUCTURES, EXTENDING EVEN AT DIFFERENT TIMES THE ROOF OF THE SCHOOL.

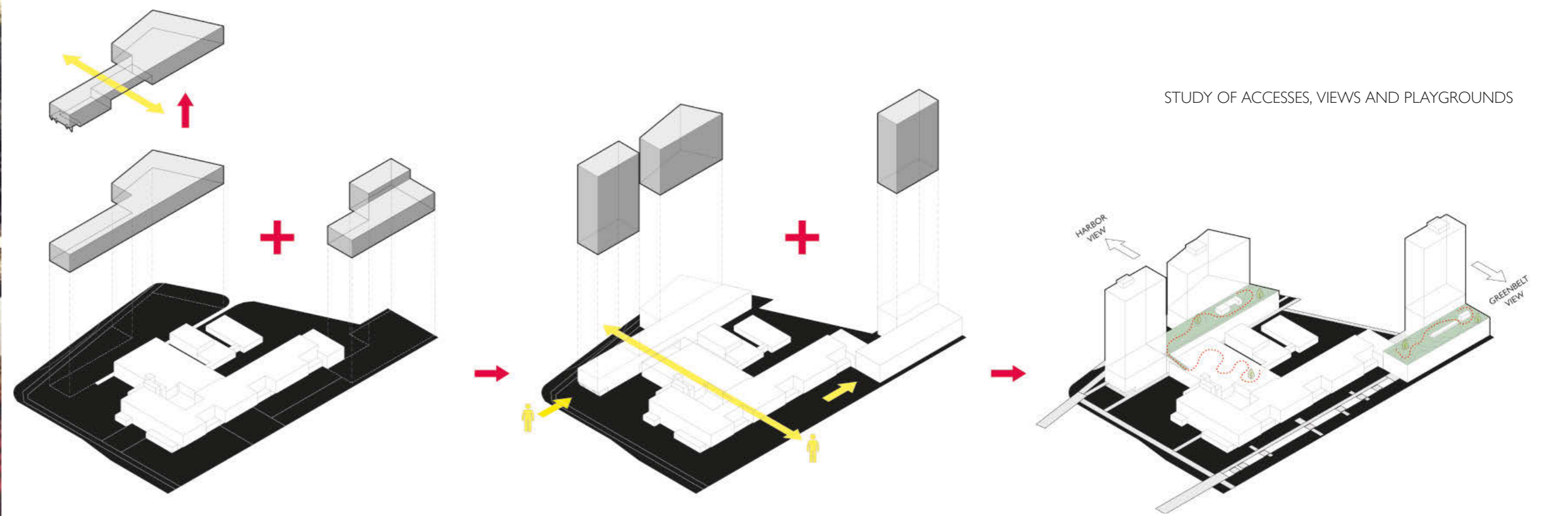
- 1 MA SECONDARY FACILITY
- 2 BEGRAAPPLAATS ST BARBARA
- 3 CONTACTWEG
- 4 TRANSFORMATORWEG
- 5 CONDENSATORWEG
- 6 TUINPARK NUT & GENOEGEN
- 7 WESTERPARK
- 8 STADSPODIUM

MASTERPLAN 1:2000  
0m 10m 20m 50m 100m





SECTION A-A SCALE 1:350  
0m 5m 10m 20m

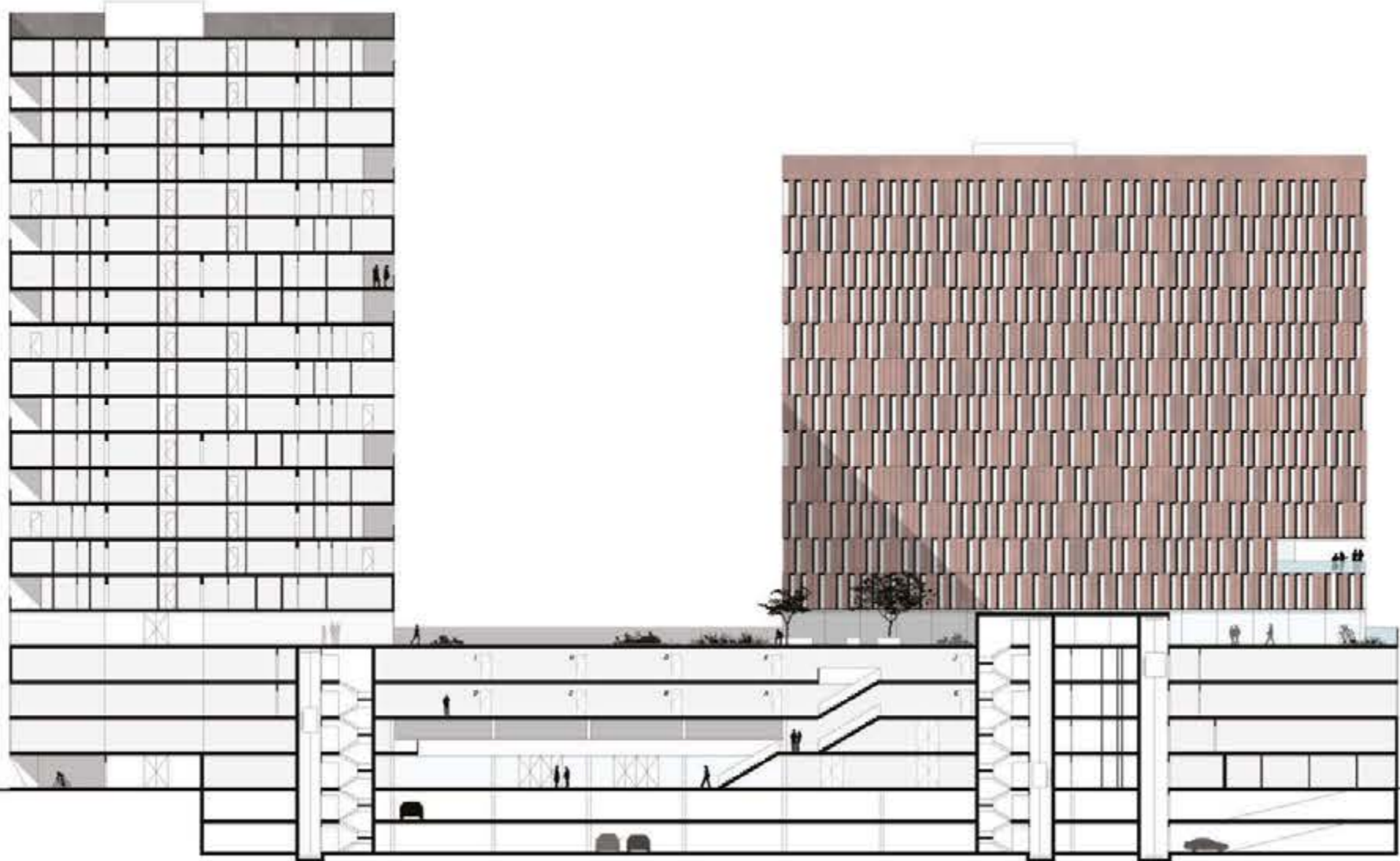


STUDY OF ACCESSES, VIEWS AND PLAYGROUNDS

THE NEW BLOCKS IN CONNECTION WITH MEDIACOLLEGE.  
THE PURPOSE IS CREATE A MIXED PROGRAM OF LIVING-WORKING-RECREATION AND EDUCATION.

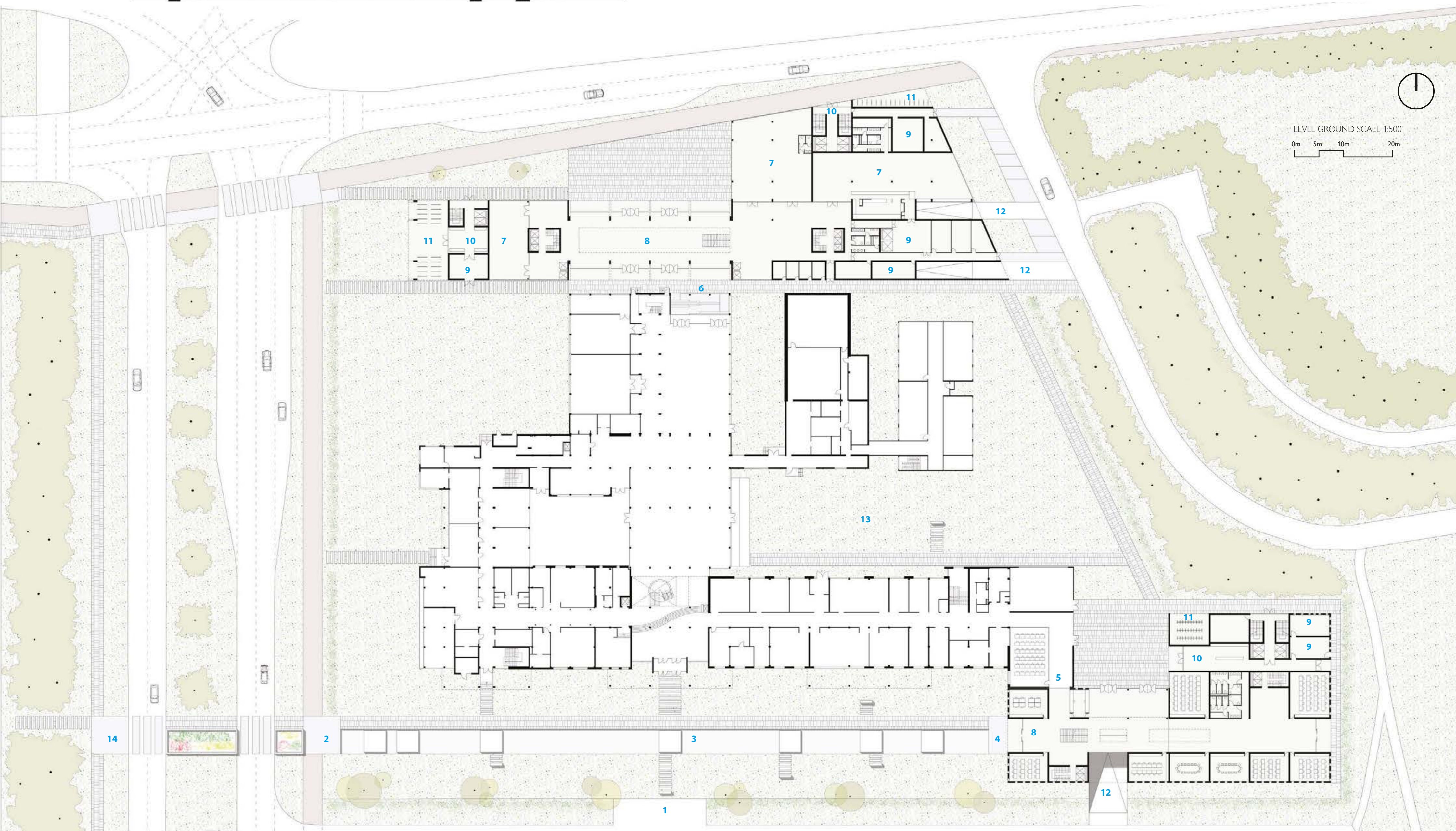
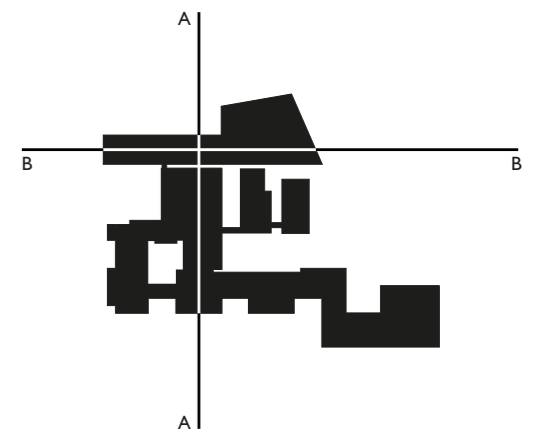
DEVELOPMENT OF TRANSVERSAL AND LONGITUDINAL AXES OF ACCESS. WITH THE NEW BLOCKS NEW ACCESS ARE CREATED AND MEDIACOLLEGE IS IN CONNECTION WITH ALL PARTS OF THE CITY AND HAVE A CHANCE TO BE AN EXAMPLE OF ATTRACTIVE POINT FOR SLOTERDIJK I.

THE "GROW-UP" ALLOWS VIEW RELATIONS THROUGH ROOFTOP GARDENS AND THE THREE HOUSING TOWERS. OVER THE TIME IS POSSIBLE REALIZE SPOT AND PATHS OF GREEN ZONE ON THE ROOFTOP TO MEDIACOLLEGE. THE AIM IS CREATE PRIVILEGE GREEN AREAS FOR MINIMISE THE IMPACT OF TRAFFIC NOISE AND POLLUTION.



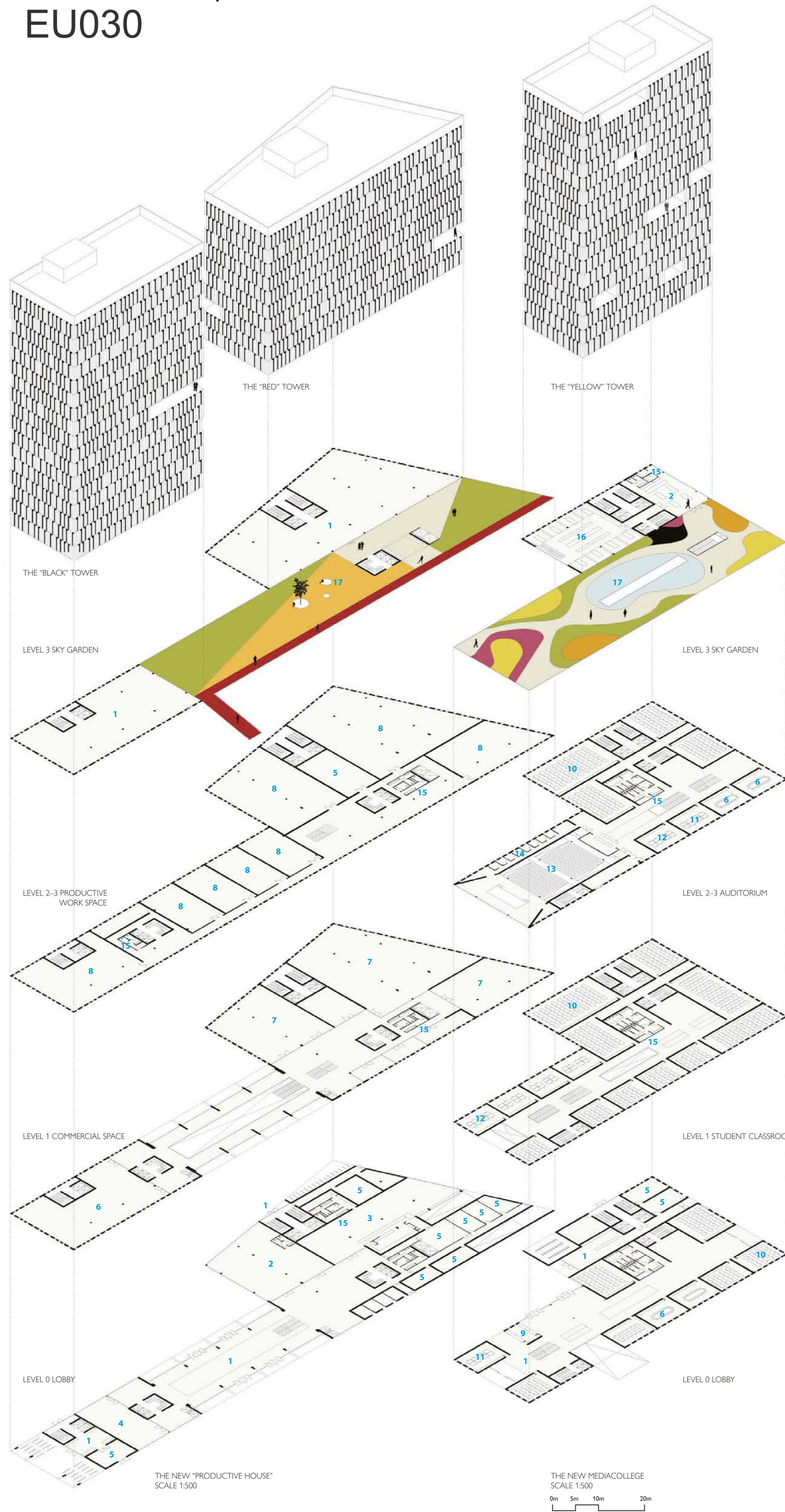
SECTION B-B SCALE 1:350

- 1 ACCESSO TO CONTACTWEG
- 2 NEW ACCESSO TO CONTACTWEG
- 3 WATERFRONT
- 4 NEW MEDIACOLLEGE
- 5 NEW CONNECTING OF ORIGINAL MA
- 6 NEW ACCESS ON THE NORTH SIDE TO MA TOWARDS THE NEW BLOCK
- 7 COMMERCIAL SPACE
- 8 LOBBY/MAIN ENTRANCE
- 9 UTILITY ROOM
- 10 LOBBY/MAIN ENTRANCE TO TOWER
- 11 BICYCLE PARKING
- 12 PARKING
- 13 PATIO FOR MA STUDENTS
- 14 FLOWERED CROSSING AND BOULEVARD



LEVEL GROUND SCALE 1:500  
0m 5m 10m 20m

# EU030



THE TOWER OFFERS THE POSSIBILITY TO HAVE A PRIVILEGED VIEW ON THE CITY.

THE "GROW-UP" KEEP A VIEW TO THE QUALITY ELEMENT OF THE LANDSCAPE THAT HARBOR, SEA AND PARKS. AT THE PUBLIC LEVEL WITH ROOFTOP GARDENS, WHILE FOR PRIVATE LEVEL THIS POSSIBILITY IS GUARANTEED BY THREE HOUSING TOWERS. THE MODULAR COMPOSITION IS THE STARTING POINT THAT PERMITTED THE CREATION OF A DIVERSITY TO THE DIFFERENT FLOORS.

THIS MOVEMENT IS ALSO VISIBLE ON THE FACADE. THE COMPLEX IS SURROUNDED BY A PERFORATED FACADE, THE OPENINGS HAVE DIFFERENT FORMS DEPENDING ON HOW PUBLIC THE USE IS SUPPOSED TO BE.

THE "YELLOW" TOWER HOSTS THE STUDENT ROOMS, IN ANY FLOOR THERE IS A LIVING SPACE FOR RELAX AND WINTER GARDEN.

THE "BLACK" AND "RED" TOWERS HOST THE OTHER TYPES SUCH AS SOCIAL HOUSING, MAISONNETTES, SIMPLEX WITH THE PURPOSE TO CREATE A MIX OF LIVING.

EVERY APARTMENT HAVE A LOGGIA TO ENJOY THE BENEFITS OF LIVING IN HIGH, SUN AND GOOD AIR.



TYPICAL FLOOR "YELLOW" TOWER  
SCALE 1:350



TYPICAL FLOOR "BLACK" TOWER  
SCALE 1:350

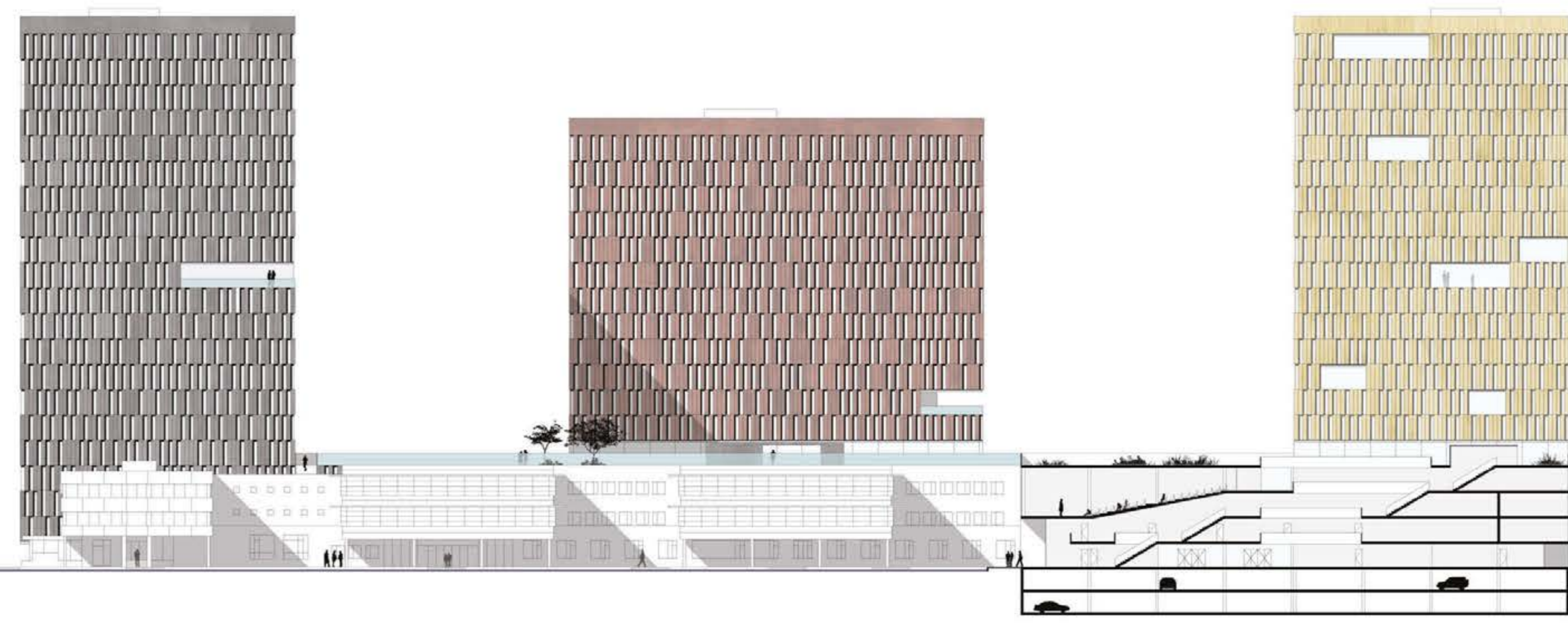


TYPICAL FLOOR "RED" TOWER  
SCALE 1:350

- 1 LOBBY
- 2 COFFEE SHOP
- 3 RESTAURANT
- 4 MARKET
- 5 UTILITY ROOM
- 6 MEETING ROOM
- 7 SHOP
- 8 BUSINESS SPACE
- 9 INFORMATIONS
- 10 STUDENT CLASSROOMS
- 11 TEACHER ROOMS
- 12 STUDY ROOMS
- 13 AUDITORIUM
- 14 TECHNICAL ROOM
- 15 RESTROOM
- 16 LIBRARY
- 17 SKY GARDEN



FUNCTIONAL PROGRAM



SECTION C-C SCALE 1:350