



View from North-West Corner



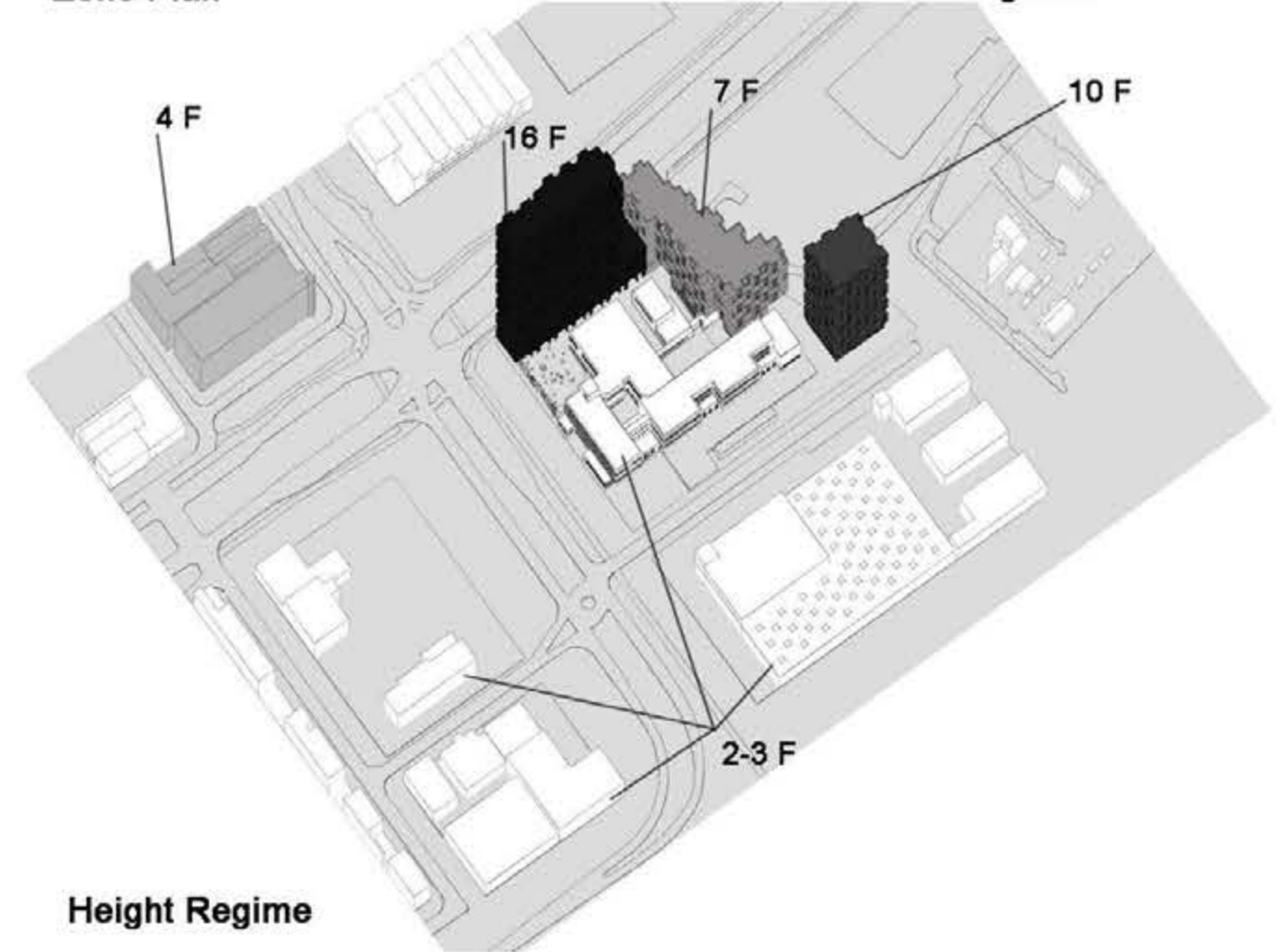
Amsterdam Plan

Project site



Zone Plan

Strategic site



Height Regime

Near the intersection of Transformatorweg and Contactweg, we placed the tallest of the new buildings. It such becomes a landmark at the gateway to Sloterdijk I. In relation to the new media productive spaces, the outer corner of the lower levels are made into multiple large media screens. In addition, the public space at the ground floor is defined by three dimensional names of the respective streets.

The functions of the new buildings are well delimited by levels, volumes, colours, or site placement. To the north, farthest from the noisy entrance to the Mediacollege, are the municipality residences, while to the east and above part of the school we placed the social housing and student homes. Therefore, the students can easily access the school, while the other residents have the possibility to be completely independent from it. The two housings facilities are linked by the common first few levels developed horizontally. The later contain productive and commercial spaces. To the south-east lays a tall building separated from the rest, which represents the additional space for the Mediacollege.

The main idea of the buildings' composition is a north-west - south-east diagonal formed by the two towers, with a strong horizontal consisting of the Mediacollege and the first few levels of the new buildings, acting as a counterweight.

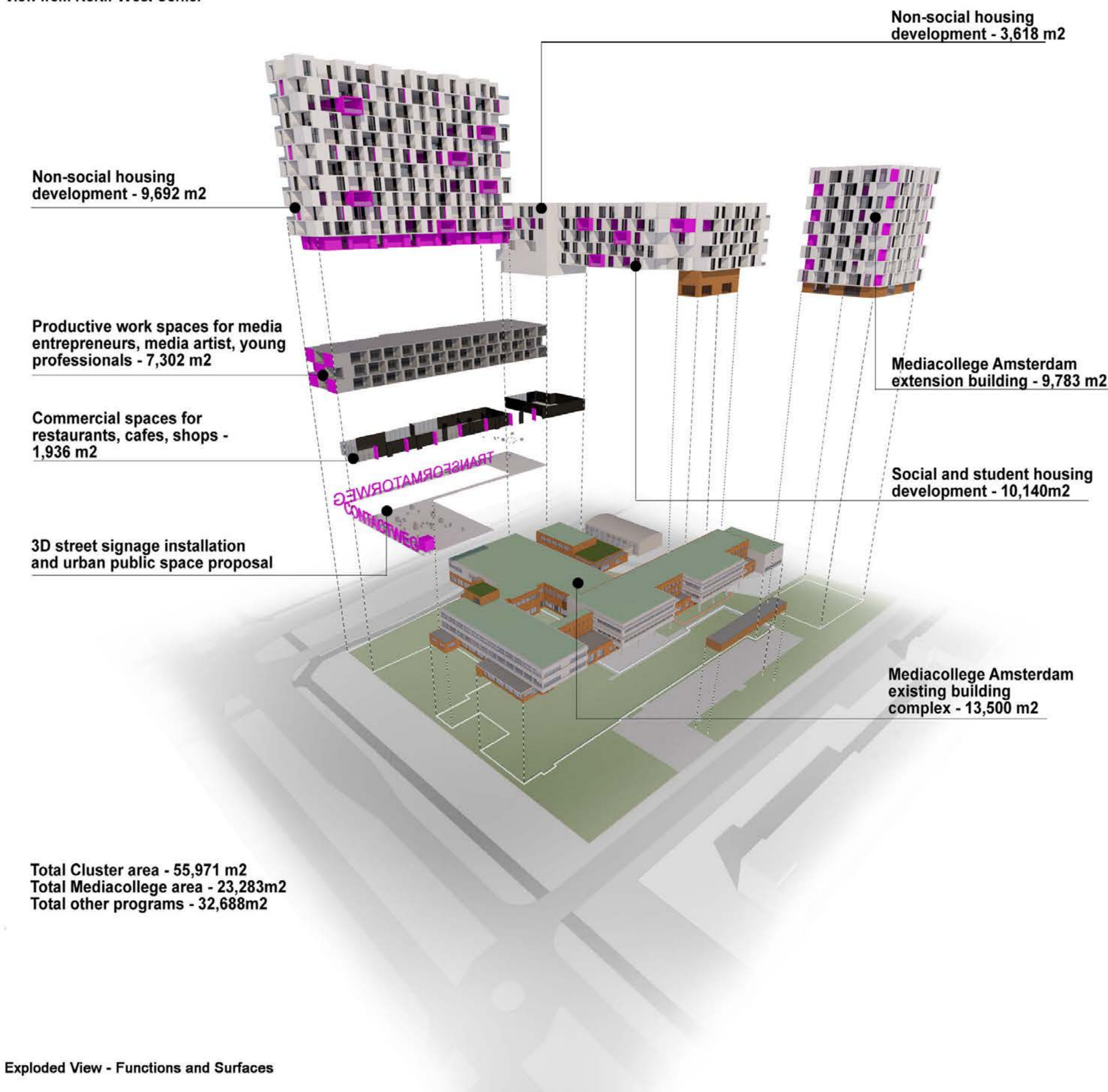


First Floor Plan 1:1000

- Commercial Space
- Mediacollege Spaces
- Social Housing
- Productive Spaces
- Public Space
- Green Area



2nd to 4th Floor Plan 1:1000



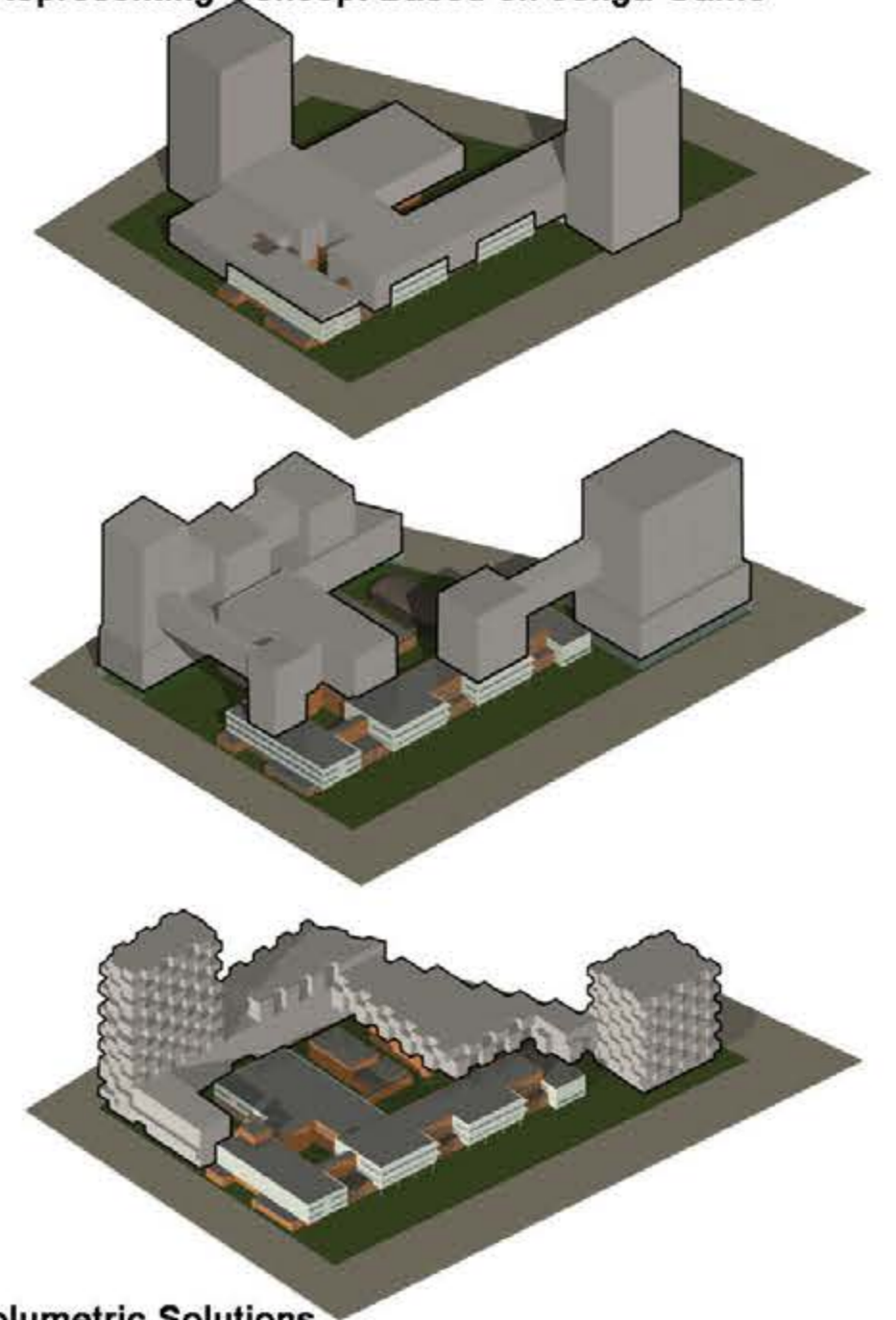
Exploded View - Functions and Surfaces



Night View from South-West Corner



Model Representing Concept Based on Jenga Game



Alternative Volumetric Solutions

The project name, "Majenga", is composed from the Mediacollege symbol and the word "jenga", related to the wooden (de)construction game. The later is derived from the Swahili word for "build", and so the resulting title represents in itself the idea of a development around the existing school. The project also borrows the original symbol's magenta colour, the name being a play on words.

The new buildings are constructed in relation to a jenga game, parts of the facades being alternatively pushed in or pulled out, like modular wooden pieces.

The proposed solution takes up very much of the pre-existent free space around the school. We such thought to give back the green area, by developing accessible planted terraces on both the new and existing building roofs.

The materials used for the new buildings are borrowed from the pre-existent school, therefore creating a strong visual relationship between the new and the old. Also, the green terraces unify the assembly when seen from above.

**Ma + jenga + [Magenta Square] = Majenga**  
Name Composition



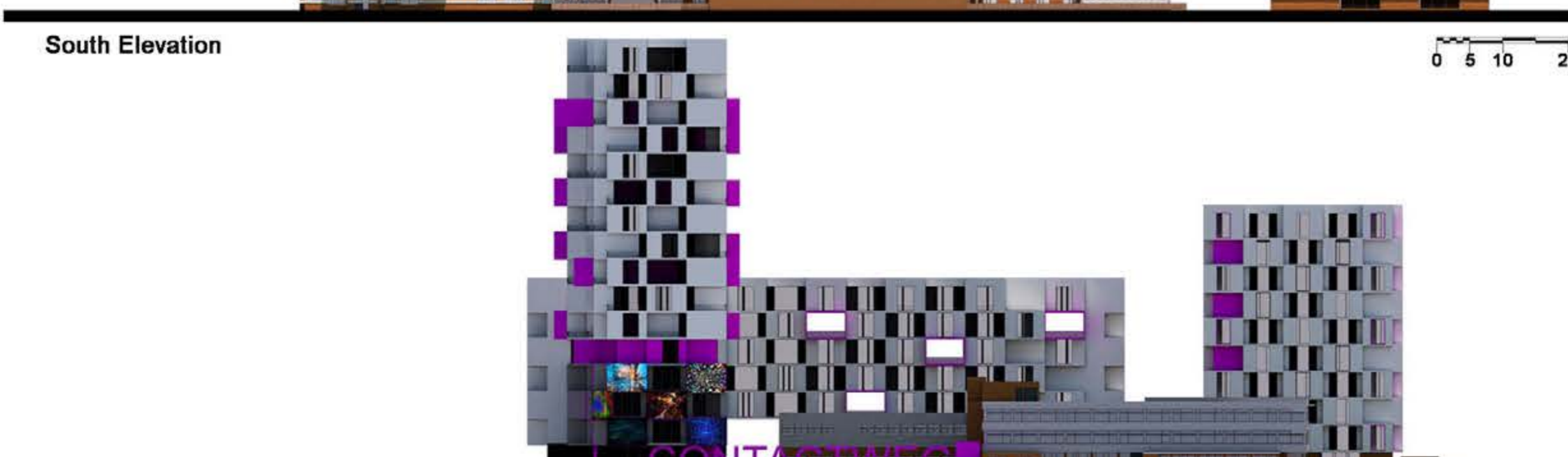
North Elevation



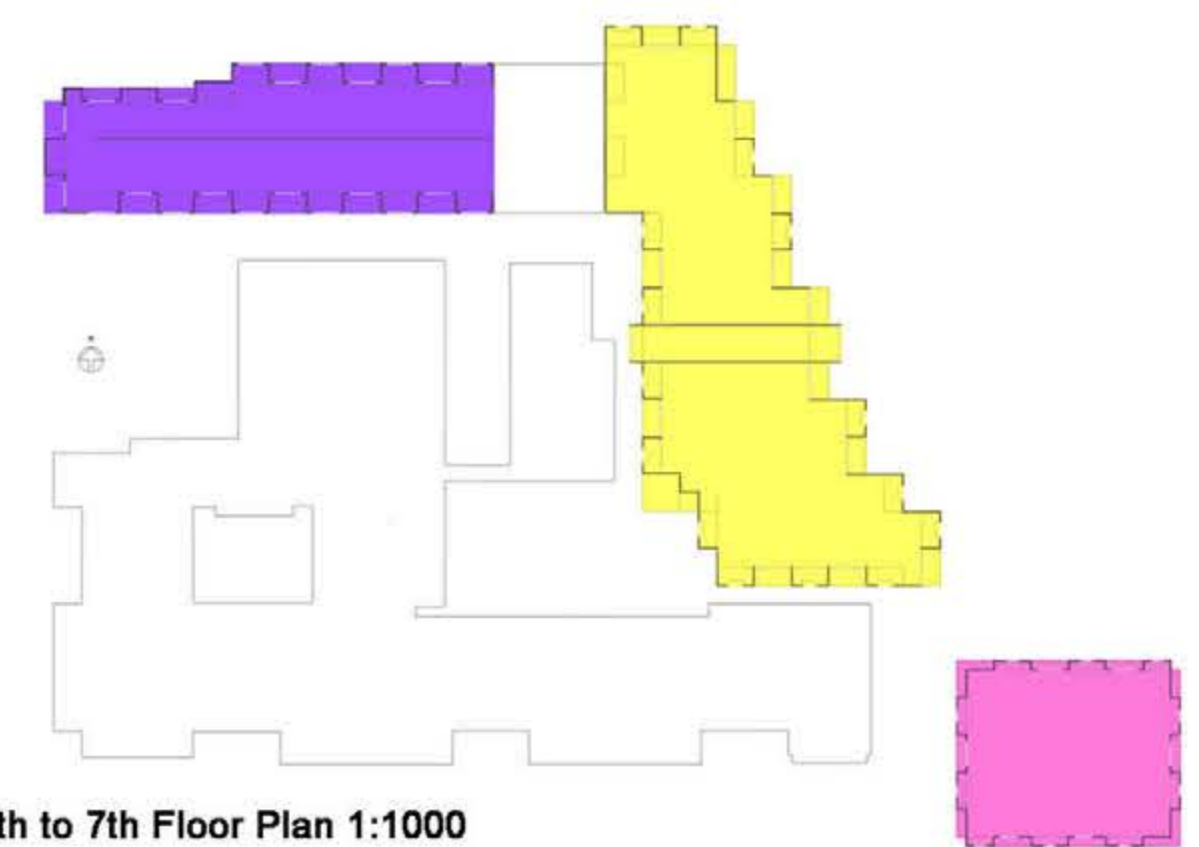
East Elevation



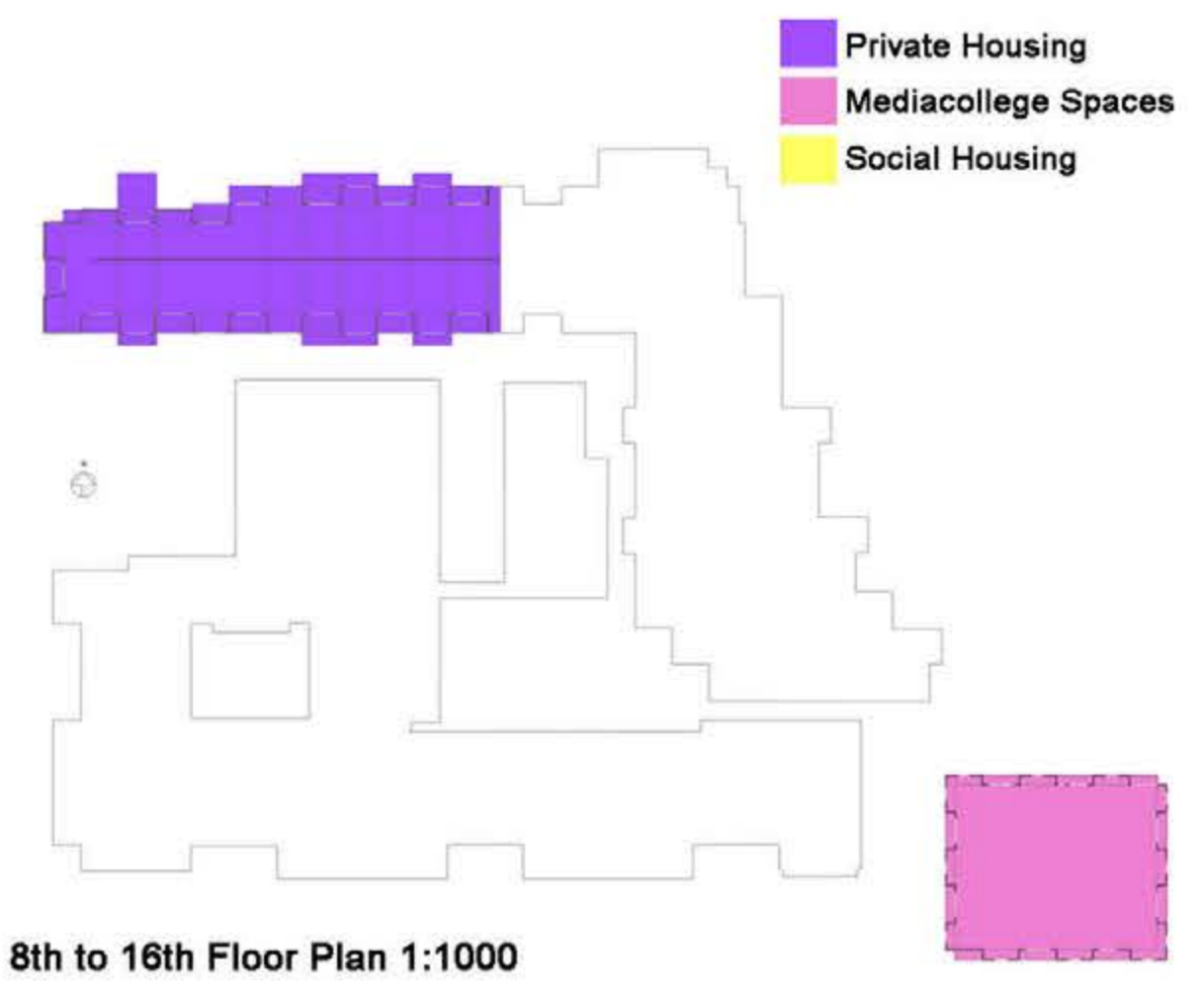
South Elevation



West Elevation

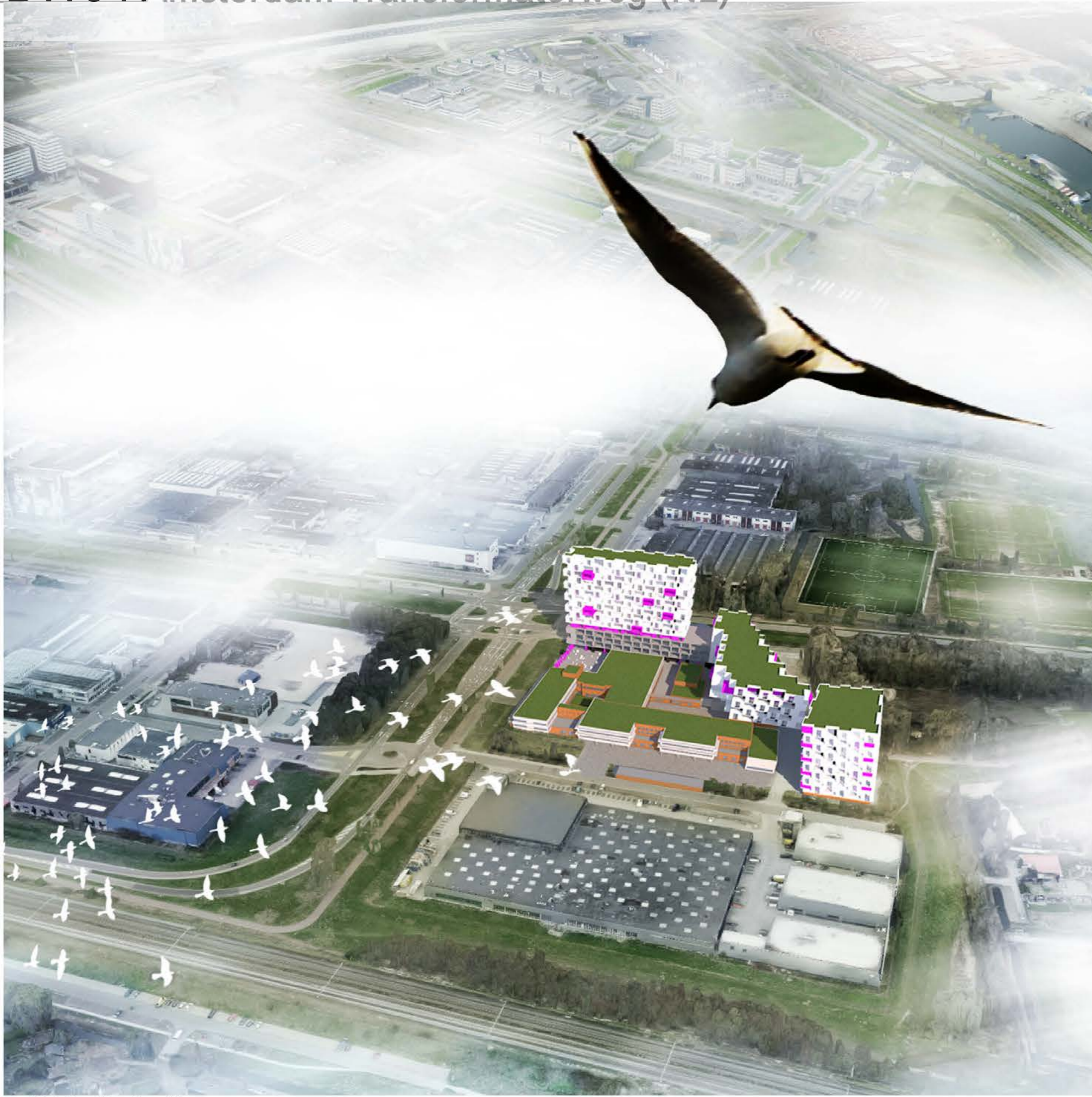


5th to 7th Floor Plan 1:1000

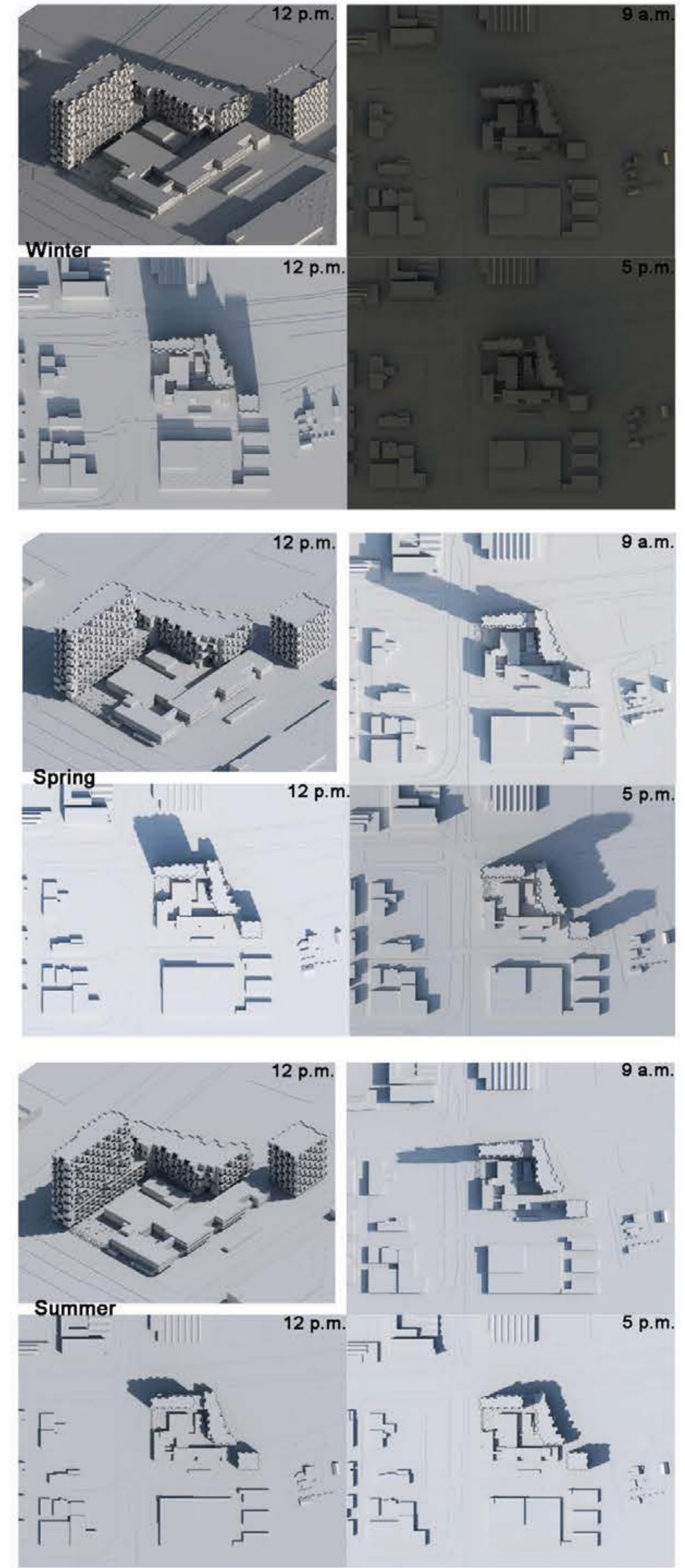


8th to 16th Floor Plan 1:1000

■ Private Housing  
■ Mediacollege Spaces  
■ Social Housing



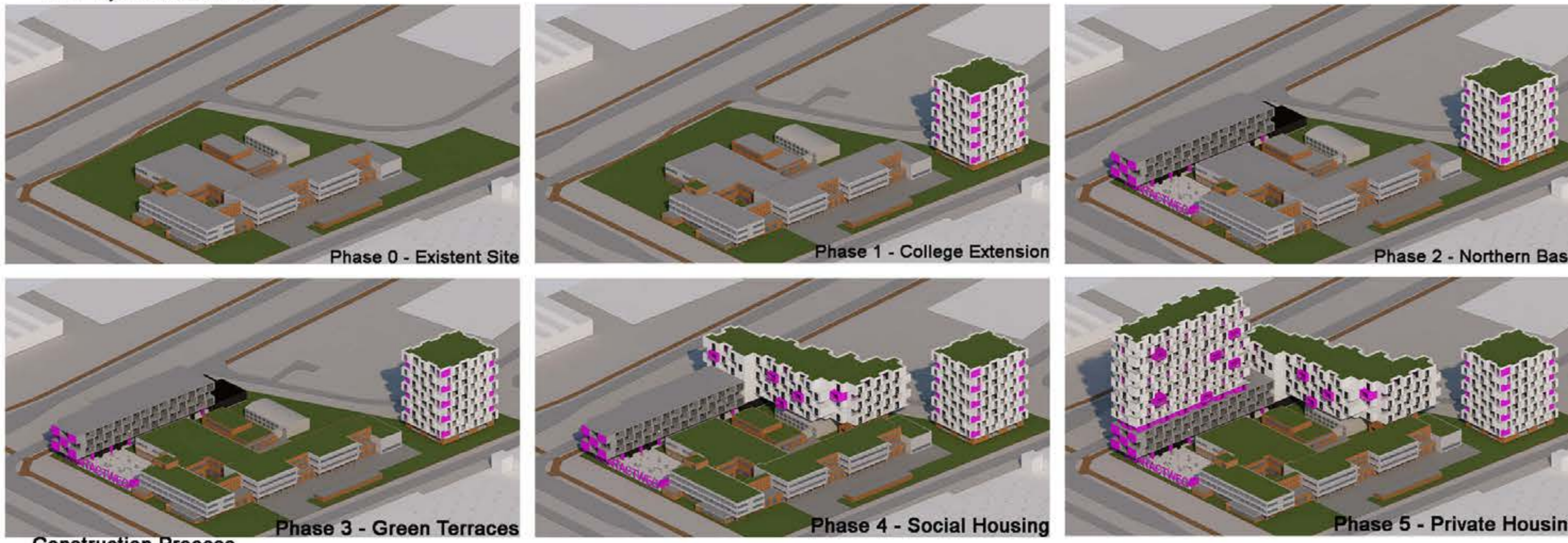
Bird- Eye View Over Site



Sun Study

The height and position of each new construction was chosen as to receive the best lighting without blocking too much sun for the others or for the pre-existing school. The south-eastern tower only shadows a corner of the site for a few hours in the morning, while getting favourable light at any hour. The housing facility to the east hinders the natural illumination only in the morning. The taller tower is placed on the north side of the site, only shadowing the busy Transformatorweg. Both residential buildings have openings on all four sides.

For the Mediacollege to fully function during the construction process, the first to be built will be the extension of the school to the south-east, which is independent from the rest and will therefore not hinder the classes. The later will then be temporarily moved in the tower, as to not be disturbed by the noise and dust. The base to the north will follow, opening the public, commercial and working spaces. These will also be used for holding classes, while the green terraces are fixed on the pre-existent buildings. Next will be the social and student housing unit, allowing the students to move in closer to the school and its new building. Last on the list is the residential tower, which will then not be bothered by any construction noise by the time the residents occupy the apartments.



Construction Process



View from North-East