

🌬️🌬️🌬️🌬️🌬️ **Village of Wind**

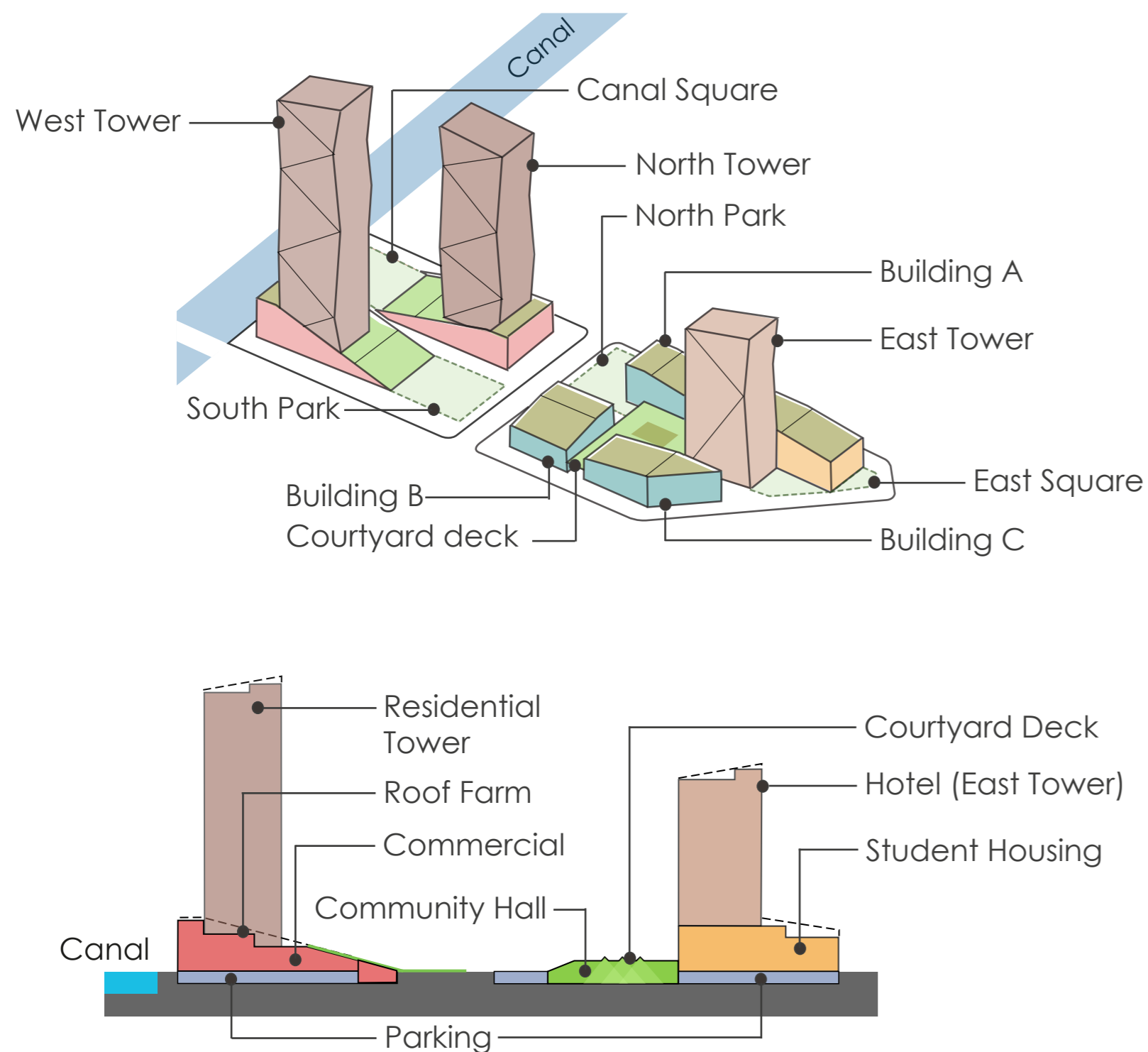
View from the East Side



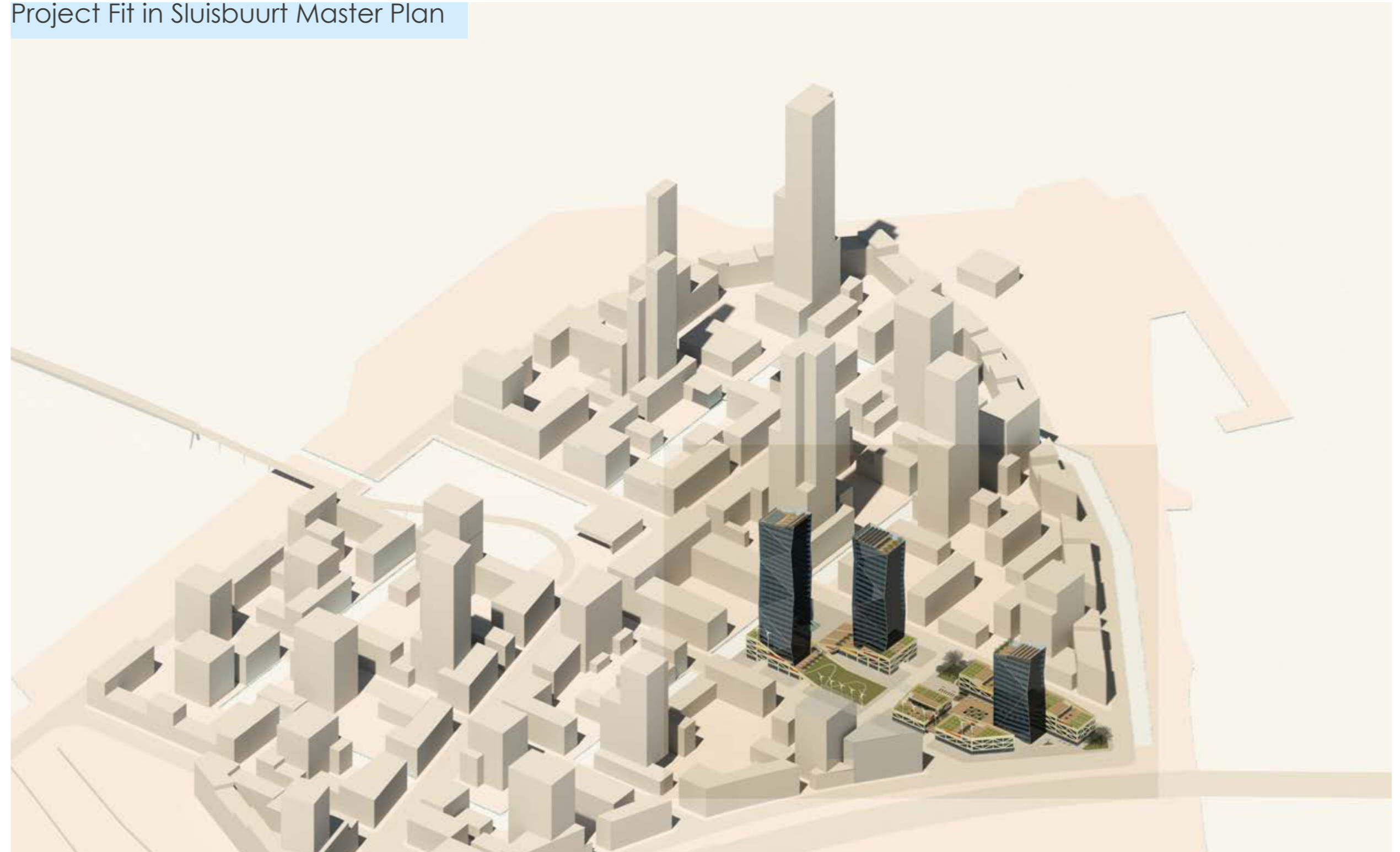
The Village of Wind project questions how productivity can coexist with urban life. Recent design efforts toward a mixed city have improved city environments through gathering different activities that were separated after the industrialization. As a result, many places, where residential, commercial, and office buildings are well-harmonized, began to appear. Nevertheless, the productive economy tends to be excluded from these places. For example, farms, wood shops, and warehouses are still located in the periphery. This phenomenon is due to the demand of wide space and the pollution deriving from the productive activities.

The exclusion of productivity has resulted in unbalanced city lives and weakened the social interactions that used to be formed through productive activities in a pre-industrialized society. However, the current movements of urban agriculture and 3D printing foreshadow new ontological possibilities in relation to the mutual constitution of productivity and urban living. Vegetated roof techniques potentially offer vast areas for urban farms and developing 3D printing techniques illuminate possibilities in solving the noise and dust problems of fabrication space. Future technologies may be able to revitalize productive activities in an urban setting and recreate active social interactions like an old village.

**Intro & Program**



Project Fit in Sluisbuurt Master Plan



The Village of Wind project is a high-rise tower complex design in Sluisbuurt, Amsterdam. Sluisbuurt is an island located in Amsterdam-East. The City of Amsterdam plans to develop the island as a new residential area in remedying the lack of housing in downtown Amsterdam. This project proposes a mixed-use complex which includes productive space such as vegetable gardens on the roof, 3D printing space, bike shop, pottery studio, and woodshop. These production activities are integrated into the residential and commercial complex. In addition, a weekly running farmers market provides opportunities to locally sell the outcome of the activities.

Location of Project Site



The electricity and water necessary for the vegetable gardens are supplied by wind turbines installed on the site. The wind turbines along South Avenue and the canal define two important axes of the site. South Avenue is the main bike axis since it continues to the bike trail toward the downtown Amsterdam. The canal, which circulates Sluisbuurt, has the capacity to be a recreational hub. These alignments with the two axes also facilitate the wind turbine operation since the prevailing wind in Amsterdam blows from southwest.

Moreover, wind turbines invoke the national identity of Amsterdam. The ancient Dutch utilized windmills to reclaim their land from the sea. As such, windmills signify their challenge and frontier spirit. By utilizing wind turbines for reclaiming farmlands from the building forest, this project reenacts the productivity of ancient Dutch in a modernized way.

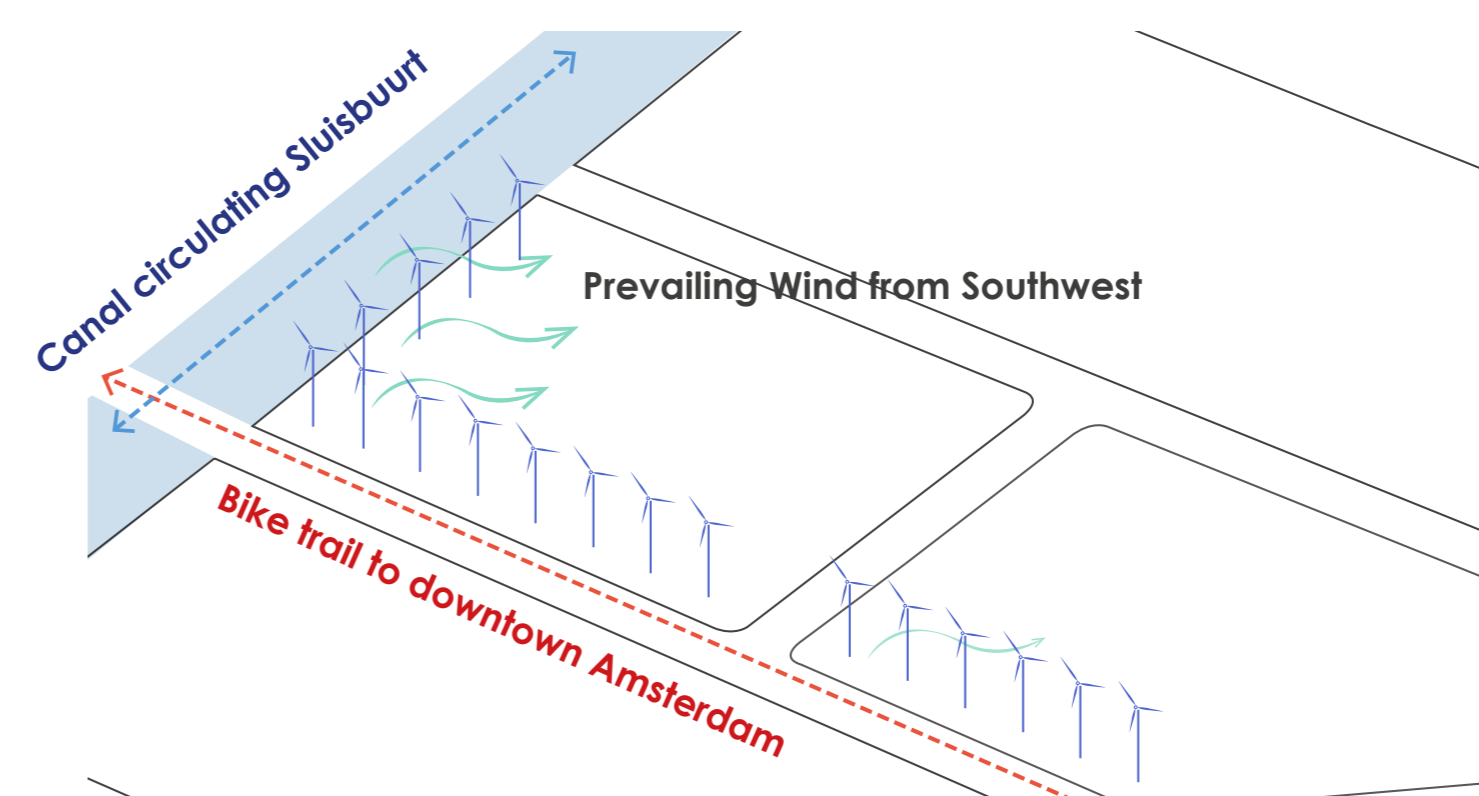
View from Southwest



View from the Canal



Location of Windturbines & Prevailing Wind



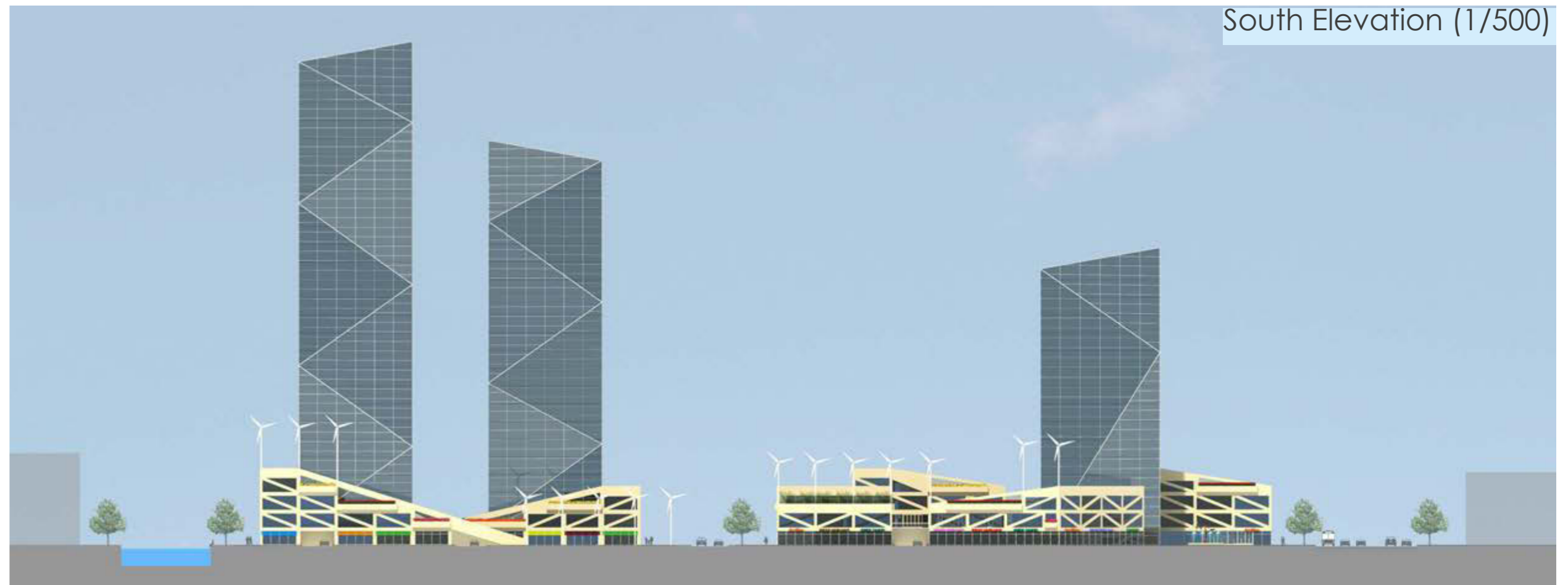
In addition to the series of wind turbines, a mobile sculpture is installed in the fountain at East Entrance Square. This installation serves a role as an east gate of the city since Sluisbuurt is located on the east edge of Amsterdam. Watching the sculpture's movement along the wind and the wind turbines rotating far away, people will remember the history of Amsterdam.



East Elevation (1/500)



South Elevation (1/500)



West Elevation (1/500)

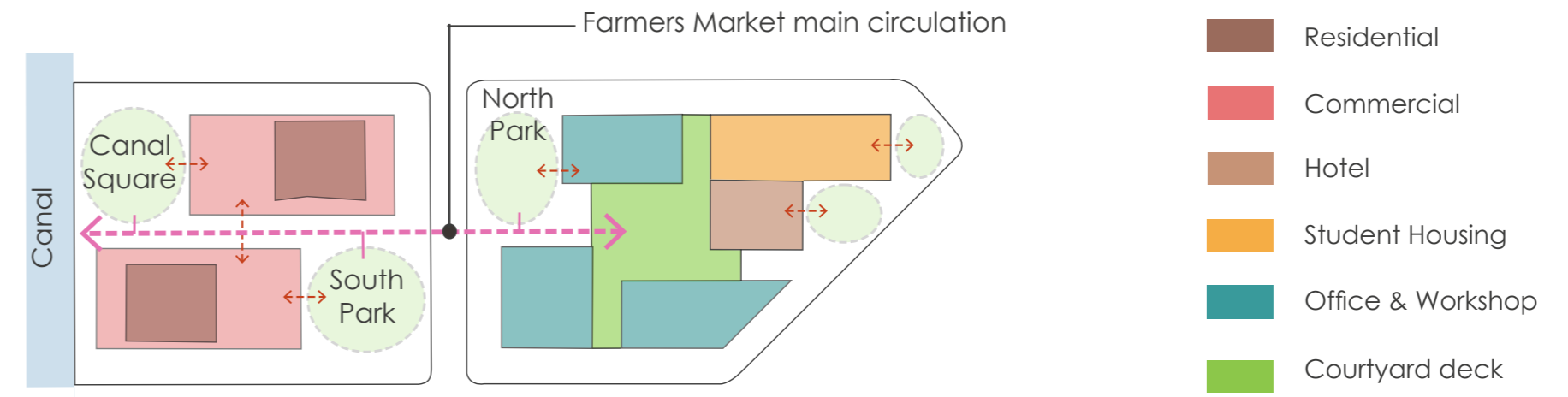


North Elevation (1/500)





Farmers Market & Space Connection



Block 6B is comprised of North Tower and West Tower. Both towers are residential with their podiums functioning as a combination of retail stores and roof terraces. The top of the podium is used by residents as their vegetable gardens, and the top of the tower is utilized for community space and photovoltaic power generation. The terraces on the second floor are directly connected to the ground level; the West Tower terrace becomes a sloped lawn and gradually continues to the South Park lawn area; the North Tower terrace is connected to the grandstand of the Canal Square. Center Street at 6B block is a commercial zone with various retail stores, which play a role as the main axis of the farmers market.

Block 6C contains a hotel, student apartments, community space, offices, workshops, and outdoor area. The hotel is located in the East Tower, which essentially includes the base of the tower that houses the student apartments. Building A, B, and C are mixed-use space, and connected to the courtyard deck which has a multi-purpose hall for community events below. The skylights, placed with vegetable gardens on the center of the courtyard, bring natural light to the multi-purpose hall. North Park between Building A and B offers a recreational area with an open-air theater.

