

CZ671

TROPICAL GARDEN

The ring E: 1/500

To transform a non-place into a friendly place

The car park in Piarcopelein square currently gives an answer to an urban need, but its structure is not adapted to human conditions such as scale, softness or character.

The first step of the intervention is to build an automated parking building on the north side of the site, where the existing parking lots will be transferred to. This will be followed by the construction of a perimeter ring around the station, where new parking facilities for bicycles and buses will be created.

Thus, once the project site has been emptied, a big glass vault will be built, at the same level as the railways infrastructure. This vault helps to shape a delimited space, which is protected from train noise and rainfall. Thanks to this structure, Piarcopelein square will be able to house activities all year round in all sorts of weather conditions. The vault also provides adequate temperature and humidity levels for a tropical garden projected inside it.

The result is a new place, pleasant for people and adapted to human scale, ready for the development of a mixed program of production and leisure.

To connect the three squares

A perimeter ring around Sloterdijk train station is made by just connecting Orlyplein square with the existing eastern pedestrian runway over the railways. This ring is at the same level as the square and the pedestrian runway, which are six metres high.

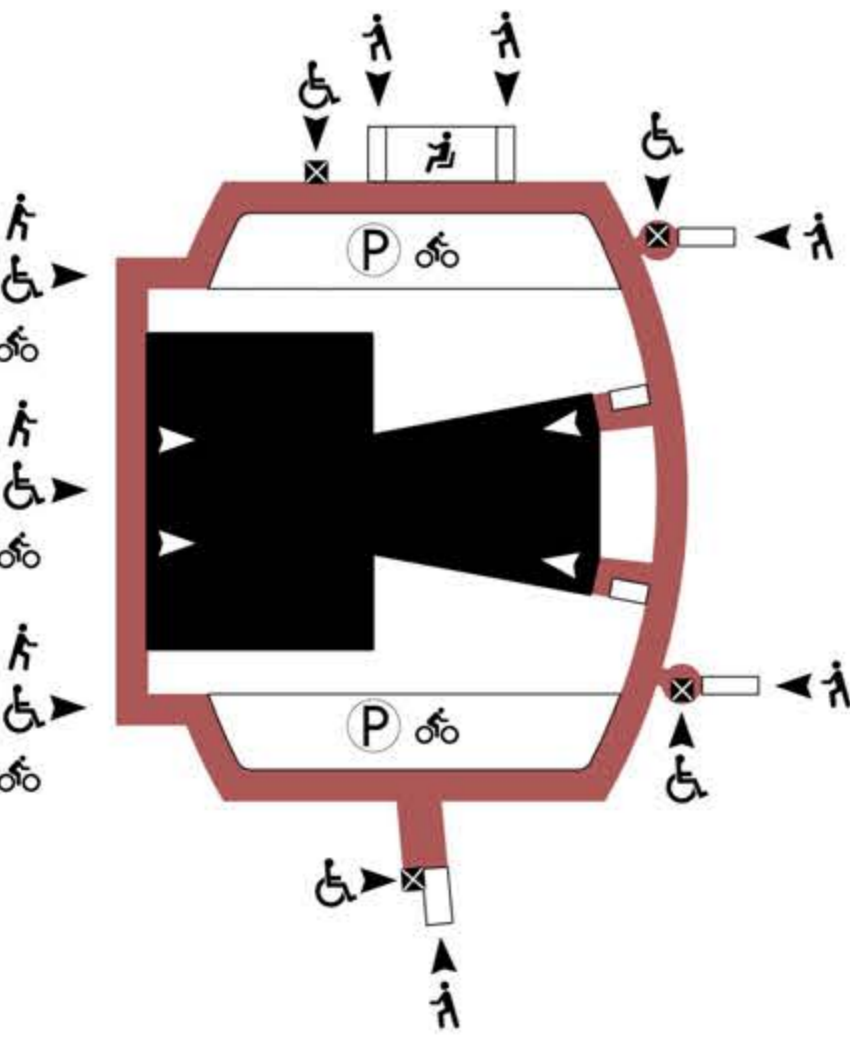
Two further pedestrian connections arise from this ring, situated on the north and south sides of it, in order to link Carrascopelein and Piarcopelein squares with Orlyplein square and the train station itself. These connections consist of wide stairs, lifts and bleachers, which give access to disabled people to the ring from the lower levels. This is how the project manages to integrate every pedestrian connection flowing to Sloterdijk station on the same level in a simple and resounding way, which is visible from every direction.

To favour cycling in Amsterdam

The new perimeter ring contains a big bicycle parking surface, which contributes to the development of a sustainable transport system and an expected increase in bicycle use inside this city zone.

The area beneath the ring is not only reserved for temporary parking lots for private vehicles or tourist buses, but also for bicycle users who want to leave their bicycles on the way to Piarcopelein square or even Sloterdijk station.

PEDESTRIAN AND CYCLING ACCESS TO THE RING



- Parking area
- Pedestrian access
- Disabled access
- Cycling access
- Bleachers
- Access to the ring
- Access to Sloterdijk station
- Lift

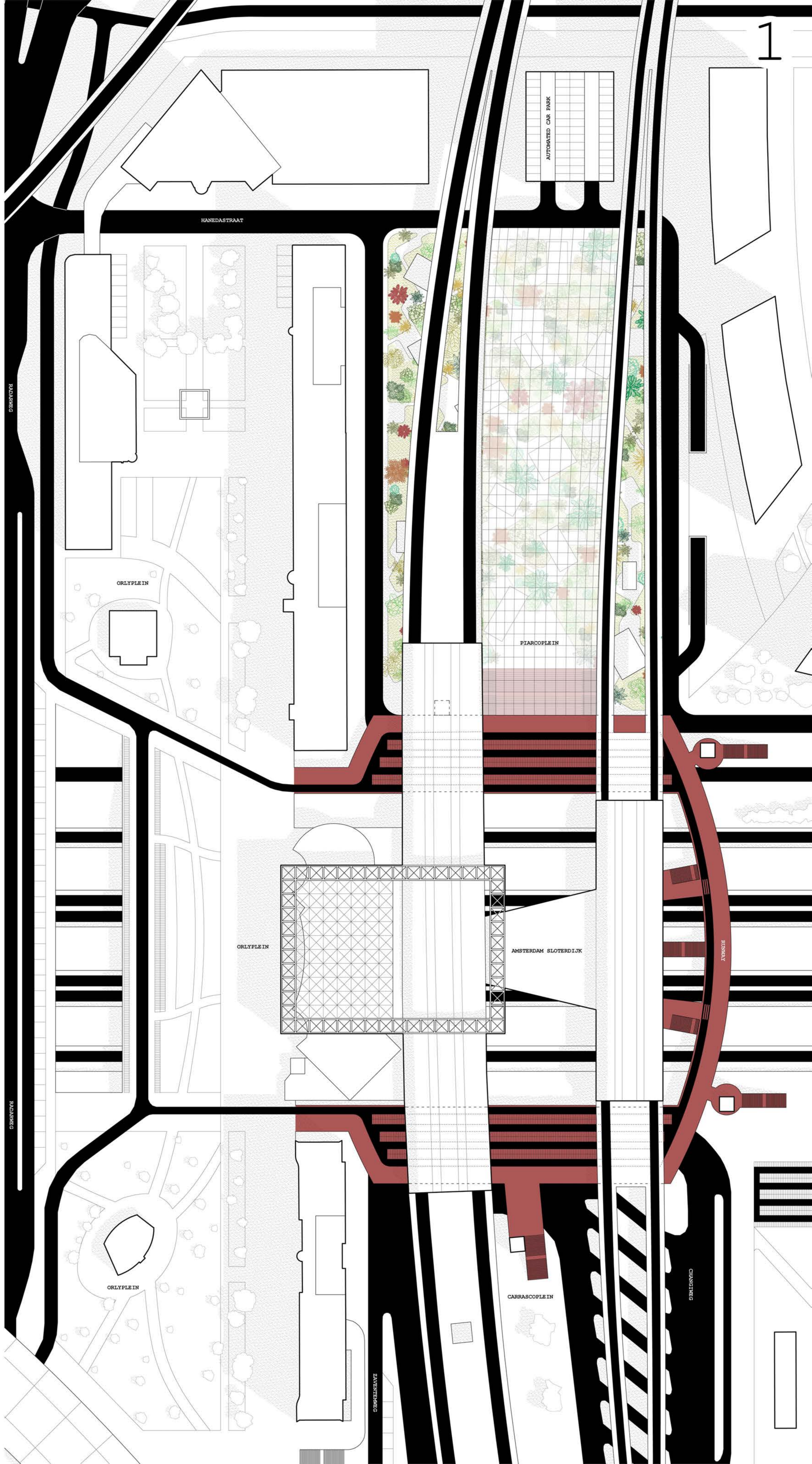
TEMPERATURE GRADIENT INSIDE THE VAULT



New parking lots:

Automatic car parking (7 floors)	392
Temporary car parking	20
Bicycle parking (station ring)	1960
Bicycle parking (tropical garden)	180
Tourist bus parking	1

- Tropical garden
- Sloterdijk station ring



CZ671

TROPICAL GARDEN

Piarcoplein garden E: 1/200

To build productive city connected to transport infrastructure

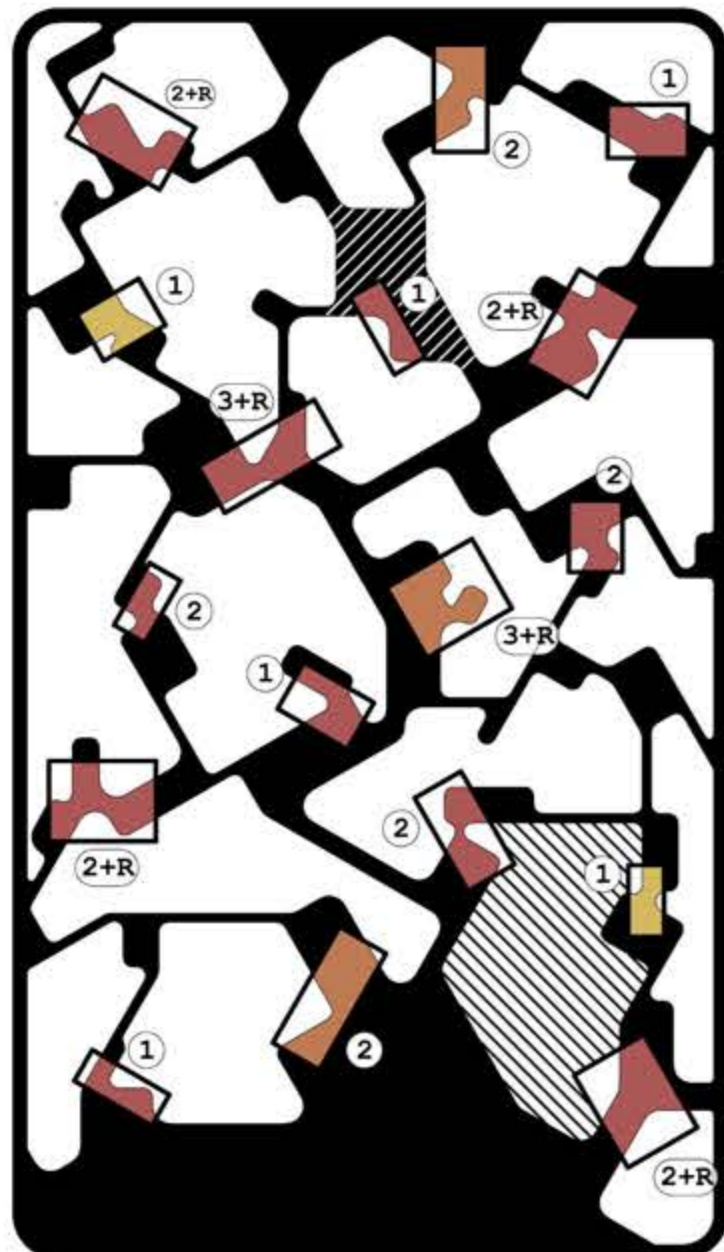
The project proposes a tropical garden which is activated and complemented by low density buildings of no more than 8 m high. Everything is organised under the glass vault which is situated at the same height as the railway infrastructure. Inside a place buzzing with the movement of hundreds of people going from one place to another, we propose diverse spaces where temporary activities can take place: co-working, networking, workshops or social events, complemented by leisure areas. This is a place designed not only for a fast society made up of freelance workers who carry their office everywhere they go, but also for any kind of person who is looking for a place to meet, play, rest or reflect.

The programme is about being able to combine work and leisure activities in dynamic spaces which are both interior and exterior. These spaces are designed looking for a diverse range of qualities: heights, dimensions, temperatures, sights and different degrees of privacy. They are furnished with mobile and modular furniture, adapted to the specific needs of the users. In addition to this, public toilets and eating areas will be built across the vault.

To bet on an attractive place for tourists

One of the incentives of the proposal is to create different nodes of interest inside the city, in order to decentralize the current tourism in Amsterdam. That is why this is a project that introduces an unprecedented urban space, a glass-vaulted square that contains a tropical garden. In addition, this garden brings up a way to integrate architecture and landscape in radical terms: vegetation literally enters inside the buildings and provides them with a significant atmosphere.

TROPICAL GARDEN PROGRAM

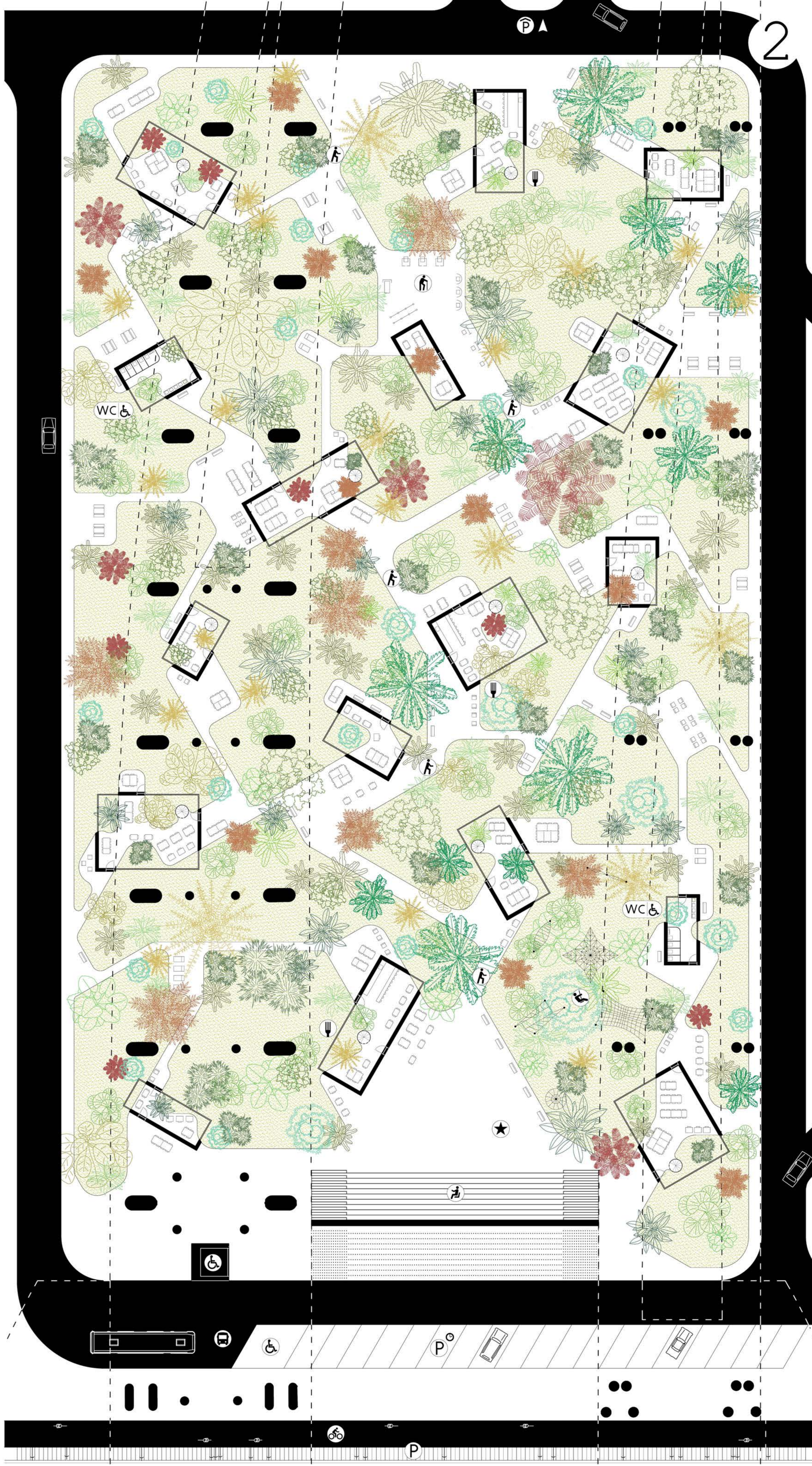


Tropical garden program surfaces:

	Tropical garden	7263 m2
	Exterior workspaces + leisure areas	3659 m2
	Rooftop workspaces	498 m2
	Interior workspaces	970 m2
	Hostelry	496 m2
	Public toilets	56 m2
	Elderly park	149 m2
	Playground	524 m2

- ① 1 floor
- ② 2 floors
- ②+R 2 floors and accessible rooftop
- ③+R 3 floors and accessible rooftop

- -
 -
 -
 -
 -
 -
 -
 -
 -
 -
 -
 -
- Temporal parking for private vehicles
Bicycle parking
Automated car park building
Tourist bus stop
Bicycle route
Disabled accessibility
Main pedestrian path
Bleachers
Playground
Elderly park
Social events area
Food establishment
Public toilets



TROPICAL GARDEN

A city break



To introduce contrast into the city

The goal of the project is to create a living and working place inside one of the main metropolitan transport hubs in Amsterdam city. In response to this starting point, the proposal radically makes an opposite urbanism to that of the current neighbourhood: a human scale place in which a dense wild garden with foreign species grows and hidden buildings which seem to be chaotically organized show up along the path, everything covered by a warm atmosphere protected from rain and city noises. This contrast is perceived both in urban and building interior spaces: the garden literally enters inside them, as if they were forgotten ruins. Everything is set up in order to carry the user physically and mentally far away from the surrounding city, helping them to both rest or concentrate depending on their mood.

