

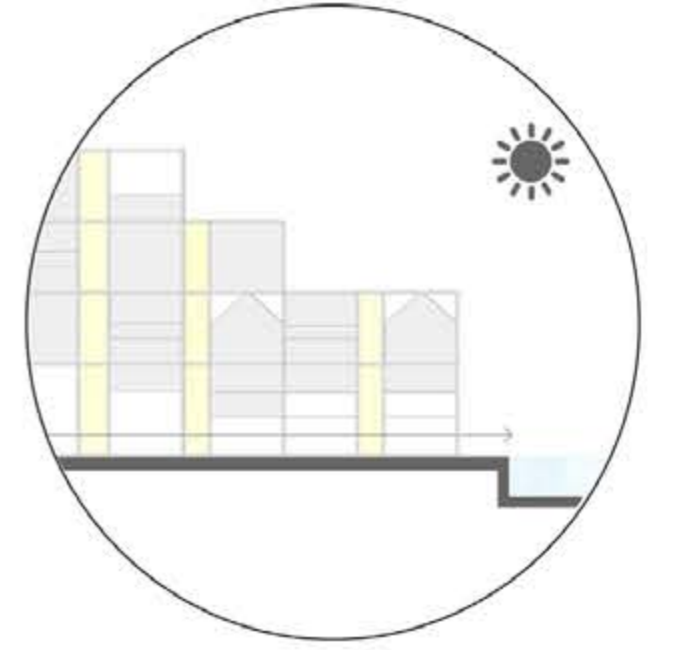
DH174 Amsterdam Papaverdriehoek (NL)

VERTICAL GARDEN-CITY

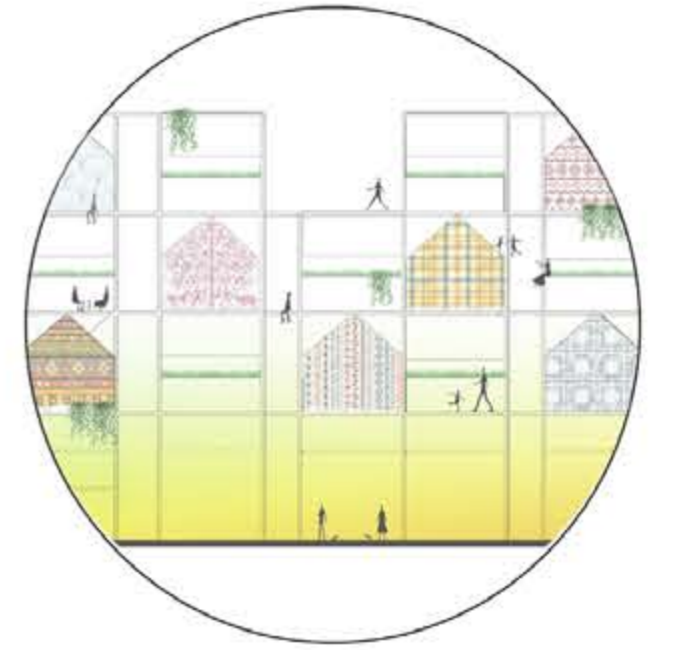
1



Papaverdriehoek site is located between the historical garden-city neighborhood and the former industrial area where currently manufacturing workshops and other service related functions are. The proposal is a mix between the two. **Metallic structures inspired by cargo containers form land plots on various levels and hold (garden-city) homes.**



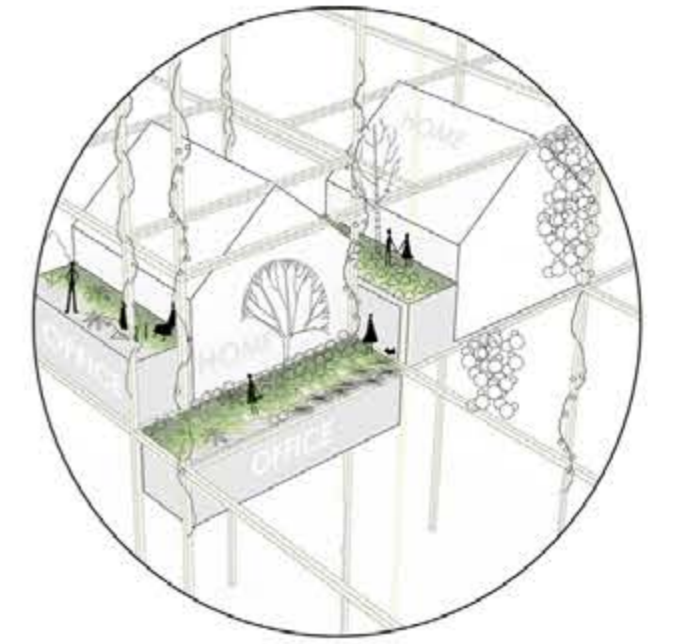
The structure has a **decrease in height towards the water and the south**. This allows all modules to have a **good lighting as well as amazing views**. The ground floor is left empty, to allow a **direct relationship with the waterfront**.



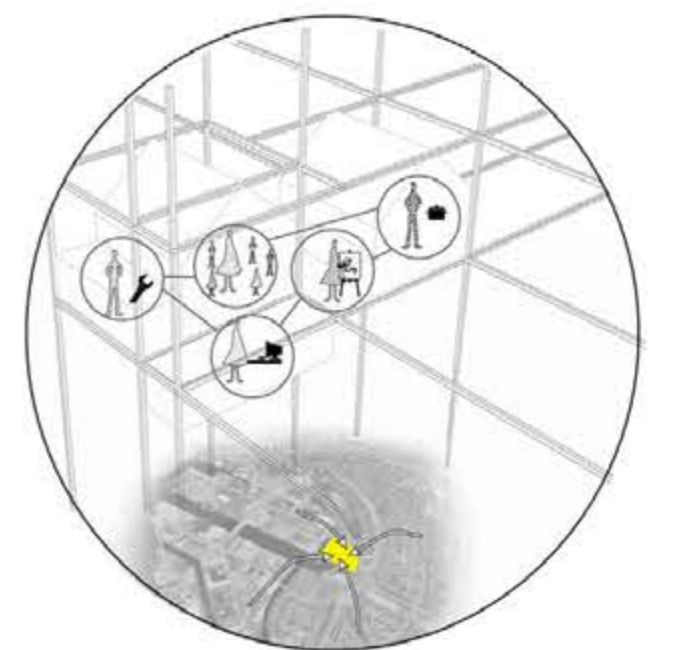
The puzzle has a **gradient of privacy from the lower floors used for workshops and manufacturing spaces to the upper floors used for homes and private offices**. Since the residential modules resemble a traditional house and the work spaces are placed in containers, there is a **visual vertical gradient from public to private**. The proposal is therefore, a **community maker**. People of all education and cultural backgrounds are welcomed to move here and express their identity through their own houses and offices.



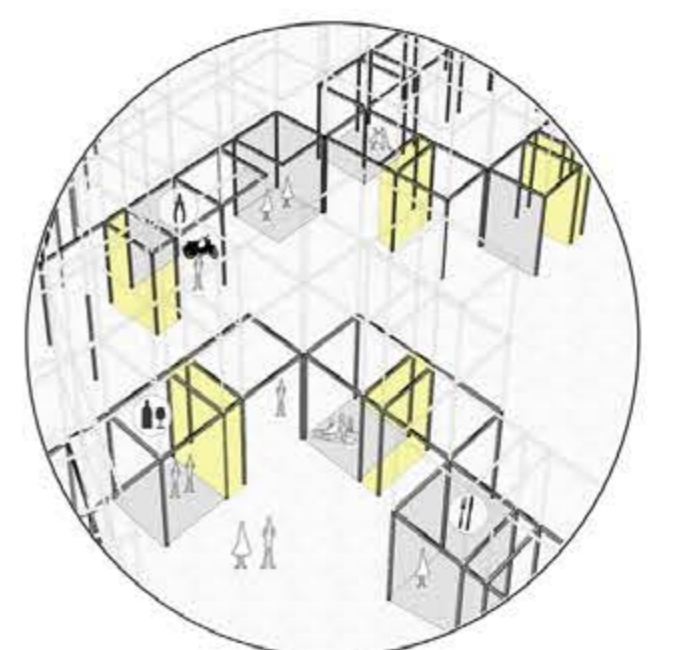
The structure is developed as a mechanism integrated in a **local circular economy reinterpretation**. The metallic structures contain water pipes connected to the grey water filter tanks. The rain water is kept in basins between the houses and is further reused for the irrigation of the gardens.



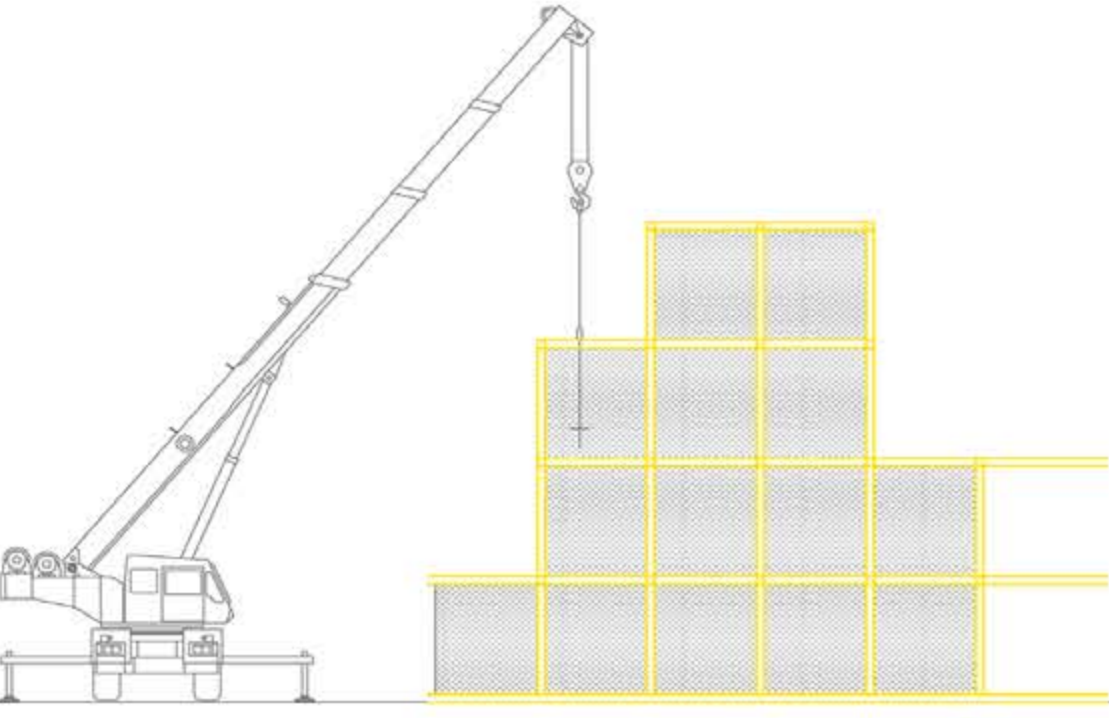
The **space in-between the modules is as important as the interior space**. It forms horizontal, inclined or vertical garden which are used for **socialization as well as a source of fresh vegetables and fruit**. The houses and working modules form clusters that have **common outdoor spaces**. Since the building is continuously used by people that either work there or live there, the gardens are permanently used and maintained.



A characteristic of this neighborhood was the social division. Through job opportunities it is foreseen to create a **strong and united community**. The businesses from the surrounding are all brought together. People of all cultures and education levels can find an opportunity: from nursery workers, waiters, cooks, dancers, car engineers to artists, architects and education developers, working either in their own office module, or in the open global containers existing at the ground level as part of the undivided community.



The structural matrix provides for a **diverse arrangement of housing+working+green modules** that surround the existing vertical circulation clusters. The **ground floor space is left open for workshop and creative activities**, as well as small scale retail.



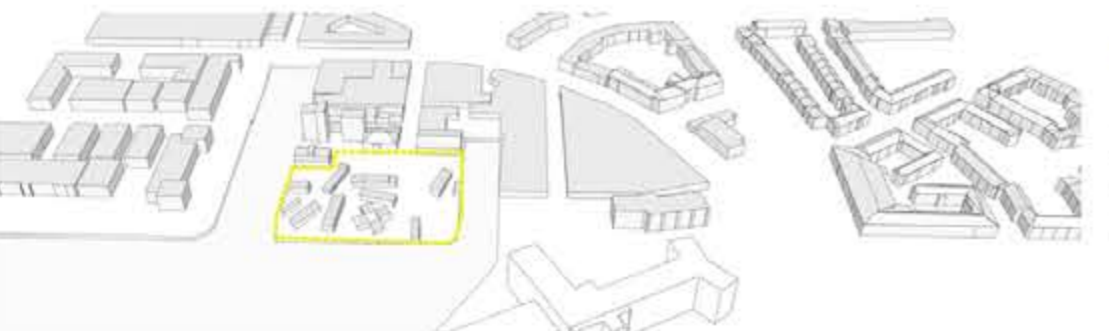
characteristic industrial development, atmosphere and terrain occupancy cartesian grid, rigid metallic structures, unfinished, rugged volumetry



volumetric puzzle that values both neighbouring developments into an open living+working environment characteristic for ANoord



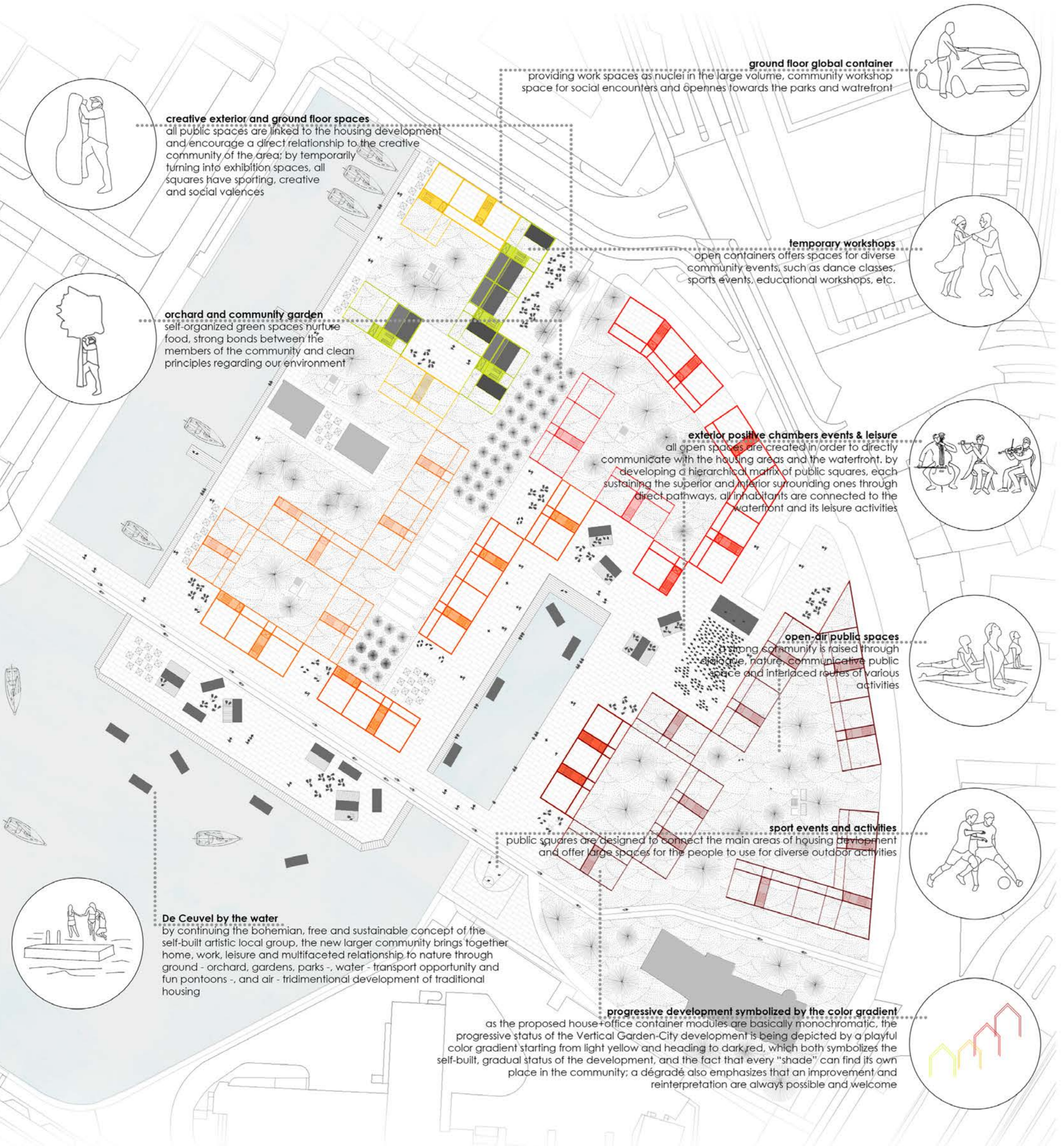
garden-city atmosphere, horizontal/human scale environment cosy+familiar atmosphere, perennial housing, link to nature

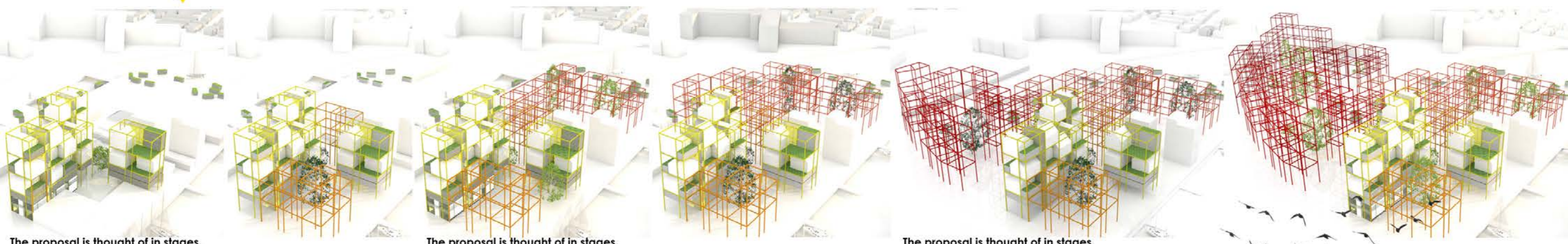


De Ceuvel community is a landmark in the area. It is the **main social attractor**, while being a successful **bottom-to-up project** that followed some initial rules and that developed organically afterwards. However, the entire area will only be kept there for some more years... The proposed project is a **3D De Ceuvel** that becomes an even bigger attractor of people eager to join the dialogue with the **experimental living+working environment**, social life encouraging **self-built sustainable projects**, **educational community** with strong principles.

Currently, the Ceuvel center is isolated and is only accessed along the water or by pedestrians through the narrow Korte Papaverweg. In the proposal for the strategic site, **the entire area becomes more inviting**. The **ground level is left open towards the proposed parks and the water**. It is used by the community for its **self-organized activities**, such as concerts, sports events that use open public spaces, both mineral and green.

The industrial neighborhood has a **mineral appearance**, while the garden cities are strikingly greener. **By leaving the ground level empty, it becomes a public park that opens its squares towards the water and the inspiring view to the city**. Its connectivity with the surrounding areas is ideal through the proposed bridges, new metro line, pedestrian and bike lanes and the transport on the channel.





The proposal is thought of in stages.
Phase 1 | project site
Initial experimental development emphasizing the request of dialogue between housing+office modules, creative ground floor and continuous vertical circulation

The proposal is thought of in stages.
Phases 3+4 | project site + conquering the waterfront

The proposal is thought of in stages.
Phases 5+6 | strategic site born through housing+office modules+ground floor global container of creative activities, interlaced mineral+green public spaces and direct relationship with the waterfront and the inspiring view of Gemeente Amsterdam



The proposal is thought of in stages.
In the first stage, a metallic structure is built around the existing buildings that are to be kept. In the next stages it will occupy the entire strategic site. Even though it develops organically, along with the need for more residential spaces, through the masterplan, it is ensured that areas are left unoccupied for public plazas and green spaces that are open towards the waterfront.



The containers around the water have a **flexible use** and can be utilized according to the needs of the residents. For the residents, these are spaces in which they can **express their creativity**.

development and conceptual inspiration

the existing industrial space represents an inspiration and starting point for the creative community of Amsterdam; furthermore, the development of De Ceuvell, its free spirit and artistic potential represent a starting point for the proposed community; the tridimensional matrix represents a spatial reinterpreted De Ceuvell in terms of experimental housing, individual and collective working spaces



● Plan with ground floor of apartments + offices

● Plan with upper floor of apartments + offices



APARTMENT NO 1
BASIC AMENITIES | 4 BEDROOMS
FIRST FLOOR VIEW



APARTMENT NO 1
BASIC AMENITIES | 4 BEDROOMS
UPPER FLOOR VIEW



APARTMENT NO 2
BASIC AMENITIES | 3 BEDROOMS
FIRST FLOOR VIEW

