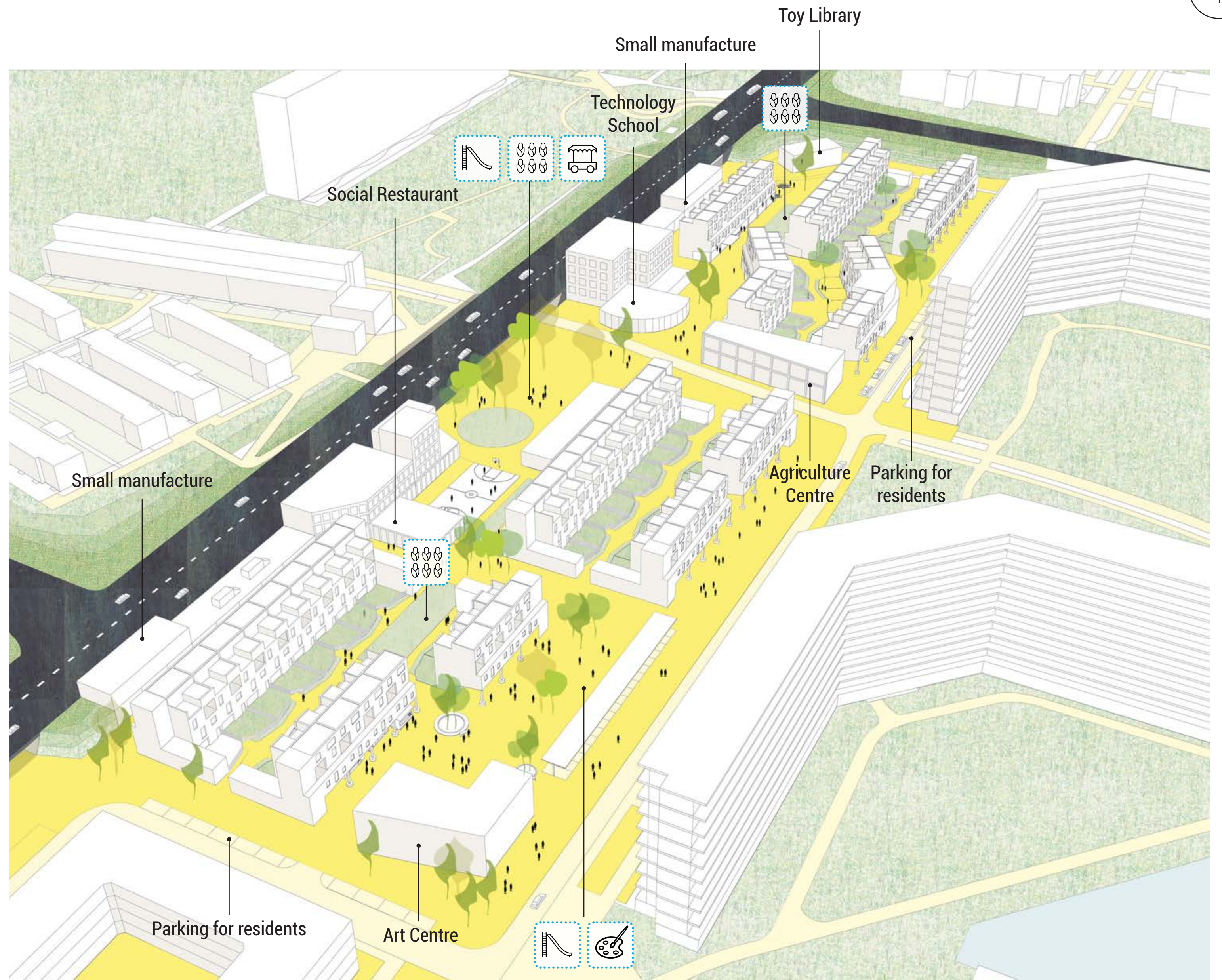


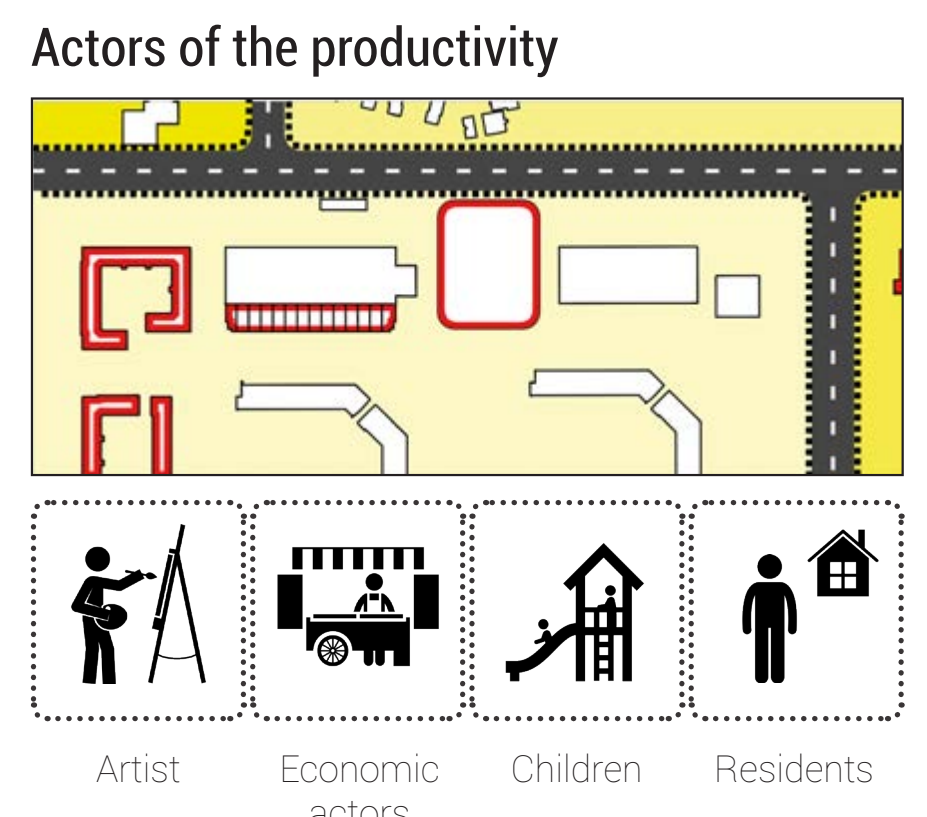
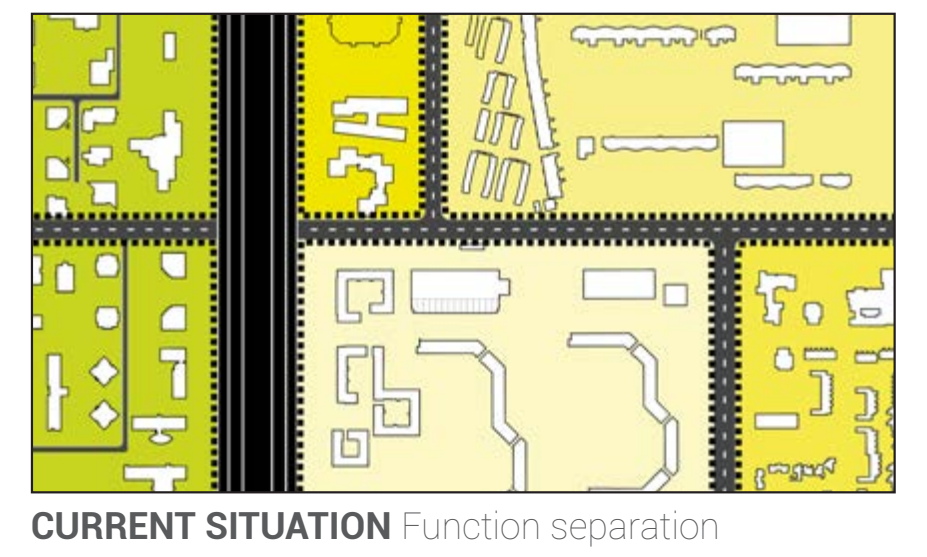
H-BUURT

Machi-zukuri

Bijlmer is affected by a lack of connectivity and interaction, a defined structure to bring an efficient social and economic productivity. It could be explained by the cutting structure of the planning leading to a city where "nothing happens". People move out once their social situation improves. The issue is to resolve the question of how to attract people in H-Buurt and how to make them stay. Because H-Buurt is facing a lack of dynamism, the project aims to bring back gradually people on the site by using the existing potential of the site. Machi-zukuri is a Japanese urban concept to define a planning method involving the community. In H-Buurt, some local events could be noted such as creative interventions (street art, artist collective), a small economic development by low-skilled workers, a will from its inhabitants to create a multicultural identity (association). That is the starting point of the productivity.

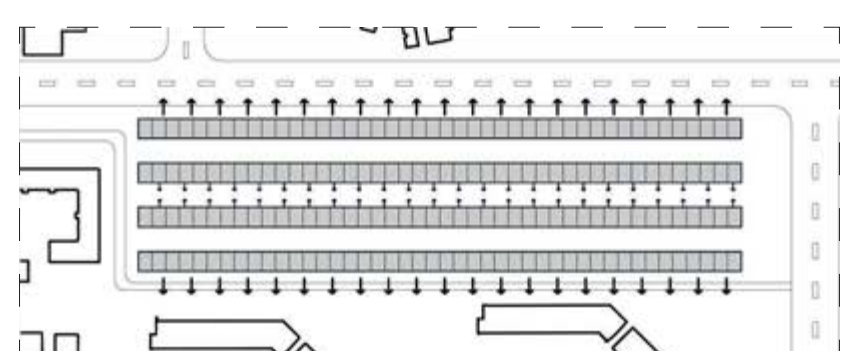


- Playground
- Urban Agriculture
- Art exhibition space
- Market

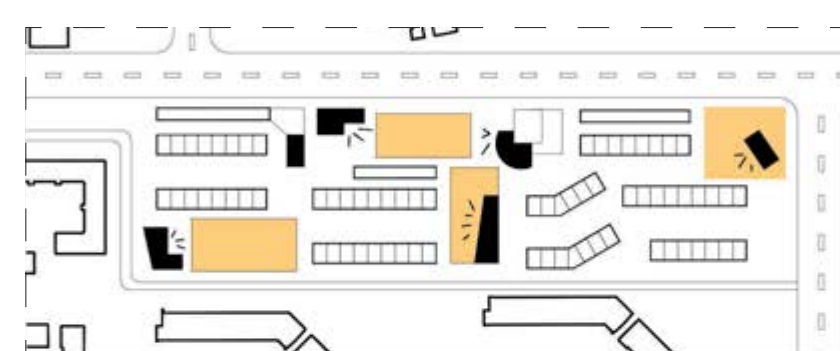


Strategy

Development



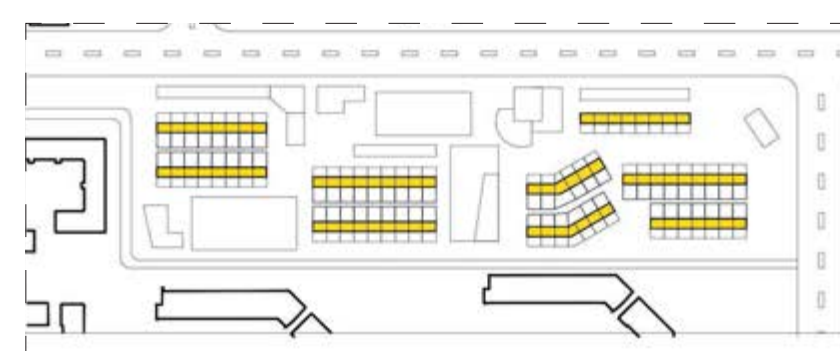
1- LINEAR DEVELOPMENT TO HIERARCHY
To resolve the scale confrontation implied by the two urban conditions: the road infrastructure and H-Buurt



2- PUBLIC SPACE AS A GLUE OF PRODUCTIVITY
Public building, Agriculture, Playground, Art Space as a Catalyst

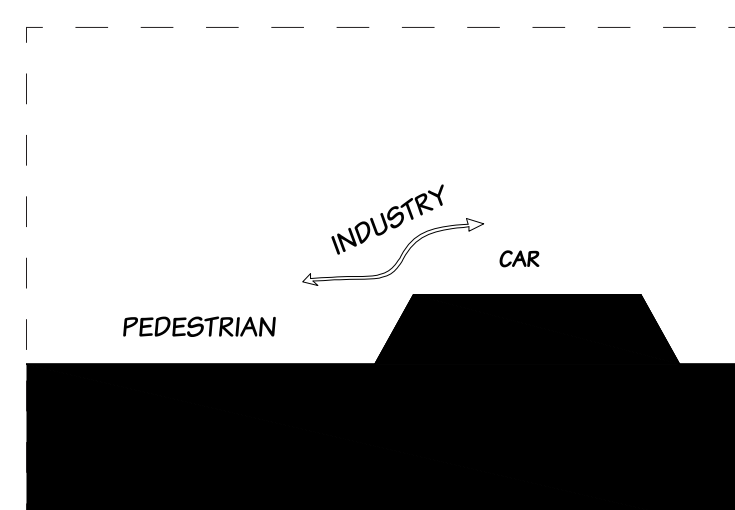


3- INDUSTRY AND INFORMAL ECONOMY Along the street. Streets are not anymore only a transport but an element of the catalyst

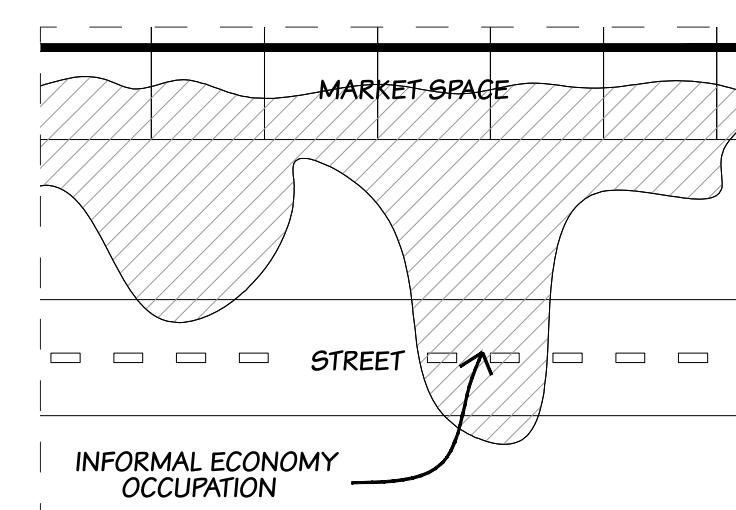


4- HOUSING Introvert development of housing to preserve privacy and to create a strong social identity

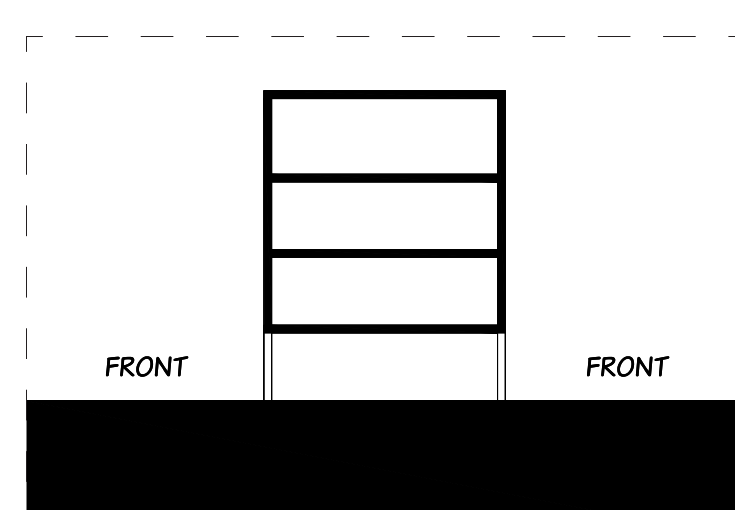
Principles



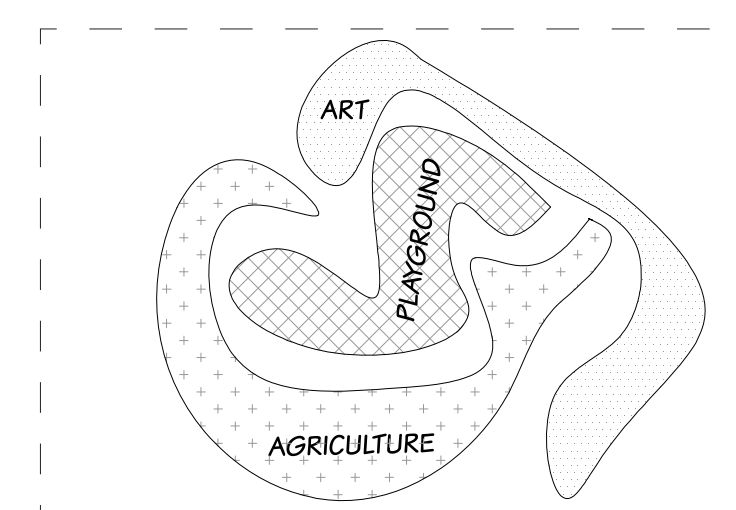
INDUSTRY GRAFTED ON THE INFRASTRUCTURE Use the infrastructure as an element of productivity



CREATE A PRODUCTIVE STREET Develop an architecture capable to receipt informal economy

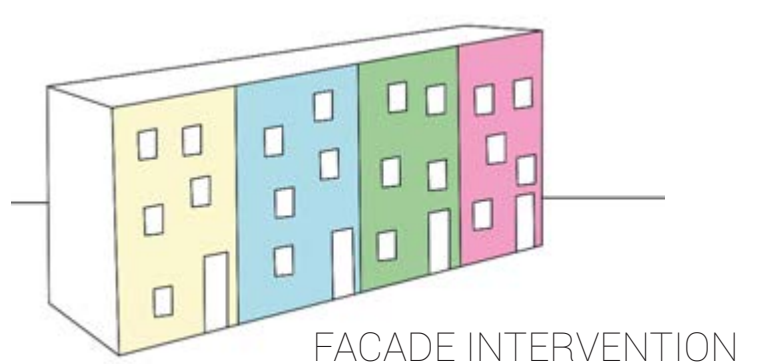
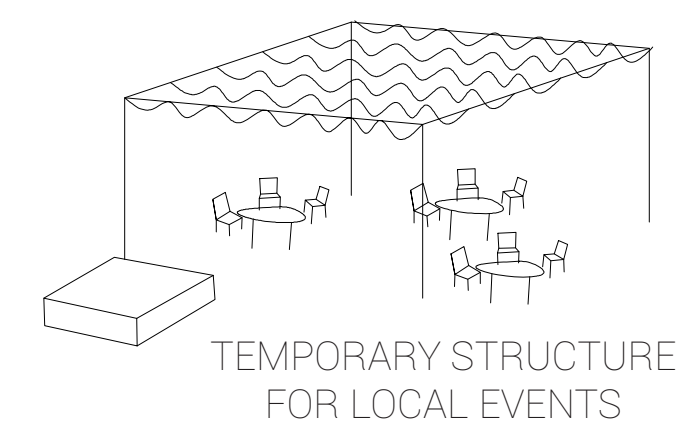
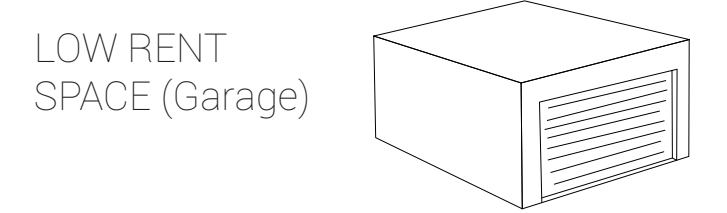
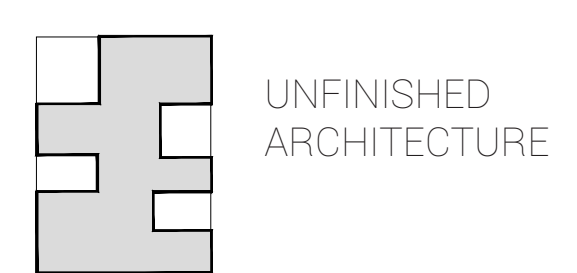


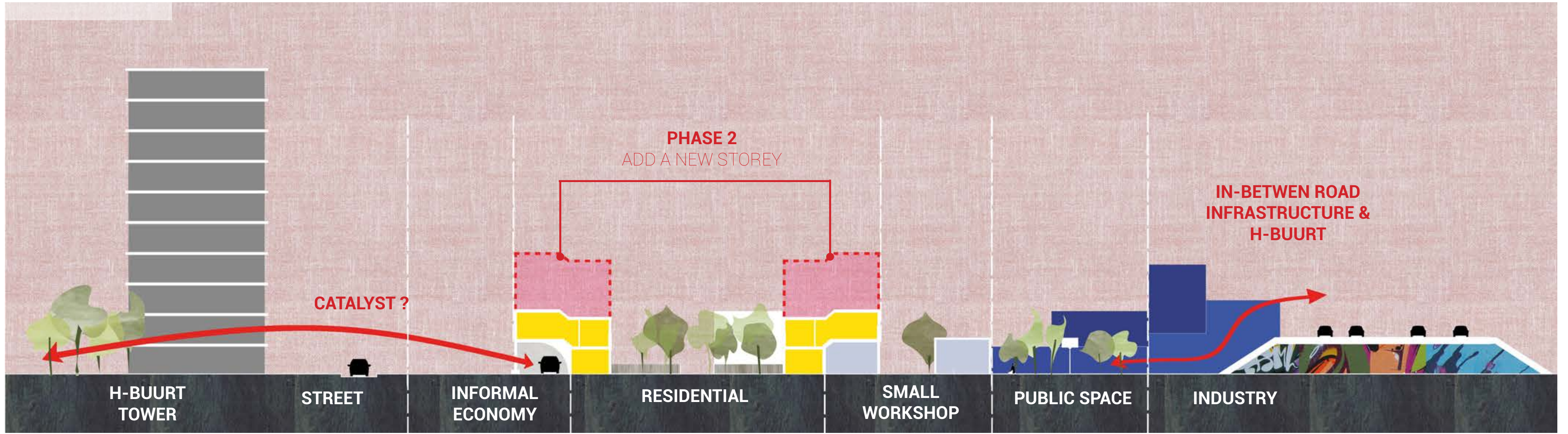
PRODUCTIVE DOUBLE-FACED ARCHITECTURE No Front-Back but Front-Front



IN-BETWEEN PUBLIC SPACE Capable to receipt public gathering, agriculture activities playground

Temporary structure



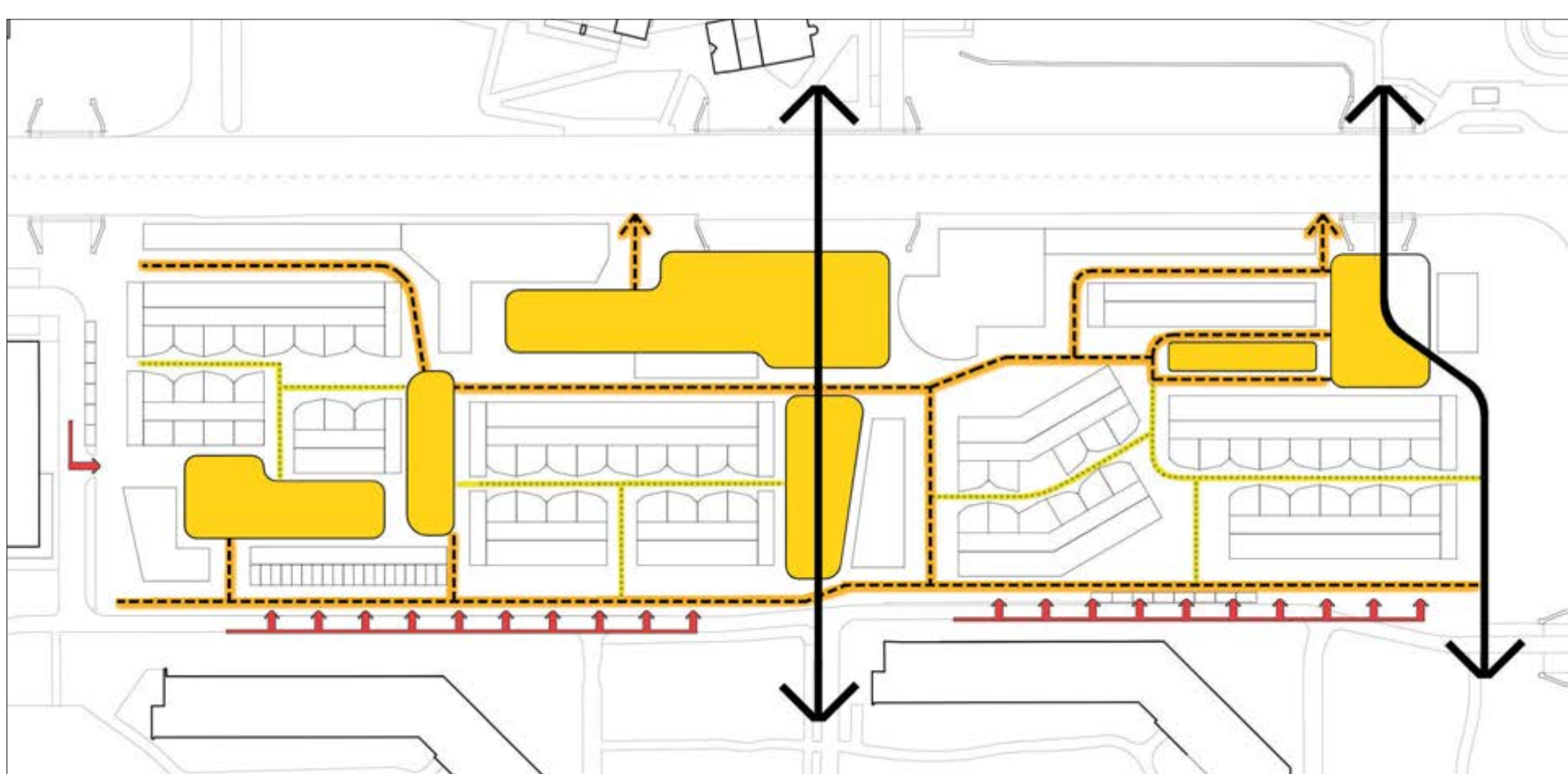


CONTEXTUAL SECTION

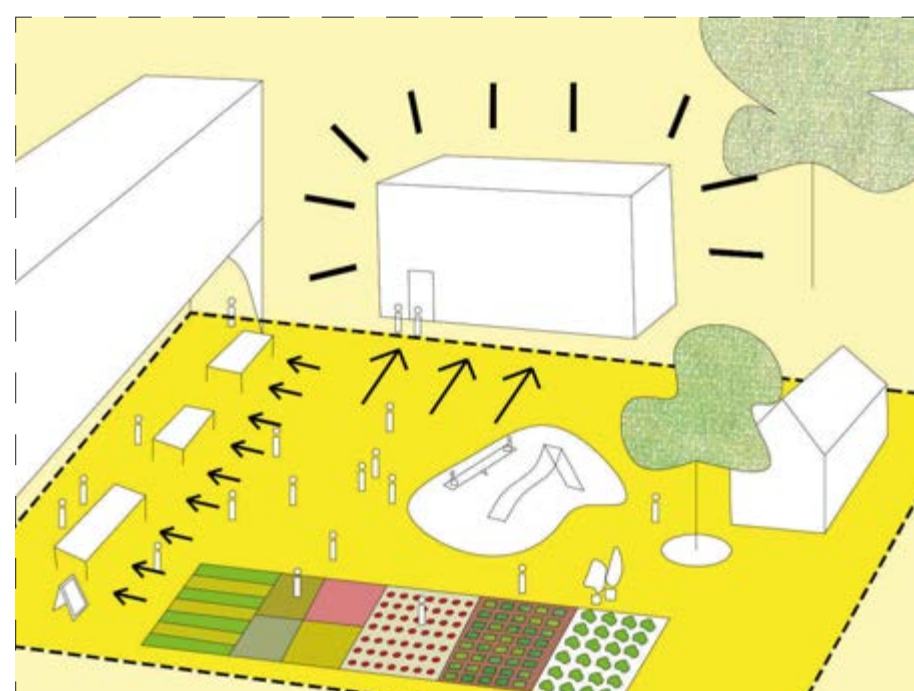
SCALE 1:300
3M
6M



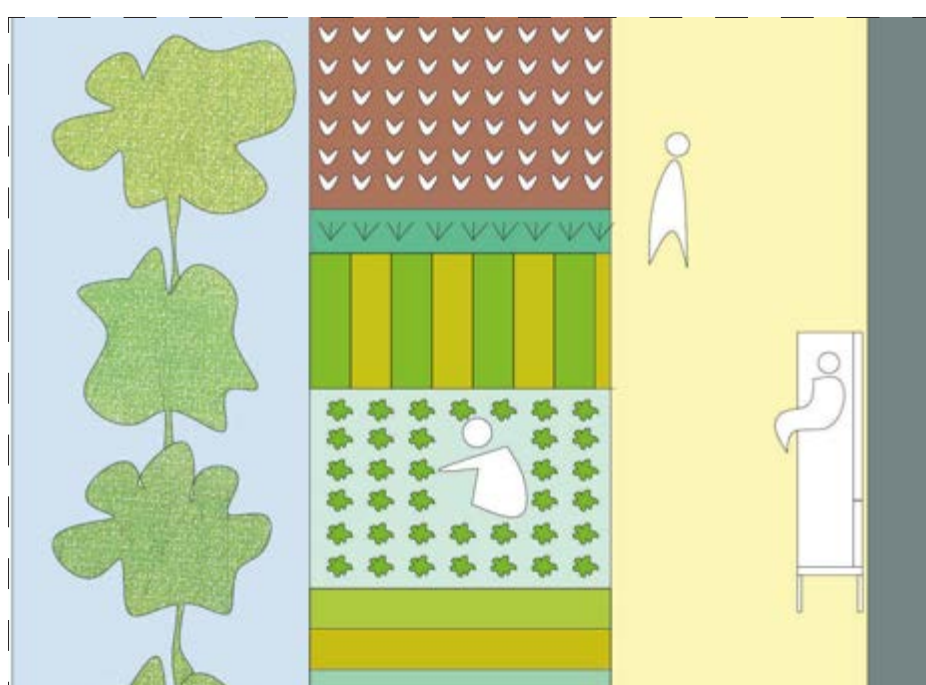
M Productive public spaces and streets



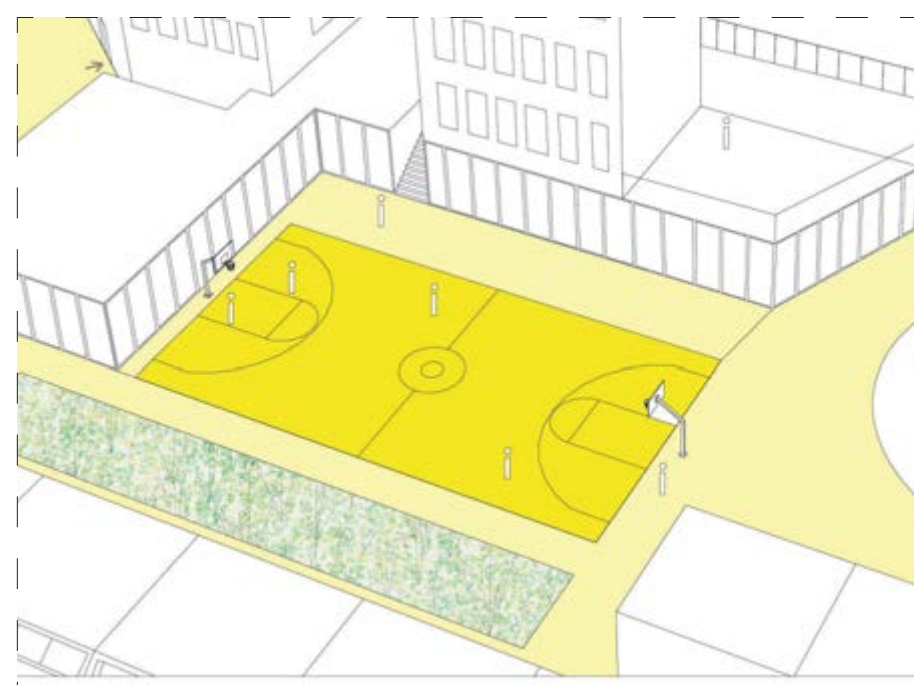
FRONT GARDENS To create a strong social cohesion



PUBLIC SPACE = MARKET + AGRICULTURE + PLAYGROUND + ART EXHIBITION



AGRICULTURE ALONG PUBLIC STREET



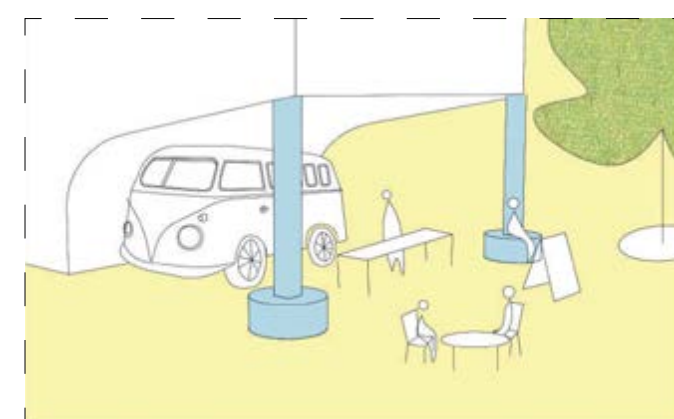
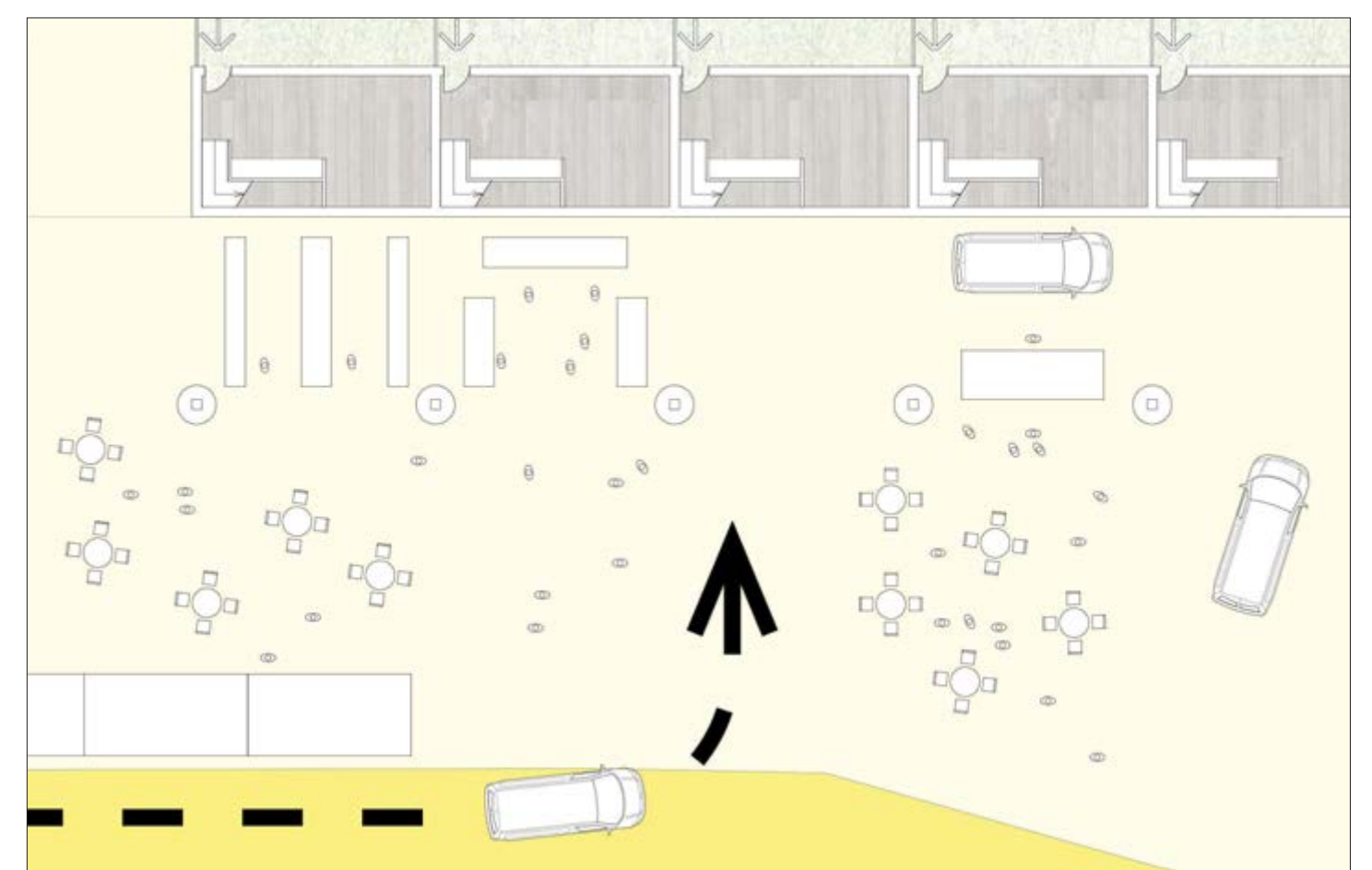
PLAYGROUND INJECTED THROUGH ALL THE SITE

XS Informal Economy

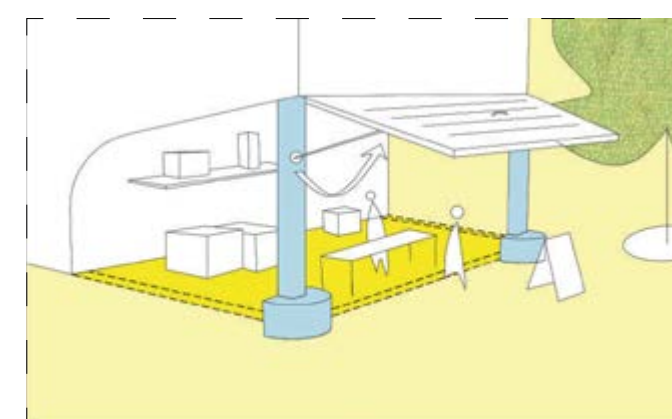
PARKING SPACE An architecture capable to receive informal economy.

A parking space has the advantage to be low cost. The space can be rent by low-skilled workers to developed their activities. As the city evolves, those activities will turn stable and be fully integrated to the architecture.

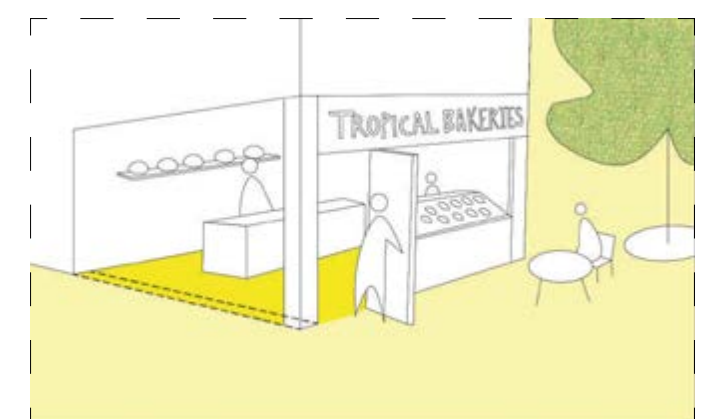
SCALE 1:200
2M
4M



FROM PARKING SPACE IN THE PUBLIC SPACE...



TO A PRIVATE GARAGE...

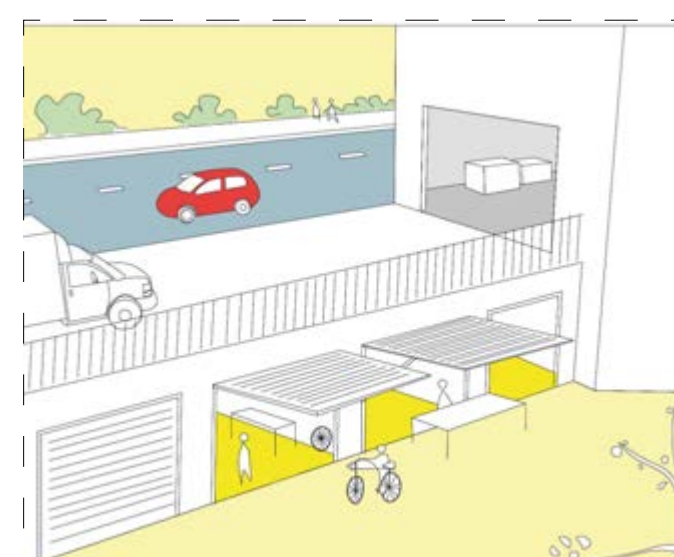
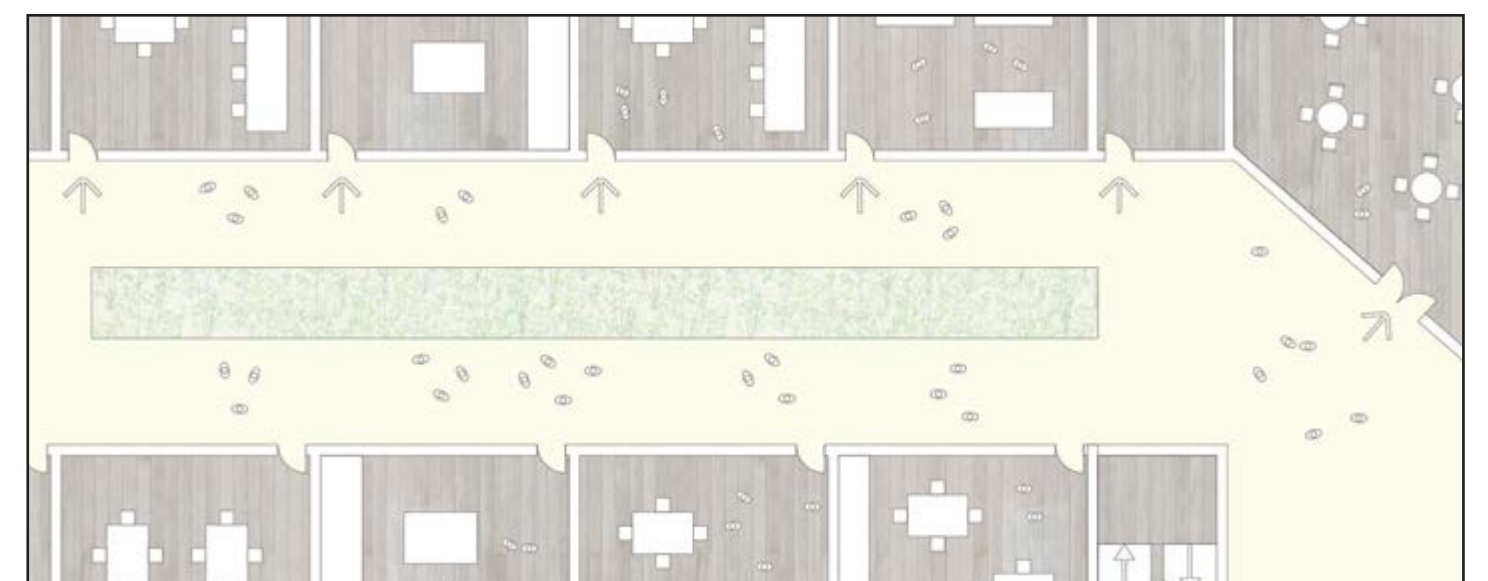


TO A REAL SHOP!

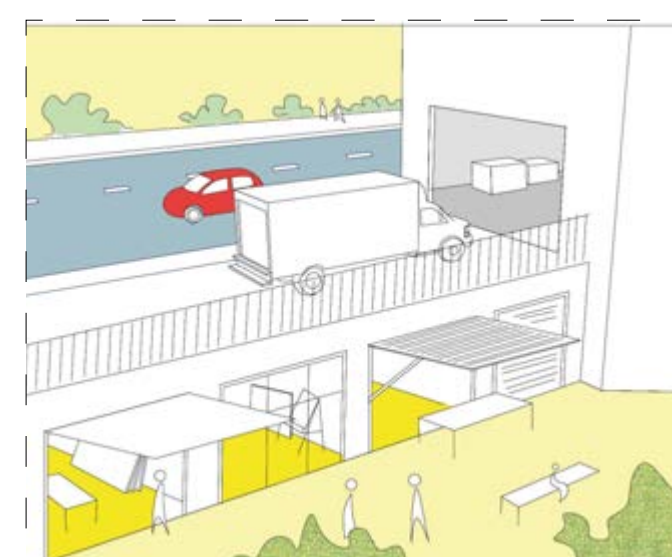
SMALL GARAGE to promote local activities, workshop, small manufacture ...

All the garages are organized along a pedestrian street to create a social cohesion with activities such as urban agriculture.

SCALE 1:200
2M
4M

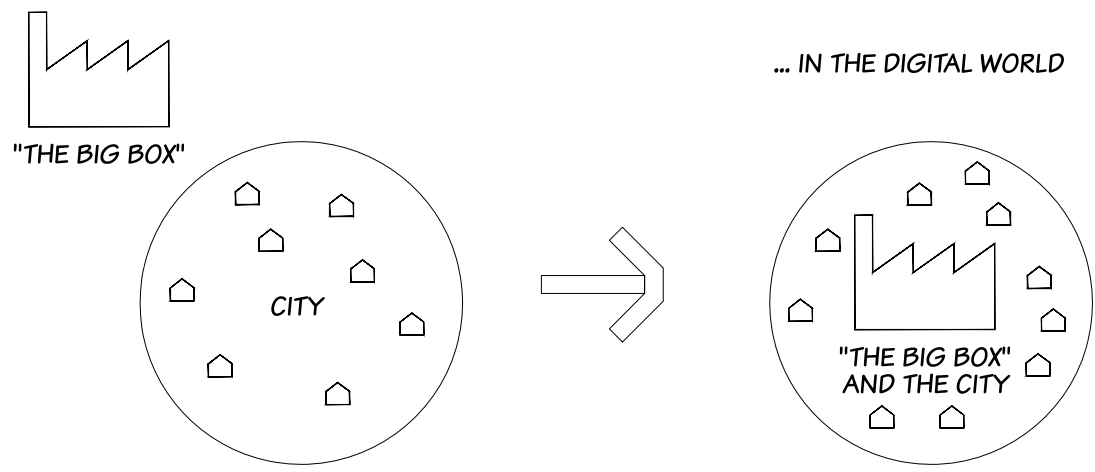


A USER CAN TURN AN UGLY LOW COST GARAGE TO A BEAUTIFUL WORKSPACE

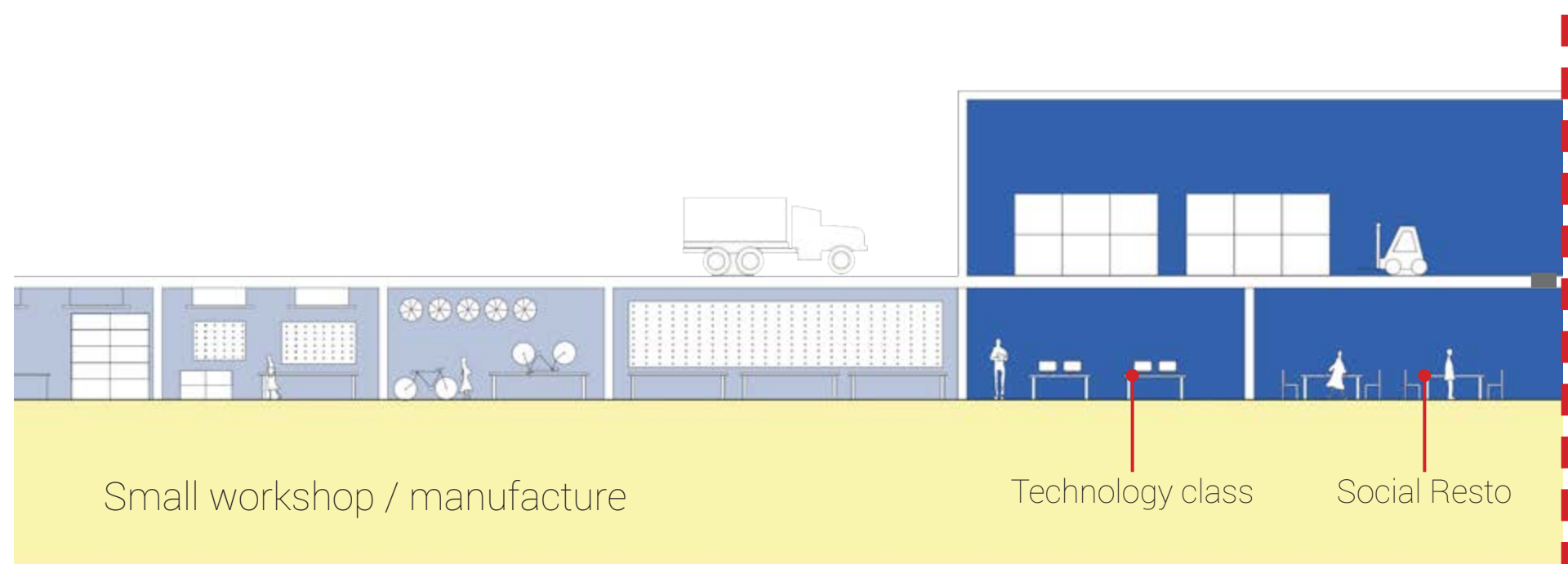
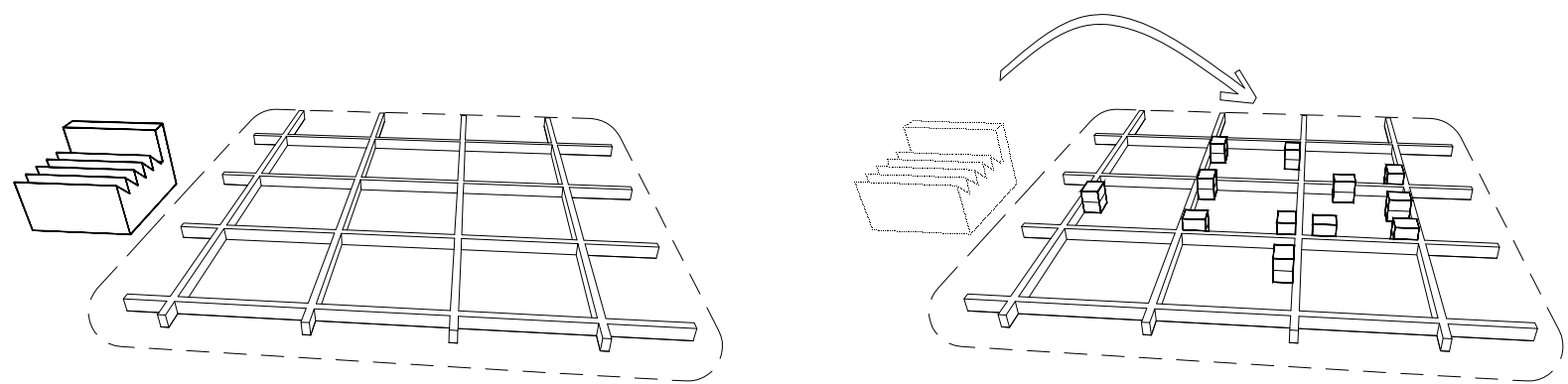


S/M Industry & Manufacture in L Infrastructure

If the traditional planning uses to reject industry out of the city, the new planning needs to include the production into it. The project draws a strategy to transform the road infrastructure to a positive element of the productivity by grafting industry along the road.

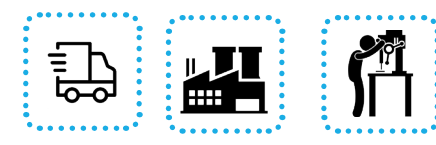


In H-Buurt, the infrastructure becomes an element of productivity.

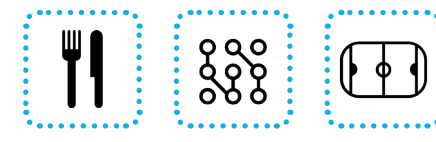


Industry is still connected to the infrastructure for transport and delivery.

TRANSPORT & WORK LEVEL

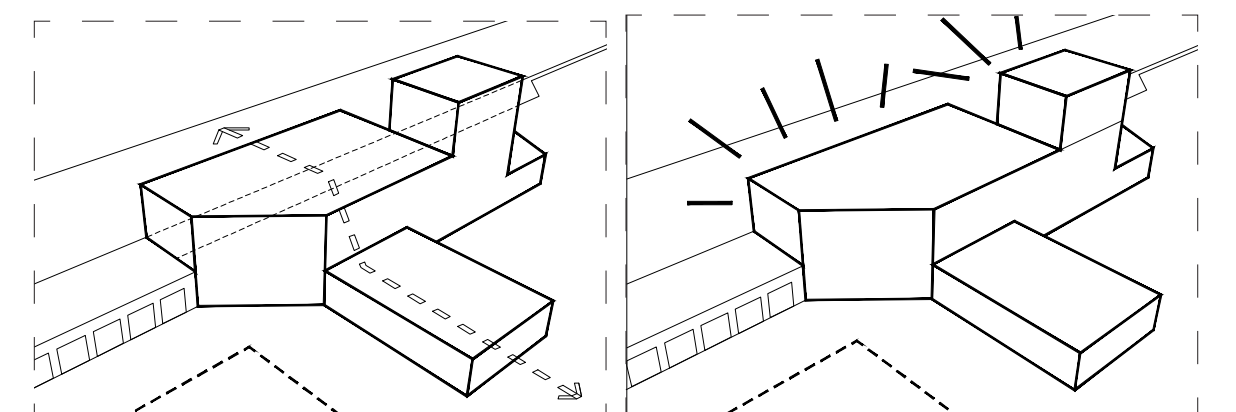


SOCIAL LEVEL



Workers are involved socially in the life of the city. Moreover, they have access to city facilities. In the digital era, work is constantly more specialized. The city could offer them the chance to learn and to develop their skills.

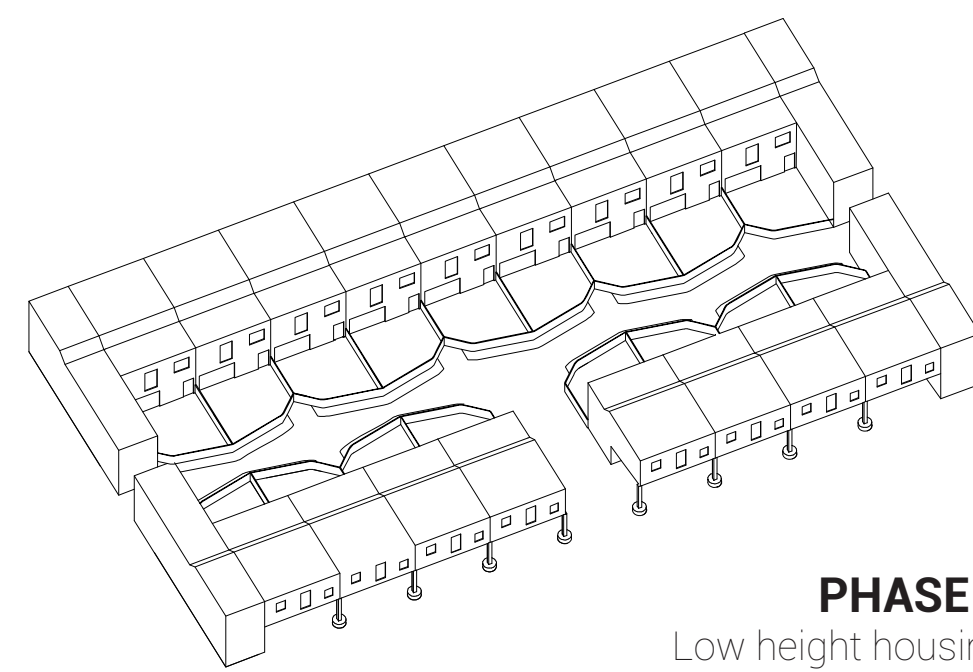
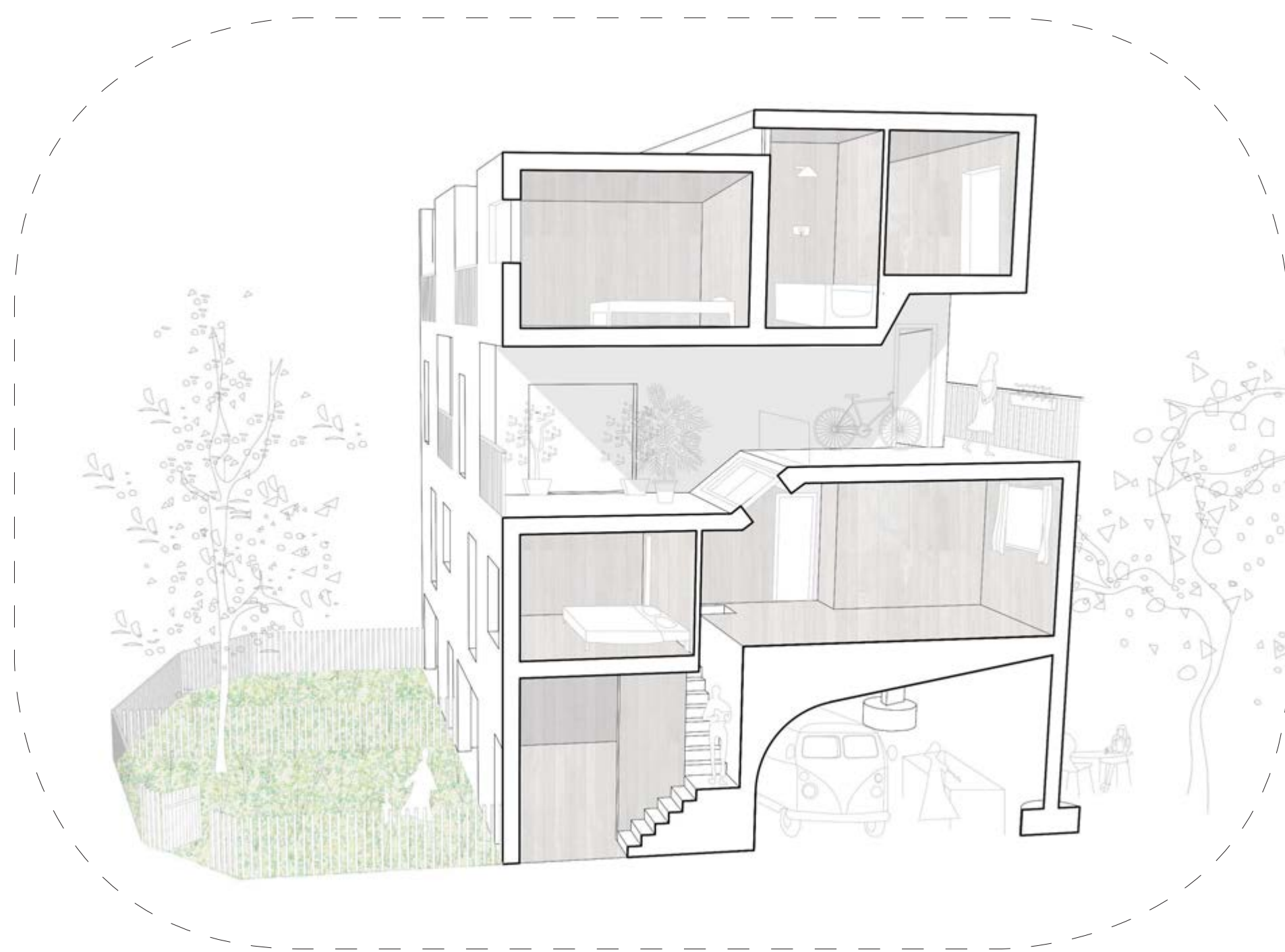
INDUSTRY AS AN URBAN CATALYST



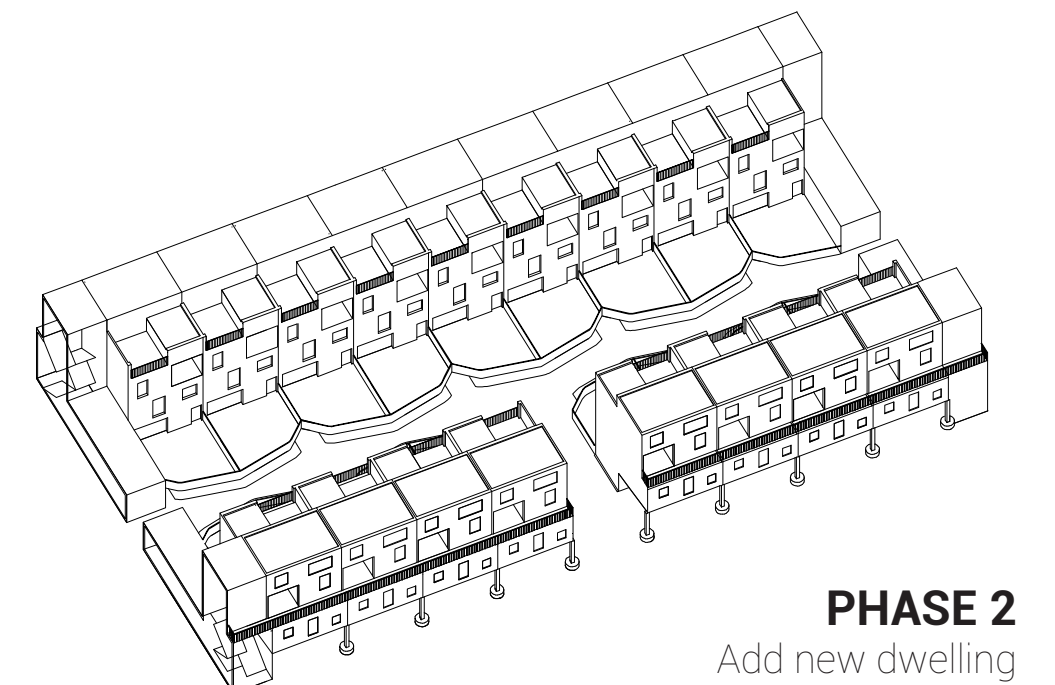
Link infrastructure-H Buurt

Landmark

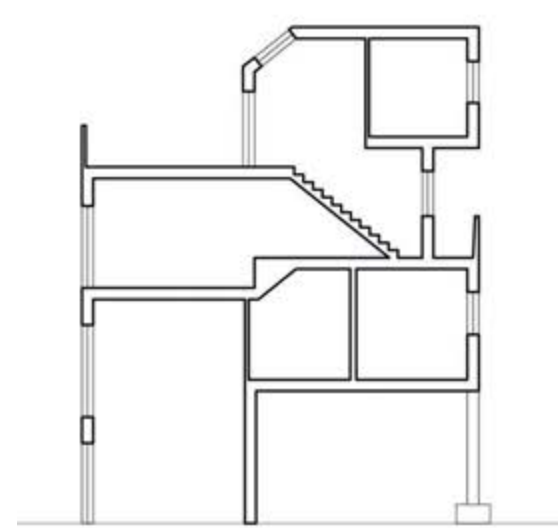
Flexible House - Capable to change over time



PHASE 1
Low height housing



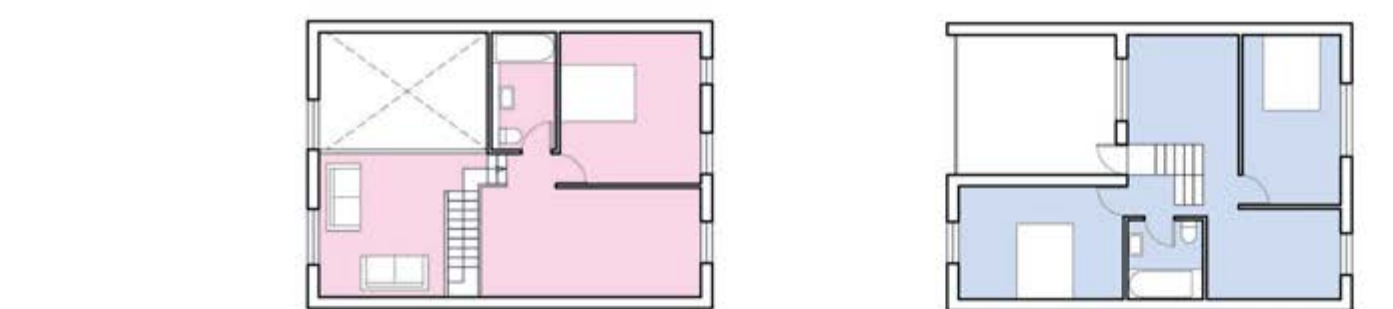
PHASE 2
Add new dwelling



SECTION BB

SCALE 1:200
2M
4M

Faced to a low demographic expansion, only a fair amount of housing is injected on the site in Phase 1. A demographic growth will happen only if H-Buurt evolves socially and economically. It will then enter in Phase 2. Because time changes needs and habits, housing is flexible to add new space or to change the spatial configuration.



PHASE 1

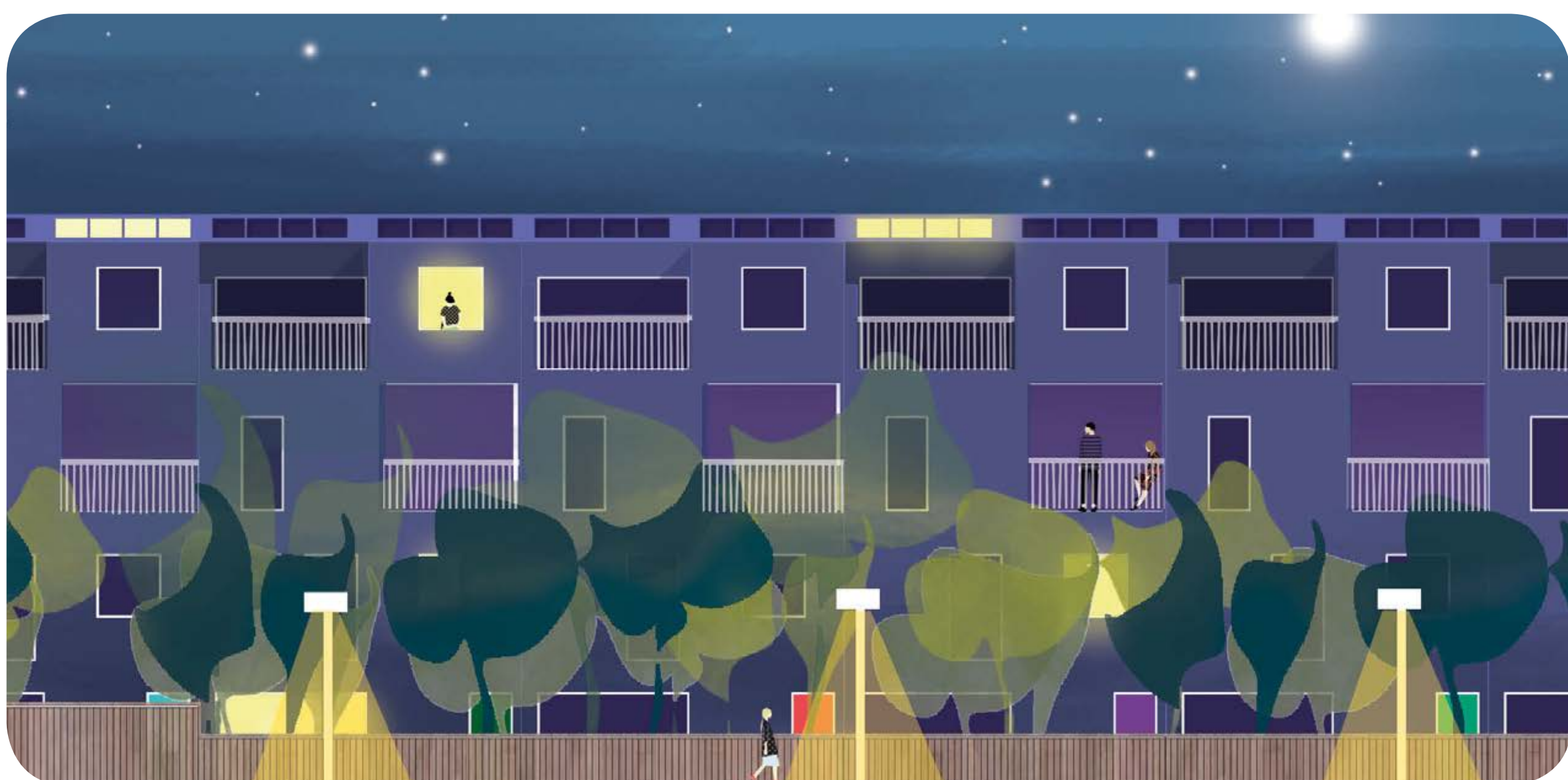


PHASE 2
Add new dwelling



PHASE 3
Space to colonize

SCALE 1:200
2M
4M



HOUSING ELEVATION

SCALE 1:200
2M
4M