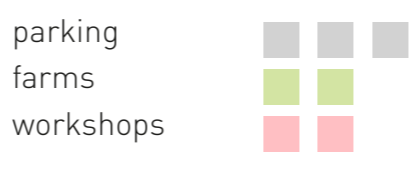


STRATEGIC SITE
 Area H-Buurt is situated quite far from the city center, but has good transport connections with the rest of the city by public transport and cycle path, which goes through the project site. And also this site works as connection to Nelson Mandela Park.

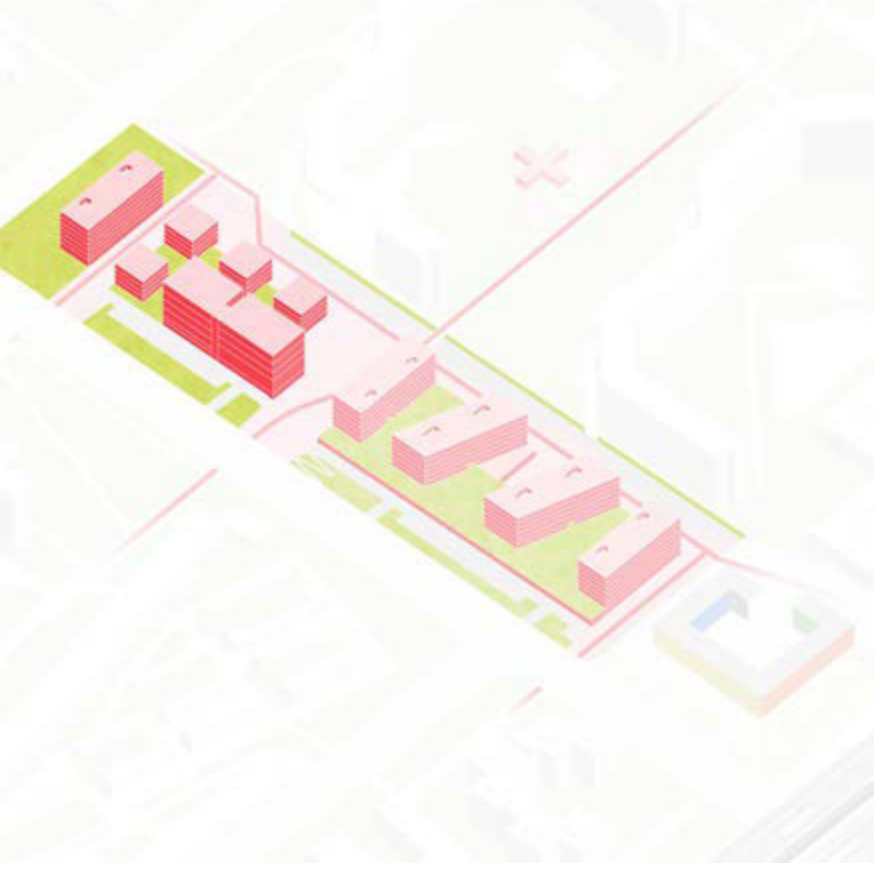
To stimulate people to visit park, we created energetic centers along the main pedestrian path to attract people to go a bit further and further forward to park.



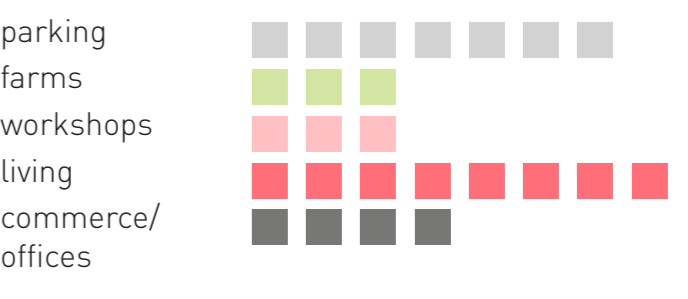
PHASE 1
 The goal of first phase is to create stronger social connections in existing neighbourhood. Creating new possibilities for interactions between people for achieving the same goal, works good for this purpose. Such interactions can be proposed in farms, placed on roofs of existing parking buildings, or in workshops, placed near the smaller parking building along the way to the park.

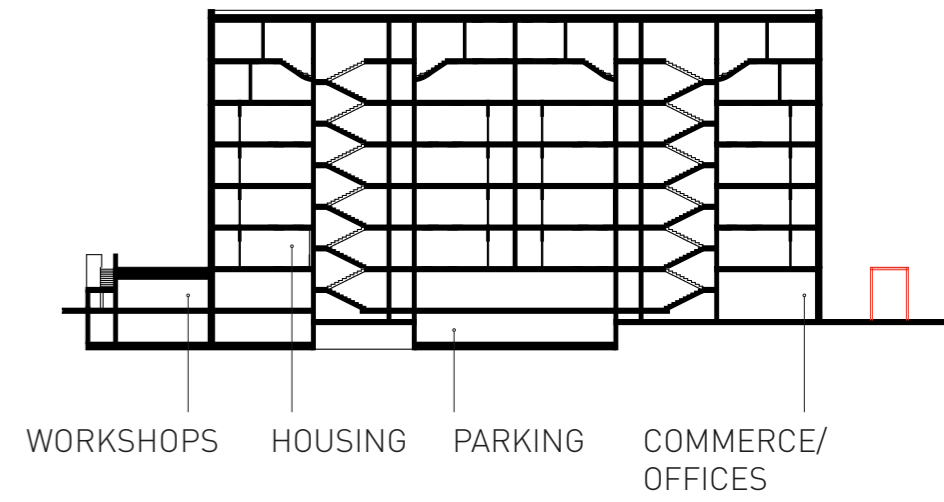
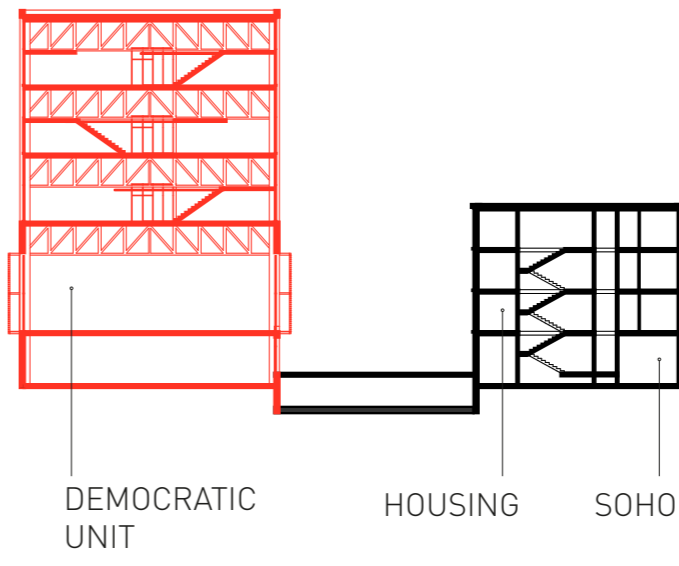
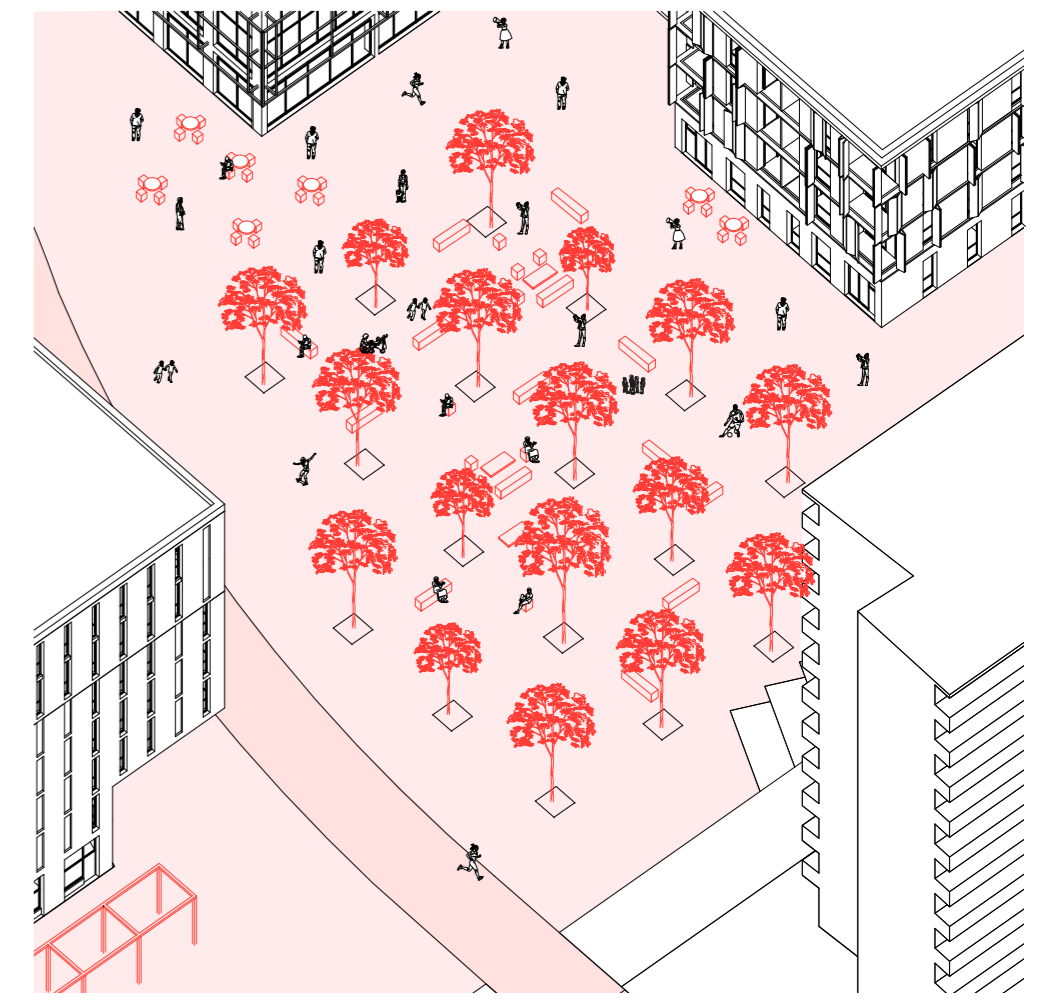
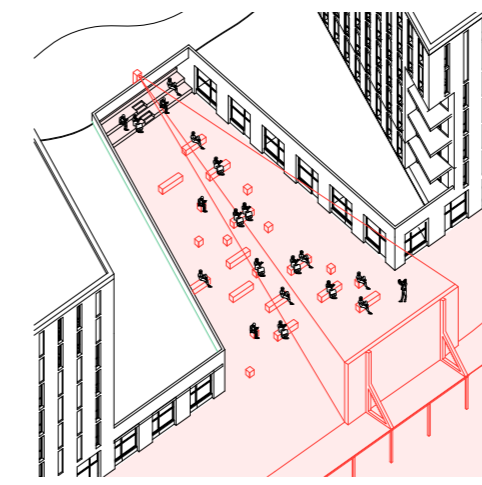
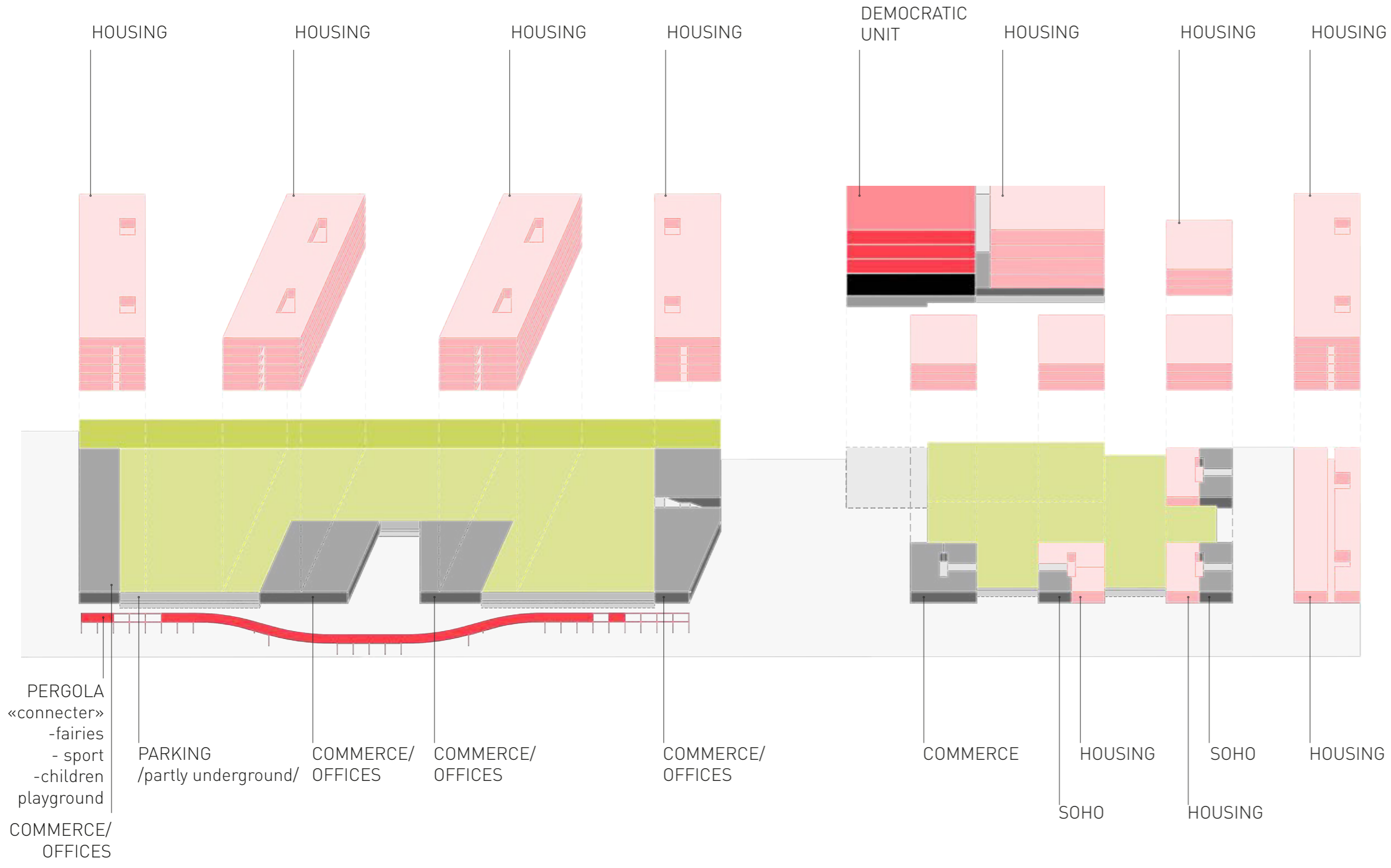


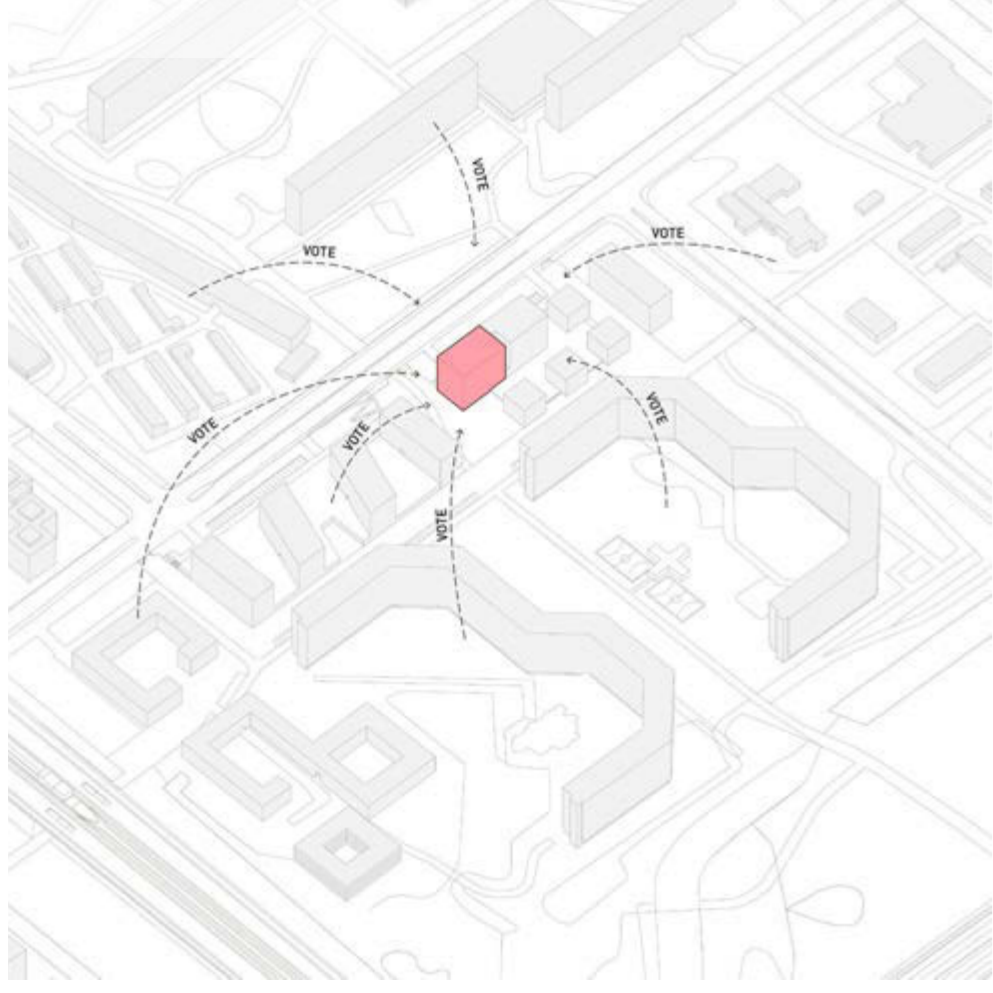
PHASE 2
 At the second phase we create a better place for communication inside of the neighbourhood and new possibilities for interactions. As new, wider pedestrian path with different kinds of activities. The new complex of buildings offers new dwelling units for different groups of people: flats for rent and small units, to attract younger people, bigger flats with 2-4 bedrooms, for families. It also offers commercial and small office spaces. And quite important, that it saves farm and create new spaces for workshops and other small production, but for this time these functions are hidden from main pedestrian way.



PHASE 3
 At the third phase of transforming this area for better neighbourhood, we add new typologies of living spaces and create new public spaces outside and inside of buildings, where we give freedom to neighbours to choose what functions they really need here. But also idea of this phase is to create better connections not only inside of our neighbourhood, but also to make better connections with the rest of the city, by creating emphasises on bicycle and pedestrian connections with other parts.







DEMOCRATIC UNIT

To create working neighbourhood we need to let them create their surrounding by themselves, that's why we created Democratic unit.
 This unit is filled all by people who live in this area, and people choose what they need here and what they want to see nearby.



People only need laptop with internet connection to decide that they need inside of the unit.

