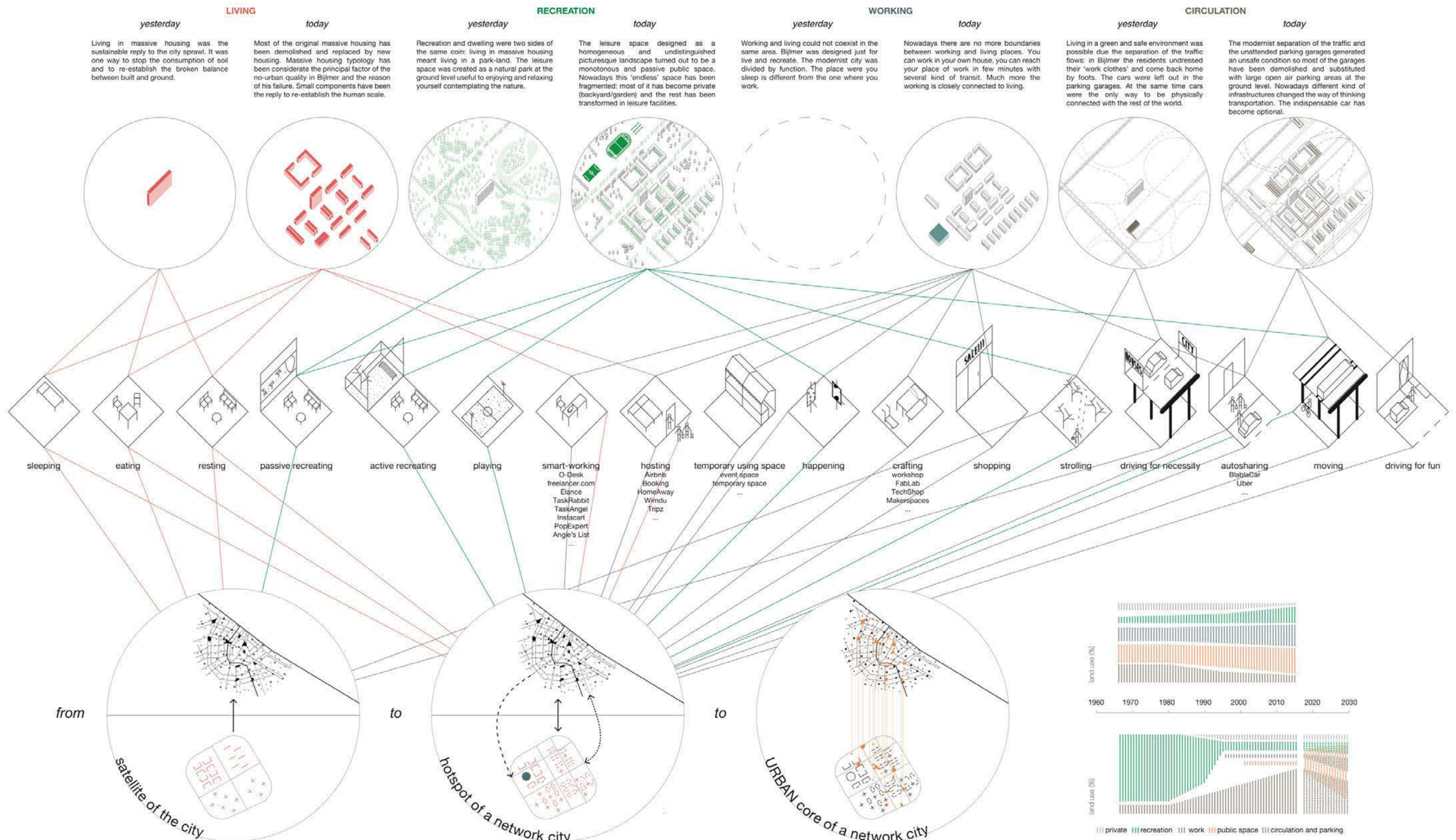


in between

HL051 Amsterdam H-Buurt (NL)

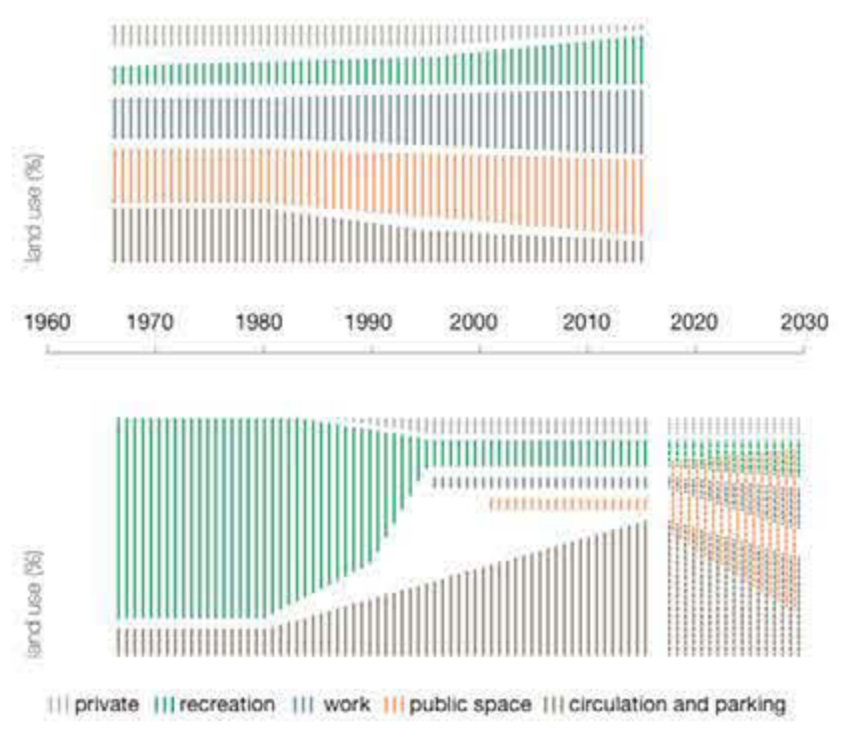
Bijlmer was a realized manifesto of the modernist way of thinking the city. It has also been considered as the concrete evidence of its failure. For these reason it has been changed in most of its parts but Bijlmer still aims to be an active part of the contemporary Amsterdam.



The large scale characterizes the modernist Bijlmer. It is a mono-functional and completely depending satellite of the city.

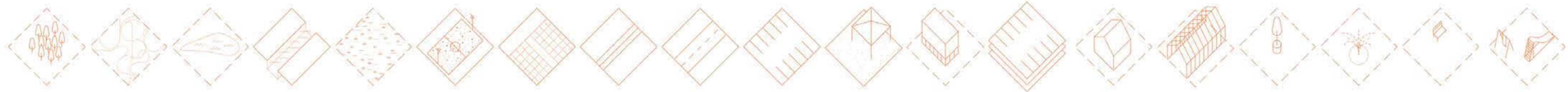
Due to the transformation process of the modernist district associated to the changing of the human activities and to the implementation of the connections between suburbs and city centre, Bijlmer can aspire to be a significant piece of the contemporary network city where there is no more centre and suburbs but different centres, where the different pieces collaborate to each other in a synergistic and ambivalent relation. However the urban renovation has approached the problems by the systematic fragmentation of the individual modernist components in a reduction of scale "mantra" way, some big commercial single spot activities has been inserted. Overall there was quite completely overlooked an important work for the cohesion between the urban pieces.

Bijlmer still can be an active piece of the contemporary Amsterdam to reach this achievement it has to look at the "mother piece": the historic city. The city centre of Amsterdam has many of the characteristics of Bijlmer: it has the same dimension, it has a different scale building it has leisure space and it is well connected to the outside; but it has more: The Public Space. It works as a cohesion space between pieces, it ensure the well differentiated productivity of the city bringing opportunities. "It is the surface of the ground on which ambitions and impossibilities are (...) played out". Bijlmer needs Public Space to grow from a suburb into a city.

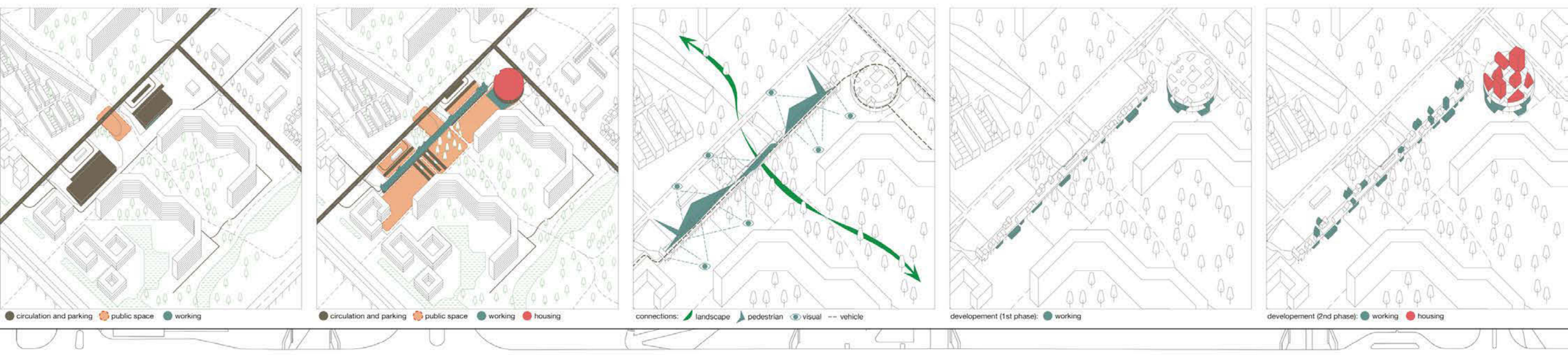


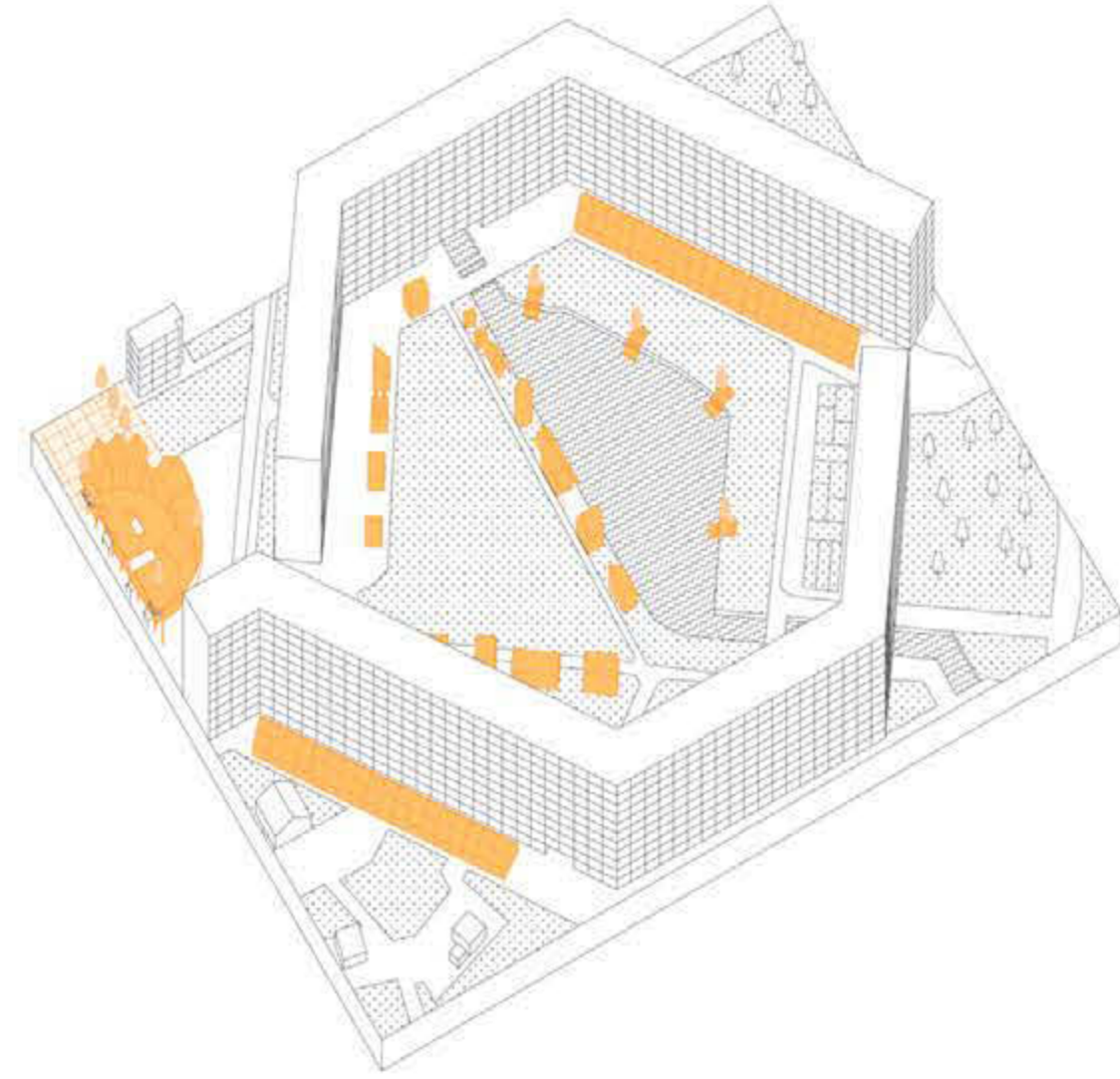
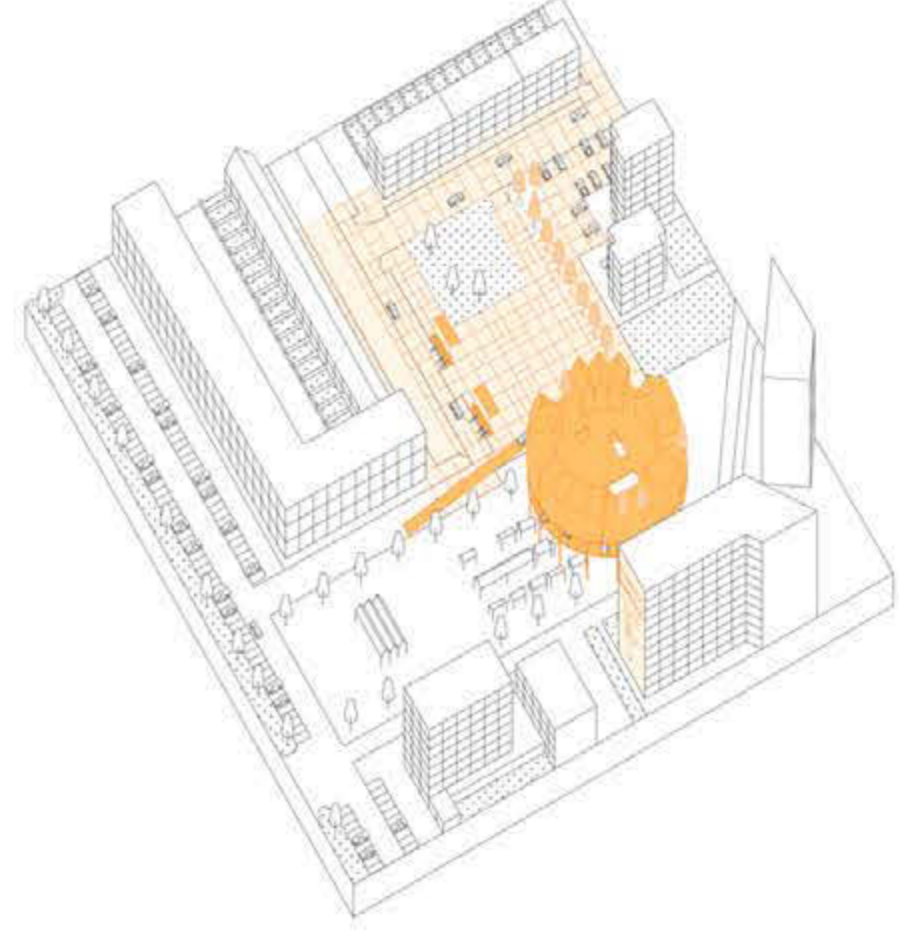
The land use in the historic city is well distributed between the different uses and it is quite constant during the time. In comparison the land use of Bijlmer is unbalanced and with some strong mutations during time. It starts as a mono-functional separation but it becomes something of more complex in the last tree decades. In the historic city the public space is strongly connected to the productive activity and to the recreational space. In Bijlmer it doesn't happen because public space is quite absent. According to the progressive decrease of the car need planned for the years to come it is possible to plan a progressive implementation of the public space in Bijlmer. It can be designed as a specific space capable of mixing function and erase boundaries between them were for example a parking lot could be assumed as active unity of the composition. This could be the way to design a space with specific urban rules capable of evolving together with the new urban needs.

To be productive Bijlmer needs public space. The elements that compose the public space are already in Bijlmer. They already solve single problem but they could do more. They can be composed in specific projects capable of activating opportunities.



The project for H-buurt aims to produce cohesion between the existing and the new. It defines a system of specific public spaces that amplifies the occasions of the area to be productive. The new buildings provide visual, physical, contextual connections and they mix old and new functions. They can grow together with the changings of the social and urban needs. Public space defines a collective identity of the area.





TOOLS

- Multifunctional overpass structure
- Hybrid designed natural elements
- Small-sized productive structures

GOALS

- To connect the waterfront with the new designed landscape
- To rethink the parking drawing as an element that can control the landscape design
- To make productive the new green public space for the dwellers of this district

TOOLS

- Mixed-use building
- Customizable skin for street artist
- Designed integrated paving

GOALS

- To create a landmark with a public covered space at the ground level
- To re-use the windowless facade of the modernist building as a support for artists
- To revitalize the spaces between "Isabella Richardstraat" and "Annie Romeinplein"

TOOLS

- Shared green houses
- Amenities

GOALS

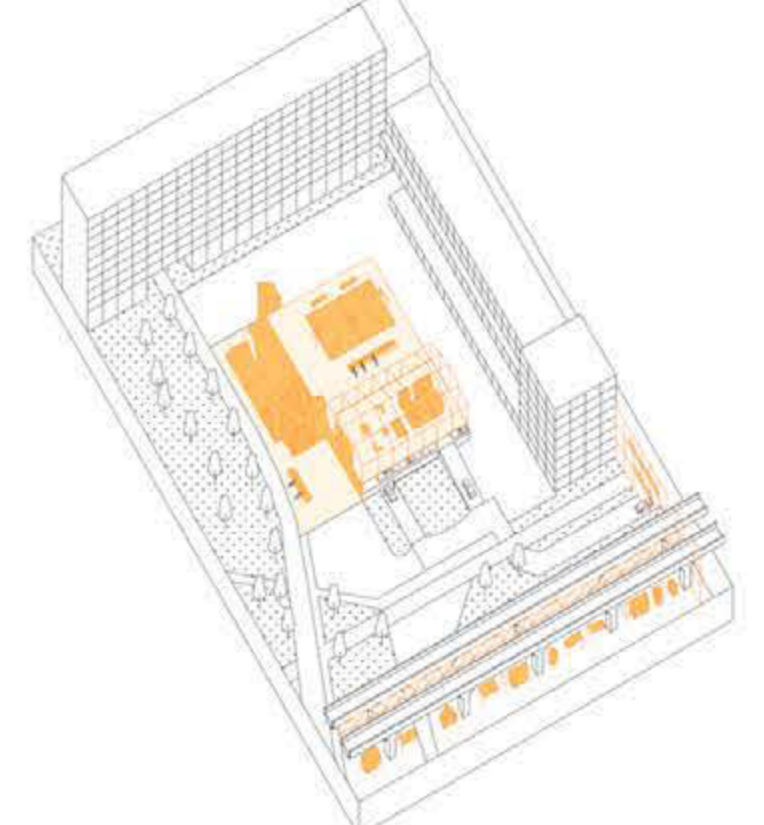
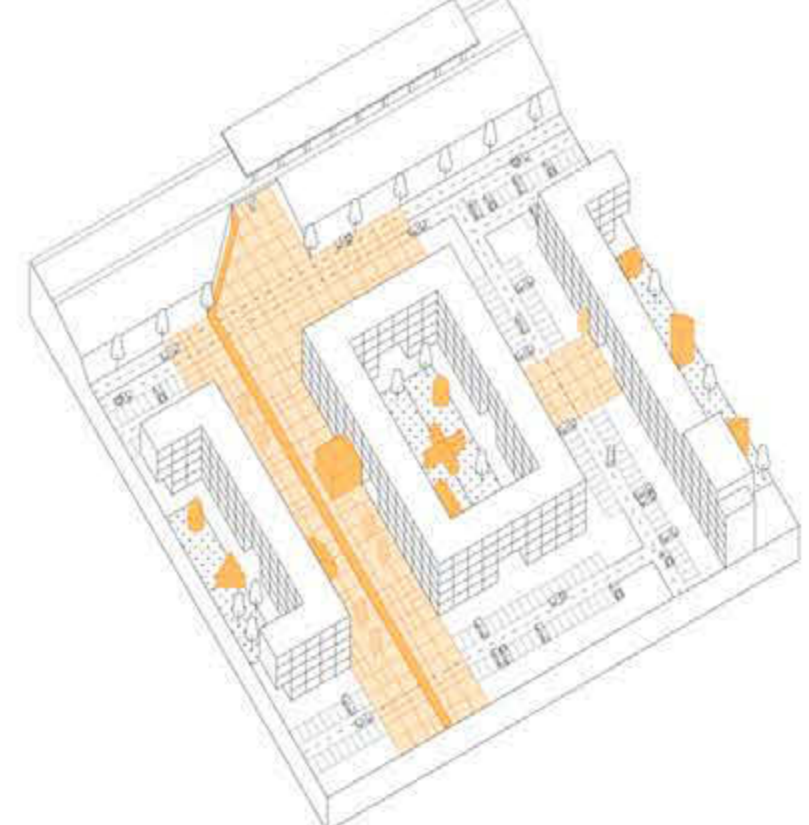
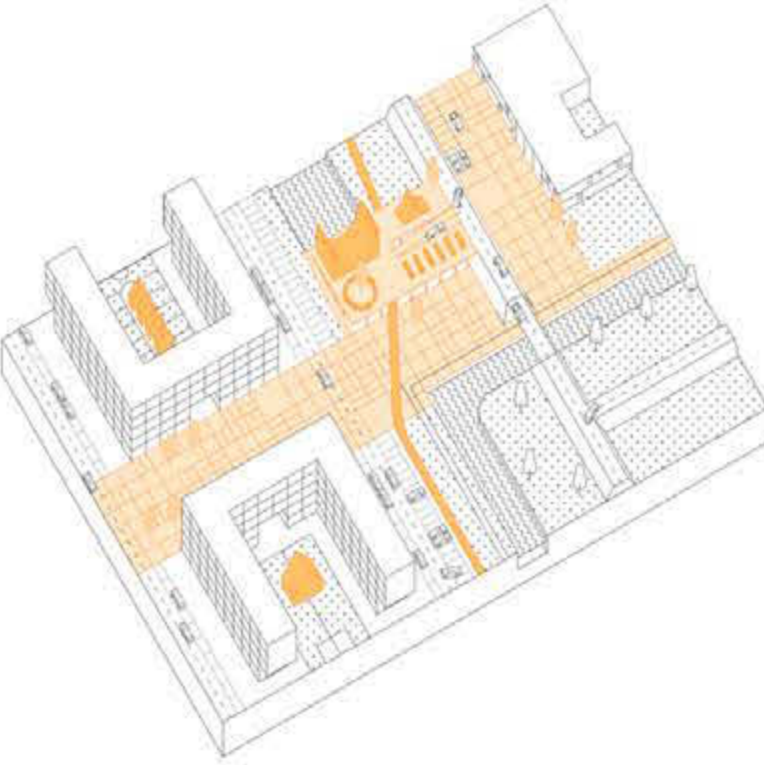
- To improve the existing urban agriculture in the "Gravenstein" court
- To get a hospitable place for everyone

TOOLS

- Designed integrated paving
- Re-designed integrated parking lots
- Renovation of one of the two levels of a multi-storey car park

GOALS

- To generate a unitary design to this area making punctual interventions
- To link the new productive areas which at the different levels



TOOLS

- Designed linear paving
- Multifunctional parking structure

GOALS

- To create a pedestrian axis between the "Standvielt" metro station and the "Drostenburg School"
- To give back the parkings removed from "Alfred Döblinstraat" integrating them with recreational facilities

TOOLS

- Designed linear paving
- Designed punctual paving
- Productive structures

GOALS

- To create a pedestrian axis between "Venserpolder" metro station and the re-designed waterfront along "Dostojevskisingel" street
- To activate the osmotic system of the courtyards underlying the existing gates
- To colonize the green areas into the courtyards making them public and productive

TOOLS

- Demolition of three floors of multi-storey car park
- Coverage of the outdoor parking
- Designed Surface that contains amenities, space for leisure and sport structures

GOALS

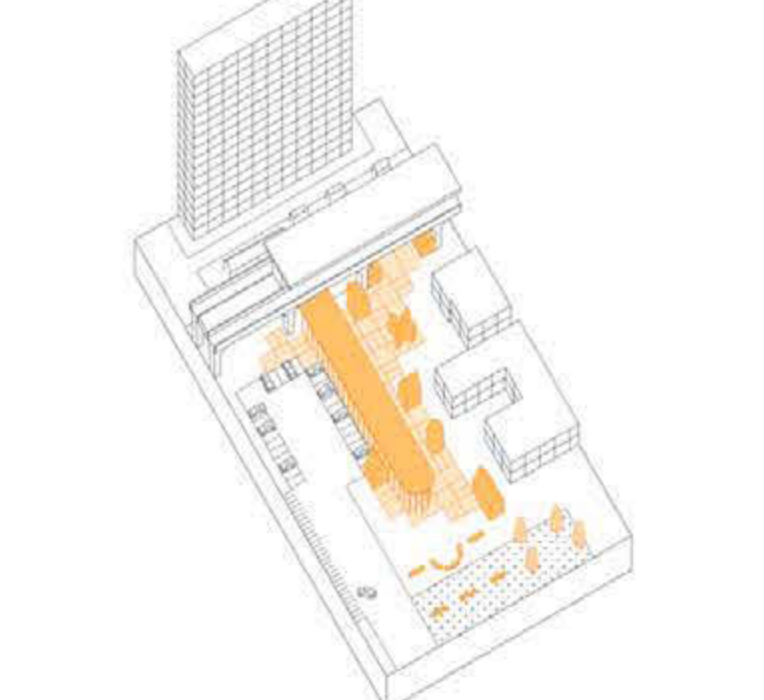
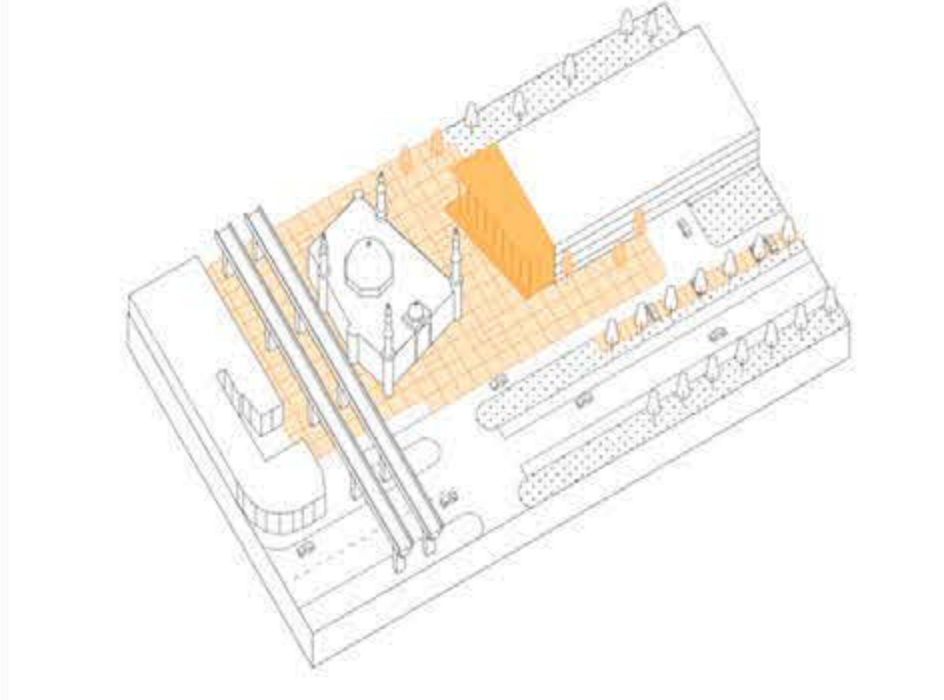
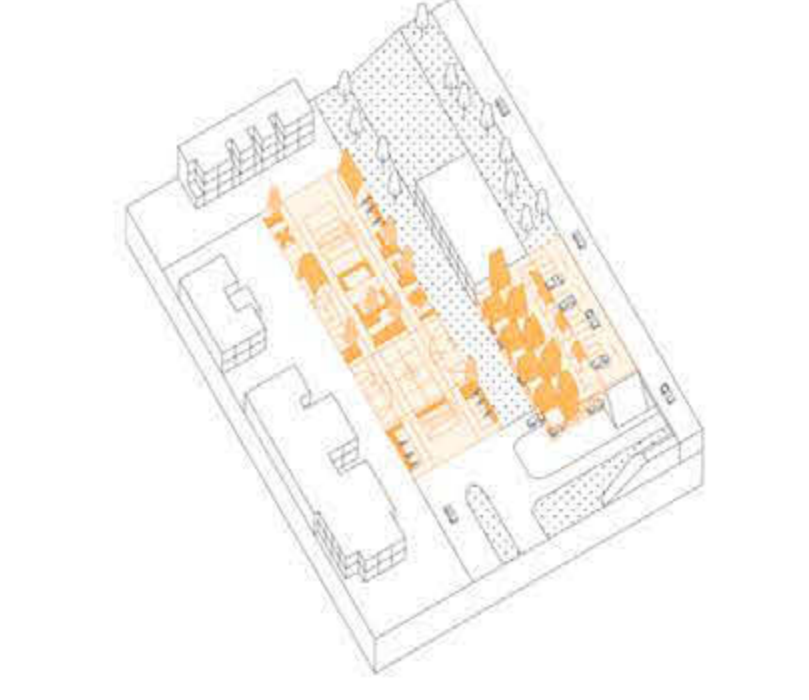
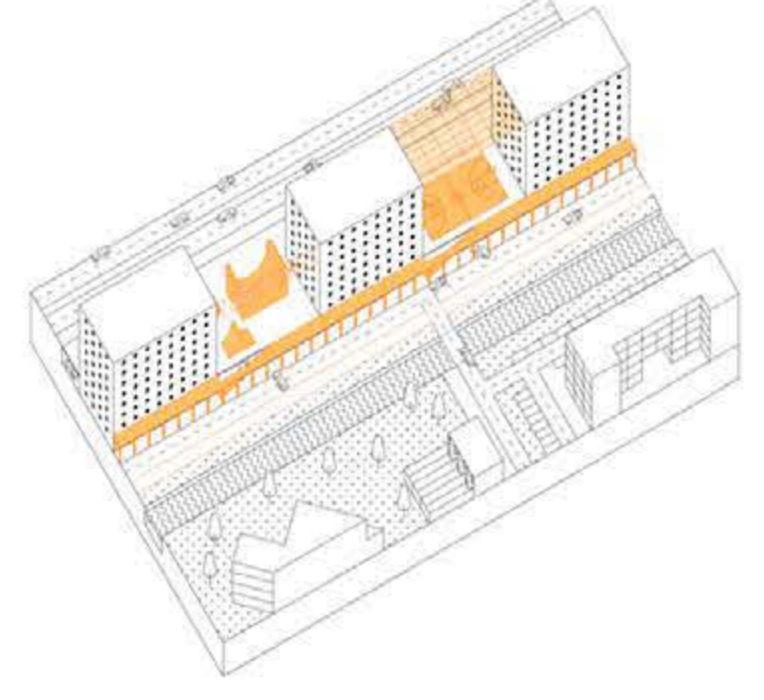
- To provide a social space connected with "Bergwijkpark" and the business district in front of "Diemen Zuid" metro station

TOOLS

- Textile cover between the two train viaducts
- Implemented parking platform

GOALS

- To colonize the ground level using the overlaying infrastructure
- To give back surface to the public use with recreational facilities



TOOLS

- Architectural plug-in for the parking level
- Textile cover between buildings
- Recreational facilities

GOALS

- To link the two different levels and allow the colonization of the empty spaces
- To use the morphological pre-existing conditions giving an implemented public space
- To create a recreational public space for the housing buildings of "Anna Blamsingel" street

TOOLS

- Designed playground on street level parking
- New multifunctional structure with parking, housing and productive structures

GOALS

- To expand and to upgrade the open-air space of the school system ("De Bijmerhorst", "As-Soefah" and "Polstok")

TOOLS

- Demolition of a part of the multi-storey car park
- Architectural plug-in for the parking building
- Designed paving

GOALS

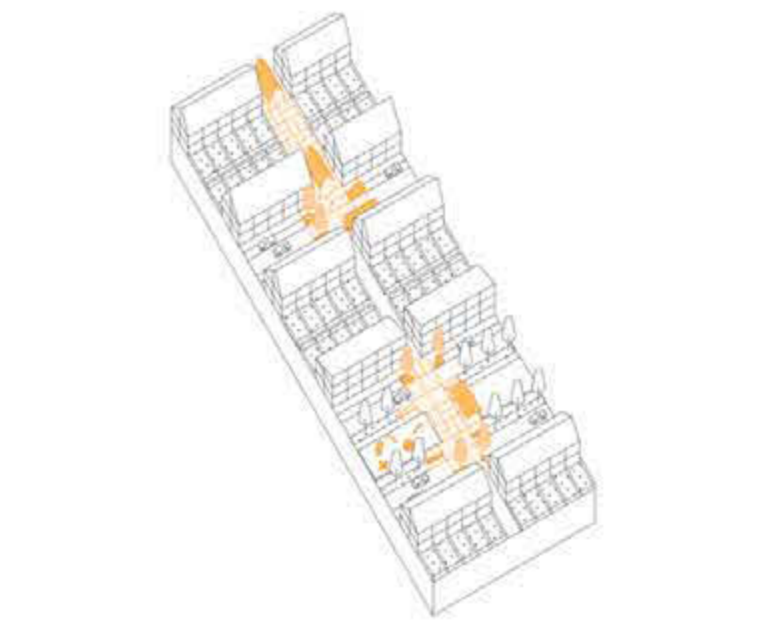
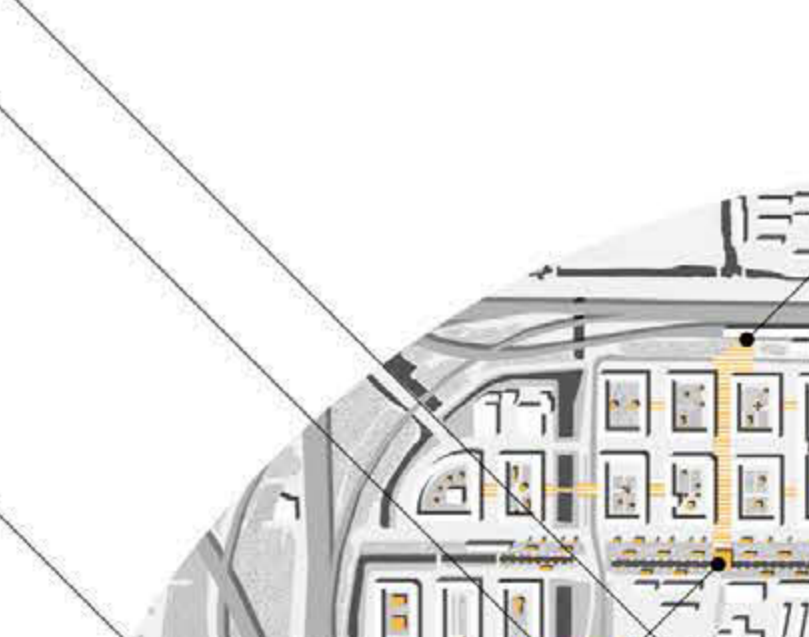
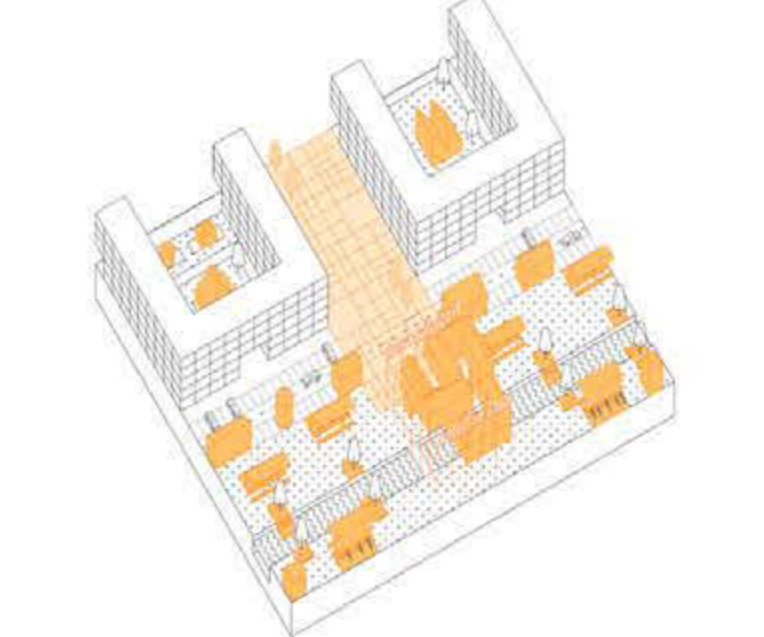
- To provide a larger social space with amenities near the "Taibah Jama Masjid" mosque

TOOLS

- Coverage
- Designed integrated paving
- Facilities

GOALS

- To revitalize an urban empty space connecting the market near the "Kraaiennest" metro station to the green area



TOOLS

- Designed linear paving
- Productive structures and urban furniture
- Landmark productive structure

GOALS

- To link the waterfront of the canal with the activated courtyards
- To make more visible and attractive from far away the "Productive Canal"
- To make more comfortable the experience in the landscape

TOOLS

- Demolition of one level of linear multi-storey car park
- Pedestrian surface that contains amenities, productive facilities, urban furniture and integrated parkings

GOALS

- To allow the pedestrian connection along the dreef and to activate new productive area

TOOLS

- Productive structures inserted in the empty spaces between houses
- Designed paving

GOALS

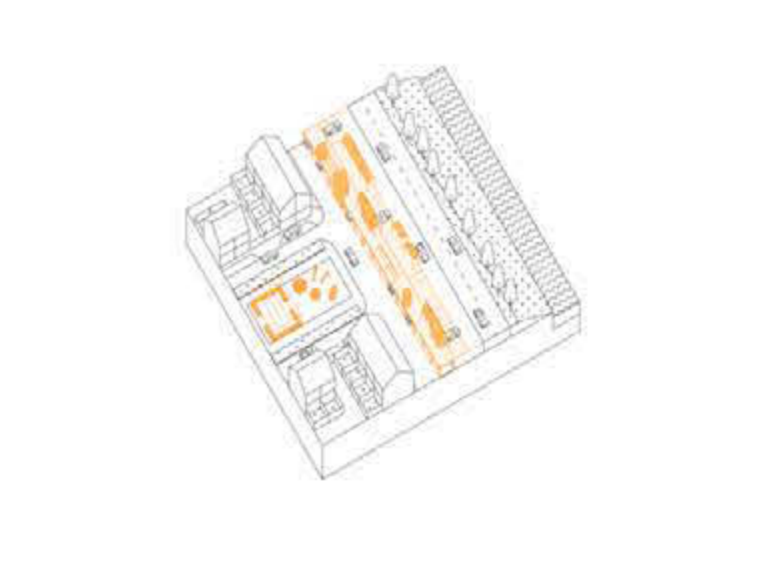
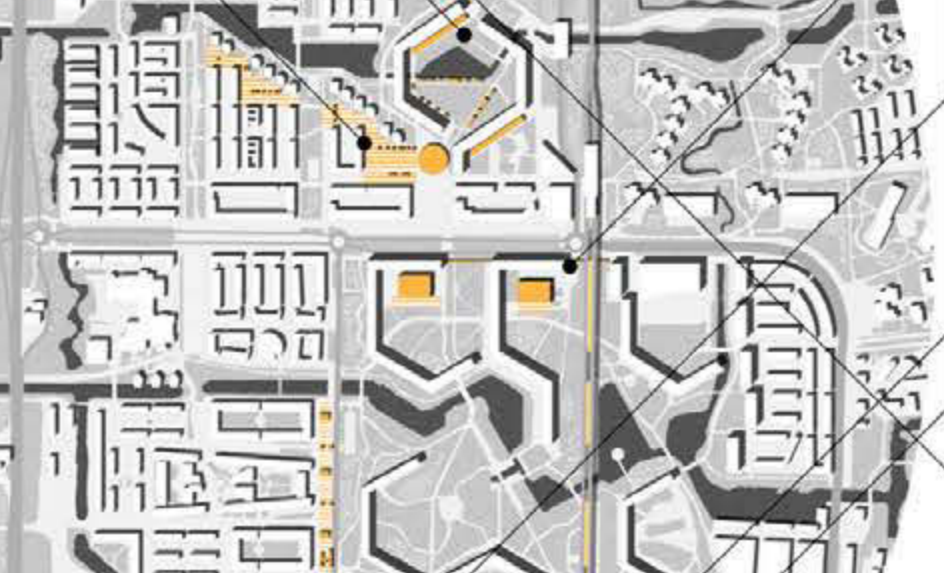
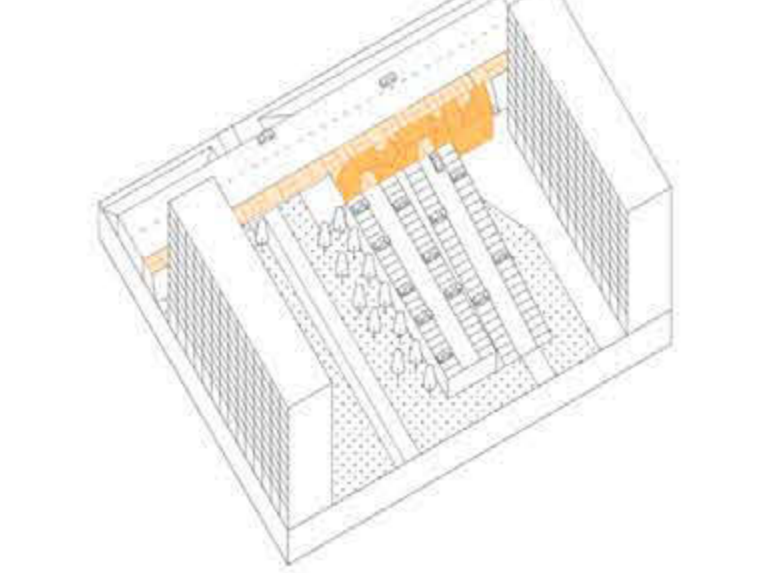
- To create neighborhood relationships through the dwellers of terraced houses along "Ethosa" street
- To underline the productive places

TOOLS

- Linear structure with a new covered parking at the ground level and a multifunctional promenade at the dreef level

GOALS

- To allow the stop in the area for the dreef users
- To connect the dreef level to the new implemented public space



TOOLS

- Pedestrian surface
- Gate device with services above

GOALS

- To allow the stop in the new implemented public space and to connect the pedestrian path with the courtyard

TOOLS

- Productive structures
- Recreational facilities

GOALS

- To activate mono-functional (parking garages) courtyards

TOOLS

- Linear structure with a new covered parking at the ground level and a multifunctional promenade at the dreef level

GOALS

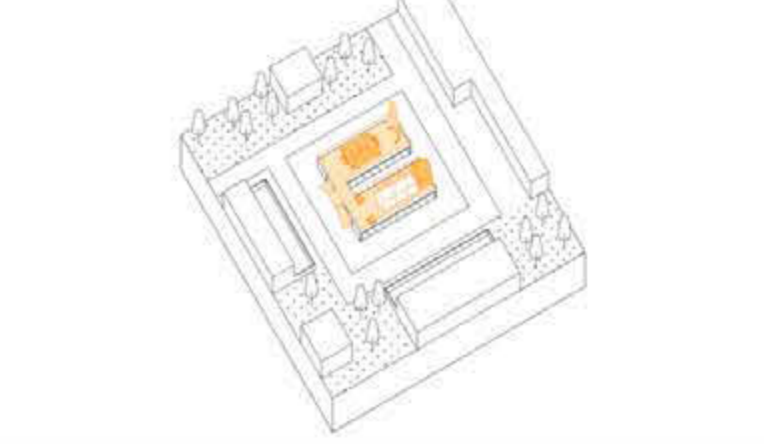
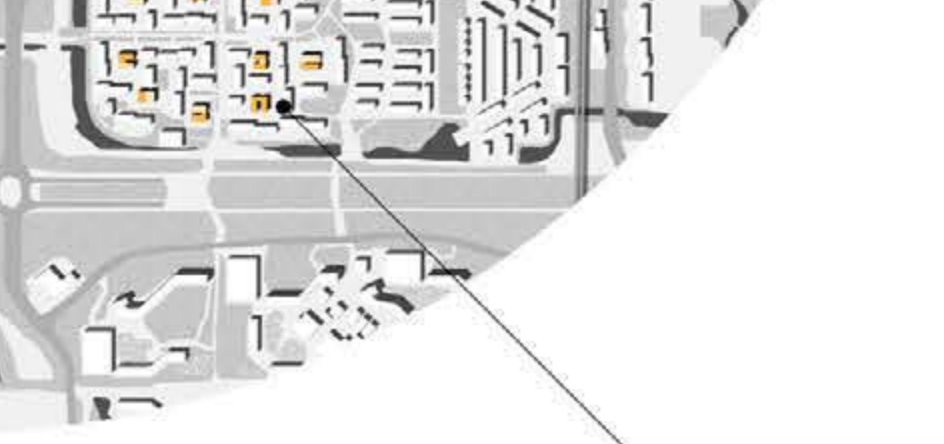
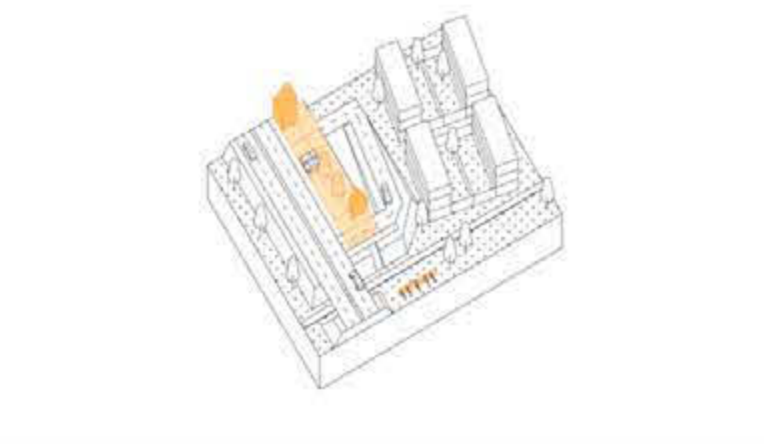
- To allow the stop in the area for the dreef users
- To connect the dreef level to the new implemented public space

TOOLS

- Productive structures
- Recreational facilities

GOALS

- To activate mono-functional (parking garages) courtyards



TOOLS

- Demolition of one level of linear multi-storey car park
- Pedestrian surface that contains amenities, productive facilities, urban furniture and integrated parkings

GOALS

- To allow the pedestrian connection along the dreef and to activate new productive area

TOOLS

- Demolition of one level of linear multi-storey car park
- Pedestrian surface that contains amenities, productive facilities, urban furniture and integrated parkings

GOALS

- To allow the pedestrian connection along the dreef and to activate new productive area

TOOLS

- Demolition of one level of linear multi-storey car park
- Pedestrian surface that contains amenities, productive facilities, urban furniture and integrated parkings

GOALS

- To allow the pedestrian connection along the dreef and to activate new productive area

TOOLS

- Demolition of one level of linear multi-storey car park
- Pedestrian surface that contains amenities, productive facilities, urban furniture and integrated parkings

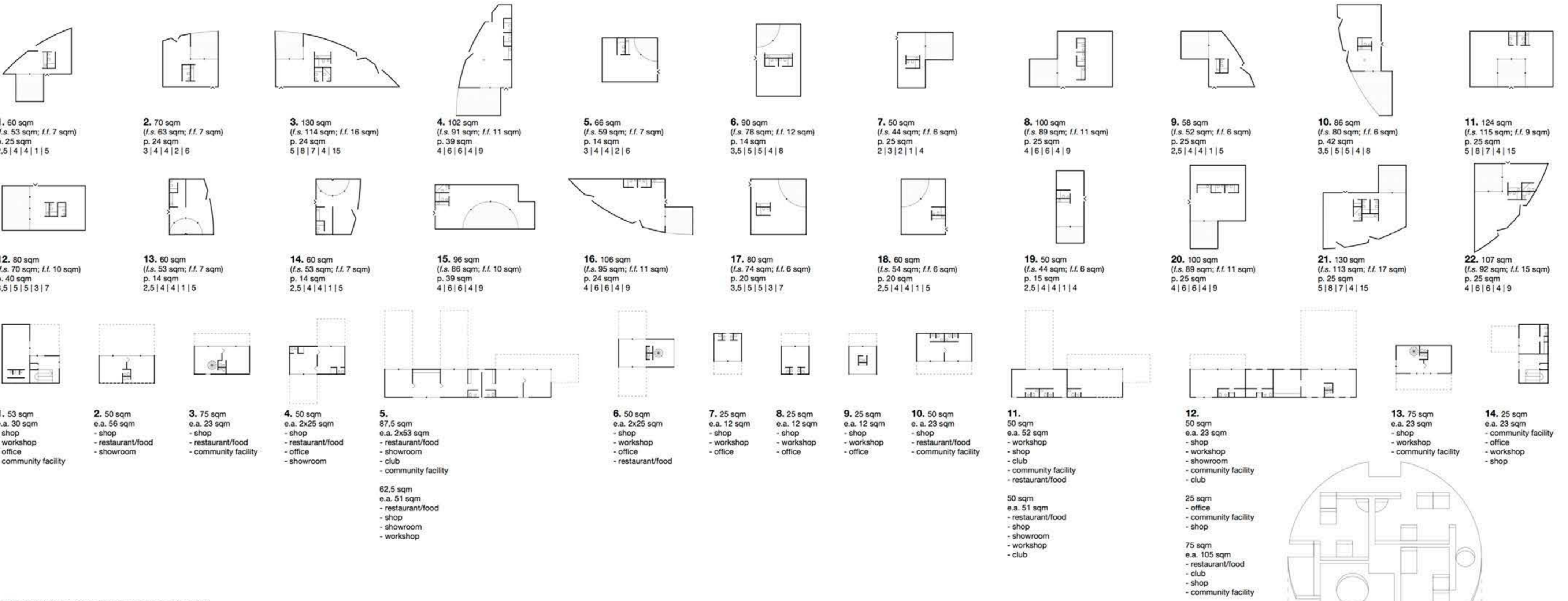
GOALS

- To allow the pedestrian connection along the dreef and to activate new productive area



H-BUURT

H-Buurt strategy can easily be expanded to the entire Bijlmermeer neighbourhood. Many areas ask for the design of new public spaces. Each one is different and they require a contextual approach that can be assumed by the architectural project as the starting point. Projects can be made through the composition of the same elements already displayed on the ground each time measured on context needs.



Dwellings and productive places plans scale 1:500
 legend: a.f.: adaptable space
 f.f.: fixed facilities
 p.: patio
 possible configurations: person | guest | student | smart worker | office worker
 e.a.: external area
 possible activities: - > - ...

Exploded axonometry

The dwellings are designed by the only positioning of the service facilities due to allow users to layout their own solution of internal separation according to their living or working needs.
 Productive volumes are structured on a modular dimension of 5x5 m. They are conceived with no function defined because they are able to host many kind of activities. They can be jointed or separated by mobile walls and each one of them can expand its space in the nearby public space.
 All the building have a pillars structure displayed on a 5x5m grid it is ordinary and cheap, it fits with parking and living spaces, it can be easily expanded and, in the end, it can be built with any kind of technology.

